

151

87th Street

Daly City, CA 94015

TCN
WORLDWIDE
REAL ESTATE SERVICES



For Lease

Office Space

Ted Lee
ted@starboardcre.com
415.236.5942



STARBOARD CRE
LOCAL • INDEPENDENT • ENTREPRENEURIAL

BUILDING SUMMARY

Address:	151 87th Street
Tenancy Type:	Single Tenant
Listing Type:	Lease
Space Type:	Office
Lease Type:	Industrial Gross

Office Suites Available | Units 8, 12 & 18



Second Floor Suites

Located on second floor



Flexible Suite Sizes

Ranging from 200 600 SF



Private Office Options

Suites include private offices



Partitioned Workspace Layout

Includes partition walls throughout



Street Rooftop Views

Views of street rooftop



Private Sink Feature

One unit includes sink



Dedicated Parking Space

Each unit includes parking



Shared Restroom Access

Restroom access on floor



Ideal Professional Use

Suitable for small businesses

BUILDING SUMMARY

Three second-floor suites ranging from 200–600 SF — ideal for solo practitioners, small teams, or studio use

Unit 8 : Private offices with partition walls, street or rooftop views.

Unit 12 : Compact studio/storage room, ideal for a single occupant or dedicated workspace.

Unit 18 : Private offices with partition walls, street or rooftop views, plus installed private sink.

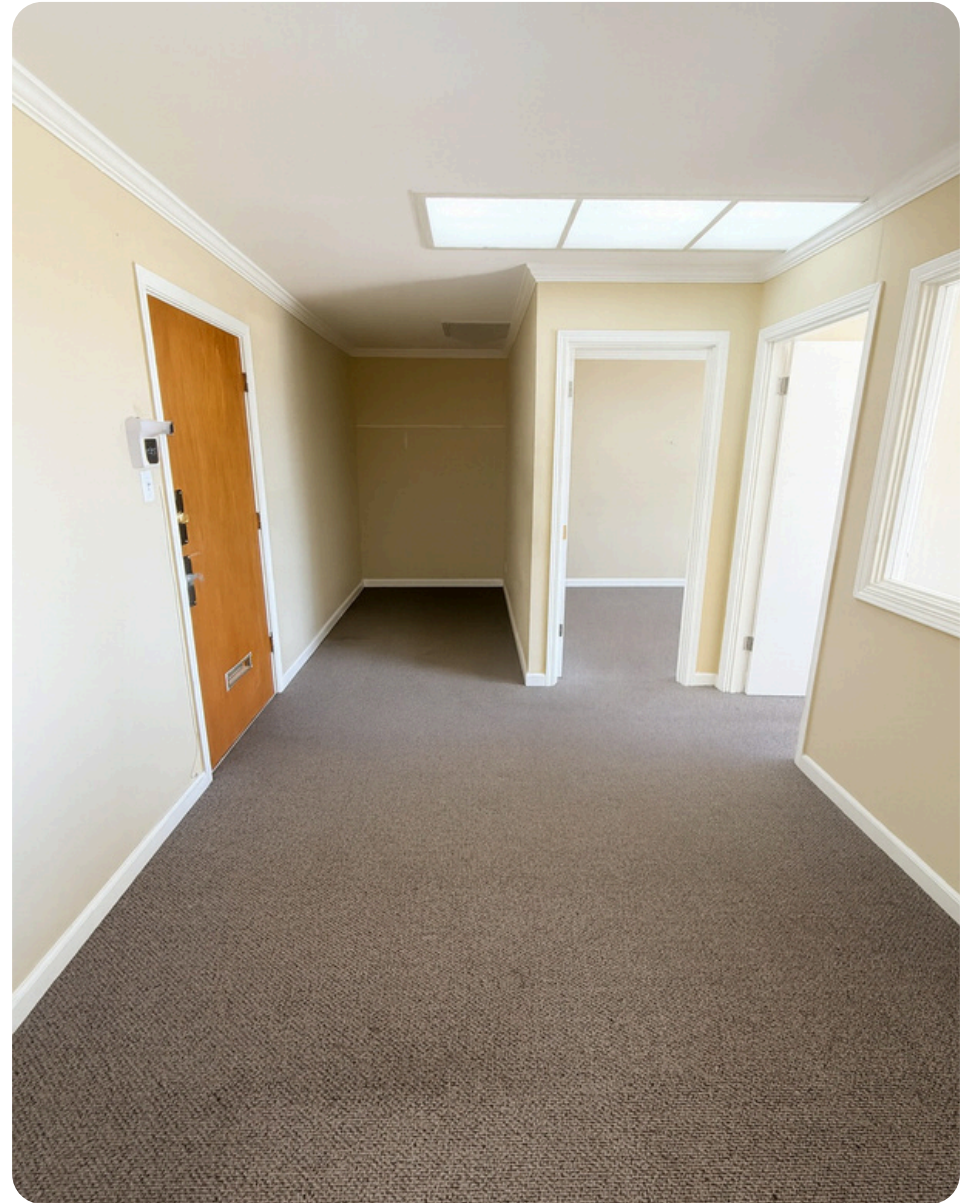
All units include shared restroom access on the floor and dedicated on-site parking space



Images



Images



AGENTS



Ted Lee

Leasing and Sales Associate

ted@starboardcre.com

CELL: 415.236.5942

CA DRE # 02165732

Call

View Profile



STARBOARD CRE
LOCAL • INDEPENDENT • ENTREPRENEURIAL



STARBOARD CRE
LOCAL • INDEPENDENT • ENTREPRENEURIAL

STARBOARDCRE.COM
OFC. PHONE 415.765.6900
49 POWELL STREET, SAN FRANCISCO, CA 94102



Unique Vision

We see what others miss

Local Market Leader

No one knows Northern
California like we do

Full-Service Firm

We do it all

Locally based, and technology-forward, our brokers are highly qualified experts backed by a full-service, in-house support team who understand the intricacies of San Francisco real estate. Starboard CRE brings decades of brokerage experience representing over 600 million square feet of space with an aggregate lease value of over 10 billion and investments sold over 3 billion.

CA DRE# 01103056

