

# 560

## 4th Street

San Francisco CA 94107

TCN  
WORLDWIDE  
REAL ESTATE SERVICES

# For Lease

Mark Meier

mark@starboardcre.com

415.299.7042

Craig Hansson

craig@starboardcre.com

415.710.7768



STARBOARD CRE  
LOCAL • INDEPENDENT • ENTREPRENEURIAL



# BUILDING SUMMARY

Address:	560 4 <sup>th</sup> Street
Property Type:	Creative Office
Size:	±5,000 SQFT
Term:	3 to 5 years
Rate:	Ask Agent



## Full Building Opportunity

Entire building available



## Warehouse-Style Access

Roll-up drive-in door



## Heavy Power Capacity

400 amps available



## High-Volume Interior

20' ceilings with skylights



## Built-In Climate Control

Full HVAC throughout



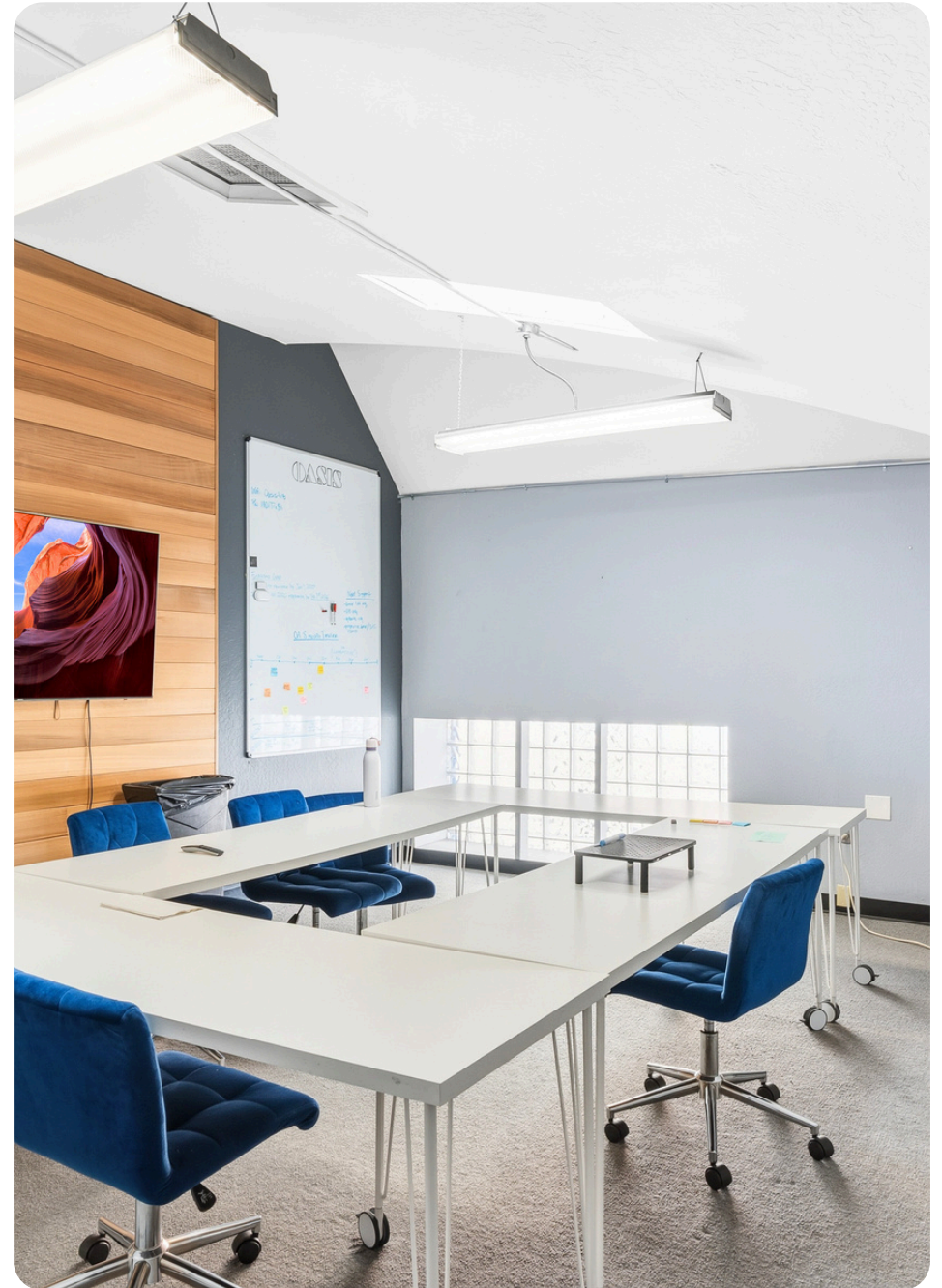
## Private Office Layout

Offices and meeting rooms



## Prime SoMa Location

Near South Park & Caltrain





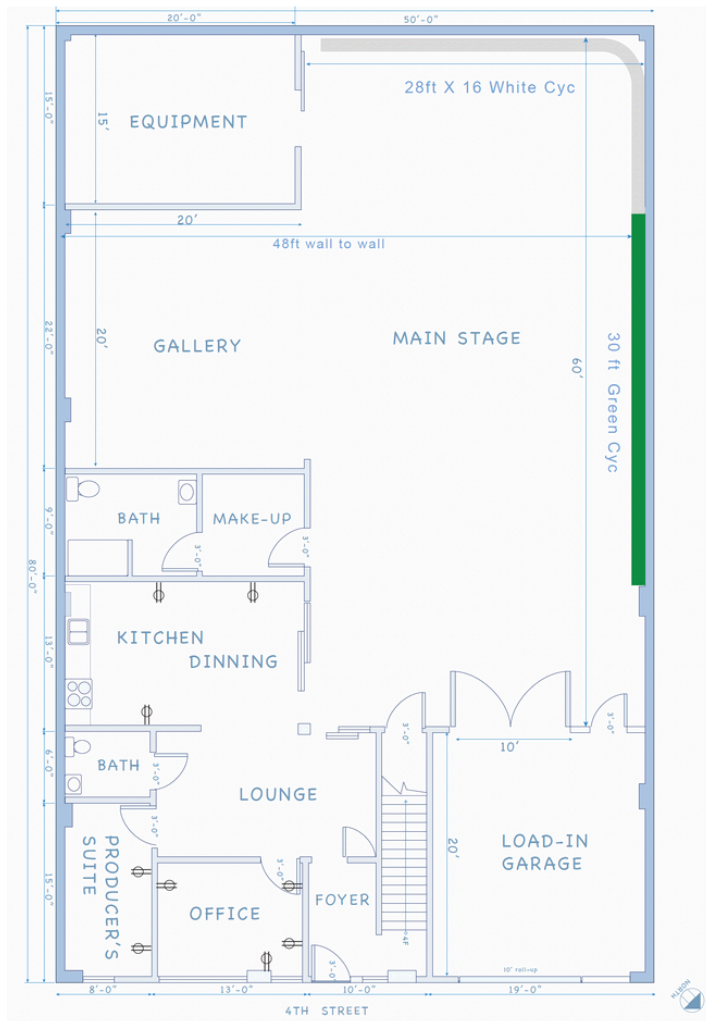




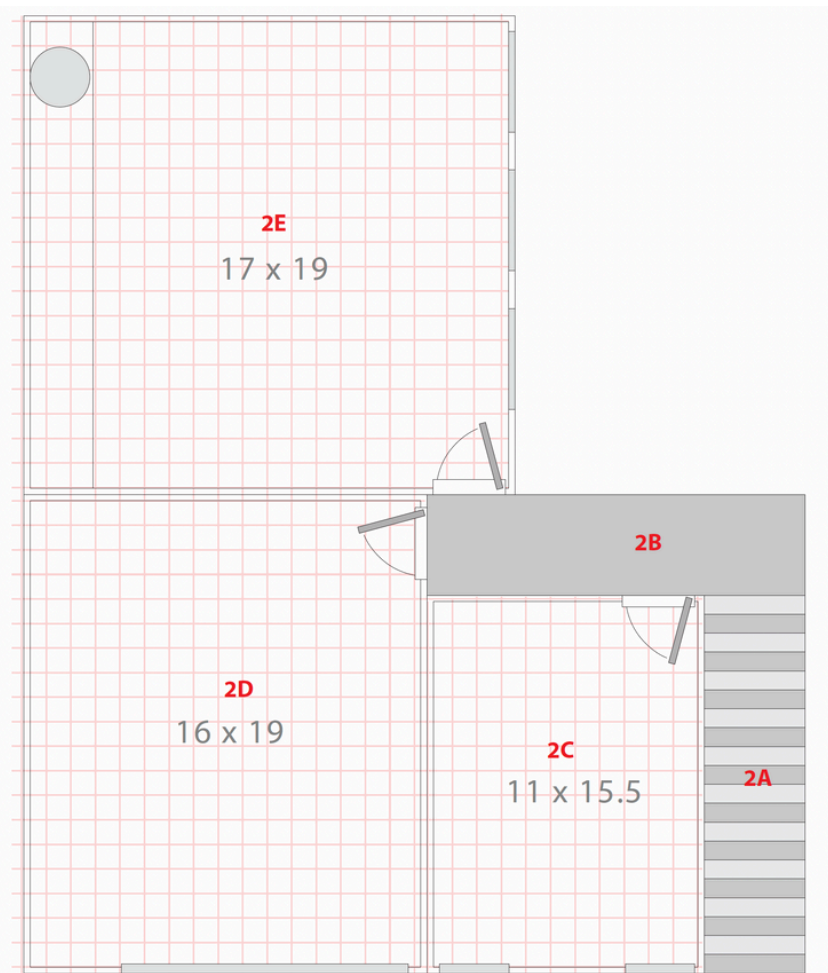


# Floor Plans

## Ground Floor



## 2nd Floor



# Agent

---



## Mark Meier

Lease and Sales Senior Associate

mark@starboardcre.com

CELL: 415.299.7042

CA DRE # 02047169

Call

View Profile



## Craig Hansson

Vice President

craig@starboardcre.com

CELL: 415.710.7768

CA DRE # 01841643

Call

View Profile



STARBOARD CRE  
LOCAL • INDEPENDENT • ENTREPRENEURIAL





**STARBOARD CRE**  
LOCAL • INDEPENDENT • ENTREPRENEURIAL

STARBOARDCRE.COM  
OFC. PHONE 415.765.6900  
49 POWELL STREET, SAN FRANCISCO, CA 94102



## Unique Vision

We see what others miss

## Local Market Leader

No one knows Northern  
California like we do

## Full-Service Firm

We do it all

Locally based, and technology-forward, our brokers are highly qualified experts backed by a full-service, in-house support team who understand the intricacies of San Francisco real estate. Starboard CRE brings decades of brokerage experience representing over 600 million square feet of space with an aggregate lease value of over 10 billion and investments sold over 3 billion.

**CA DRE# 01103056**

**TCN**  
WORLDWIDE  
REAL ESTATE SERVICES

**AREA**  
ASSOCIATED REALTY OF THE AMERICAS