

560

4th Street

San Francisco CA 94107

TCN
WORLDWIDE
REAL ESTATE SERVICES

For Lease

Mark Meier

mark@starboardcre.com

415.299.7042

Craig Hansson

craig@starboardcre.com

415.710.7768



STARBOARD CRE
LOCAL • INDEPENDENT • ENTREPRENEURIAL

BUILDING SUMMARY

Address:	560 4 th Street
Property Type:	Creative Office
Size:	±5,000 SQFT
Term:	Negotiable
Rate:	Ask Agent



Full Building Opportunity

Entire building available



Warehouse-Style Access

Roll-up drive-in door



Heavy Power Capacity

400 amps available



High-Volume Interior

20' ceilings with skylights



Built-In Climate Control

Full HVAC throughout



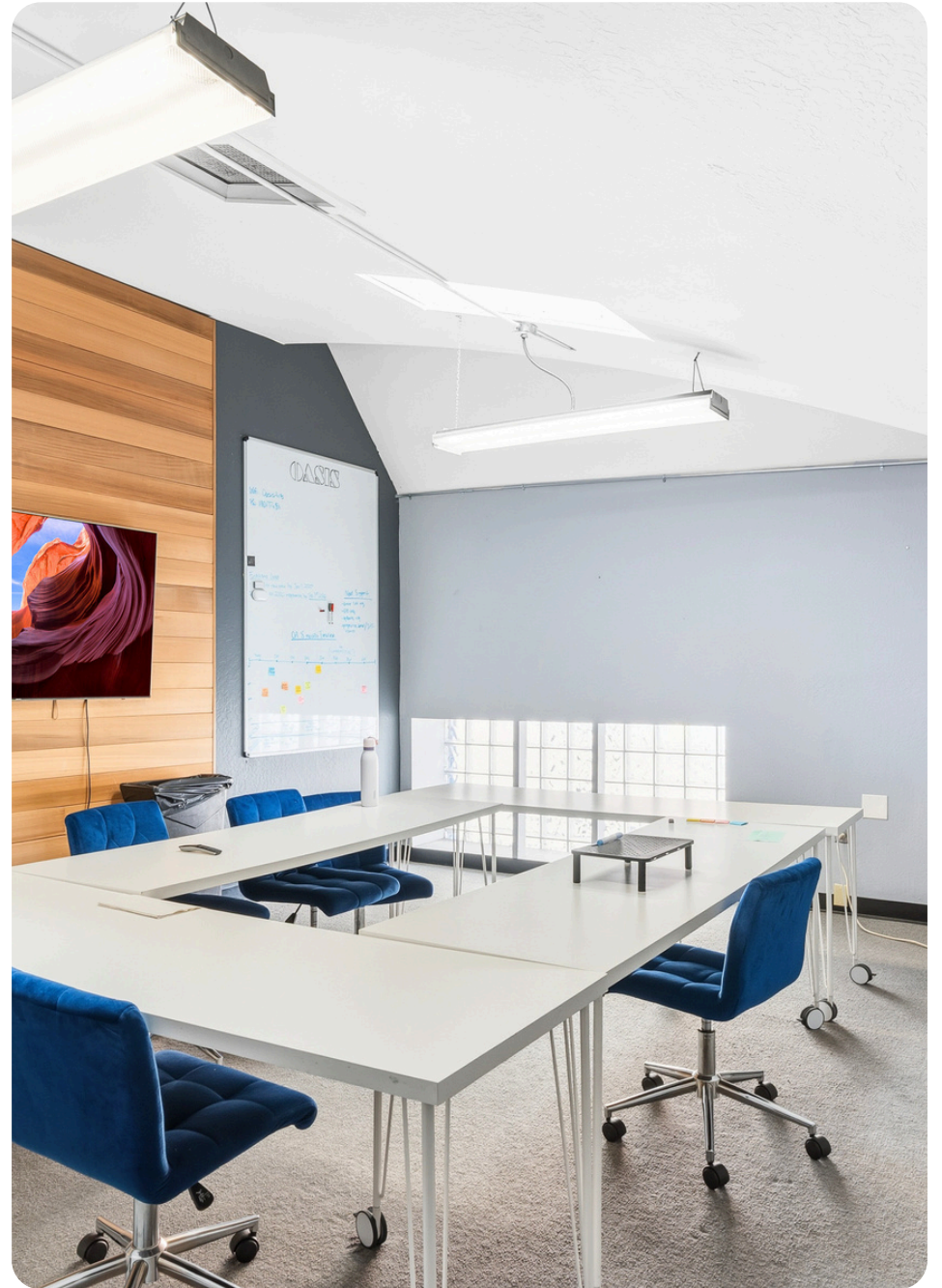
Private Office Layout

Offices and meeting rooms



Prime SoMa Location

Near South Park & Caltrain

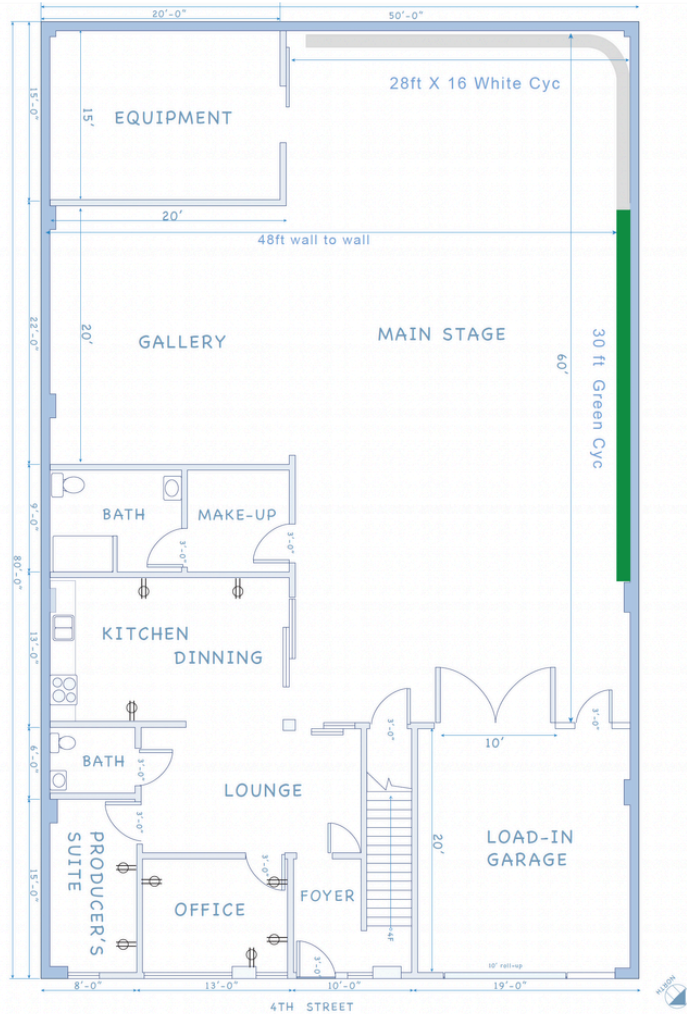




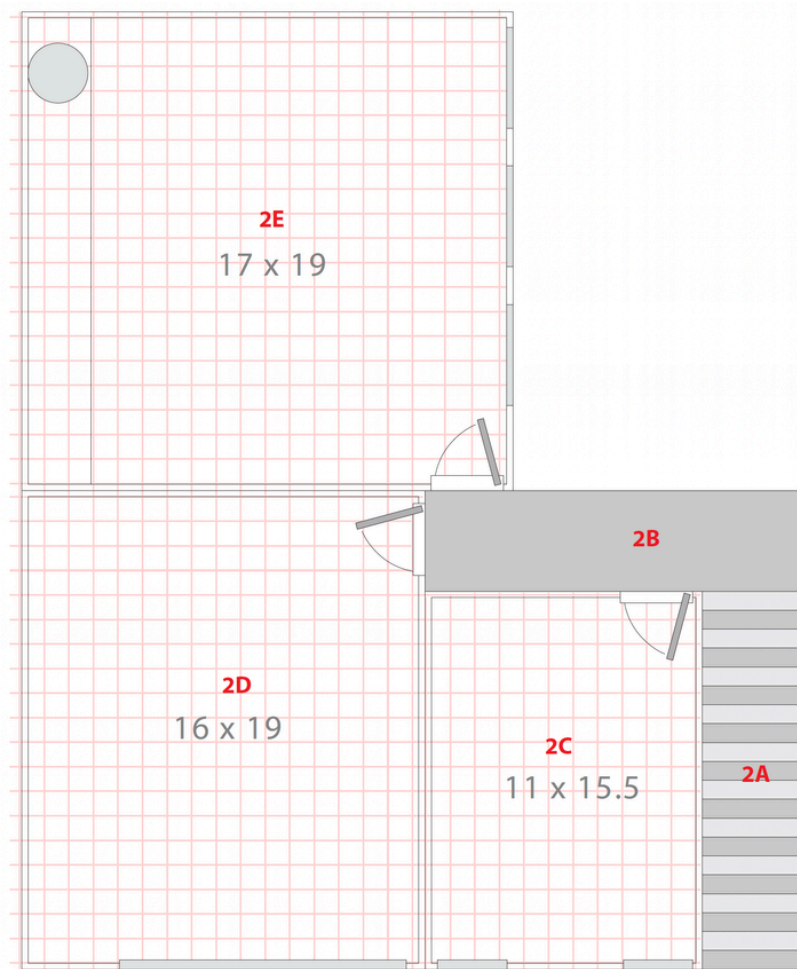


Floor Plans

Ground Floor



2nd Floor



Agent



Mark Meier

Lease and Sales Senior Associate
mark@starboardcre.com
CELL: 415.299.7042
CA DRE # 02047169

Call

View Profile



Craig Hansson

Vice President
craig@starboardcre.com
CELL: 415.710.7768
CA DRE # 01841643

Call

View Profile





STARBOARD CRE
LOCAL • INDEPENDENT • ENTREPRENEURIAL

STARBOARDCRE.COM
OFC. PHONE 415.765.6900
49 POWELL STREET, SAN FRANCISCO, CA 94102



Unique Vision

We see what others miss

Local Market Leader

No one knows Northern
California like we do

Full-Service Firm

We do it all

Locally based, and technology-forward, our brokers are highly qualified experts backed by a full-service, in-house support team who understand the intricacies of San Francisco real estate. Starboard CRE brings decades of brokerage experience representing over 600 million square feet of space with an aggregate lease value of over 10 billion and investments sold over 3 billion.

CA DRE# 01103056

