

1362

Post Street

San Francisco, CA 94109

TCN
WORLDWIDE
REAL ESTATE SERVICES

FOR LEASE

Office Space

Ted Lee
ted@starboardcre.com
415.236.5942

Kyle Pasiecznik
kyle@starboardcre.com
650.678.4669

Colton Africano
colton@starboardcre.com
415.801.0705



STARBOARD CRE
LOCAL • INDEPENDENT • ENTREPRENEURIAL

BUILDING SUMMARY

Address:	1362 Post Street
Available Space:	±8,000 SF
Term:	Negotiable
Floors:	Three floors + basement
Listing Type:	Lease



Shared Waiting Area on Entry Floor
Ideal for reception or lounge use.



Occupied by Korean Center Inc.
Active community use on lower floors.



Multi-Level Building
Three floors plus basement.



±8,000 SF Total
Spacious interior layout.



Flexible Floor Plan
Classrooms or office use.



Basement Kitchen
Shared kitchenette access.



Rear Patio Space
Private outdoor area.



Wheelchair Access
Accessible basement entry.



Negotiable Lease Terms
Flexible leasing options.

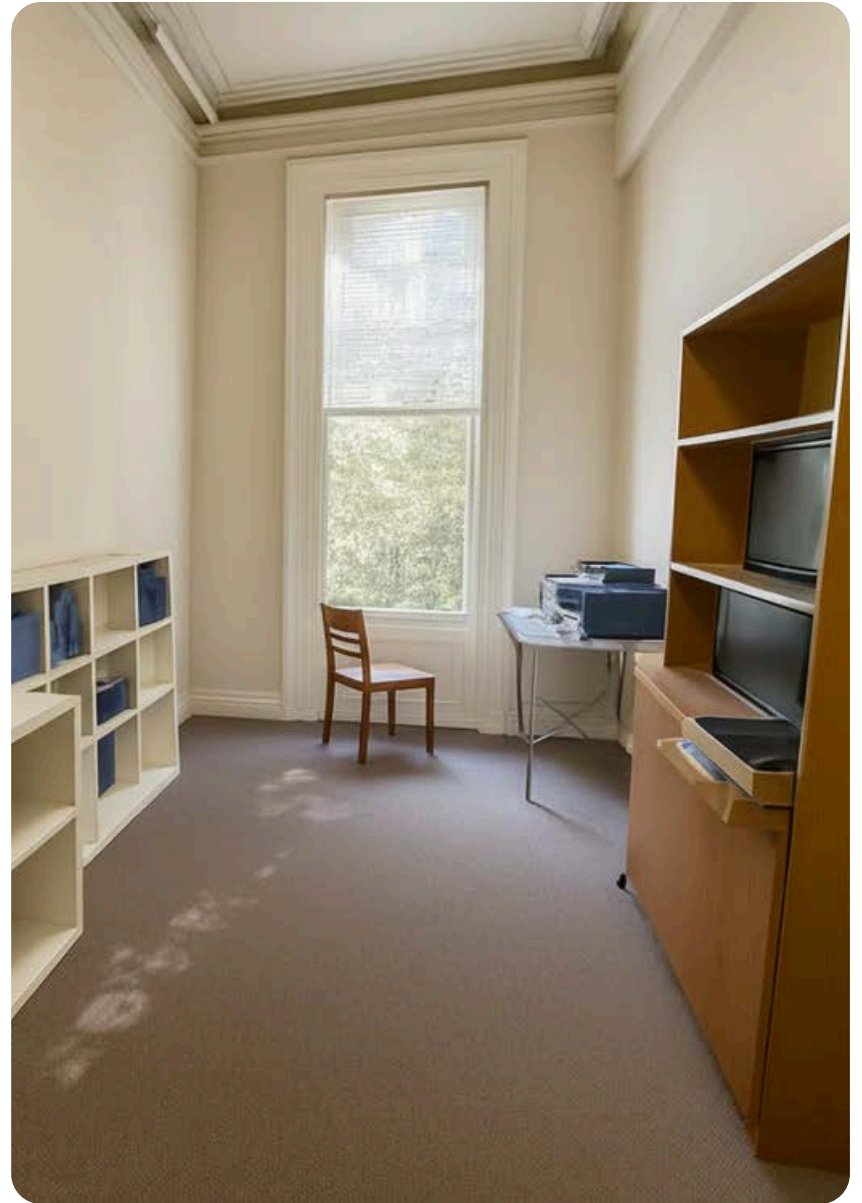


Classroom and Office Mix
Ideal for education or work.

IMAGES



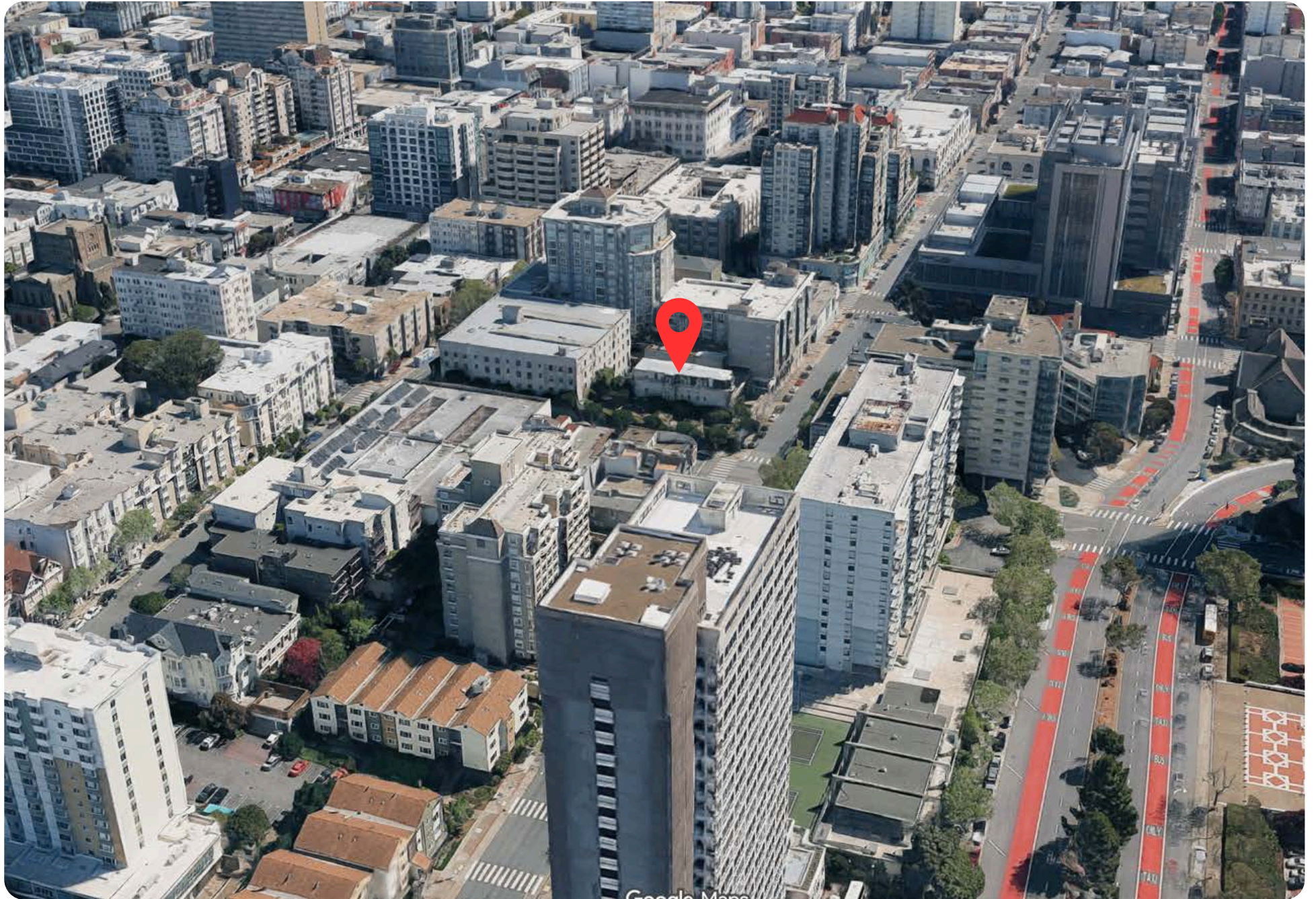
IMAGES



IMAGES



AERIAL



AGENT



Ted Lee

Leasing and Sales Associate
ted@starboardcre.com
CELL: 415.236.5942
CA DRE # 02165732

[Call](#)[View Profile](#)

Kyle Pasiecznik

Leasing & Sales Associate
kyle@starboardcre.com
CELL: 650.678.4669
CA DRE # 02074330

[Call](#)[View Profile](#)

Colton Africano

Leasing & Sales Agent
colton@starboardcre.com
CELL: 415.801.0705
CA DRE # 02140019

[Call](#)[View Profile](#)

STARBOARD CRE
LOCAL • INDEPENDENT • ENTREPRENEURIAL



STARBOARD CRE
LOCAL • INDEPENDENT • ENTREPRENEURIAL

STARBOARDCRE.COM
OFC. PHONE 415.765.6900
49 POWELL STREET, SAN FRANCISCO, CA 94102



Unique Vision

We see what others miss

Local Market Leader

No one knows Northern
California like we do

Full-Service Firm

We do it all

Locally based, and technology-forward, our brokers are highly qualified experts backed by a full-service, in-house support team who understand the intricacies of San Francisco real estate. Starboard CRE brings decades of brokerage experience representing over 600 million square feet of space with an aggregate lease value of over 10 billion and investments sold over 3 billion.

CA DRE# 01103056

TCN
WORLDWIDE
REAL ESTATE SERVICES

AREA
ASSOCIATED REALTY OF THE AMERICAS