

747

CLEMENTINA STREET

San Francisco, CA 94103

TCN
WORLDWIDE
REAL ESTATE SERVICES

For Sale

\$1.3M

Craig Hansson
craig@starboardcre.com
415.710.7768

Mark Meier
mark@starboardcre.com
415.299.7042



STARBOARD CRE
LOCAL • INDEPENDENT • ENTREPRENEURIAL

BUILDING SUMMARY

Address: 747 Clementina Street

Square Ft: ± 2,500 SF

Asking Price: \$ 1,300,000

Property Type: Office / Flex / Industrial

Listing Type: Sale

Zoning Flexibility:

Permitted use by right allows for potential conversion.

Live-Work Opportunity:

Ideal for a flexible live-work setup.



High Timber Ceilings

Beautiful, high sandblasted timber ceilings add height and character.



Upgraded Electrical Power

200 AMP 3-phase power for strong and flexible distribution



Modern Entry Doors

Glass roll-up section door and roll-down metal door



Quiet Prime Location

Located on the best and quietest street in West SOMA



Bright Natural Light

Large skylights and open layout for excellent illumination



Air Conditioning

Full zoned AC for comfortable climate control.



Security

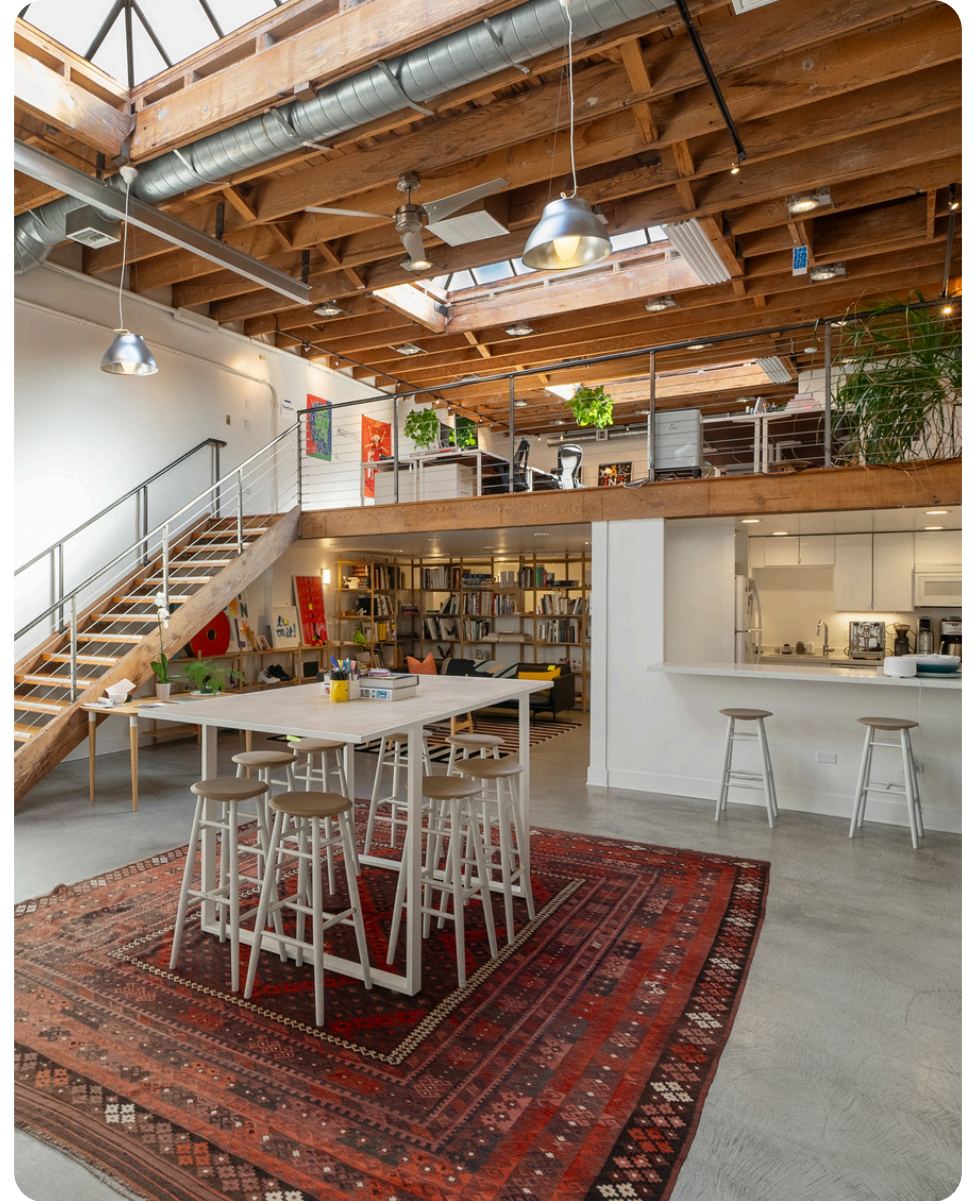
A full security system is installed for peace of mind.



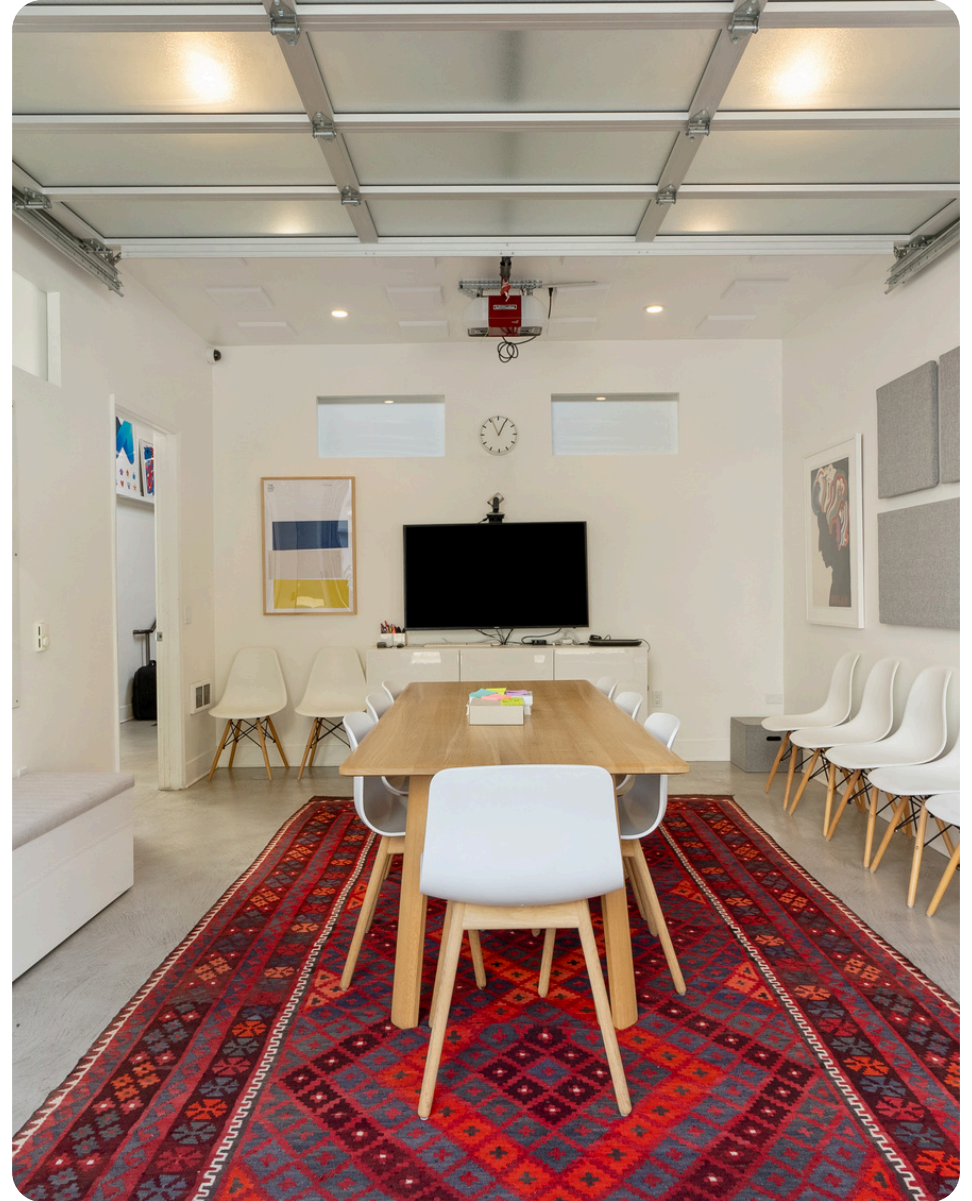
Transit Accessibility

Close proximity to BART public transit options

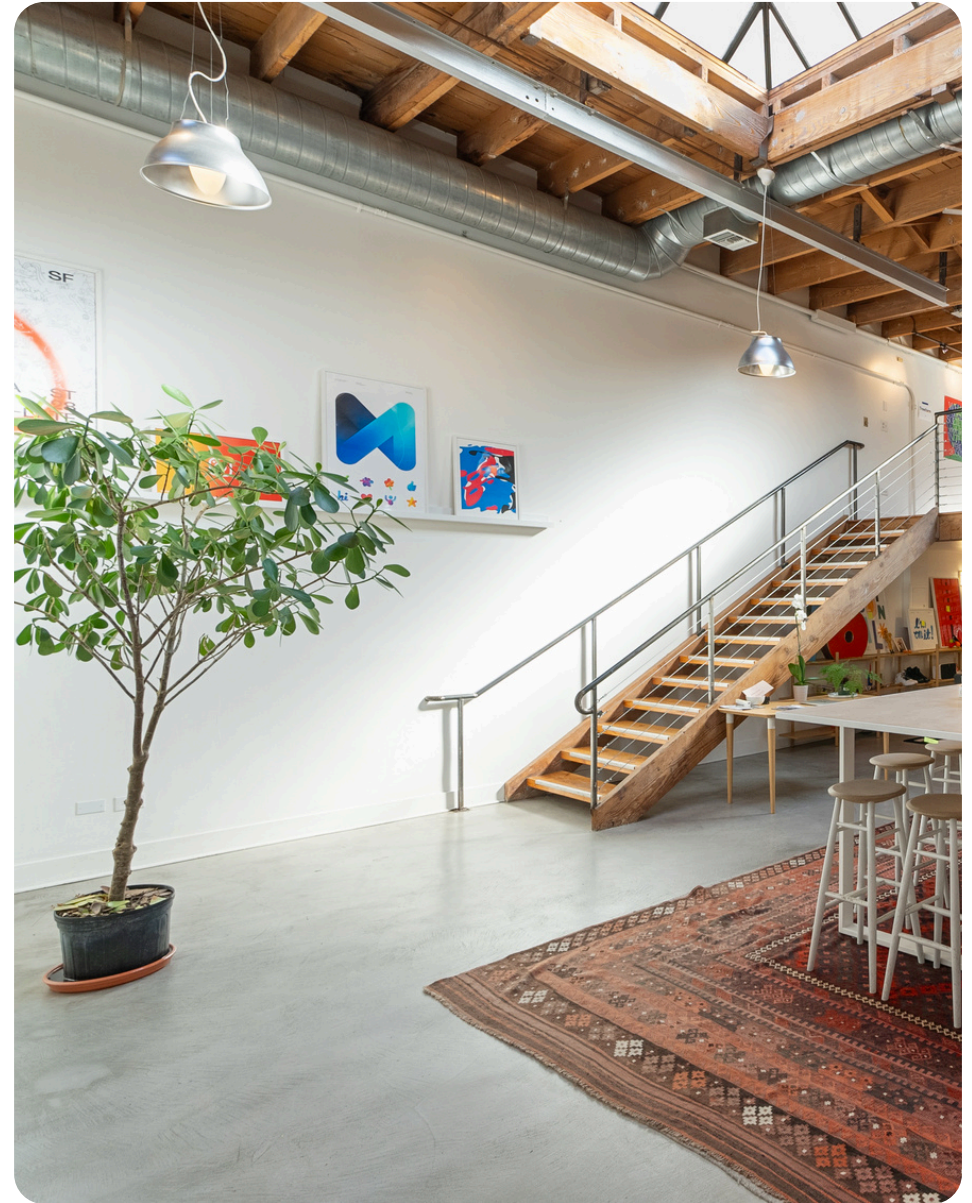
IMAGES



IMAGES



IMAGES



AERIAL VIEW

1.2 miles from Downtown San Francisco



STARBOARD CRE
LOCAL • INDEPENDENT • ENTREPRENEURIAL

AGENTS



CRAIG HANSSON

Vice President

craig@starboardcre.com

415-710-7768

CA BRE# 01841643

Call

View Profile



MARK MEIER

Lease and Sales Senior Associate

mark@starboardcre.com

415-299-7042

CA BRE# 02047169

Call

View Profile



STARBOARD CRE
LOCAL • INDEPENDENT • ENTREPRENEURIAL



STARBOARD CRE
LOCAL • INDEPENDENT • ENTREPRENEURIAL

STARBOARDCRE.COM
OFC. PHONE 415.765.6900
49 POWELL STREET, SAN FRANCISCO, CA 94102



Unique Vision

We see what others miss

Local Market Leader

No one knows Northern
California like we do

Full-Service Firm

We do it all

Locally based, and technology-forward, our brokers are highly qualified experts backed by a full-service, in-house support team who understand the intricacies of San Francisco real estate. Starboard CRE brings decades of brokerage experience representing over 600 million square feet of space with an aggregate lease value of over 10 billion and investments sold over 3 billion.

CA DRE# 01103056

TCN
WORLDWIDE
REAL ESTATE SERVICES

AREA
ASSOCIATED REALTY OF THE AMERICAS