

1841

Market Street

San Francisco CA 94103

TCN
WORLDWIDE
REAL ESTATE SERVICES

For Lease

CRAIG HANSSON
craig@starboardcre.com
415.710.7768

HANS HANSSON
hans@starboardcre.com
415.517.2589



STARBOARD CRE
LOCAL • INDEPENDENT • ENTREPRENEURIAL

Property Summary



Central Connectivity

Minutes from Central Freeway, Octavia Blvd., Lower Haight, and Hayes Valley.



Prime Development Zone

Surrounded by new residential projects like Venn on Market & Linea Condos.



Walkable Location

It is a short walk to Duboce Triangle and nearby neighborhoods.



Rapid Growth Area

There has been major growth over the past 5 years with new housing and businesses.



Close to SOMA

Just blocks from SOMA's vibrant business and residential community.



STARBOARD CRE
LOCAL • INDEPENDENT • ENTREPRENEURIAL

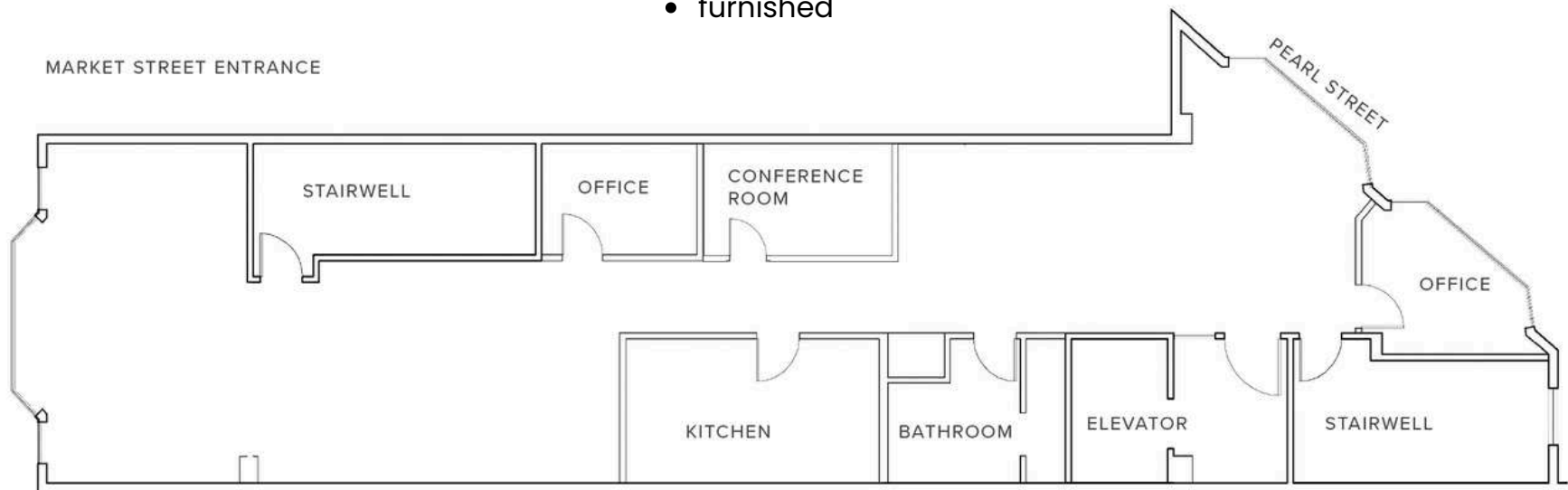
3RD FLOOR

Space Summary

- **Floor / Suite No.:** 3rd Floor
- **Square Ft.:** ± 2,401 SF
- **Rate:** \$42 IG
- **Available:** Available on October 1st

Highlights

- Full Floor Opportunity
- 1 private office with floor to ceiling windows
- looking onto Pearl Street
- 2 large open plan office space areas
- 1 Large kitchen/break room
- 1 storage room/potential office
- 1 ADA Uni-Sex Bathroom
- Market Street Window line w/ great natural light
- Garage parking available for rent in the building
- furnished



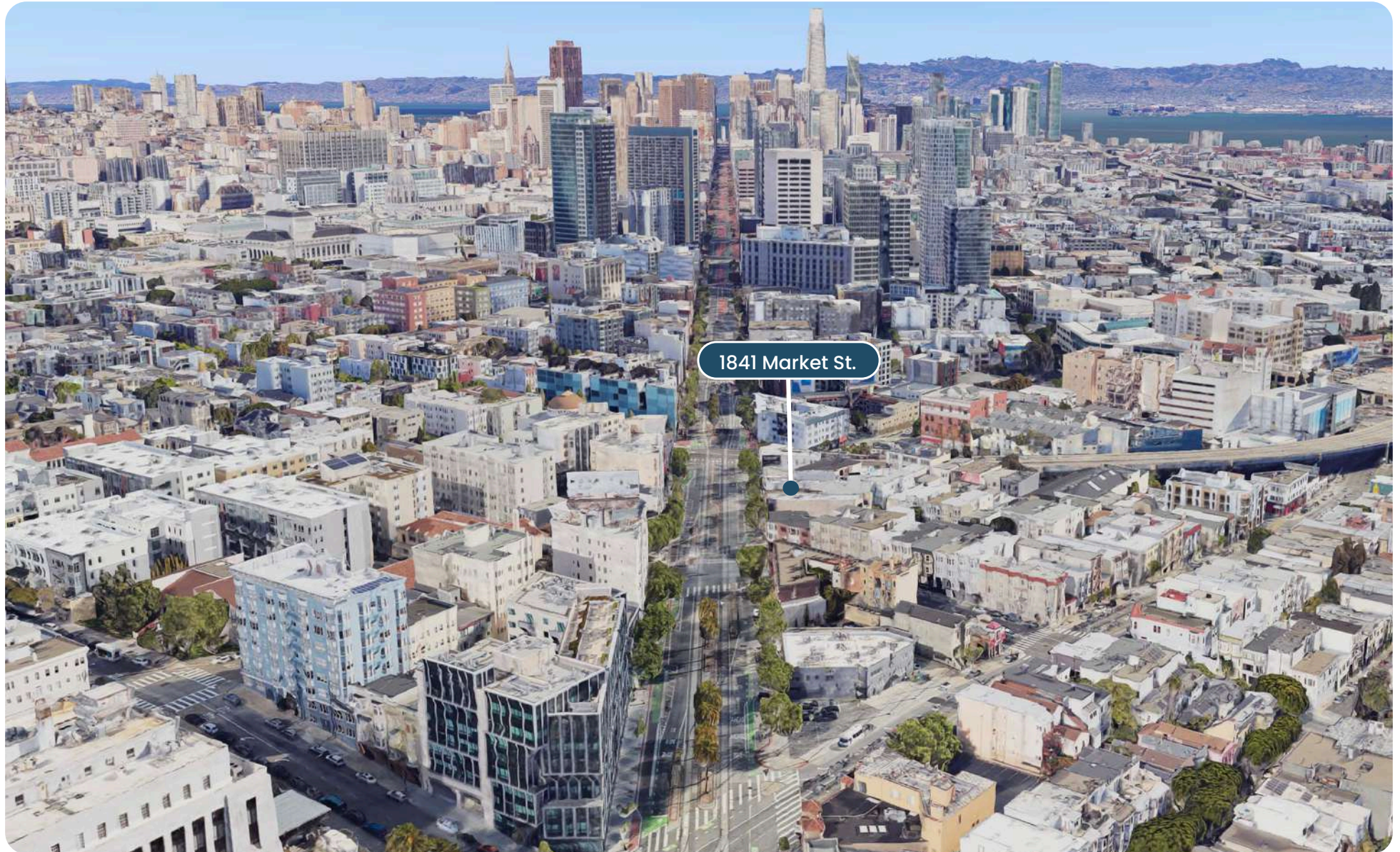
IMAGES | 3RD FLOOR



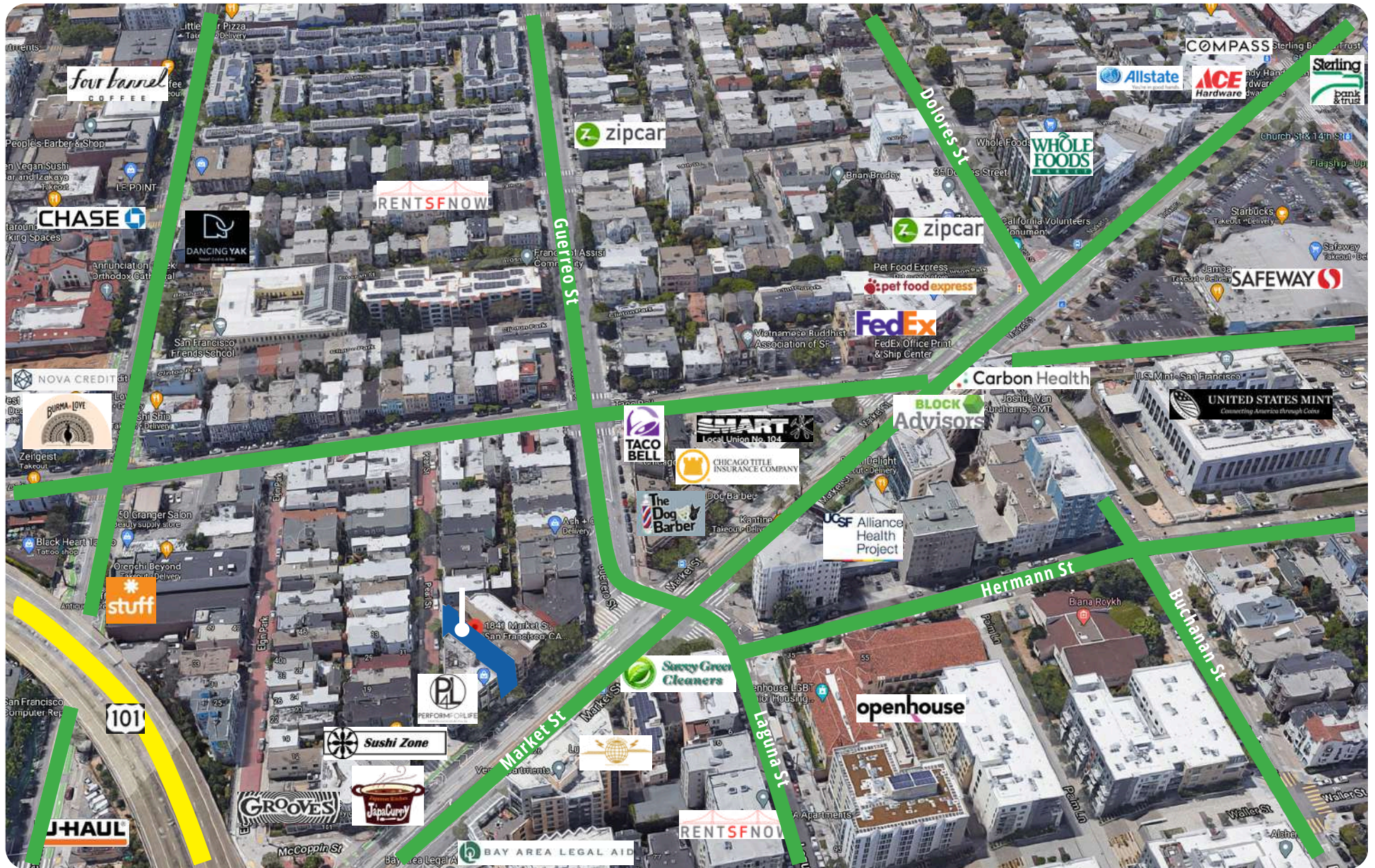
EXTERIOR



AERIAL



AERIAL



AGENTS



Craig Hansson

Vice President
craig@starboardcre.com
CELL: 415.710.7768
CA DRE #01841643

Call

View Profile



Hans Hansson

President / Broker of Record
hans@starboardcre.com
CELL: 415.517.2589
BRE # 00872902

Call

View Profile



STARBOARD CRE
LOCAL • INDEPENDENT • ENTREPRENEURIAL



STARBOARD CRE
LOCAL • INDEPENDENT • ENTREPRENEURIAL

STARBOARDCRE.COM
OFC. PHONE 415.765.6900
49 POWELL STREET, SAN FRANCISCO, CA 94102



Unique Vision

We see what others miss

Local Market Leader

No one knows Northern
California like we do

Full-Service Firm

We do it all

Locally based, and technology-forward, our brokers are highly qualified experts backed by a full-service, in-house support team who understand the intricacies of San Francisco real estate. Starboard CRE brings decades of brokerage experience representing over 600 million square feet of space with an aggregate lease value of over 10 billion and investments sold over 3 billion.

CA DRE# 01103056

TCN
WORLDWIDE
REAL ESTATE SERVICES

AREA
ASSOCIATED REALTY OF THE AMERICAS