

# 181

## South Park St.

San Francisco CA 94107

TCN  
WORLDWIDE  
REAL ESTATE SERVICES

# For Lease

## \$48 IG

**CRAIG HANSSON**

craig@starboardcre.com

415.710.7768

**HANS HANSSON**

hans@starboardcre.com

415-517-2589



**STARBOARD CRE**  
LOCAL • INDEPENDENT • ENTREPRENEURIAL



# BUILDING SUMMARY

**Address:** 181 South Park Street

**Property Type:** Office

**Term:** 2-5 Years

**Rate:** \$48 IG



## Prime Location

Spacious office on South Park with parking.



## Flexible Space

Up to 5,500 sqft, divisible for different layouts.



## Elegant Design

Features high ceilings and a spacious open area.



## Convenient Access

Ground and elevator access from a courtyard.



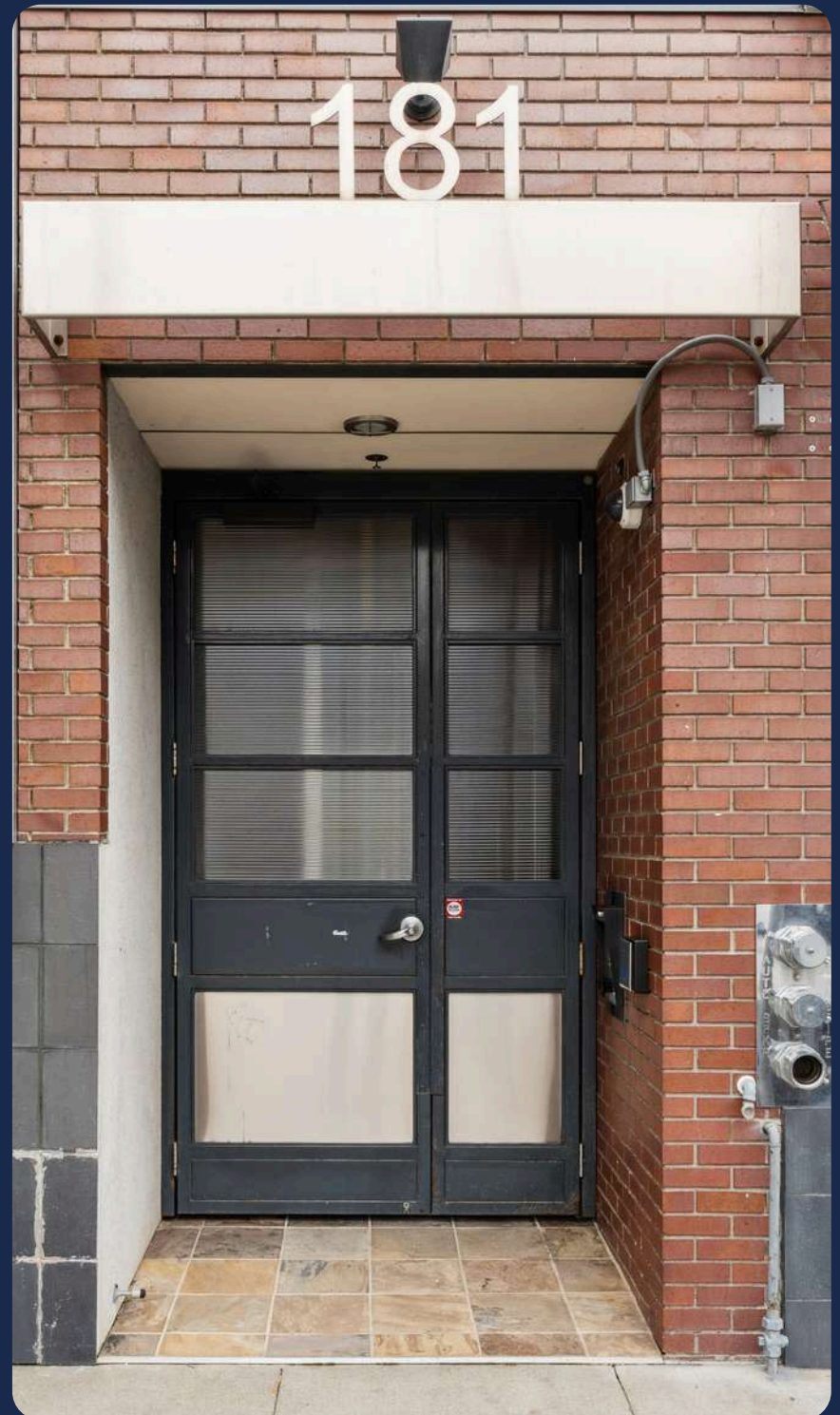
## Optimal Layout

Two opens, a conference room, private office.



## Natural Ambiance

Great natural light, doors open to courtyard.





# Ground Floor

<b>Size</b>	± 5,100 SF
<b>Rate</b>	\$48 IG
<b>Term</b>	Negotiable

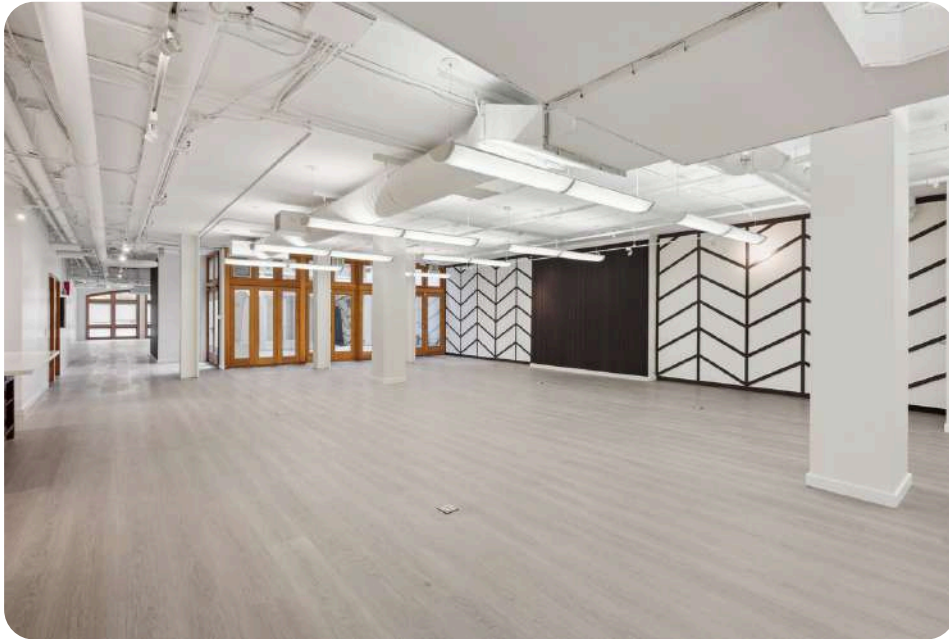
## Highlights

- Ground Floor Entry through the Courtyard
- Elevator Entry from Courtyard or Inside Space
- 2 Large Open Plan Areas
- 1 Large Conference Room
- 1 Large Private Office
- Great Natural Light
- All Doors Open into Courtyard





# Ground Floor | Images





# Floor Plan



FIRST FLOOR PLAN





# Team

---



## Craig Hansson

Vice President

[craig@starboardcre.com](mailto:craig@starboardcre.com)

CELL: 415.710.7768

CA DRE #01841643

Call

View Profile



## HANS HANSSON

President / Broker of Record

[hans@starboardcre.com](mailto:hans@starboardcre.com)

CELL: 415-517-2589

CA DRE # 00872902

Call

View Profile



STARBOARD CRE  
LOCAL • INDEPENDENT • ENTREPRENEURIAL





**STARBOARD CRE**  
LOCAL • INDEPENDENT • ENTREPRENEURIAL

STARBOARDCRE.COM  
OFC. PHONE 415.765.6900  
49 POWELL STREET, SAN FRANCISCO, CA 94102



### Unique Vision

We see what others miss

### Local Market Leader

No one knows Northern  
California like we do

### Full-Service Firm

We do it all

Locally based, and technology-forward, our brokers are highly qualified experts backed by a full-service, in-house support team who understand the intricacies of San Francisco real estate. Starboard CRE brings decades of brokerage experience representing over 600 million square feet of space with an aggregate lease value of over 10 billion and investments sold over 3 billion.

**CA DRE# 01103056**

**TCN**  
WORLDWIDE  
REAL ESTATE SERVICES

**AREA**  
ASSOCIATED REALTY OF THE AMERICAS