

# 759-761

## Clementina Street

San Francisco CA 94103

TCN  
WORLDWIDE  
REAL ESTATE SERVICES

# For Lease

# Warehouse Space

Jordana Cahen  
jordana@starboardcre.com  
415.818.5298



**STARBOARD CRE**  
LOCAL • INDEPENDENT • ENTREPRENEURIAL

# Building Summary

<b>Address:</b>	759-761 Clementina St.
<b>Property Type:</b>	Warehouse
<b>Square Ft:</b>	±2,705 SF
<b>Lease Rate:</b>	Contact Agent
<b>Zoning District:</b>	RED-MX – Residential Enclave-Mixed
<b>Year Built:</b>	1951



## Two-Story Warehouse Office

Multi-level warehouse with office



## Roll-Up Garage Access

Roll-up door with two-car garage



### Two-Story Warehouse

Efficient multi-level layout



### Accessory Office Space

Integrated office area



### Roll-Up Garage Door

Easy loading access



### Two-Car Garage

On-site vehicle parking



### Full Kitchen

Complete kitchen setup



### Private Rooms

Two enclosed rooms



### Multiple Bathrooms

One and a half baths



### Natural Light Features

Skylights throughout



### Operable Windows

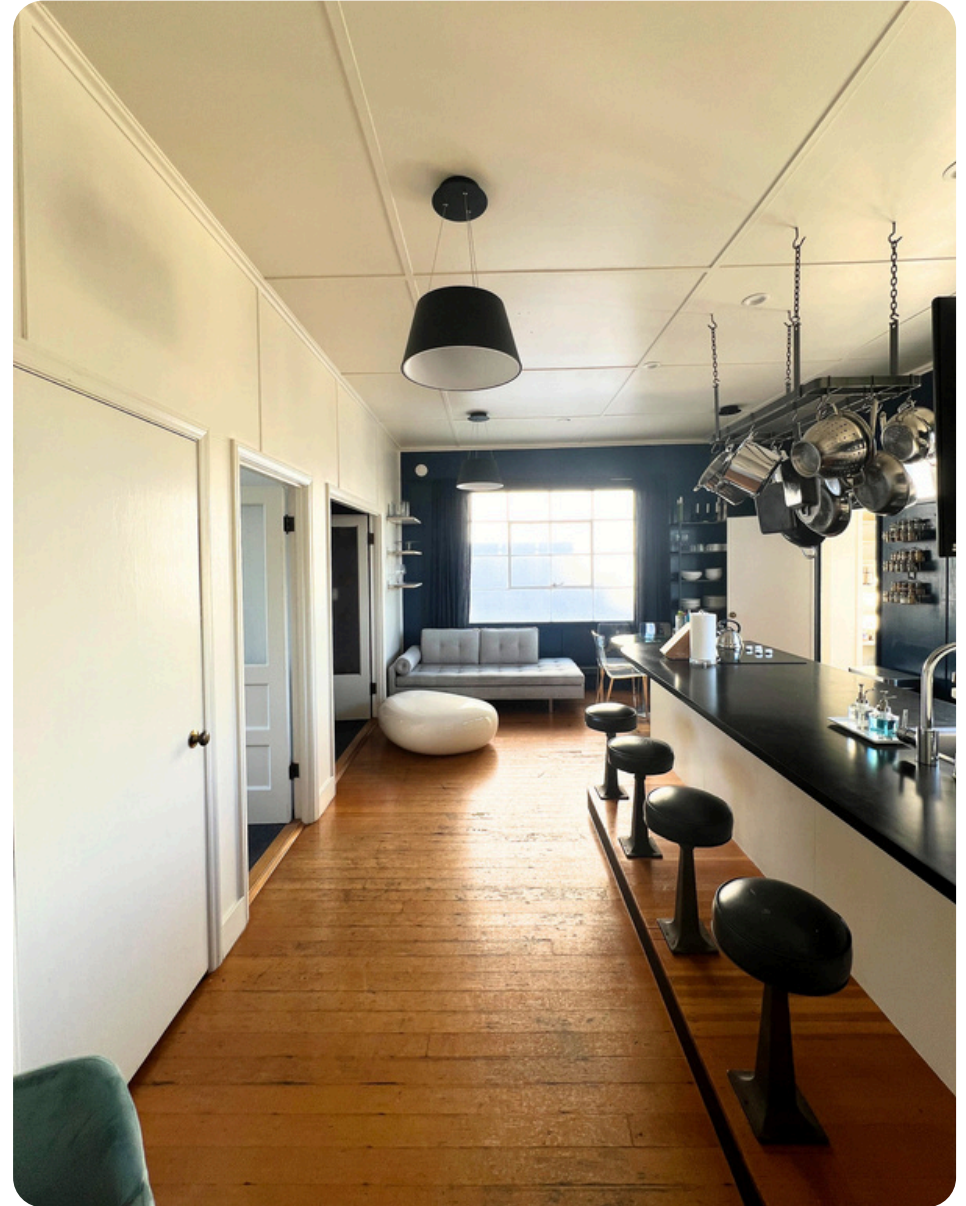
Fresh air access



### In-Building Laundry

Laundry on site.

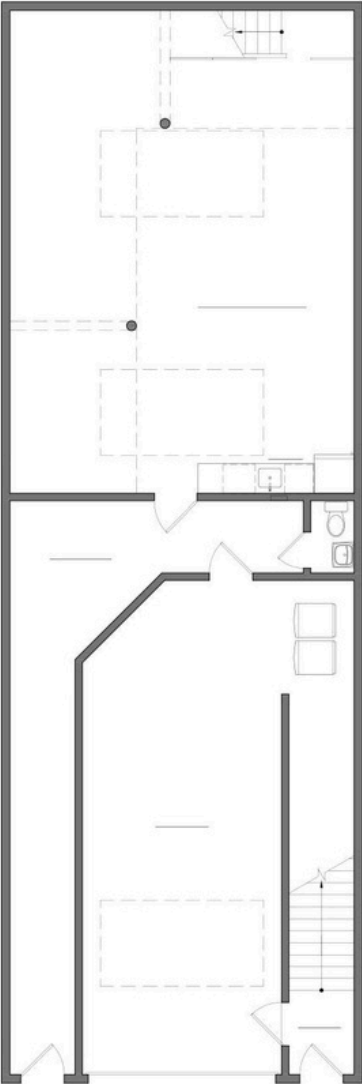
# Images



# Images

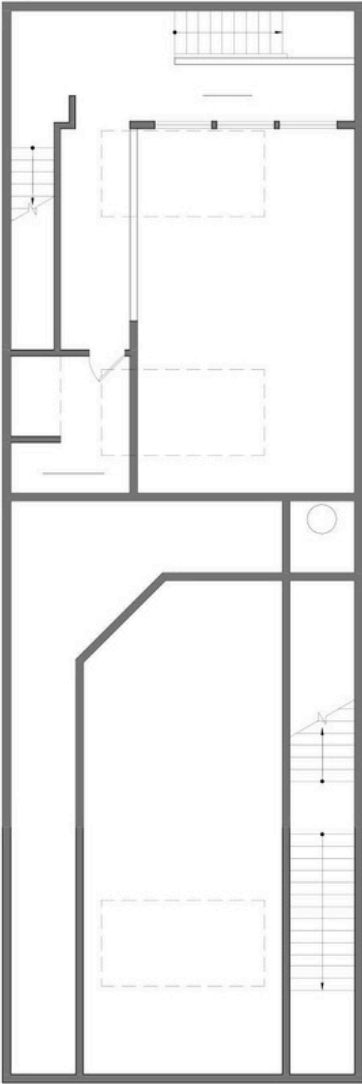


# FloorPlans



Clementina St.

**GROUND FLOOR PLAN**



Clementina St.

**MEZZANINE LEVEL PLAN**



Clementina St.

**SECOND FLOOR PLAN**

# Agent

---



## Jordana Cahen

Leasing & Sales Associate  
jordana@starboardcre.com  
CELL: 415.818.5298  
CA DRE # 02191670

Call

View Profile





**STARBOARD CRE**  
LOCAL • INDEPENDENT • ENTREPRENEURIAL

STARBOARDCRE.COM  
OFC. PHONE 415.765.6900  
49 POWELL STREET, SAN FRANCISCO, CA 94102



## Unique Vision

We see what others miss

## Local Market Leader

No one knows Northern  
California like we do

## Full-Service Firm

We do it all

Locally based, and technology-forward, our brokers are highly qualified experts backed by a full-service, in-house support team who understand the intricacies of San Francisco real estate. Starboard CRE brings decades of brokerage experience representing over 600 million square feet of space with an aggregate lease value of over 10 billion and investments sold over 3 billion.

**CA DRE# 01103056**

