



**STARBOARD CRE**  
LOCAL • INDEPENDENT • ENTREPRENEURIAL

**For Lease**

**111 ELLIS Street**

San Francisco, CA 94102

Creative Full Floor Opportunities  
+/- 3,200 RSF

**Craig Hansson**

[craig@starboardcre.com](mailto:craig@starboardcre.com)

415.710.7768

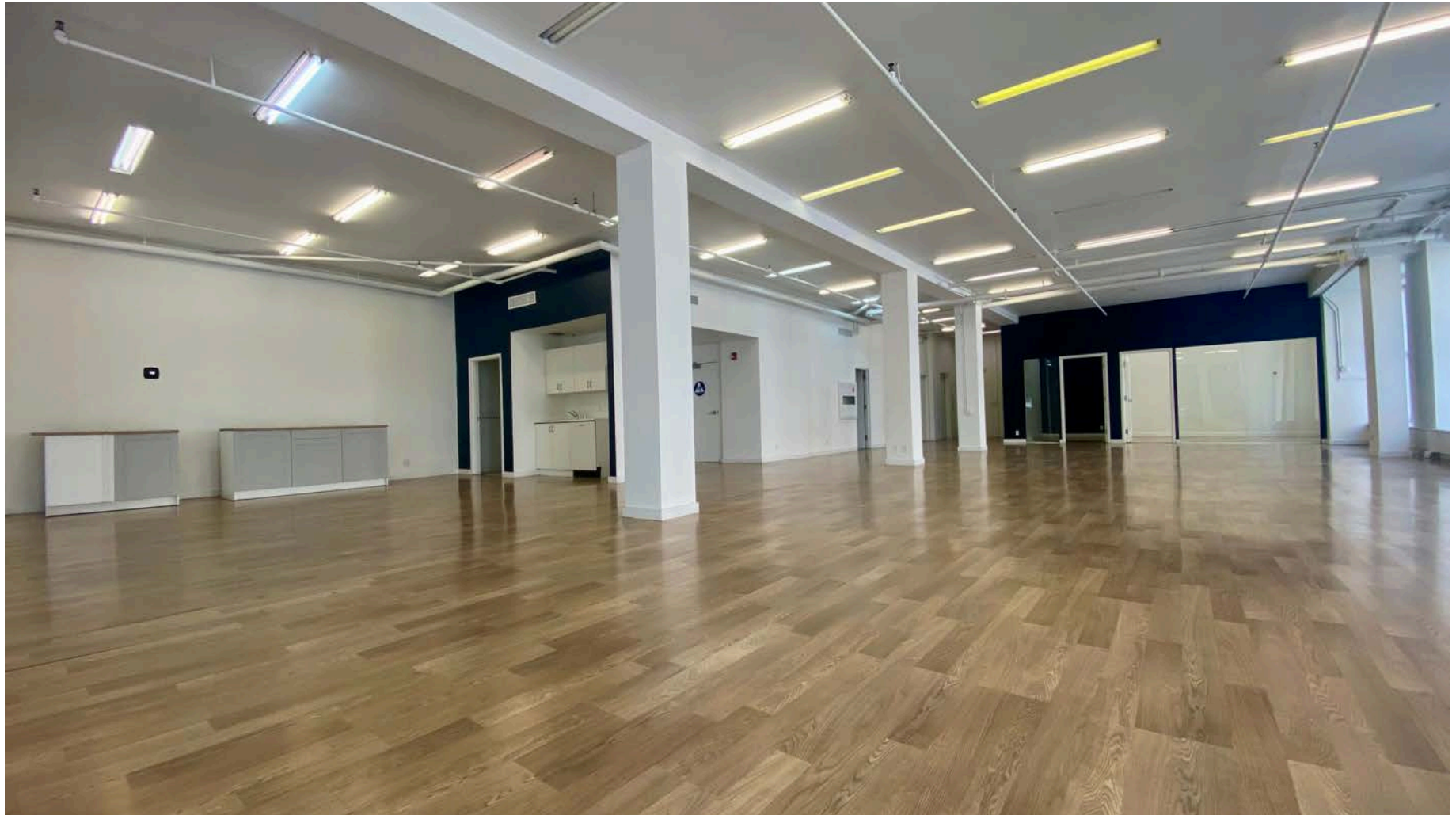


STARBOARDCRE.COM  
49 POWELL STREET, SAN FRANCISCO, CA 94102

<b>Building:</b>	111 ELLIS Street, San Francisco
<b>Square Ft:</b>	3,200 RSF (average floor-plate)
<b>Type:</b>	Office
<b>Term:</b>	Flexible
<b>Floors:</b>	2nd & 3rd
<b>Rate:</b>	Negotiable

- Exceptional Union Square office space
- Immediate Occupancy
- Full floor identity
- Creative, open layouts
- Multiple meeting rooms on each floor
- It is ideal for businesses seeking a prime location with modern amenities and flexible terms





This information has been secured by Starboard CRE from sources believed to be reliable. It is not guaranteed and should be verified before closing any transaction.



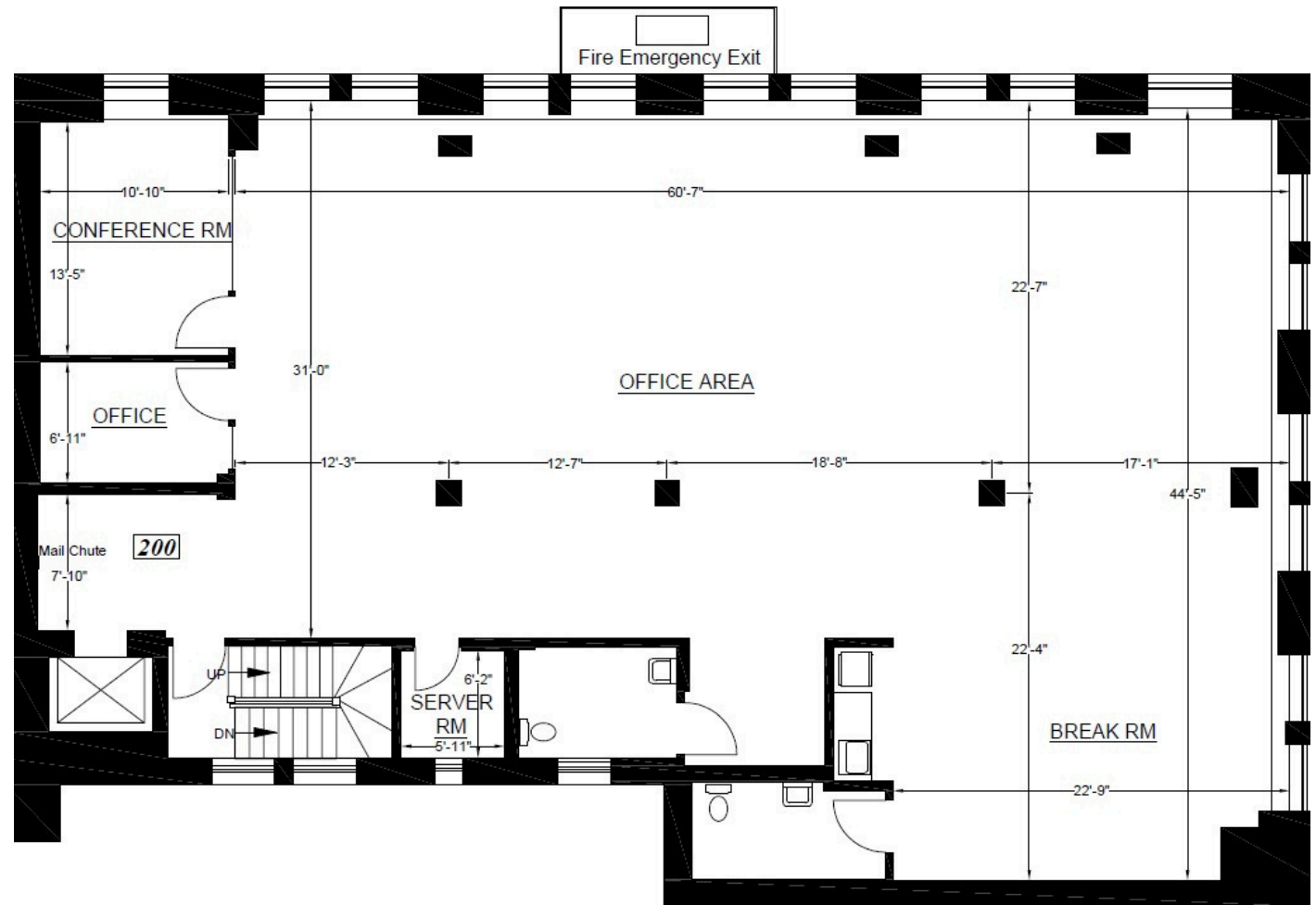
This information has been secured by Starboard CRE from sources believed to be reliable. It is not guaranteed and should be verified before closing any transaction.



This information has been secured by Starboard CRE from sources believed to be reliable. It is not guaranteed and should be verified before closing any transaction.

## ±3,186 RSF

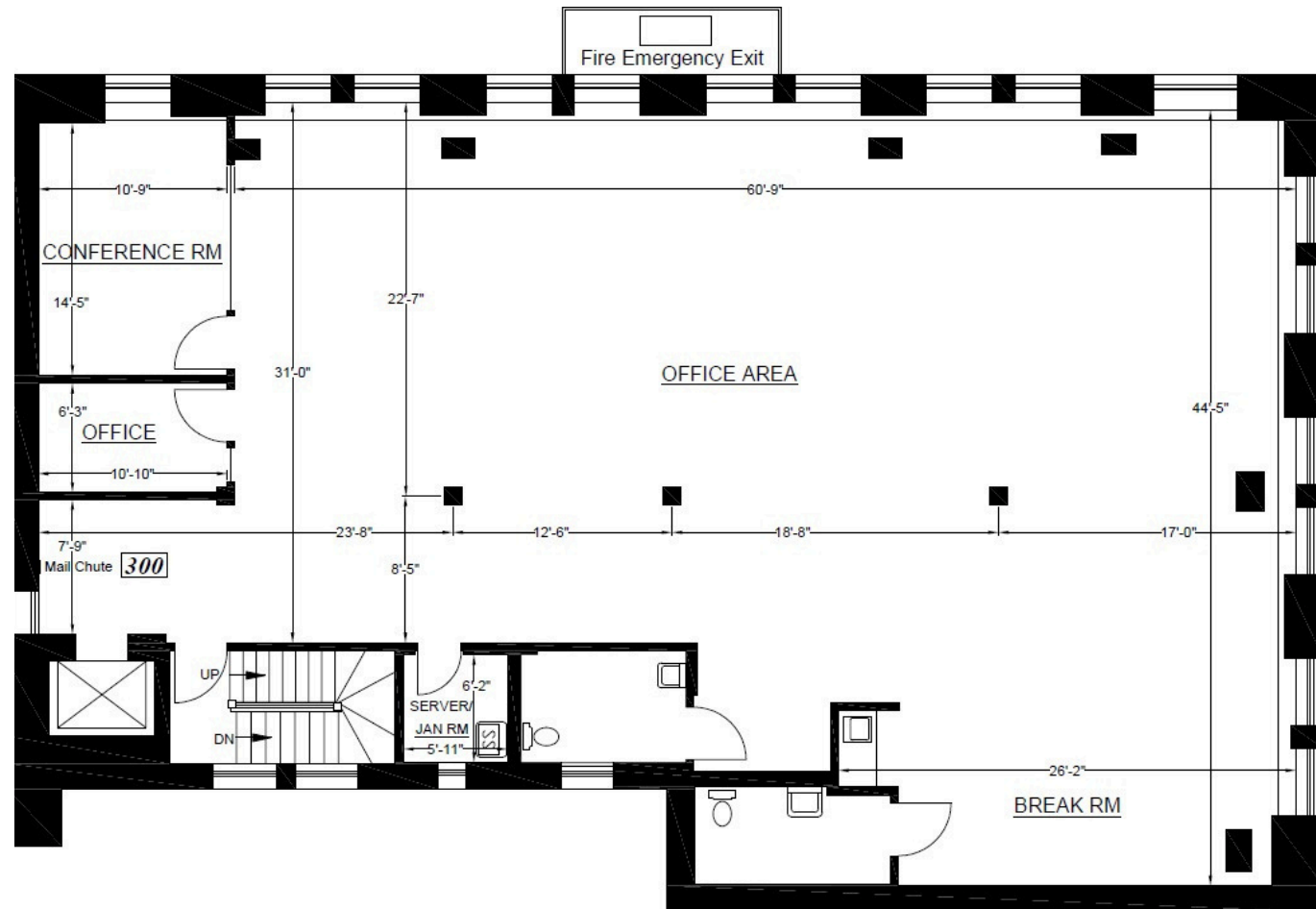
- Available Now
- Full Floor Identity
- Creative, Open Build Out
- 2 Conference Rooms



3D Virtual Tour

±3,192 RSF

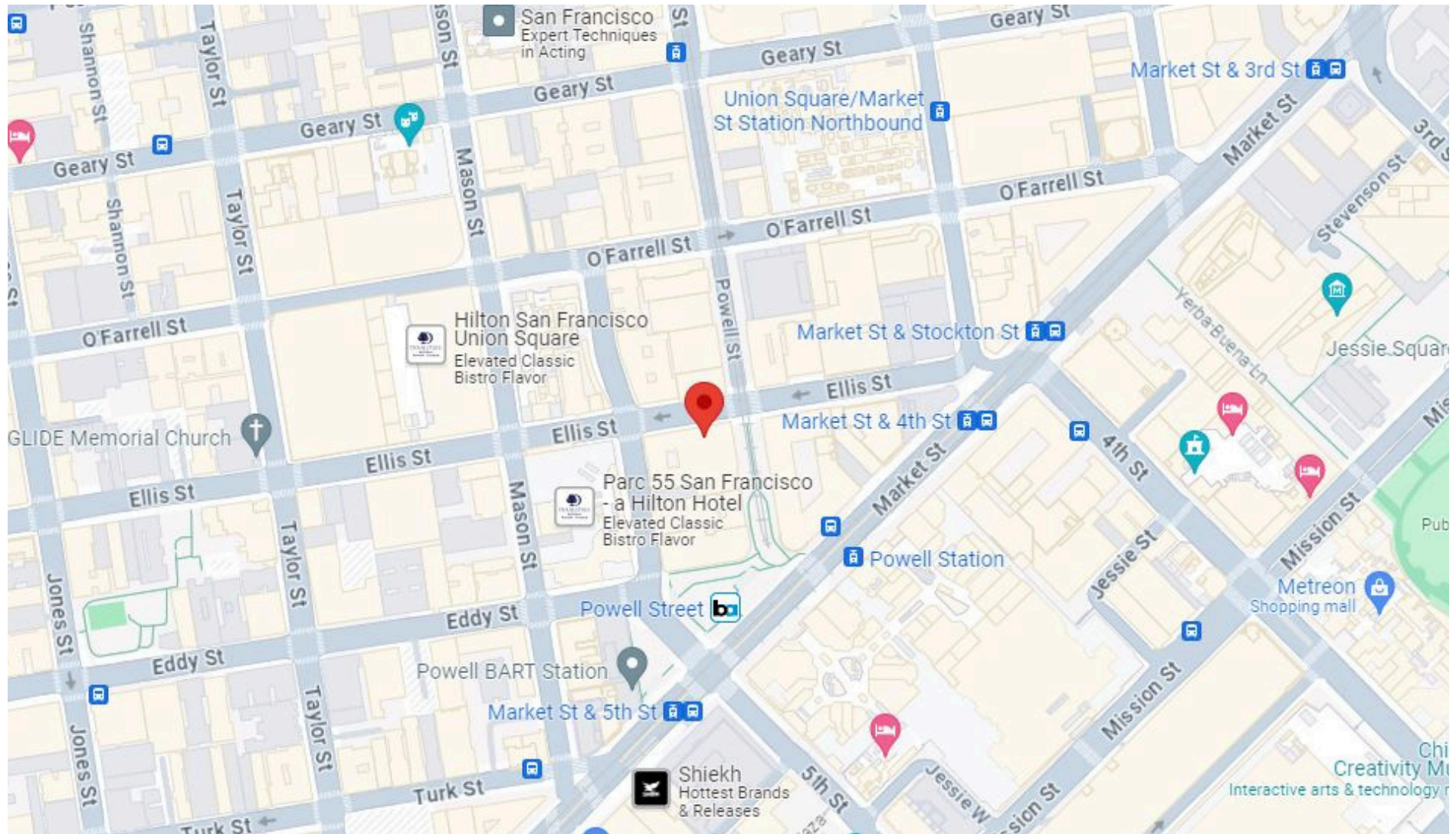
- Available Now
- Full Floor Identity
- Creative, Open Build Out
- 2 Conference Rooms



3D Virtual Tour

# AMENITIES MAP

For Lease



This information has been secured by Starboard CRE from sources believed to be reliable. It is not guaranteed and should be verified before closing any transaction.





## Craig Hansson

Vice President

[craig@starboardcre.com](mailto:craig@starboardcre.com)

CELL: 415.710.7768

CA DRE #01841643

Call

View Profile



**STARBOARD CRE**  
LOCAL • INDEPENDENT • ENTREPRENEURIAL

STARBOARDCRE.COM  
OFC. PHONE 415.765.6900  
49 POWELL STREET, SAN FRANCISCO, CA 94102



**Unique Vision**  
We see what others miss

**Local Market Leader**  
No one knows Northern  
California like we do

**Full-Service Firm**  
We do it all

Locally based, and technology-forward, our brokers are highly qualified experts backed by a full-service, in-house support team who understand the intricacies of San Francisco real estate. Starboard CRE brings decades of brokerage experience representing over 600 million square feet of space with an aggregate lease value of over 10 billion and investments sold over 3 billion.

**CA DRE# 01103056**

