

1600

Geary Boulevard

San Francisco, CA 94115

TCN
WORLDWIDE
REAL ESTATE SERVICES

Office Space

FOR LEASE

\$36/SF – IG

Mark Meier

mark@starboardcre.com

415.299.7042

Hans Hansson

hans@starboardcre.com

415.517.2589



STARBOARD CRE
LOCAL • INDEPENDENT • ENTREPRENEURIAL

BUILDING SUMMARY

Address: 1600 Geary Boulevard

Square Footage: ±4,196 SF

Rate: \$36/SF - IG

Type: Office

Zoning: NCD

Great Owner-User opportunity

Great for medical related uses



Medical or Office Ready

Built-out for medical, office, or education use.



Flexible Space Options

4,196 SQFT divisible into 2,000 SQFT.



High Visibility

Prime Geary Street frontage ensures strong exposure.



Convenient Parking

Adjacent to public parking garage next door.



Accessible Location

Easy access via nearby public transportation.



Central Japantown Setting

Located in Japantown's vibrant commercial district.



Surrounded by Amenities

Close to shops, restaurants, hospitals, and services.



Ideal for Growth

Perfect for practices seeking long-term expansion.



STARBOARD CRE
LOCAL • INDEPENDENT • ENTREPRENEURIAL

IMAGES



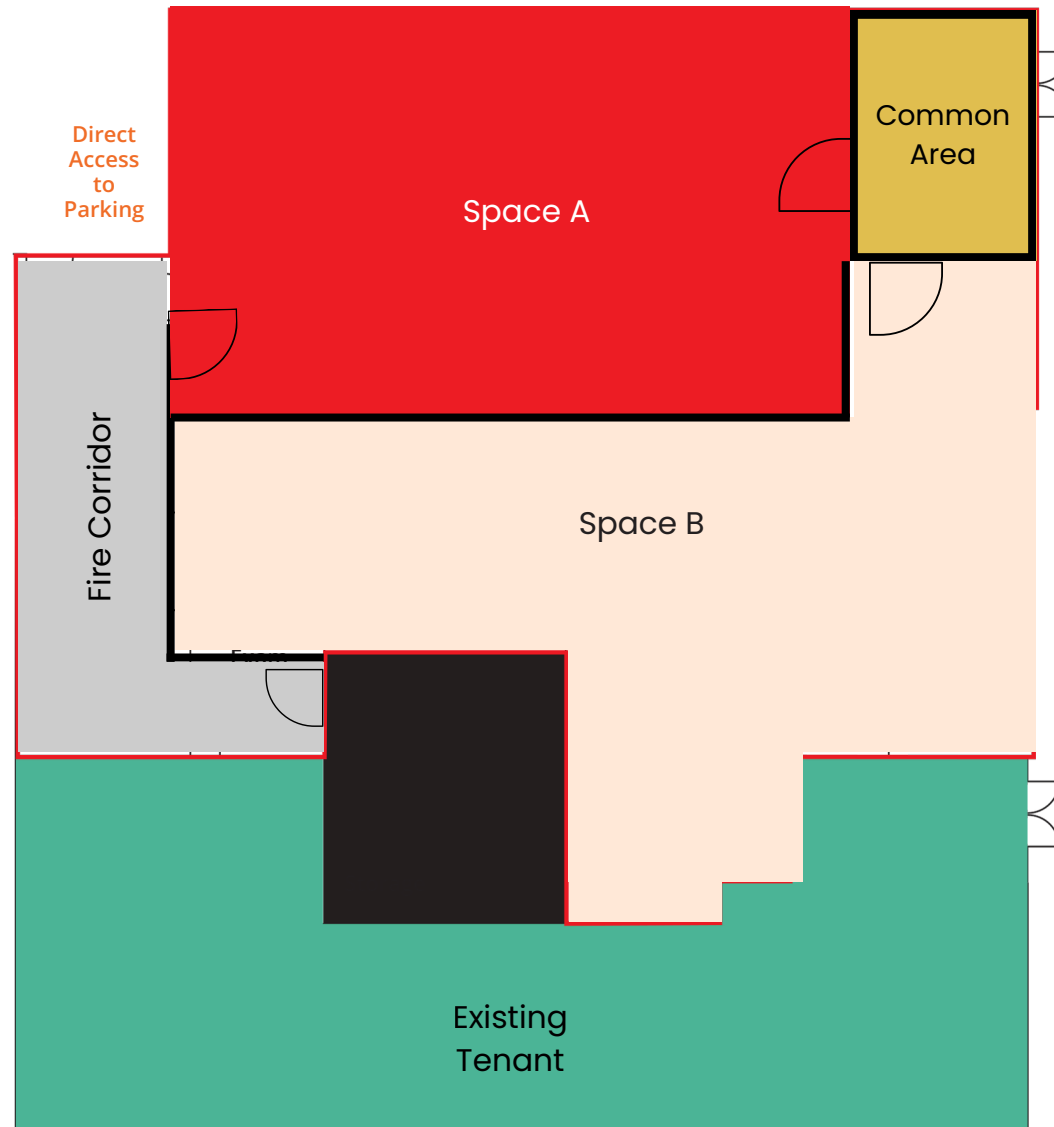
IMAGE



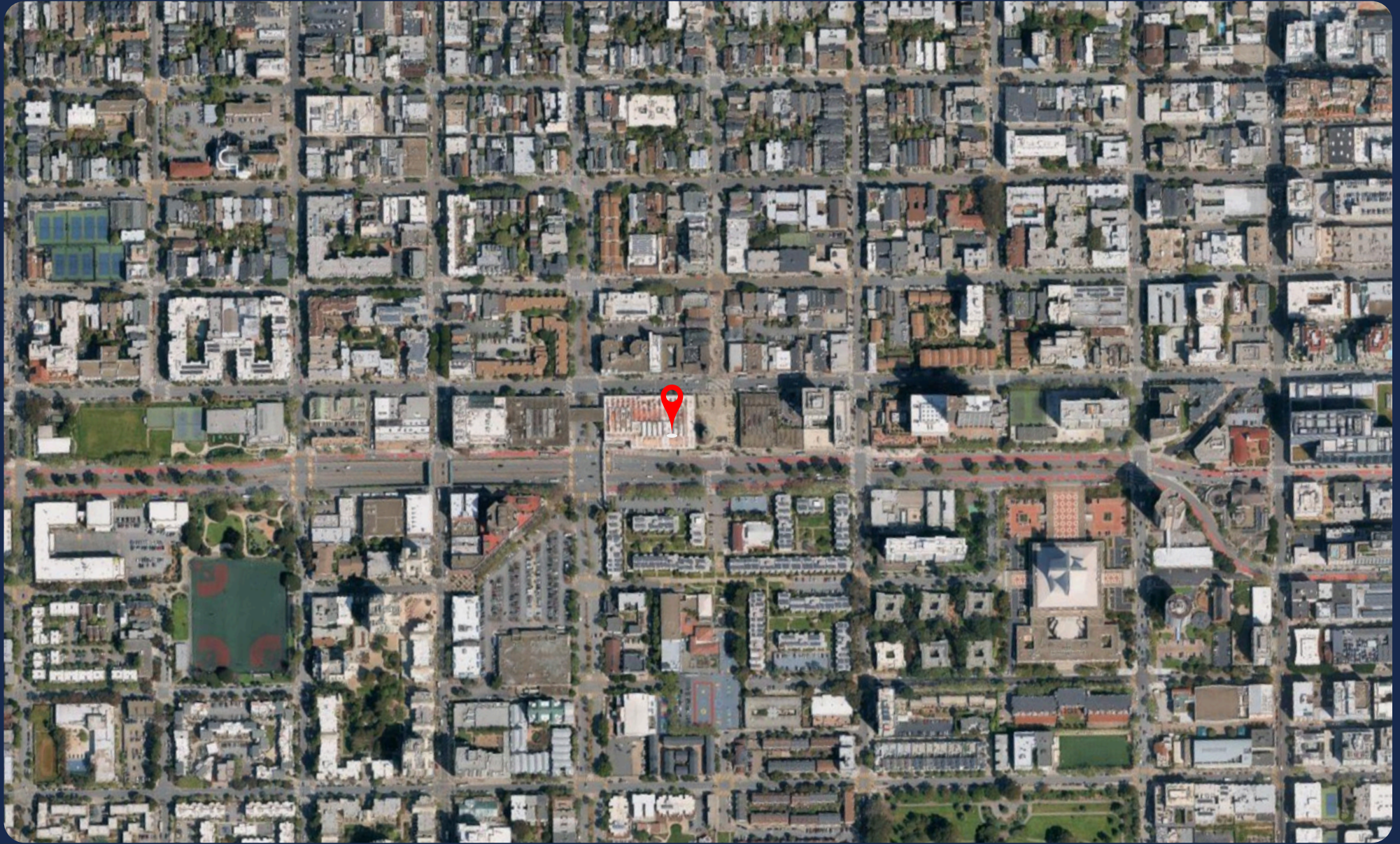
FLOOR PLAN

Note:

Spaces A & B are available as one combined unit of 4,196 SF or can be leased separately as divisible spaces of ~2,000 SF each.



AIRIAL VIEW



Agents



Mark Meier

Lease and Sales Senior Associate

mark@starboardcre.com

CELL: 415.299.7042

CA DRE # 02047169

Call

View Profile



Hans Hansson

President / Broker of Record

hans@starboardcre.com

CELL: 415.517.2589

CA DRE # 00872902

Call

View Profile



STARBOARD CRE
LOCAL • INDEPENDENT • ENTREPRENEURIAL



STARBOARD CRE
LOCAL • INDEPENDENT • ENTREPRENEURIAL

STARBOARDCRE.COM
OFC. PHONE 415.765.6900
49 POWELL STREET, SAN FRANCISCO, CA 94102



Unique Vision

We see what others miss

Local Market Leader

No one knows Northern
California like we do

Full-Service Firm

We do it all

Locally based, and technology-forward, our brokers are highly qualified experts backed by a full-service, in-house support team who understand the intricacies of San Francisco real estate. Starboard CRE brings decades of brokerage experience representing over 600 million square feet of space with an aggregate lease value of over 10 billion and investments sold over 3 billion.

CA DRE# 01103056

TCN
WORLDWIDE
REAL ESTATE SERVICES

AREA
ASSOCIATED REALTY OF THE AMERICAS