



STARBOARD CRE
LOCAL • INDEPENDENT • ENTREPRENEURIAL

For Lease

111 ELLIS Street

San Francisco, CA 94102

Creative Full Floor Opportunities
+/- 3,200 RSF

Mario Previtali
415.755.8905



STARBOARDCRE.COM
49 POWELL STREET, SAN FRANCISCO, CA 94102

Building:	111 ELLIS Street, San Francisco
Square Ft:	3,200 RSF (average floor-plate)
Type:	Office
Term:	Flexible
Floors:	2nd & 3rd
Rate:	Negotiable

- Exceptional Union Square office space
- Immediate Occupancy
- Full floor identity
- Creative, open layouts
- Multiple meeting rooms on each floor
- It is ideal for businesses seeking a prime location with modern amenities and flexible terms





This information has been secured by Starboard CRE from sources believed to be reliable. It is not guaranteed and should be verified before closing any transaction.



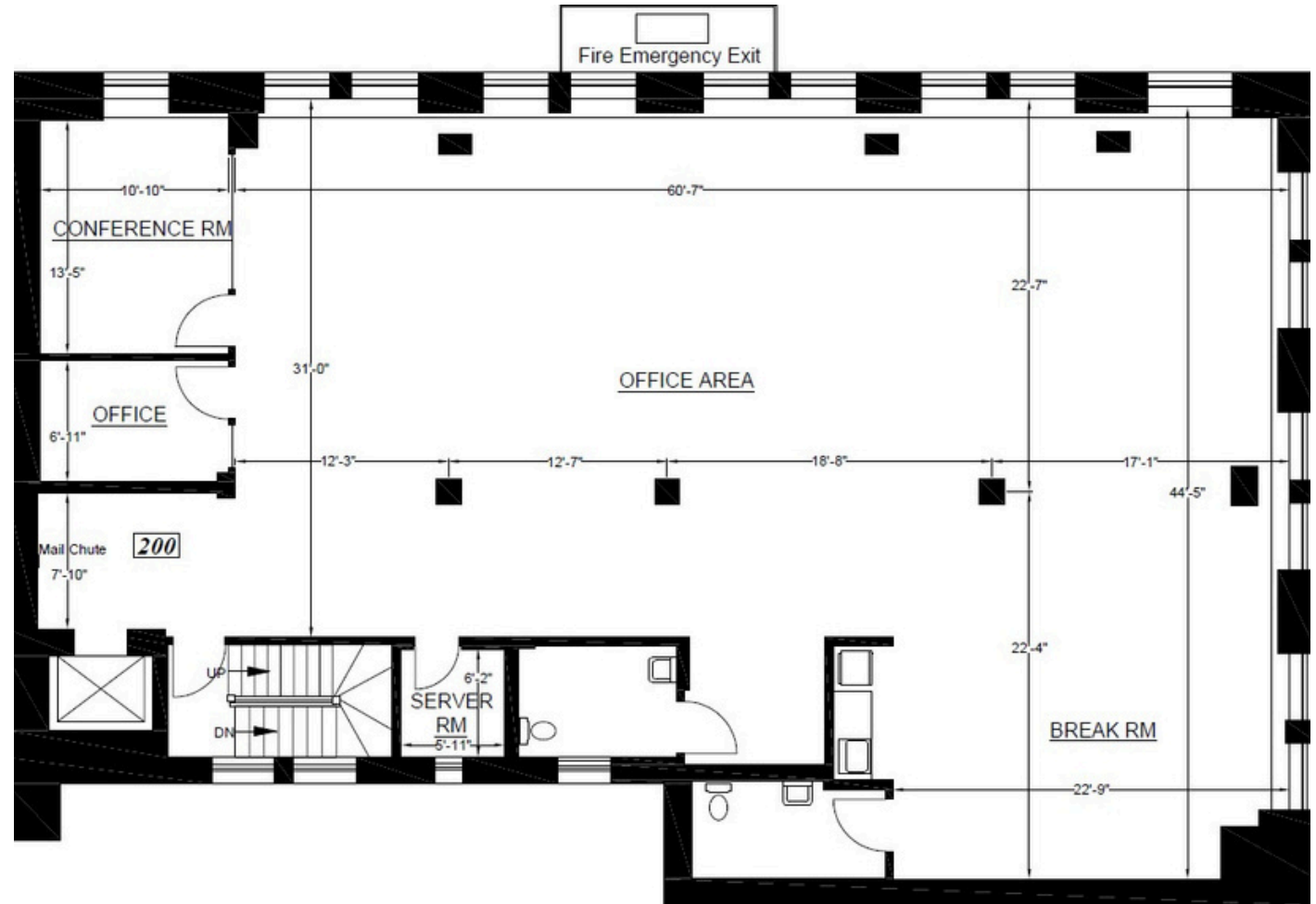
This information has been secured by Starboard CRE from sources believed to be reliable. It is not guaranteed and should be verified before closing any transaction.



This information has been secured by Starboard CRE from sources believed to be reliable. It is not guaranteed and should be verified before closing any transaction.

±3,186 RSF

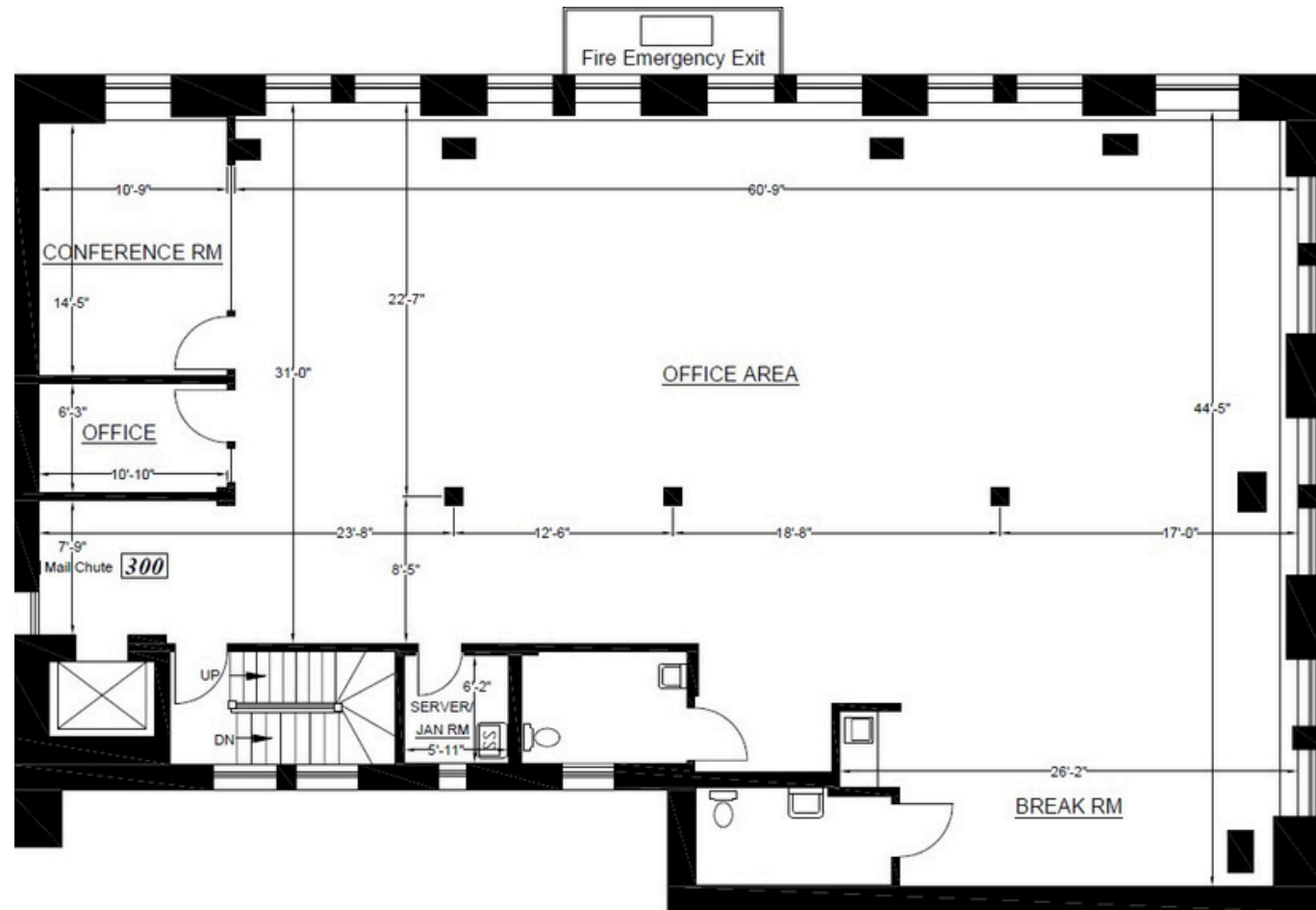
- Available Now
- Full Floor Identity
- Creative, Open Build Out
- 2 Conference Rooms



3D Virtual Tour

±3,192 RSF

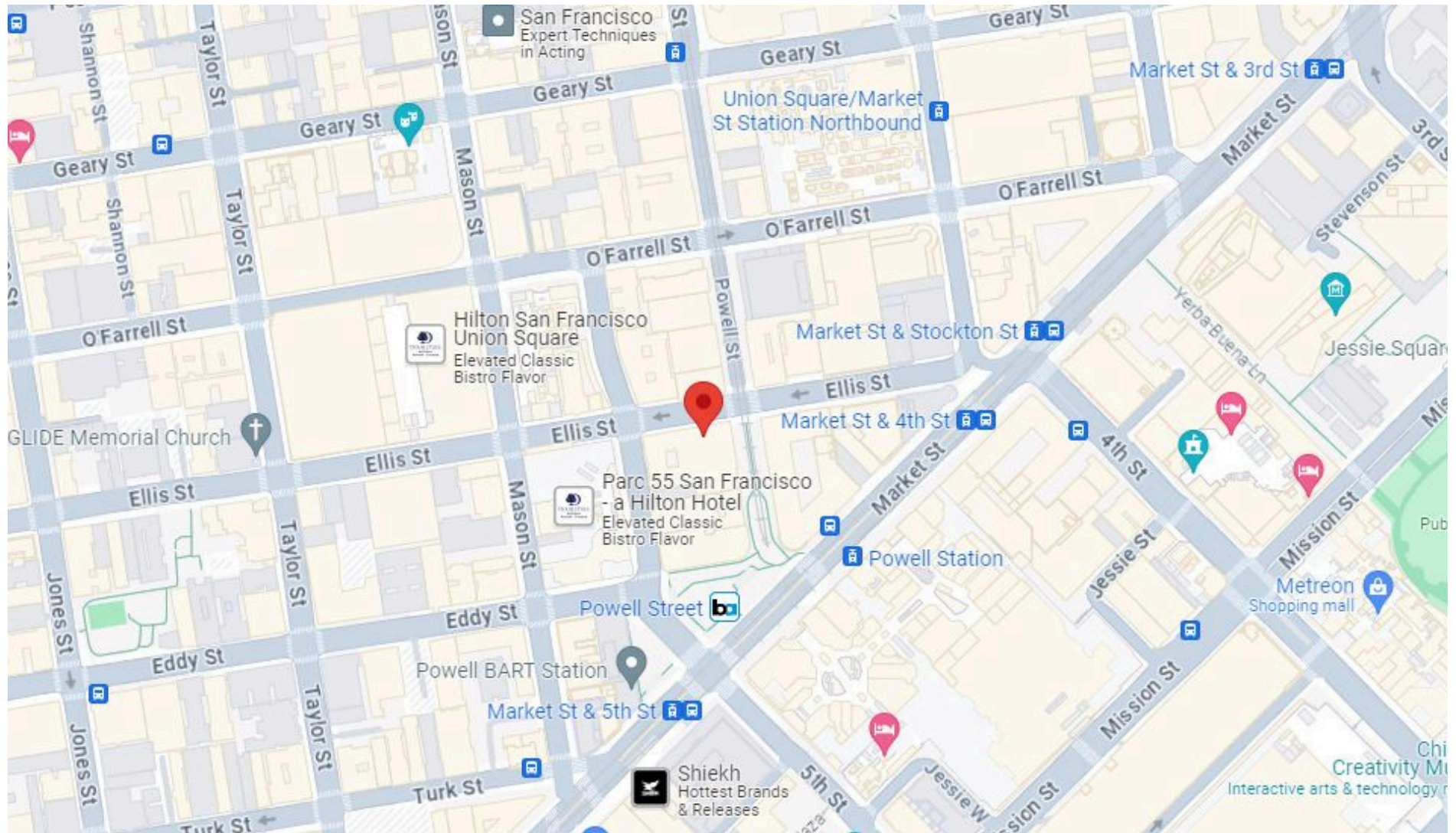
- Available Now
- Full Floor Identity
- Creative, Open Build Out
- 2 Conference Rooms



3D Virtual Tour

AMENITIES MAP

For Lease



This information has been secured by Starboard CRE from sources believed to be reliable. It is not guaranteed and should be verified before closing any transaction.



Mario Previtali

Senior Leasing & Sales Associate

mario@starboardcre.com

CELL: 415.755.8905

CA DRE # 01902075

Call

View Profile



STARBOARD CRE
LOCAL • INDEPENDENT • ENTREPRENEURIAL

STARBOARDCRE.COM
OFC. PHONE 415.765.6900
49 POWELL STREET, SAN FRANCISCO, CA 94102



Unique Vision
We see what others miss

Local Market Leader
No one knows Northern
California like we do

Full-Service Firm
We do it all

Locally based, and technology-forward, our brokers are highly qualified experts backed by a full-service, in-house support team who understand the intricacies of San Francisco real estate. Starboard CRE brings decades of brokerage experience representing over 600 million square feet of space with an aggregate lease value of over 10 billion and investments sold over 3 billion.

CA DRE# 01103056

