



277

Carolina Street

San Francisco, CA 94103

For Lease

Highly Creative Flex Space
+/- 4,500 RSF

Colton Africano

colton@starboardcre.com
415.801.0705

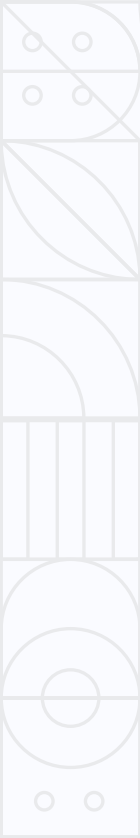
Craig Hansson

craig@starboardcre.com
415.710.7768



277 Carolina Street

Square Ft:	+/- 4,500 RSF
Rate:	Inquire w/ Broker
Available:	Now
Term:	Negotiable
Property Type:	Creative Flex Space



Highlights

- Stand-Alone Potrero Hill Building
- High-End Finishes Throughout
- Exposed Timber Ceilings
- Polished Concrete Floors
- One Large Workshop/Meeting Room
- One (1) Glass Private Office
- Two (2) Meeting Rooms (Upstairs)
- Three (3) Restrooms One (1) W/ Shower
- Open Kitchen/Dining Area
- Large Open Bullpen Work Areas
- High Exposed Ceilings (Upstairs)

Matterport View



DESCRIPTION

277 Carolina Street is a highly creative flex space located in the heart of Potrero Hill, San Francisco. This stand-alone building offers +/- 4,500 RSF with high-end finishes throughout, exposed timber ceilings, and polished concrete floors. The space includes one large workshop/meeting room, a glass private office, two upstairs meeting rooms, and three restrooms, one with a shower. Ideal for businesses looking for an open kitchen, dining area, and large bullpen workspaces, all within a sleek, modern design.



IMAGES



IMAGES



IMAGES

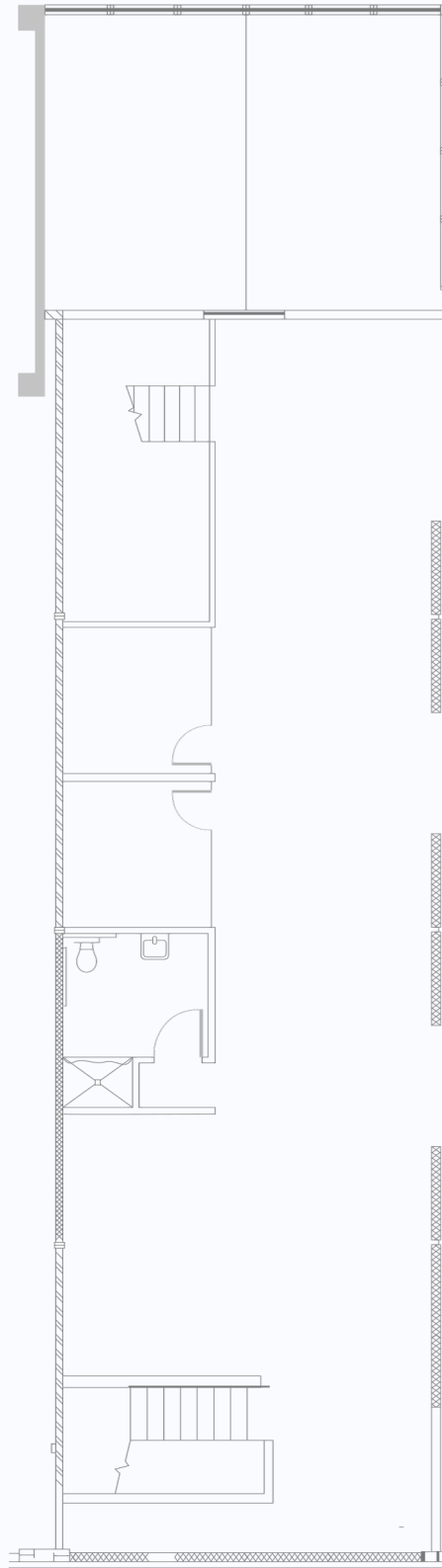


IMAGE



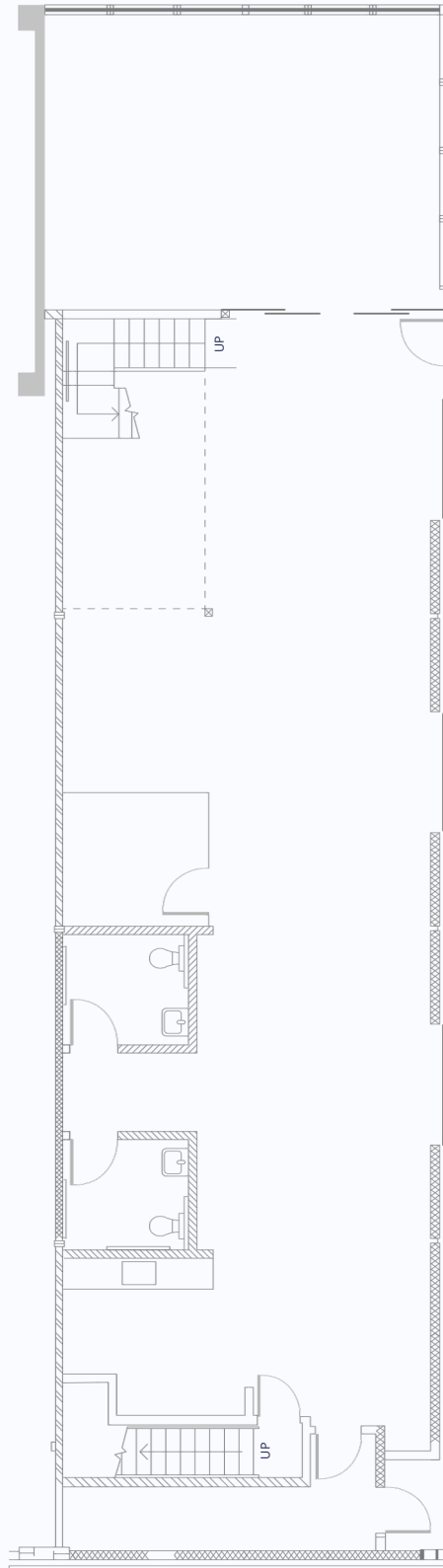
FLOORPLAN

MEZZANINE

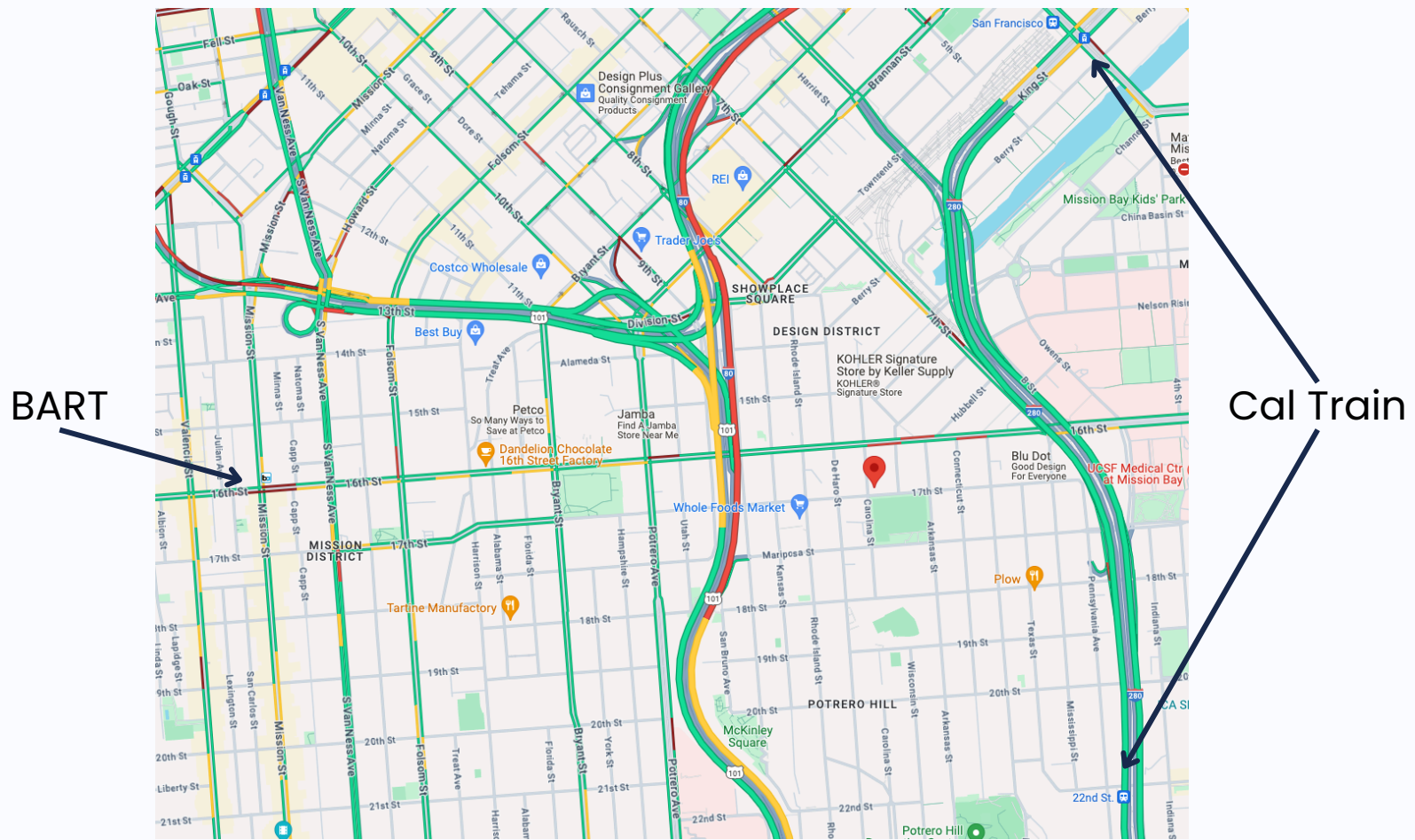


FLOORPLAN

FIRST FLOOR



TRANSIT & AMENITIES MAP



TRANSIT & AMENITIES

Nearby Tenants

- Plaid
- Cruise
- Bayer
- Strava
- Samsara
- Invitae
- Airbnb
- Google
- Dropbox
- Pinterest
- Splunk
- Adobe
- Cisco
- Merck
- UCSF

Restaurants/Cafes

- Niku Steakhouse
- Cracked & Battered - Potrero Hill
- Wolfes Lunch
- Trick Dog
- Anchor Brewing Company
- Anchor Public Taps
- Tartine Manufactory
- Starbucks
- Sightglass Coffee
- Whole Foods

Transportation

- Close proximity to Mission Bay
- Nearby Ground Zero / Mission AI Hub
- 22nd Street Caltrain Station
- King Street Caltrain Station
- Public Transportation
- Close proximity to I-80, I-280, US 101
- Across from Jackson Park



AGENTS



Colton Africano

Leasing & Sales Agent
colton@starboardcre.com
CELL: 415.801.0705
CA DRE # 02140019

Call

View Profile



Craig Hansson

Vice President
craig@starboardcre.com
CELL: 415.710.7768
CA DRE #01841643

Call

View Profile





STARBOARD CRE
LOCAL • INDEPENDENT • ENTREPRENEURIAL

STARBOARDCRE.COM
49 POWELL STREET, SAN FRANCISCO, CA 94102



Unique Vision

We see what others miss

Local Market Leader

No one knows Northern California like we do

Full-Service Firm

We do it all

Locally based, and technology-forward, our brokers are highly qualified experts backed by a full-service, in-house support team who understand the intricacies of San Francisco real estate. Starboard CRE brings decades of brokerage experience representing over 600 million square feet of space with an aggregate lease value of over 10 billion and investments sold over 3 billion.



CA DRE# 01103056