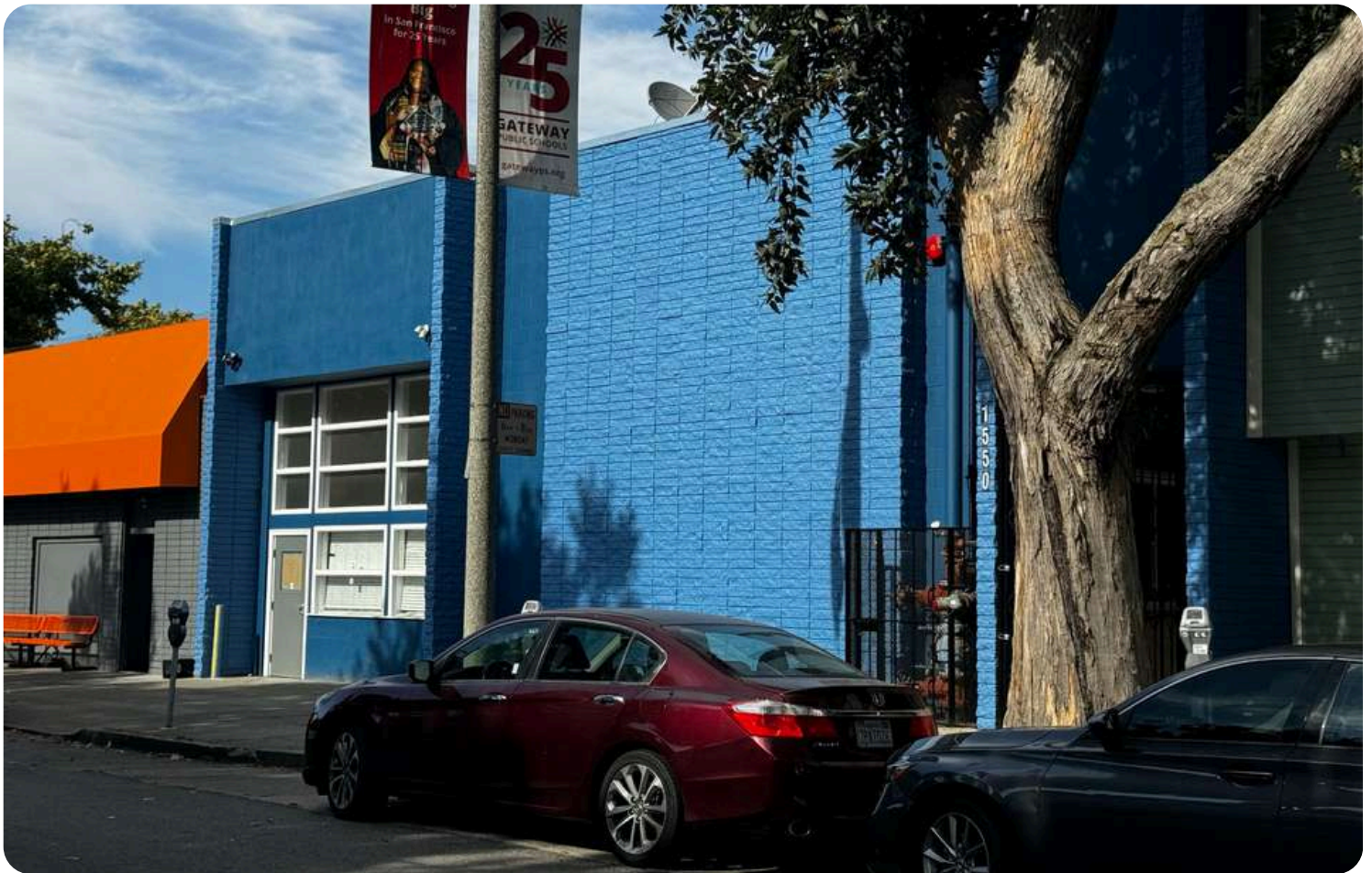


1550

Steiner Street

San Francisco, CA 94115



For Lease

Great Owner User Building
SBA Financing Available

Hans Hansson

hans@starboardcre.com
415.517.2589

Craig Hansson

craig@starboardcre.com
415.710.7768

STARBOARDCRE.COM | M. 415-710-7768 | E: CRAIG@STARBOARDCRE.COM

This information has been secured by Starboard CRE from sources believed to be reliable. It is not guaranteed and should be verified before closing any transaction. CA DRE 01103056



STARBOARD CRE
LOCAL • INDEPENDENT • ENTREPRENEURIAL

1550 Steiner Street

Square Ft: ± 7,500 SF

Parcel Area: ± 8,868 SF

Type: Office/Flex

Rate: \$34.00 IG

HIGHLIGHTS

- Free Standing Property right off the Geary Corridor.
- Column-free space with 20 ft high ceilings throughout.
- Perfect owner-user opportunity.
- Across the street from a beautiful park.
- Approximately 7,500 SF of column-free space
- Spacious parcel area of approximately 8,868 SF
- Located right off the Geary Corridor



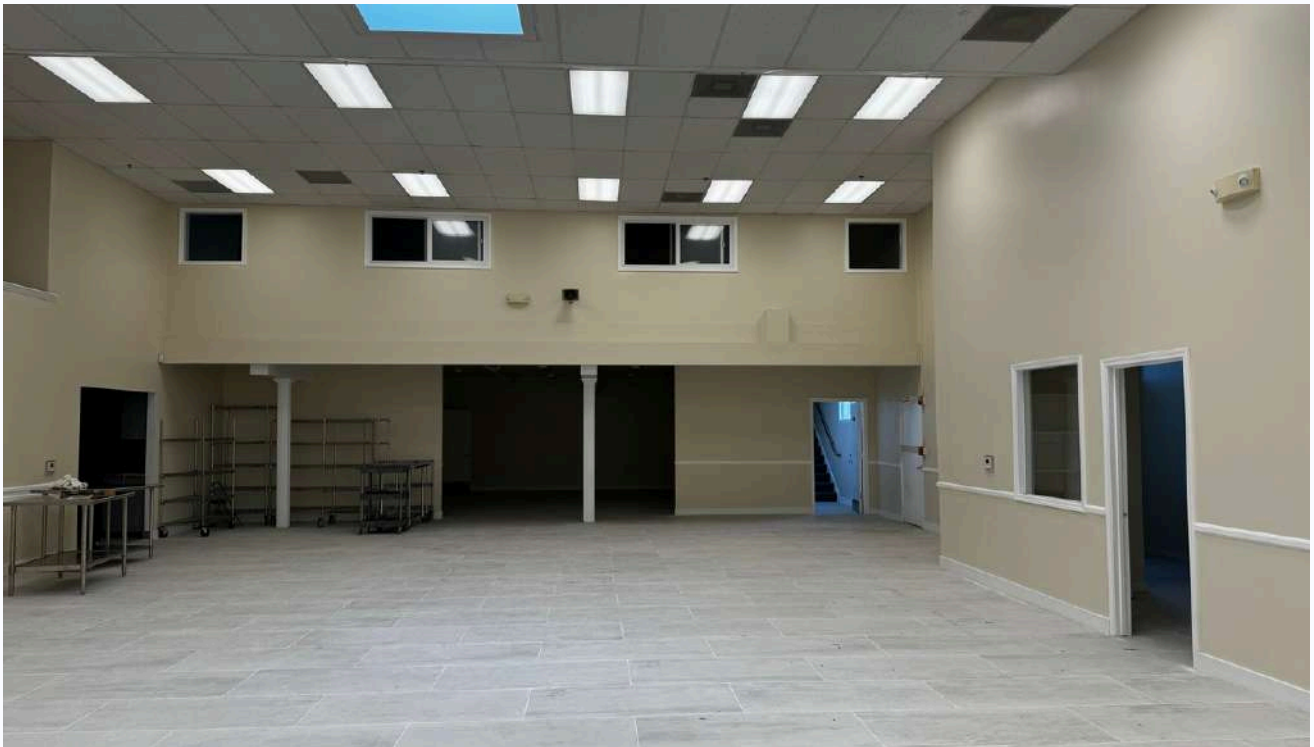
DESCRIPTION

Starboard Commercial Real Estate is pleased to present the opportunity to own a perfect owner-user property at 1550 Steiner St., San Francisco, CA 94115. This exceptional free-standing property is strategically located right off the bustling Geary Corridor. Boasting approximately 7,500 square feet of column-free space with impressive 20-foot high ceilings throughout, this property offers unparalleled flexibility and potential for a variety of uses.

Set on a generous parcel area of approximately 8,868 square feet, this property provides ample space for your business operations or investment needs. Situated across the street from a beautiful park, the location combines urban convenience with a touch of nature, creating an ideal environment for both work and leisure.



IMAGES



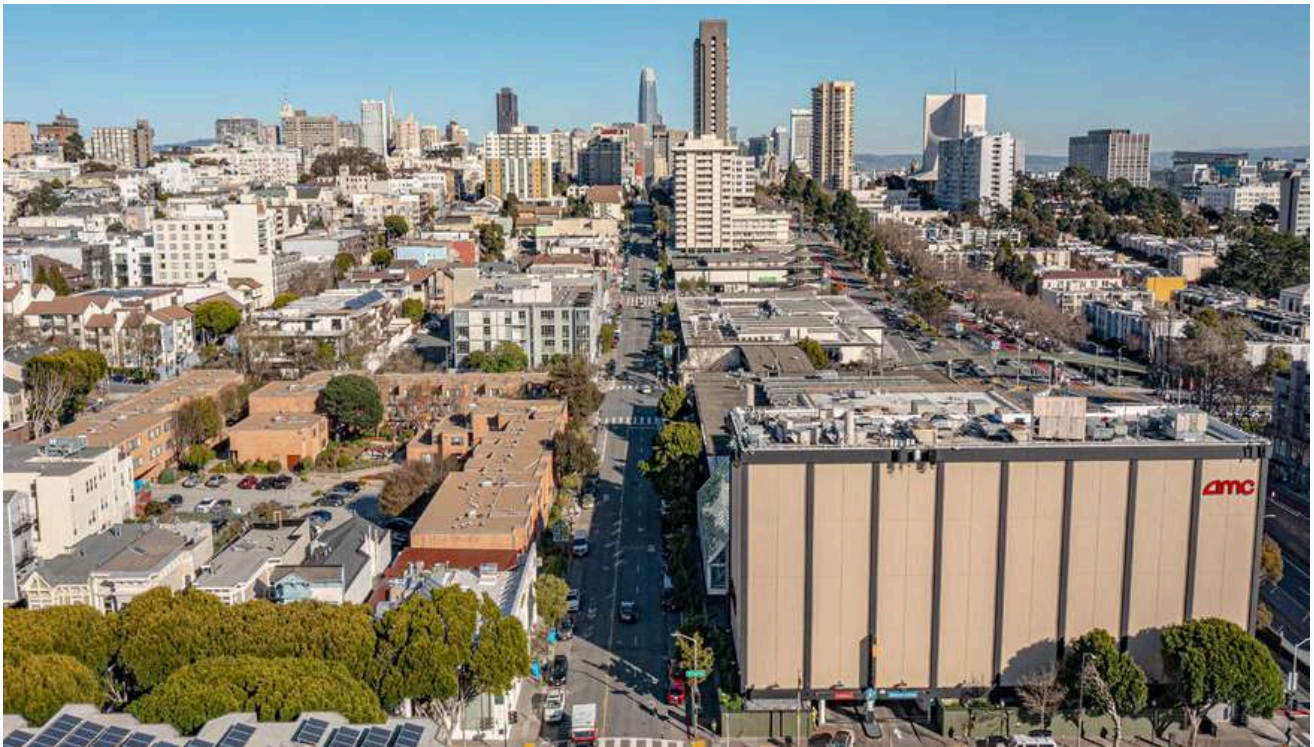
IMAGES



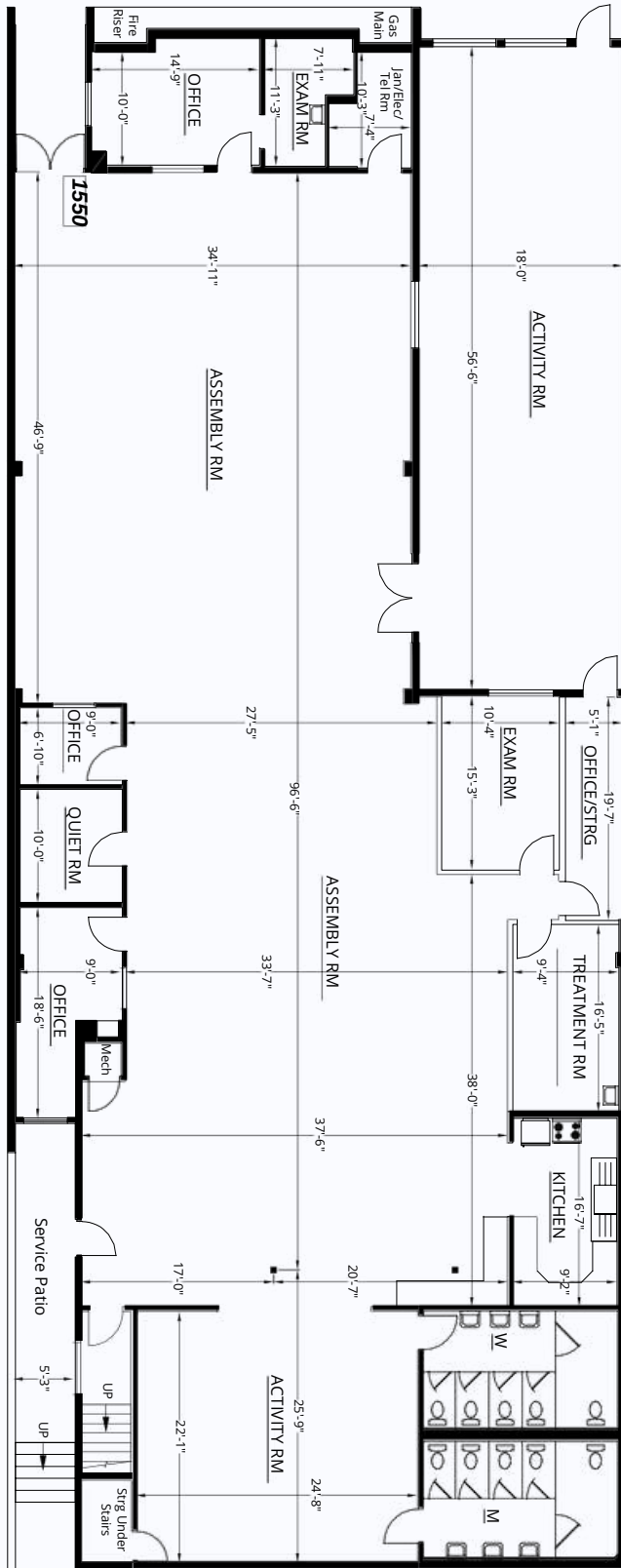
IMAGES



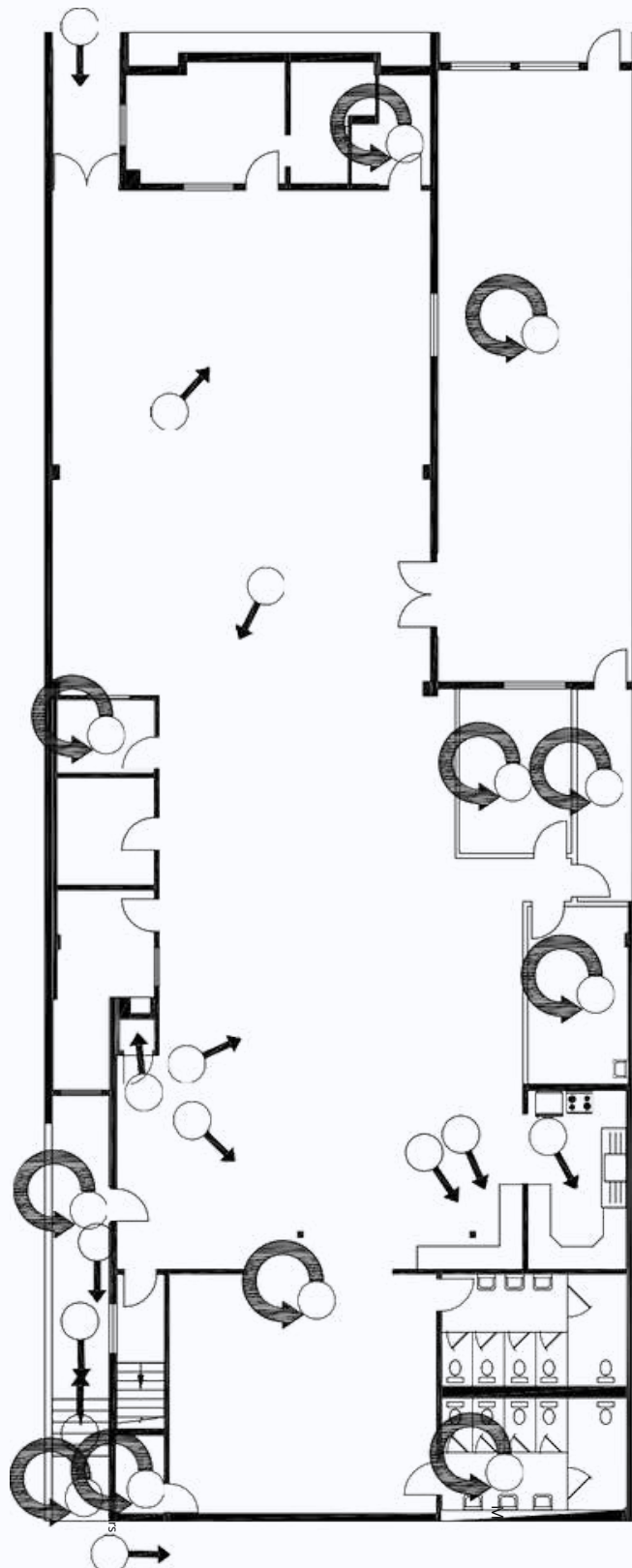
IMAGES



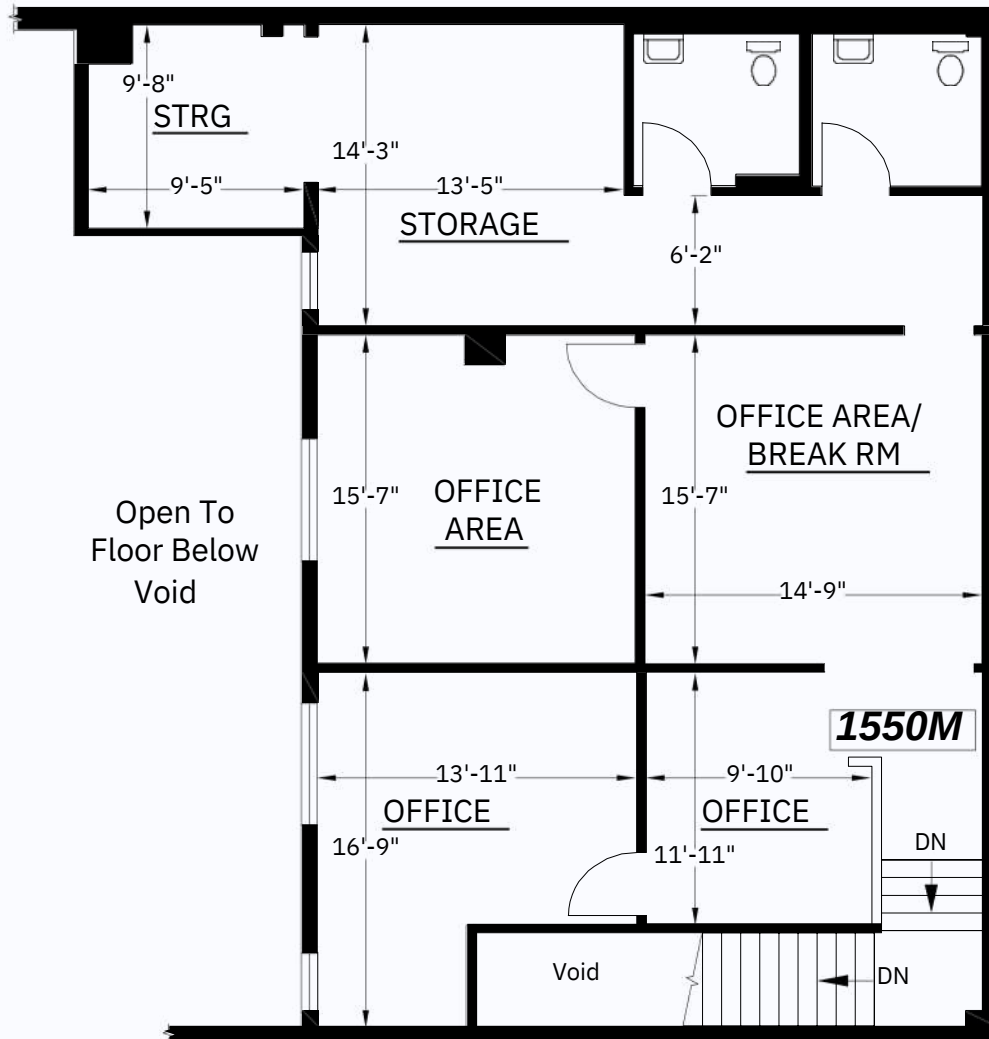
FLOORPLAN



FLOORPLAN



FLOORPLAN | MEZZANINE



AGENTS



Hans Hansson

President / Broker of Record
hans@starboardcre.com
CELL: 415.517.2589
CA DRE # 00872902

Call

View Profile



Craig Hansson

Vice President
craig@starboardcre.com
CELL: 415.710.7768
CA DRE #01841643

Call

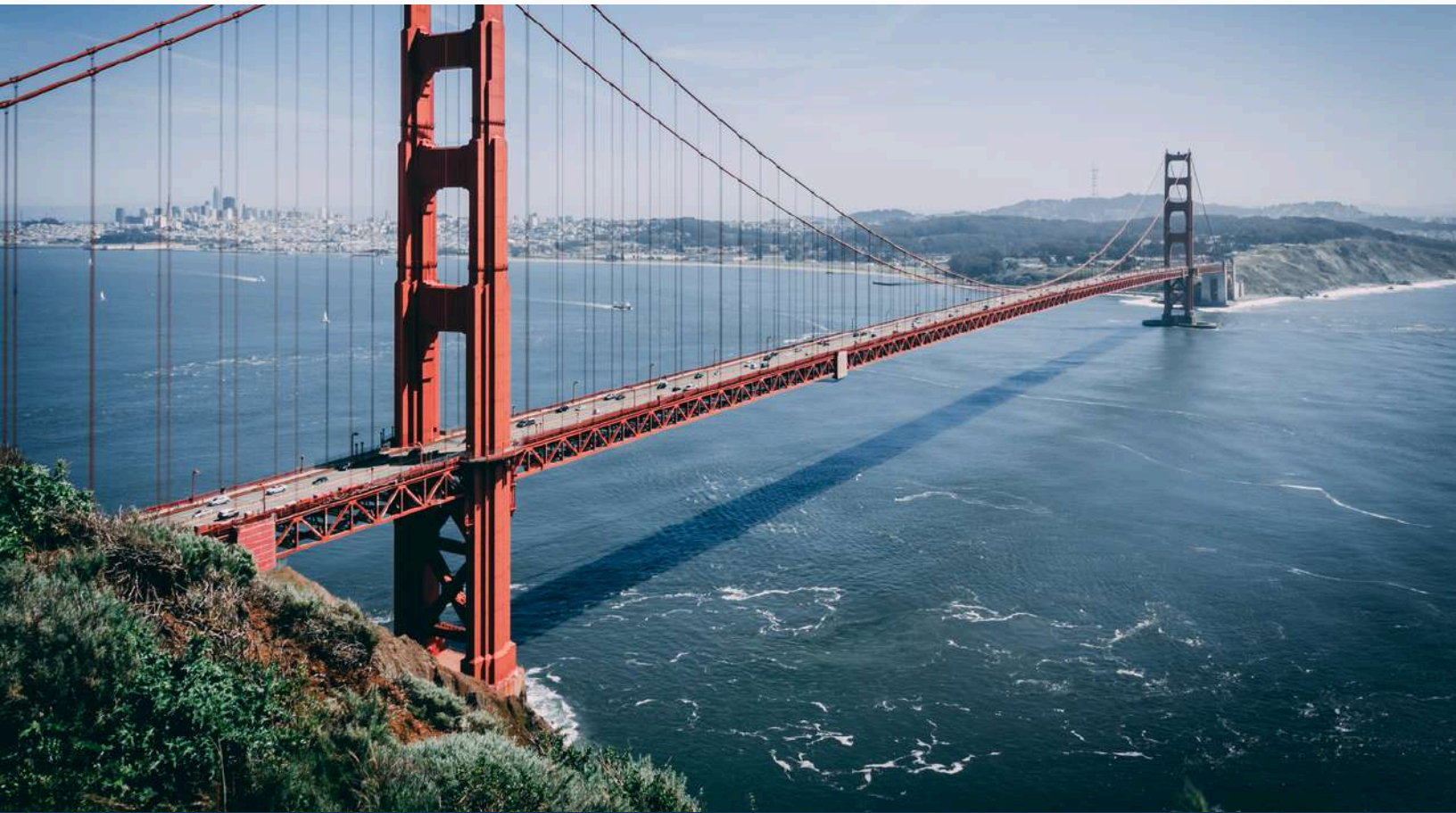
View Profile





STARBOARD CRE
LOCAL • INDEPENDENT • ENTREPRENEURIAL

STARBOARDCRE.COM
49 POWELL STREET, SAN FRANCISCO, CA 94102



Unique Vision

We see what others miss

Local Market Leader

No one knows Northern
California like we do

Full-Service Firm

We do it all

Locally based, and technology-forward, our brokers are highly qualified experts backed by a full-service, in-house support team who understand the intricacies of San Francisco real estate. Starboard CRE brings decades of brokerage experience representing over 600 million square feet of space with an aggregate lease value of over 10 billion and investments sold over 3 billion.



CA DRE# 01103056