



STARBOARD CRE
LOCAL • INDEPENDENT • ENTREPRENEURIAL

Retail For Lease

262 SUTTER STREET

San Francisco, CA 94108

UNION SQUARE
GROUND FLOOR RETAIL SPACE

Chayanee Jantaradaval (Nim)

415.860.9546



STARBOARDCRE.COM
49 POWELL STREET, SAN FRANCISCO, CA 94102

OVERVIEW

For Lease

Size: 1,378 RSF + Basement Storage
Floor: Ground Floor
Term: Flexible
Type: Retail

A ground-floor retail space is available at 262 Sutter Street in Union Square, San Francisco, featuring 1,378 RSF with flexible leasing options. This prime location offers high visibility in a dynamic area known for its shopping, dining, and entertainment, ideal for businesses looking to thrive in a bustling environment.

- 1 Office
- 3 Private rooms
- 1 Private Bathroom

3% Commission to procuring broker



This information has been secured by Starboard CRE from sources believed to be reliable. It is not guaranteed and should be verified before closing any transaction.

STARBOARD CRE
LOCAL • INDEPENDENT • ENTREPRENEURIAL

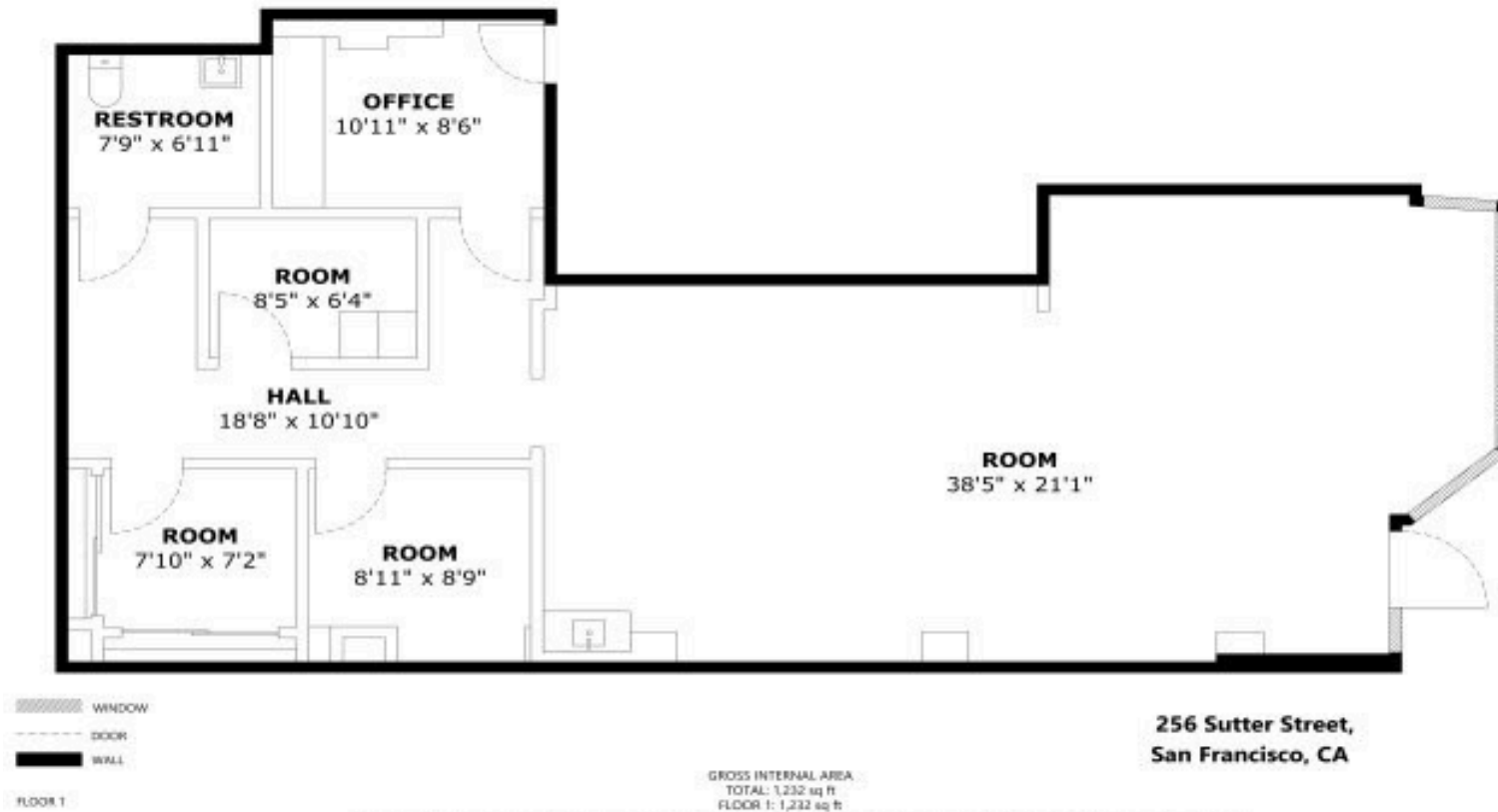
\$10,000 /Month

- All NNN
- Trash approx \$80-90
- PG&E varies from \$100-200 bc heat is electrical
- No charge for common area cleaning
- Water is split 2x per year.
- Retail is charged a portion of tax.





This information has been secured by Starboard CRE from sources believed to be reliable. It is not guaranteed and should be verified before closing any transaction.



All material presented herein is intended for informational purposes only. Information is compiled from sources deemed reliable but is subject to error, omissions, changes in price, conditions, sale, or withdrawal without notice. No statement is made as to accuracy of this description. All measurements and square footages are approximate. Exact dimensions can be obtained by retaining the services of an architect or engineer. This is not intended to solicit property already leased.



Chayanee Jantaradaval

Senior Leasing & Sales Associate

chayanee@starboardcre.com

CELL: 415.860.9546

DRE # 02160246

Call

View Profile



STARBOARD CRE
LOCAL • INDEPENDENT • ENTREPRENEURIAL

STARBOARDCRE.COM
OFC. PHONE 415.765.6900
49 POWELL STREET, SAN FRANCISCO, CA 94102



Unique Vision
We see what others miss

Local Market Leader
No one knows Northern
California like we do

Full-Service Firm
We do it all

Locally based, and technology-forward, our brokers are highly qualified experts backed by a full-service, in-house support team who understand the intricacies of San Francisco real estate. Starboard CRE brings decades of brokerage experience representing over 600 million square feet of space with an aggregate lease value of over 10 billion and investments sold over 3 billion.

CA DRE# 01103056

