



STARBOARD CRE
LOCAL • INDEPENDENT • ENTREPRENEURIAL

For Lease

256 SUTTER STREET

San Francisco, CA 94108

Creative offices near Financial
District/Union Square, close to BART

Chayanee Jantaradaval (Nim)
415.860.9546



STARBOARDCRE.COM
49 POWELL STREET, SAN FRANCISCO, CA 94102

Building: 256 Sutter Street, San Francisco.
Size: 1,750 RSF on each floor
Floor: 2 Floors
Type: Office
Term: Negotiable

Two floors are available for lease in San Francisco, near the Financial District and Union Square, close to BART.

Each floor offers 1,750 RSF with flexible lease terms, suitable for various uses such as a hair salon, creative office space, and professional services. All floors feature operable windows, high ceilings, and excellent natural light, emphasizing a versatile and attractive leasing opportunity.

3% Commission to procuring broker



Rentable SF: 1,750 RSF
Lease Type: Creative Office Space
Term: Flexible

Highlights

- Operable Windows
- High Ceiling
- Excellent Natural Light



5TH FLOOR IMAGES

For Lease



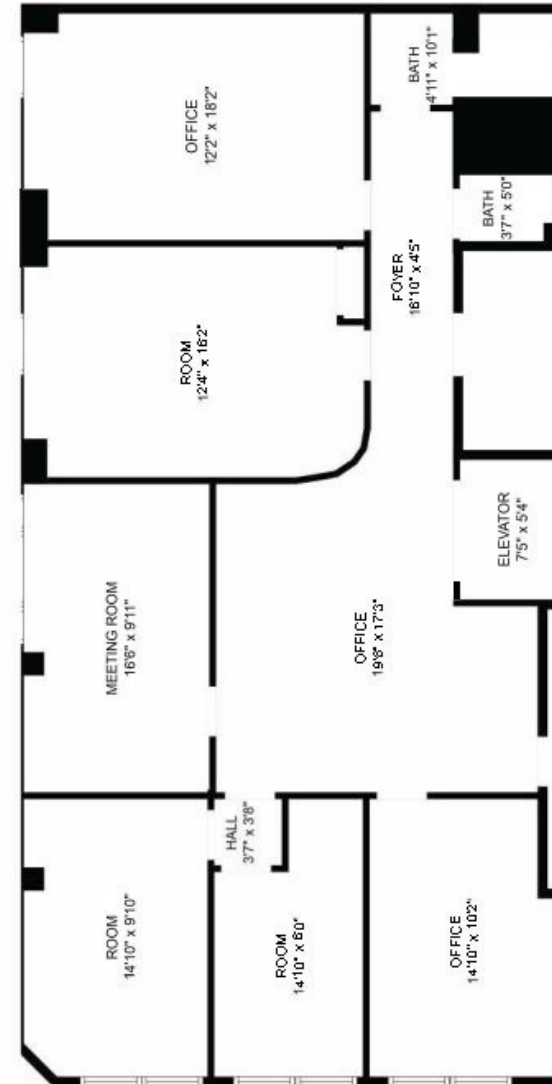
This information has been secured by Starboard CRE from sources believed to be reliable. It is not guaranteed and should be verified before closing any transaction.

STARBOARD CRE
LOCAL • INDEPENDENT • ENTREPRENEURIAL

Rentable SF: 1,750 RSF
Lease Type: Professional Services Space
Term: Flexible

Highlights

- Operable Windows
- High Ceiling
- Excellent Natural Light
- Previously a lawyers office



6TH FLOOR IMAGES

For Lease



This information has been secured by Starboard CRE from sources believed to be reliable. It is not guaranteed and should be verified before closing any transaction.



Chayanee Jantaradaval

Senior Leasing & Sales Associate

chayanee@starboardcre.com

CELL: 415.860.9546

DRE # 02160246

Call

View Profile



STARBOARD CRE
LOCAL • INDEPENDENT • ENTREPRENEURIAL

STARBOARDCRE.COM
OFC. PHONE 415.765.6900
49 POWELL STREET, SAN FRANCISCO, CA 94102



Unique Vision

We see what others miss

Local Market Leader

No one knows Northern
California like we do

Full-Service Firm

We do it all

Locally based, and technology-forward, our brokers are highly qualified experts backed by a full-service, in-house support team who understand the intricacies of San Francisco real estate. Starboard CRE brings decades of brokerage experience representing over 600 million square feet of space with an aggregate lease value of over 10 billion and investments sold over 3 billion.

CA DRE# 01103056

