

2



Shaw Alley St.

SAN FRANCISCO, CA 94105

FOR LEASE

Fully Furnished
Plug & Play Option

Craig Hansson

craig@starboardcre.com

415.710.7768

Jerry Adamson

jerry@groundmatrix.com

707.570.7802



GROUND MATRIX



2 Shaw Alley Street

San Francisco, CA 94105

Space: 2nd Floor

Square Ft: 5,303 RSF

Rate/Type: \$45, net of expenses (~\$8PSF)

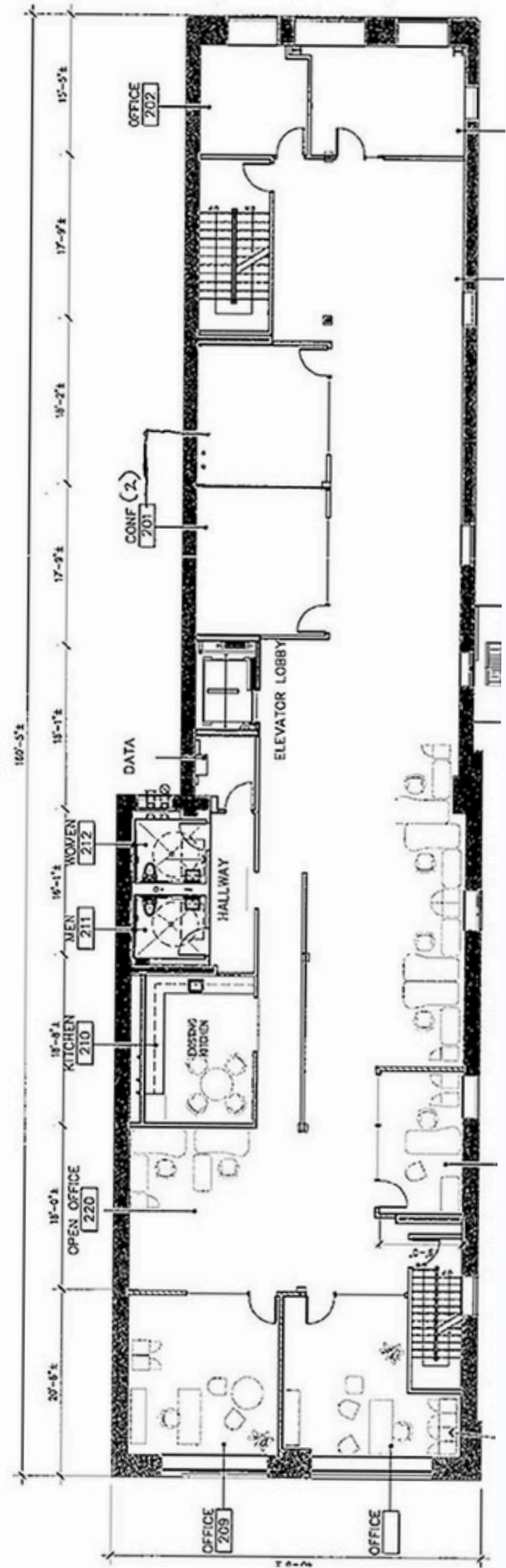
Term: through March 31, 2025

HIGHLIGHTS

- Exposed brick and timber interiors
- Creative space with flexible layout –room for 40+
- 7 conference rooms, enclosed break room
- Full HVAC and operable windows
- Full floor identity
- Three sides of natural light
- Server room
- 1 block to Montgomery Bart Station
- Directly adjacent to Salesforce Transit Park



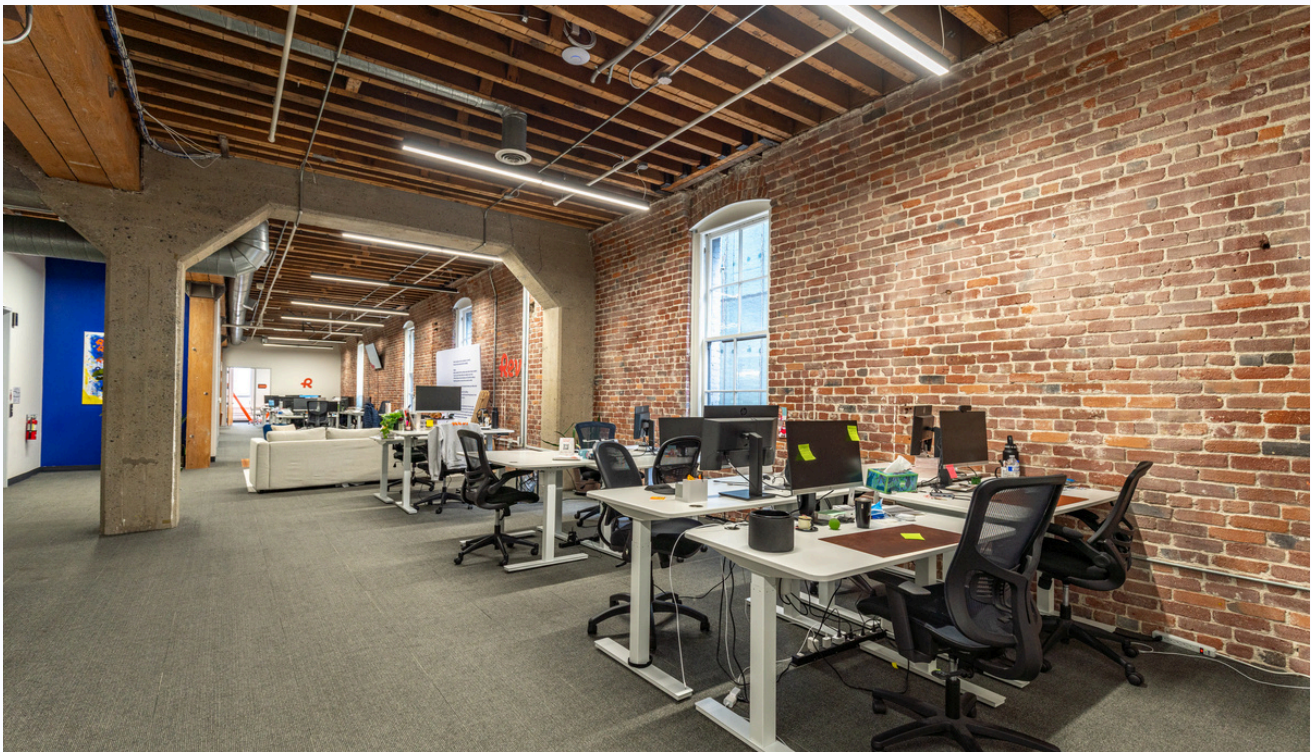
Floor Plan



Images



Images



Images



Images



Team



Craig Hansson

Vice President

craig@starboardcre.com

CELL: 415.710.7768

CA DRE # 01841643

[Call](#)

[View Profile](#)



Jerry Adamson

Advisor

jerry@groundmatrix.com

CELL: 707.570.7802

CA DRE: 01935945

[Call](#)

[View Profile](#)





STARBOARD CRE
LOCAL • INDEPENDENT • ENTREPRENEURIAL

STARBOARDCRE.COM
49 POWELL STREET, SAN FRANCISCO, CA 94102



Unique Vision

We see what others miss

Local Market Leader

No one knows Northern California like we do

Full-Service Firm

We do it all

Locally based, and technology-forward, our brokers are highly qualified experts backed by a full-service, in-house support team who understand the intricacies of San Francisco real estate. Starboard CRE brings decades of brokerage experience representing over 600 million square feet of space with an aggregate lease value of over 10 billion and investments sold over 3 billion.



CA DRE# 01103056