



# 1540 Pine Street

San Francisco, CA 94109

For Sublease

**Craig Hansson**  
craig@starboardcre.com  
415.710.7768

**Hans Hansson**  
Hans@starboardcre.com  
415.517.2589



**STARBOARD CRE**  
LOCAL • INDEPENDENT • ENTREPRENEURIAL

# 1540 Pine Street

San Francisco, CA 94109

**Square Ft.** ± 55,393 SF

**Parcel Area** ± 13,228 SF

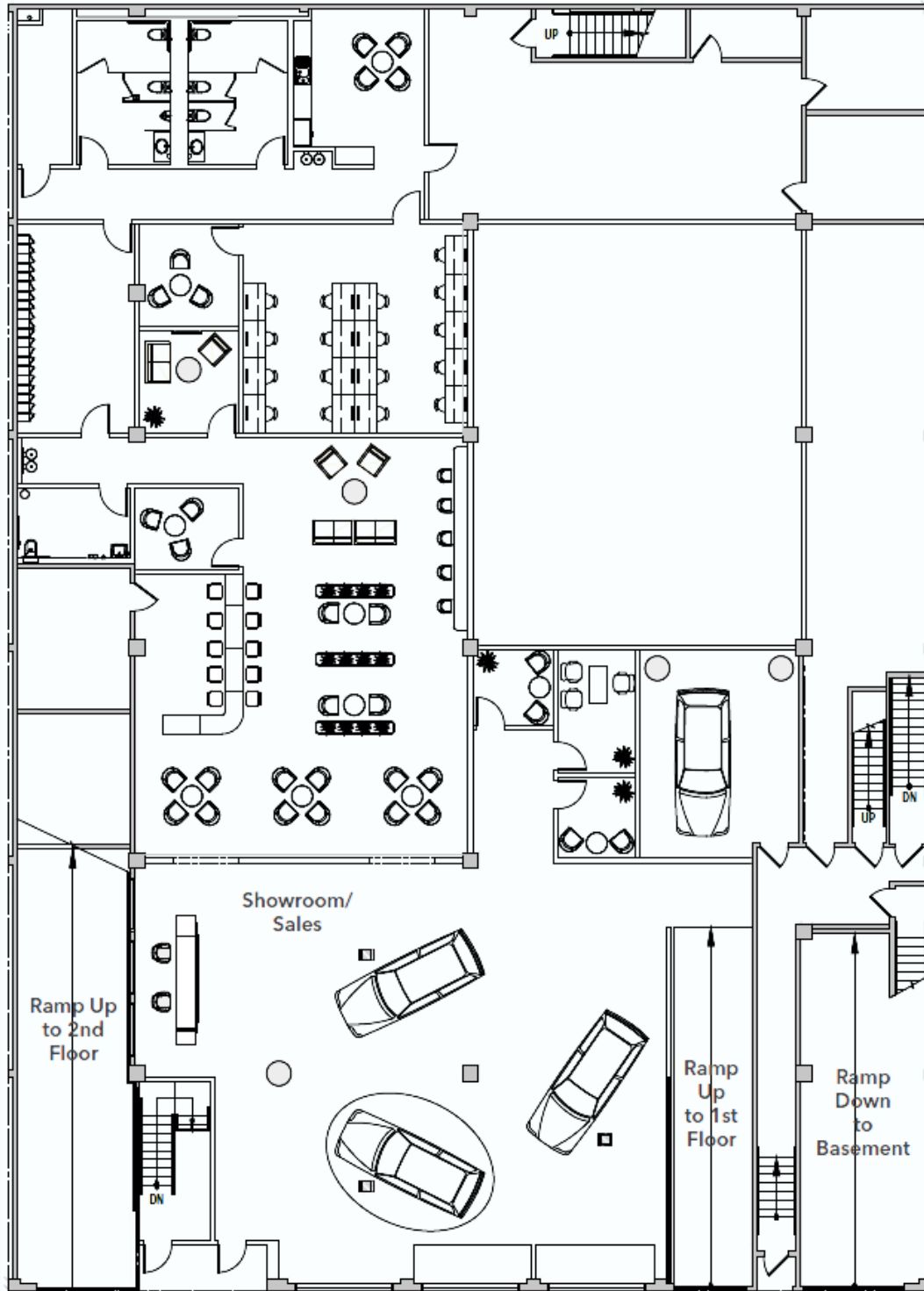
**Sublease** Through Nov 2028

## OVERVIEW

- Full Building Opportunity Zoned Automotive
- Easily Accessible Location
- Rare Rooftop Parking



# FLOORPLAN FIRST FLOOR

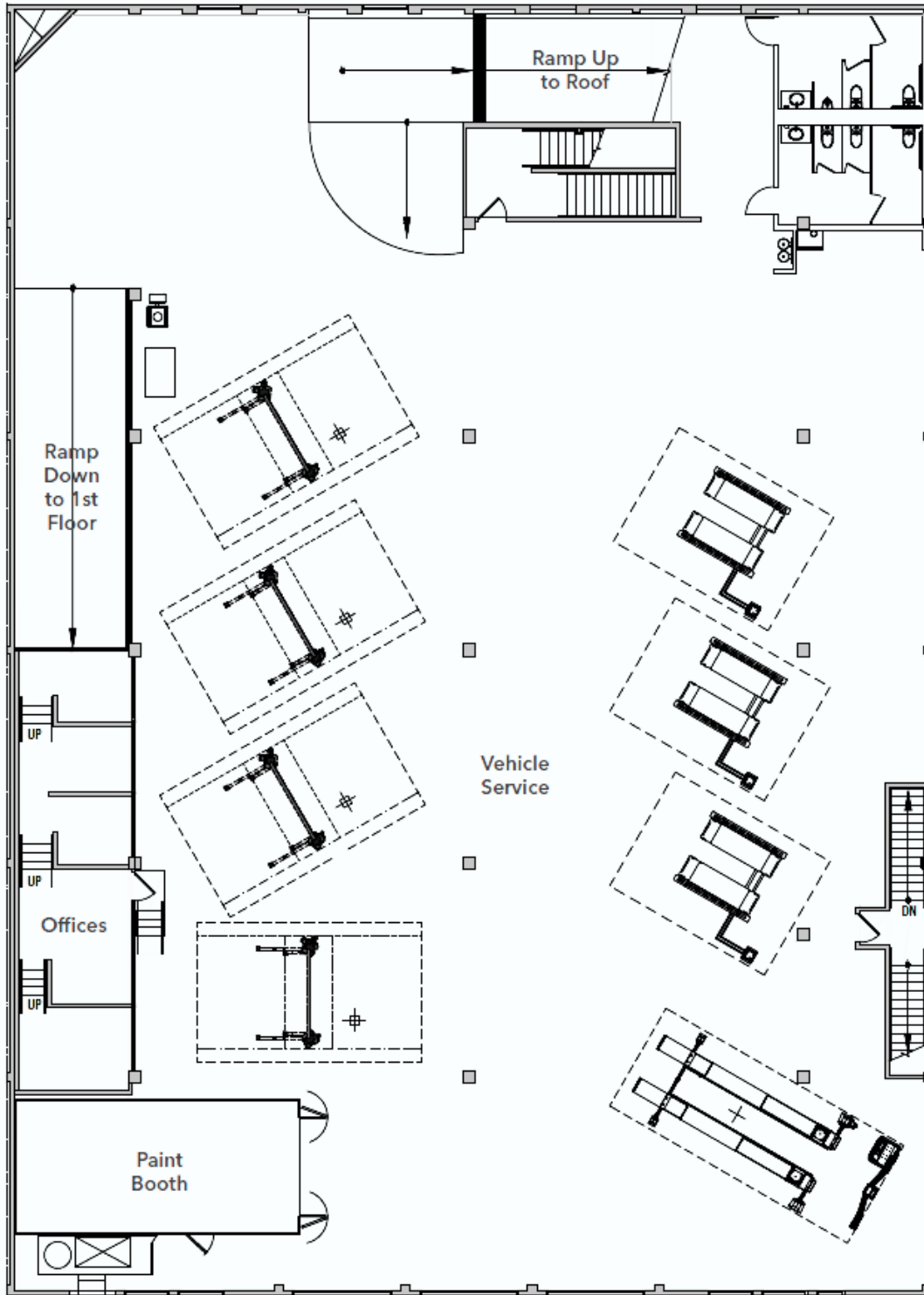


# IMAGES FIRST FLOOR

---



# FLOORPLAN SECOND FLOOR

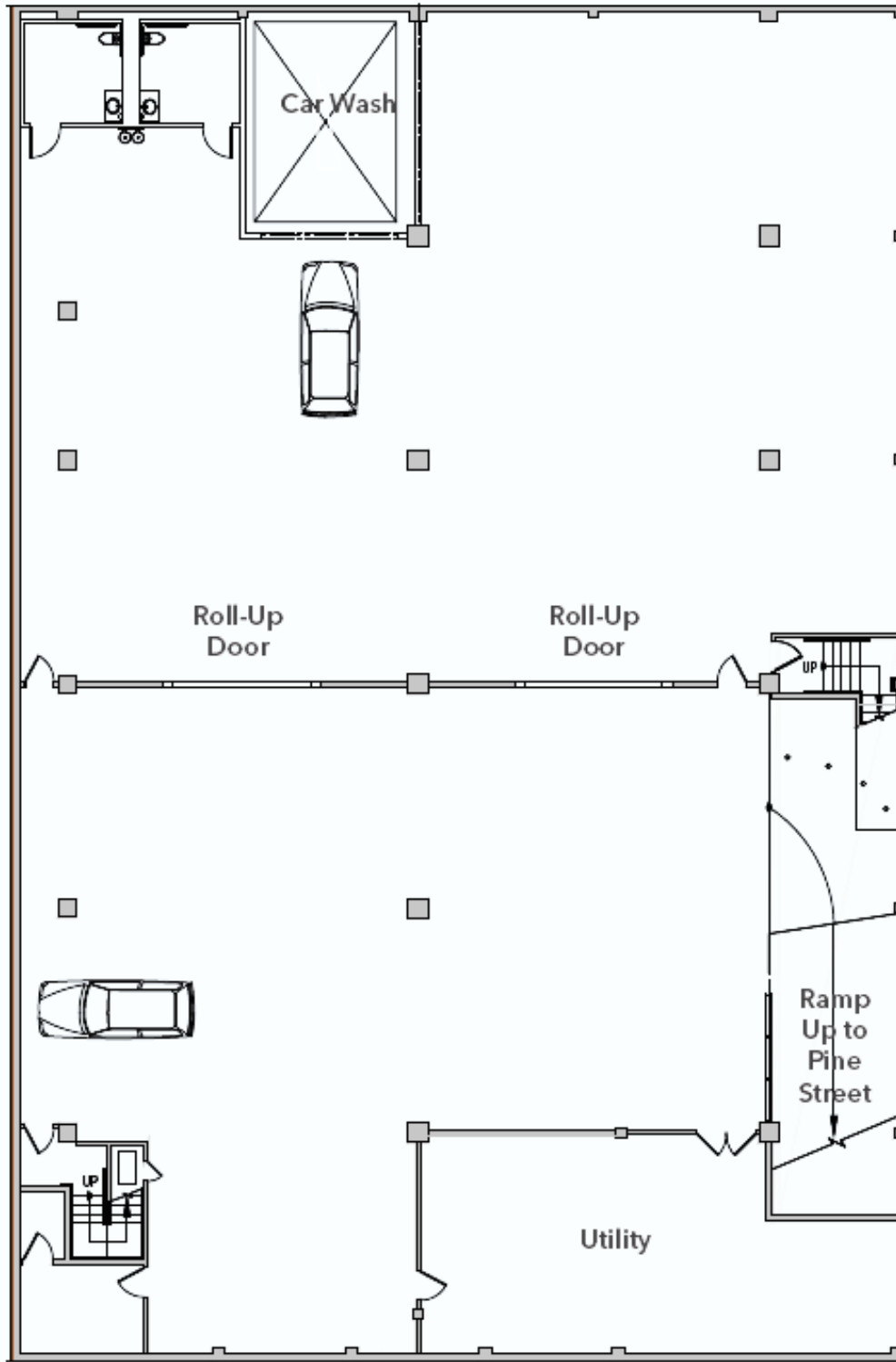


# IMAGES SECOND FLOOR

---

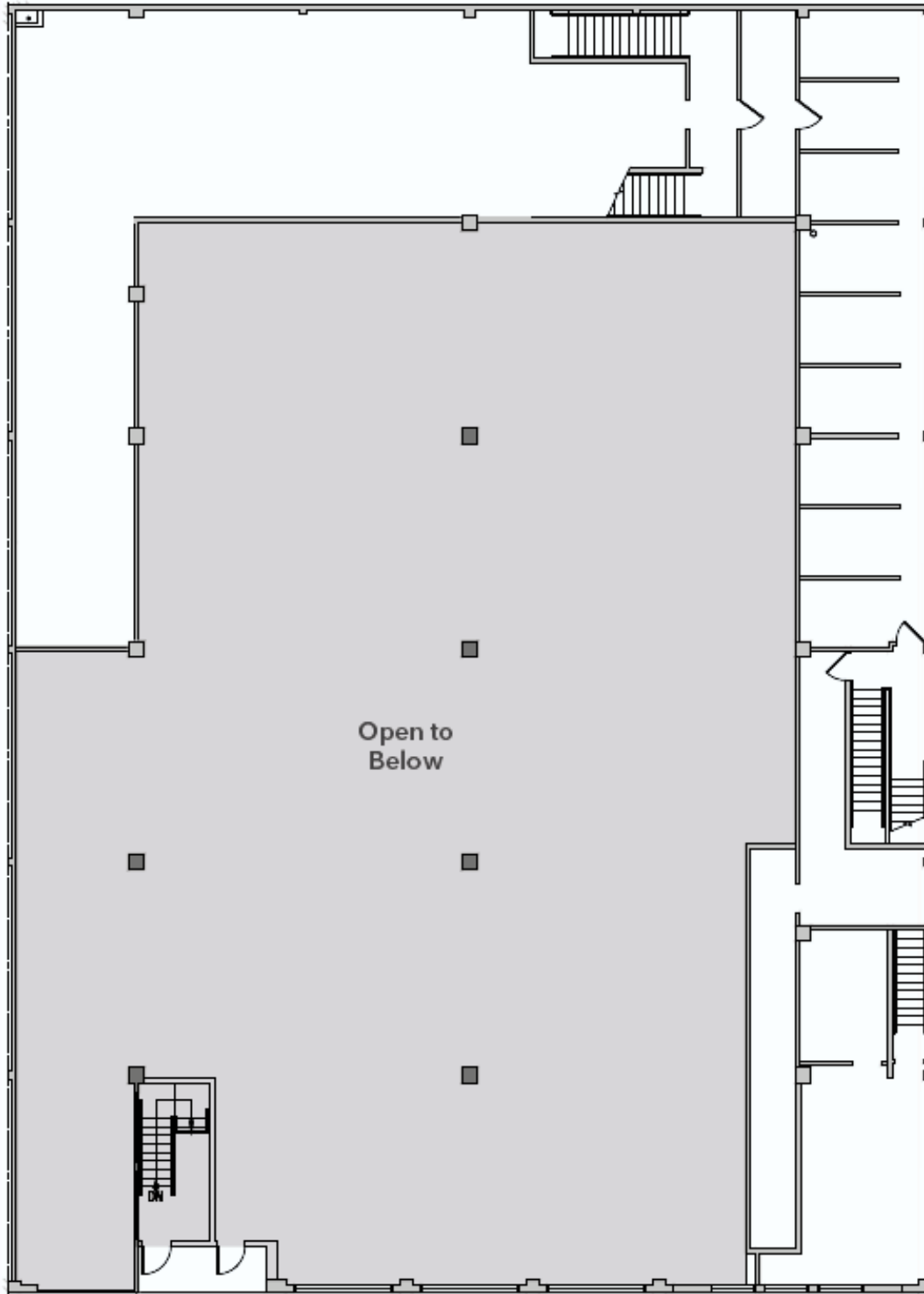


# FLOORPLAN BASEMENT



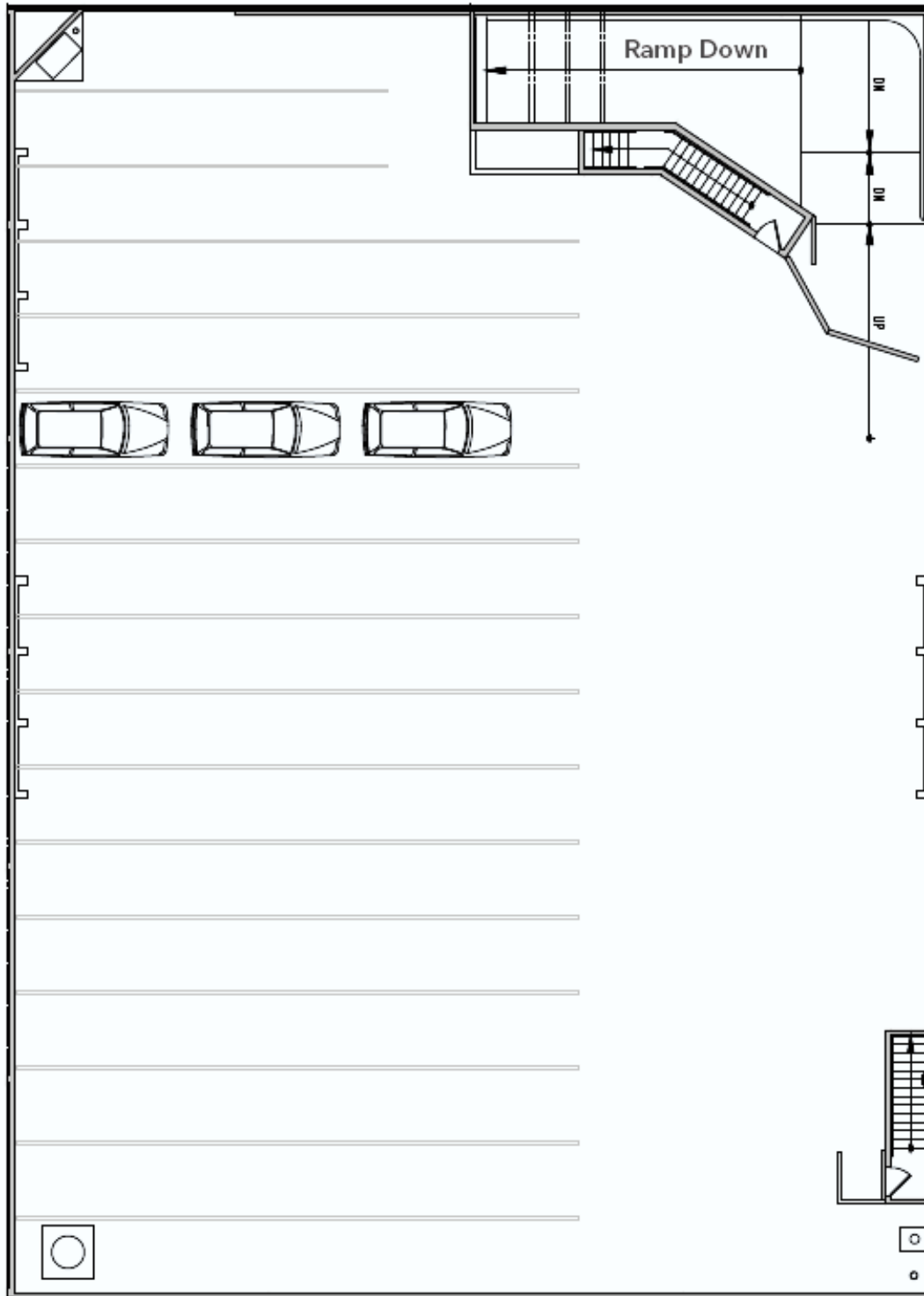
# FLOORPLAN MEZZANINE

---





# FLOORPLAN ROOF



# IMAGES ROOF

---



# AGENT

---



## Hans Hansson

President / Broker of Record  
hans@starboardcre.com  
CELL: 415.517.2589  
CA DRE # 00872902

Call

View Profile



## Craig Hansson

Vice President  
craig@starboardcre.com  
CELL: 415.710.7768  
CA DRE # 01841643

Call

View Profile





**STARBOARD CRE**  
LOCAL • INDEPENDENT • ENTREPRENEURIAL

STARBOARDCRE.COM  
49 POWELL STREET, SAN FRANCISCO, CA 94102



### Unique Vision

We see what others miss

### Local Market Leader

No one knows Northern  
California like we do

### Full-Service Firm

We do it all

Locally based, and technology-forward, our brokers are highly qualified experts backed by a full-service, in-house support team who understand the intricacies of San Francisco real estate. Starboard CRE brings decades of brokerage experience representing over 600 million square feet of space with an aggregate lease value of over 10 billion and investments sold over 3 billion.



**CA DRE# 01103056**