



STARBOARD CRE
LOCAL • INDEPENDENT • ENTREPRENEURIAL

For Lease

244 Kearny Street

San Francisco, CA 94108

Flexible Office Space
Prime Location with Amenities

MARK MEIER
415-299-7042

CRAIG HANSSON
415-710-7768

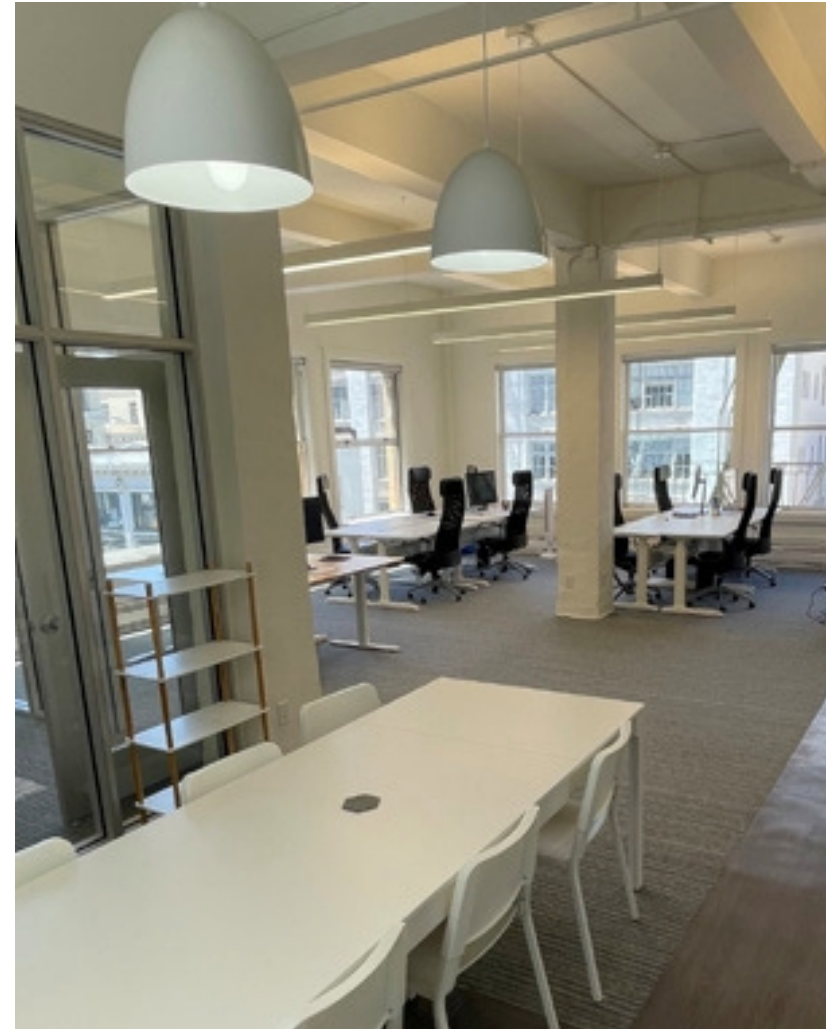


STARBOARDCRE.COM
49 POWELL STREET, SAN FRANCISCO, CA 94102

Building: 244 KEARNY STREET, San Francisco.
Size: ± 1,350 SF
Floor: 5th Floor
Zoning: C-3-O - Downtown - Office

244 Kearny Street is a boutique office building located next to the corner of Kearny and Bush Street. Within walking distance to Montgomery BART and several great cafes and restaurants including Mixt, Rickhouse, Starbucks and Sam's Grill.

This building offers great natural light, operable windows, flexible lease terms, light foot traffic, a 2nd-floor break room, and a 3rd floor conference room.



Rentable Square Feet: +/-1,350
Price: Negotiable
Lease Type: Full Service
Term: Negotiable

Highlights

- Entire 5th floor
- Efficient open floor plan
- Great natural light
- One conference room
- Fully furnished
- Kitchenette
- Operable windows
- Private restroom
- Stair and elevator access (light foot traffic)



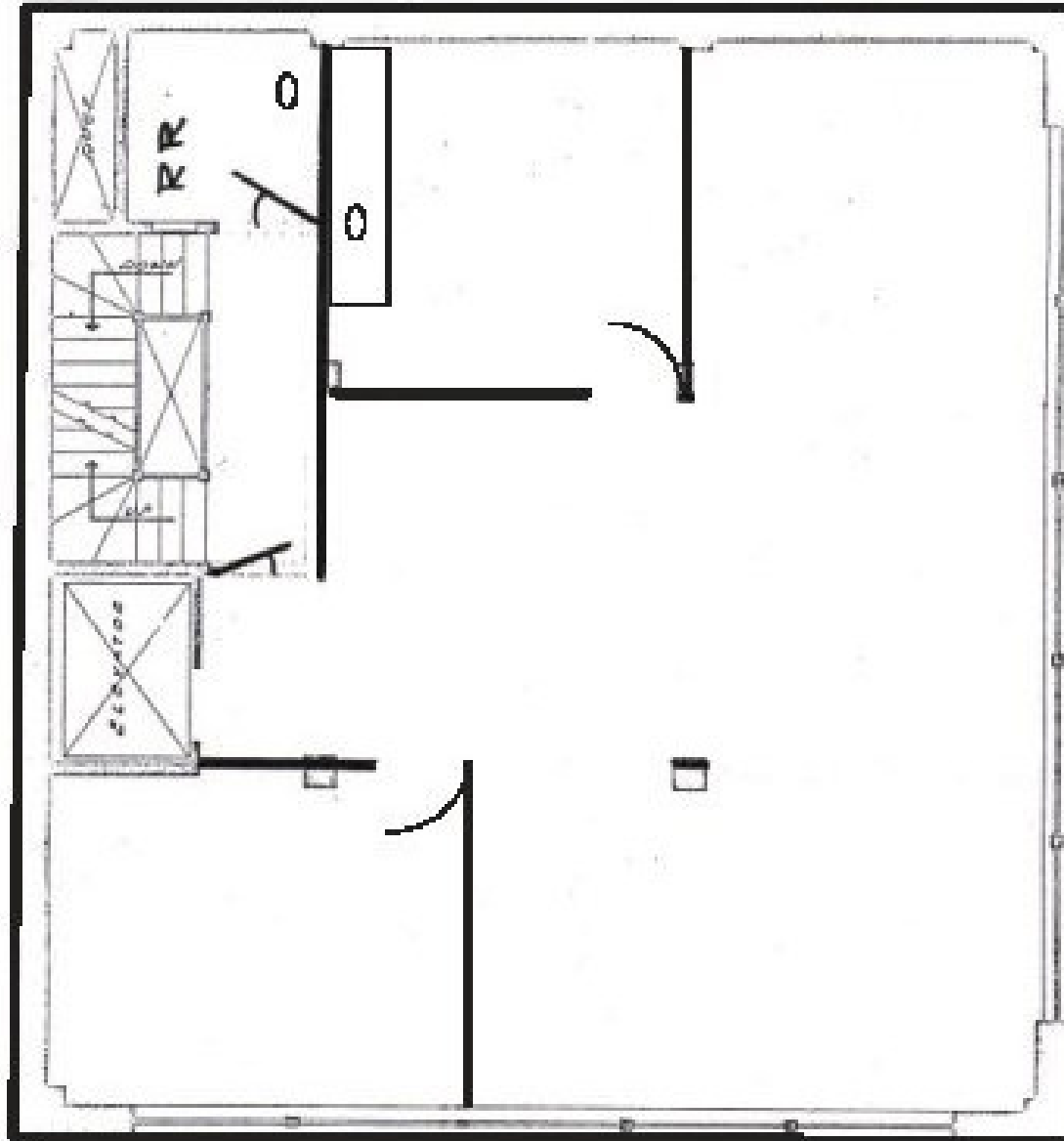
5TH FLOOR PHOTOS

For Lease



This information has been secured by Starboard CRE from sources believed to be reliable. It is not guaranteed and should be verified before closing any transaction.

5TH FLOOR



AMENITIES

For Lease



This information has been secured by Starboard CRE from sources believed to be reliable. It is not guaranteed and should be verified before closing any transaction.



CRAIG HANSSON

Vice President
craig@starboardcre.com
CELL: 415-710-7768
CA DRE # 01841643

Call

View Profile



MARK MEIER

Lease and Sales Senior Associate
mark@starboardcre.com
CELL: 415-299-7042
CA DRE # 02047169

Call

View Profile



STARBOARD CRE
LOCAL • INDEPENDENT • ENTREPRENEURIAL

STARBOARDCRE.COM
OFC. PHONE 415.765.6900
49 POWELL STREET, SAN FRANCISCO, CA 94102



Unique Vision

We see what others miss

Local Market Leader

No one knows Northern
California like we do

Full-Service Firm

We do it all

Locally based, and technology-forward, our brokers are highly qualified experts backed by a full-service, in-house support team who understand the intricacies of San Francisco real estate. Starboard CRE brings decades of brokerage experience representing over 600 million square feet of space with an aggregate lease value of over 10 billion and investments sold over 3 billion.

CA DRE# 01103056

