



# 1112

## Bryant Street

San Francisco, CA 94103

For Sale

**Mark Meier**

[mark@starboardcre.com](mailto:mark@starboardcre.com)

415.299.7042

**Craig Hansson**

[craig@starboardcre.com](mailto:craig@starboardcre.com)

415.710.7768



**STARBOARD CRE**  
LOCAL • INDEPENDENT • ENTREPRENEURIAL

# 1112 Bryant Street

San Francisco, CA 94103

**Size:** 5068 SF

**Floors:** 3 Floors

## OVERVIEW

1112 Bryant is a Prime 3 story South of Market Building with true office designation. 5068 square feet of total space. The property offers three separate well-finished spaces with functional layouts along with two deeded parking spots off the back of the building.

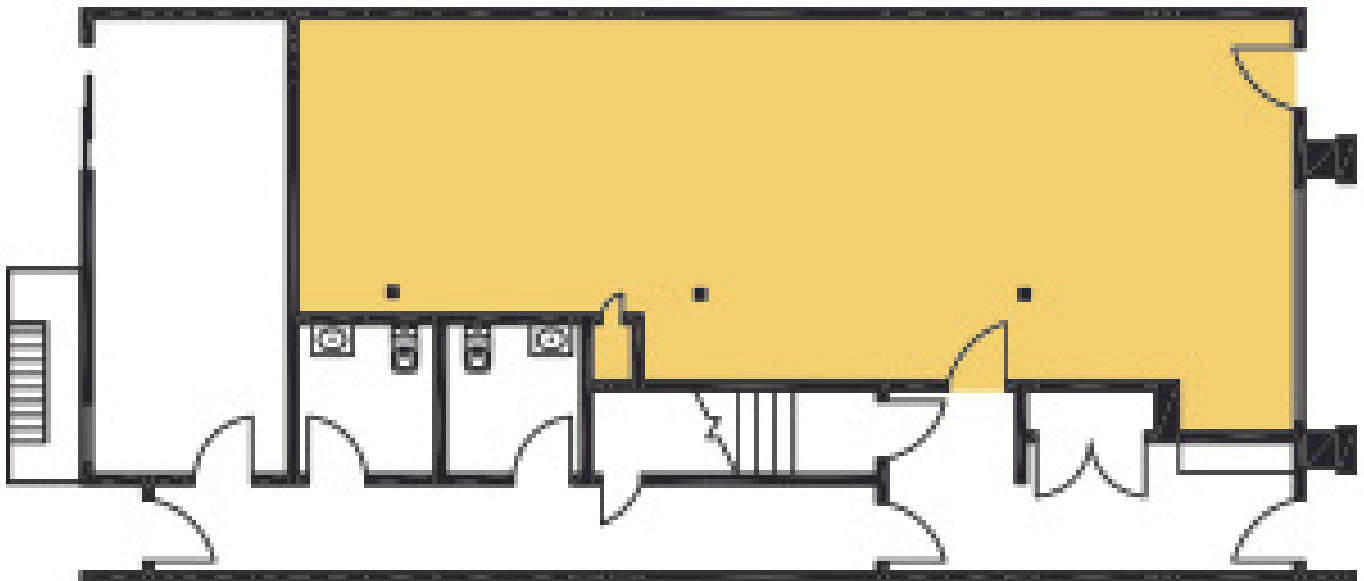


# FIRST FLOOR

---

## HIGHLIGHTS

- Nicely finished ground-floor suite
- Open layout
- Great natural light



# FIRST FLOOR - IMAGES

---

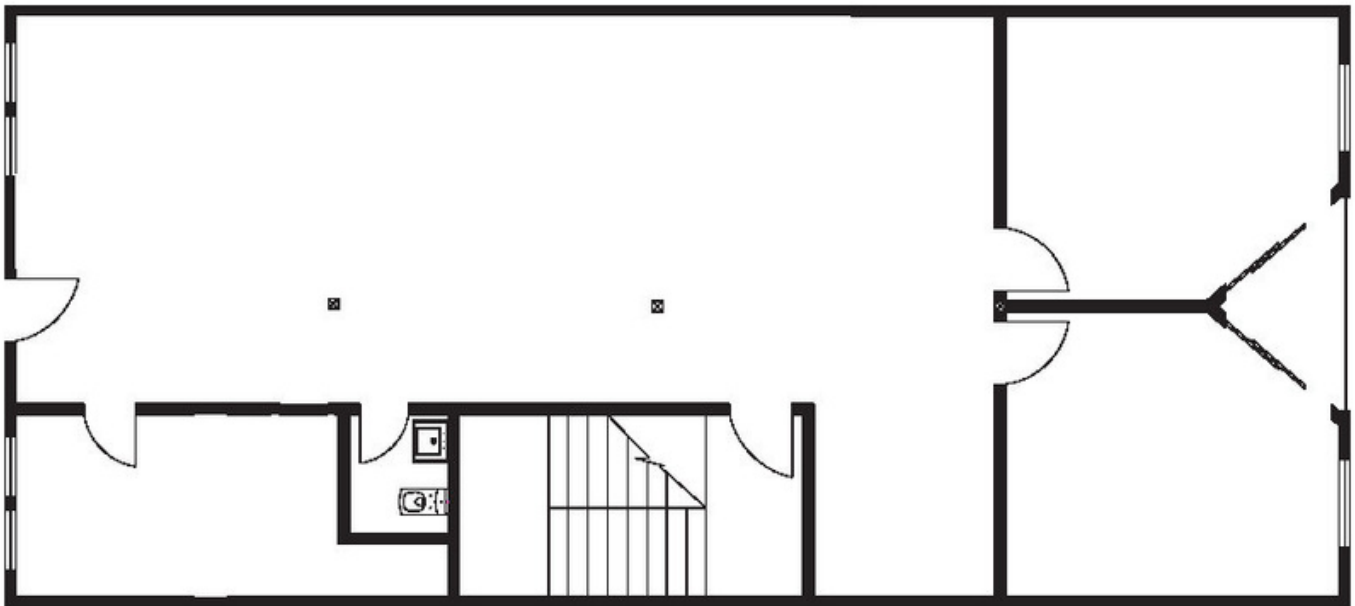


# SECOND FLOOR

---

## HIGHLIGHTS

- Open layout
- Great Natural light
- Two private offices with outside decks
- One Restroom
- Kitchenette



# THIRD FLOOR

---

## HIGHLIGHTS

- New spec suite
- Two private offices with outside decks
- New modern kitchen with Dishwasher and Refrigerator
- Great natural light
- Fully wired
- One restroom



# THIRD FLOOR - IMAGES

---



# THIRD FLOOR - IMAGES

---





# EXTERIOR IMAGES

---



# AERIAL IMAGES

---



# AGENT

---



## Mark Meier

Senior Leasing & Sales Associate  
mark@starboardcre.com  
CELL: 415.299.7042  
DRE # 02047169

Call

View Profile



## Craig Hansson

Vice President  
craig@starboardcre.com  
CELL: 415.710.7768  
CA DRE # 01841643

Call

View Profile



**STARBOARD CRE**  
LOCAL • INDEPENDENT • ENTREPRENEURIAL

STARBOARDCRE.COM  
49 POWELL STREET, SAN FRANCISCO, CA 94102



### Unique Vision

We see what others miss

### Local Market Leader

No one knows Northern  
California like we do

### Full-Service Firm

We do it all

Locally based, and technology-forward, our brokers are highly qualified experts backed by a full-service, in-house support team who understand the intricacies of San Francisco real estate. Starboard CRE brings decades of brokerage experience representing over 600 million square feet of space with an aggregate lease value of over 10 billion and investments sold over 3 billion.



**CA DRE# 01103056**