



STARBOARD CRE
LOCAL • INDEPENDENT • ENTREPRENEURIAL

For Lease

257 OAK STREET

San Francisco, CA 94102

Rare Hayes Valley Office Space

Hans Hansson
4155172589

Craig Hansson
4157107768

[View Online](#)



STARBOARDCRE.COM
49 POWELL STREET, SAN FRANCISCO, CA 94102

Available Suite: Ground floor

Size: 1,740 SF

Rate: \$42.00 PSF/ IG

Highlights

BEAUTIFUL Victorian building located on Oak Street between Octavia and Gough

RARE Hayes Valley building with permitted ground floor office space that is move-in ready

FEATURES multiple offices, a reception area, conference room, small kitchen, and bathroom

BOASTS ample windows providing great natural light, including a private outdoor garden

CLOSE proximity to Golden Gate Park, Ocean Beach, and 19th Avenue, one of the City's main thoroughfares

LOCATED in an affluent residential neighborhood between Hayes Valley and Civic Center (Market Street)

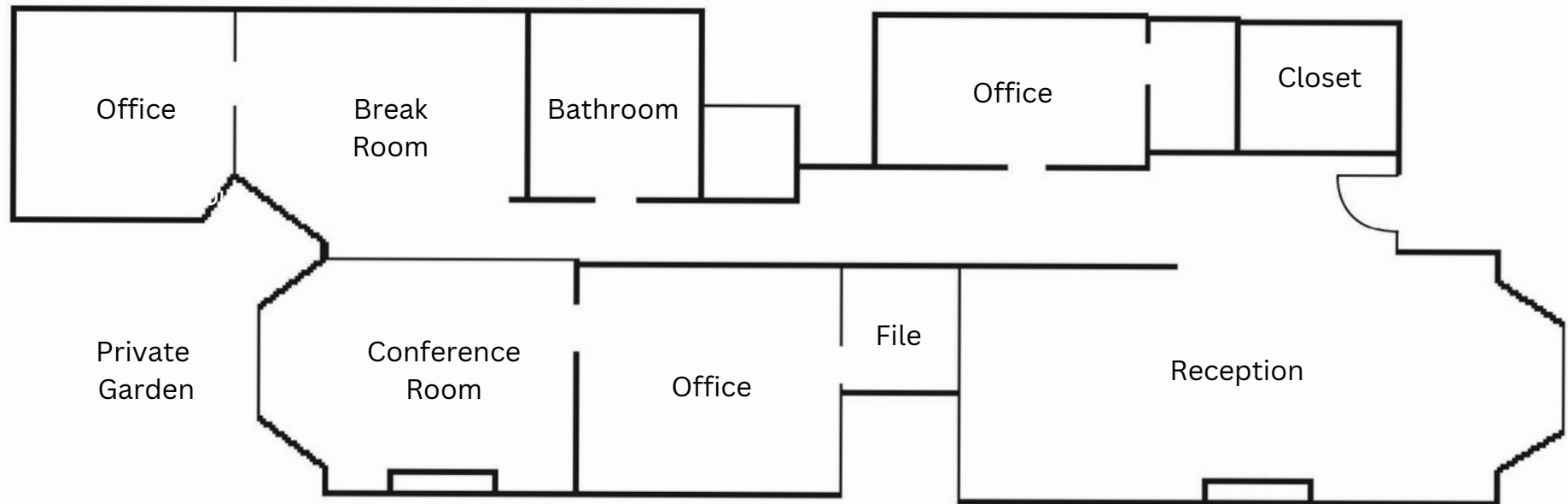
UPPER floor can also be made available for office; currently a work-live studio



This information has been secured by Starboard CRE from sources believed to be reliable. It is not guaranteed and should be verified before closing any transaction.



This information has been secured by Starboard CRE from sources believed to be reliable. It is not guaranteed and should be verified before closing any transaction.





Hans Hansson

President / Broker of Record
hans@starboardcre.com
CELL: 415.517.2589
CA DRE # 00872902

Call

View Profile



Craig Hansson

Vice President
craig@starboardcre.com
CELL: 415.710.7768
CA DRE #01841643

Call

View Profile



STARBOARD CRE
LOCAL • INDEPENDENT • ENTREPRENEURIAL

STARBOARDCRE.COM
OFC. PHONE 415.765.6900
49 POWELL STREET, SAN FRANCISCO, CA 94102



Unique Vision

We see what others miss

Local Market Leader

No one knows Northern
California like we do

Full-Service Firm

We do it all

Locally based, and technology-forward, our brokers are highly qualified experts backed by a full-service, in-house support team who understand the intricacies of San Francisco real estate. Starboard CRE brings decades of brokerage experience representing over 600 million square feet of space with an aggregate lease value of over 10 billion and investments sold over 3 billion.

CA DRE# 01103056

TCN
WORLDWIDE
REAL ESTATE SERVICES

AREA
ASSOCIATED REALTY OF THE AMERICAS