



**STARBOARD CRE**  
LOCAL • INDEPENDENT • ENTREPRENEURIAL

For Lease

**605 Market Street**

San Francisco, CA 94105

premier office building located right in  
the heart of the South Financial District.

**Hans Hansson**  
415.517.2589

**Craig Hansson**  
415.710.7768

**Mark Meier**  
415.299.7042

[View Online](#)



STARBOARDCRE.COM  
49 POWELL STREET, SAN FRANCISCO, CA 94102

# BUILDING OVERVIEW

For Lease

**Building:** 605 Market St, San Francisco.  
**Space:** 16 Spaces Available  
**Listing Price Range:** From \$36.00 PSF - Fully Serviced  
**Type:** Office  
**Term:** Negotiable

605 Market Street is premier office building located right in the heart of the South Financial District. South FiDi is a major financial hub home to several prominent financial institutions along with major banks, law firms and technology companies. There are endless amenities including several cafes, restaurants, and bars within walking distance. The building is well connected by public transportation with Montgomery BART a half block away. 605 Market Street offers full and partial floors with flexible lease terms and sweeping view of downtown San Francisco



This information has been secured by Starboard CRE from sources believed to be reliable. It is not guaranteed and should be verified before closing any transaction.

**STARBOARD CRE**  
LOCAL • INDEPENDENT • ENTREPRENEURIAL

## Suite 1400

- 4,628 SQFT
- Full floor
- Penthouse suite with an exclusive outside deck overlooking 2nd Street
- Multiple sides of natural lights
- Open Area
- 13 Private Offices
- Kitchenette

3D Virtual Tour



# 14TH FLOOR-IMAGES

For Lease



This information has been secured by Starboard CRE from sources believed to be reliable. It is not guaranteed and should be verified before closing any transaction.

**STARBOARD CRE**  
LOCAL • INDEPENDENT • ENTREPRENEURIAL

## Suite 1310/1350

- 2,732 SQFT
- Open layout with great natural light
- Two private offices
- Two kitchenettes

3D Virtual Tour



# 13TH FLOOR-IMAGES

For Lease



This information has been secured by Starboard CRE from sources believed to be reliable. It is not guaranteed and should be verified before closing any transaction.

**STARBOARD CRE**  
LOCAL • INDEPENDENT • ENTREPRENEURIAL

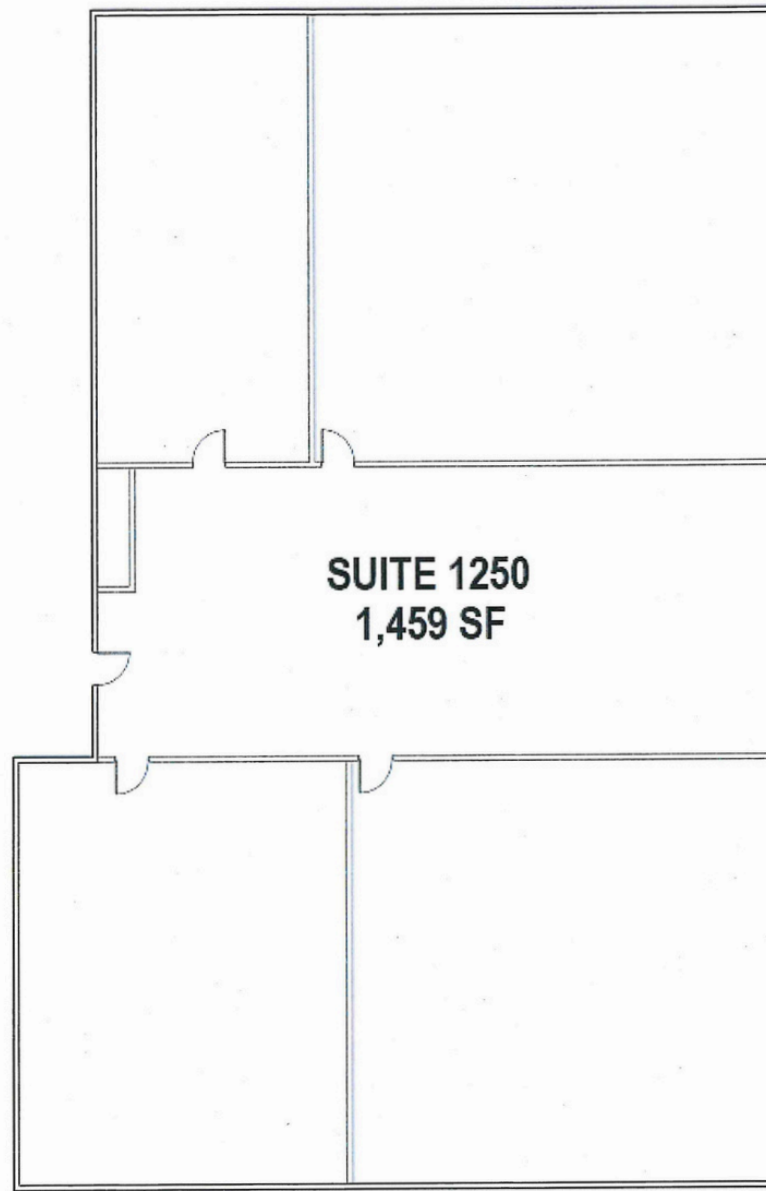
## Suite 1250

- 1,459 SQFT
- Open layout
- Four private offices



# 12TH FLOOR-OVERVIEW

For Lease



This information has been secured by Starboard CRE from sources believed to be reliable. It is not guaranteed and should be verified before closing any transaction.

**STARBOARD CRE**  
LOCAL • INDEPENDENT • ENTREPRENEURIAL



## Suite 1000

- 3,685 SQFT
- Full floor
- Open area
- Great natural light
- Twelve private offices around the perimeter
- Two private restrooms

3D Virtual Tour



# 10TH FLOOR-IMAGES

For Lease



This information has been secured by Starboard CRE from sources believed to be reliable. It is not guaranteed and should be verified before closing any transaction.

**STARBOARD CRE**  
LOCAL • INDEPENDENT • ENTREPRENEURIAL

## Suite 900

- 3,693 SQFT
- Full floor
- Open area
- Nine private offices
- Two restrooms
- Kitchenette
- Great natural lights

3D Virtual Tour



# 9TH FLOOR-IMAGES

For Lease

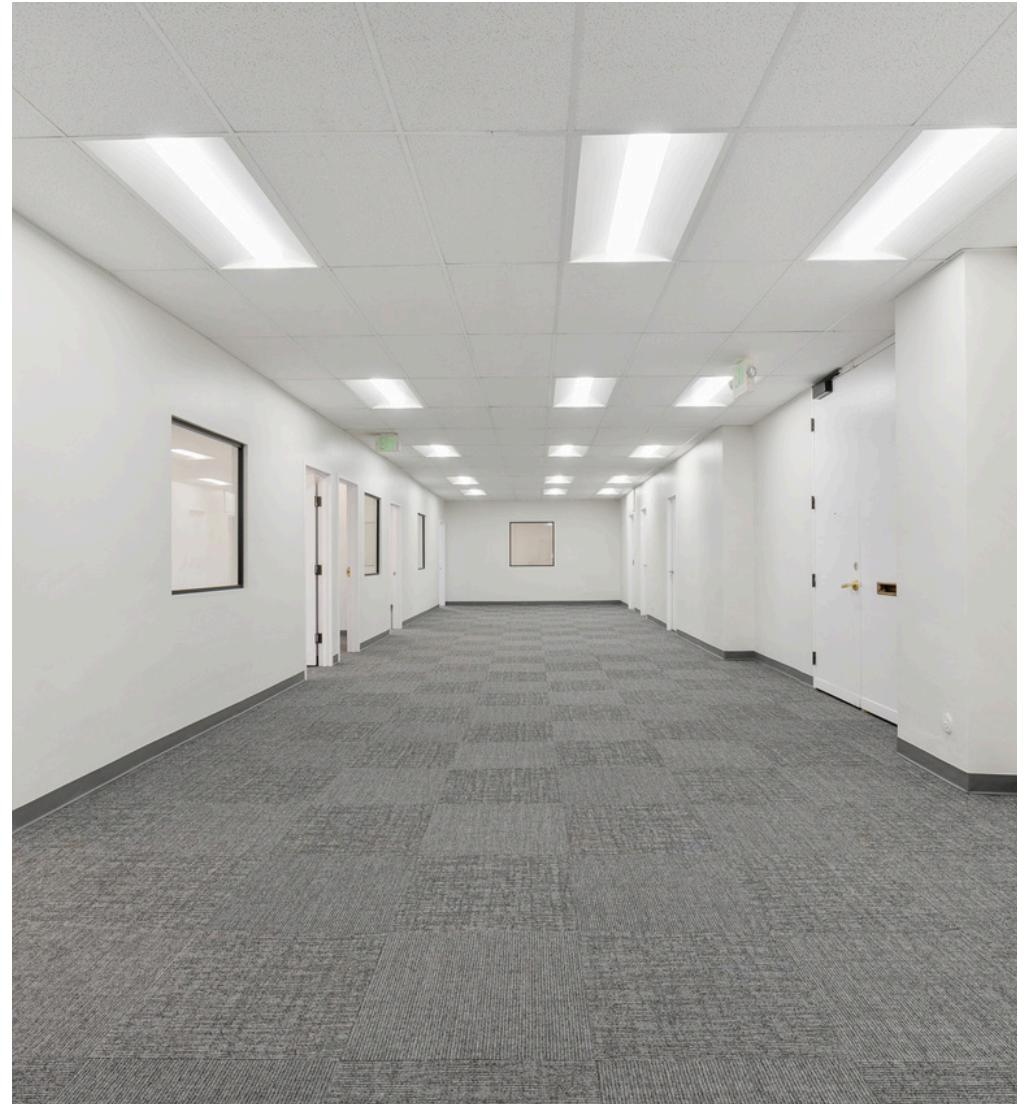


This information has been secured by Starboard CRE from sources believed to be reliable. It is not guaranteed and should be verified before closing any transaction.

## Suite 800

- 3,716 SQFT
- Full floor
- Recently completed spec suite
- Open layout
- Nine private offices
- One Kitchenette
- Two restrooms

3D Virtual Tour



# 8TH FLOOR-IMAGES

For Lease



This information has been secured by Starboard CRE from sources believed to be reliable. It is not guaranteed and should be verified before closing any transaction.

### Suite 500

- 1,489 SQFT
- Recently completed spec suite
- Open layout
- Two private rooms
- One kitchenette

### Suite 503

- 582 SQFT
- Recently renovated
- Open area
- One private office
- Kitchenette

### Suite 505

- 875 SQFT
- Open area
- Four private offices
- One Conference room
- **Available 3/1/2024**

### Suite 507

- 578 SQFT
- Recently renovated
- Open area
- One private office

### Suite 509

- 276 SQFT
- Recently renovated
- Reception area
- One private office



# 5TH FLOOR-IMAGES

For Lease



This information has been secured by Starboard CRE from sources believed to be reliable. It is not guaranteed and should be verified before closing any transaction.

**STARBOARD CRE**  
LOCAL • INDEPENDENT • ENTREPRENEURIAL



Suites 410/411 are offered exclusively as a combined space, with the potential for a single tenant to encompass Suites 400, 408, and 409.

## **Suite 400**

- 595 SQFT
- Two private rooms

## **Suite 408**

- 367 SQFT
- Open layout

## **Suite 409**

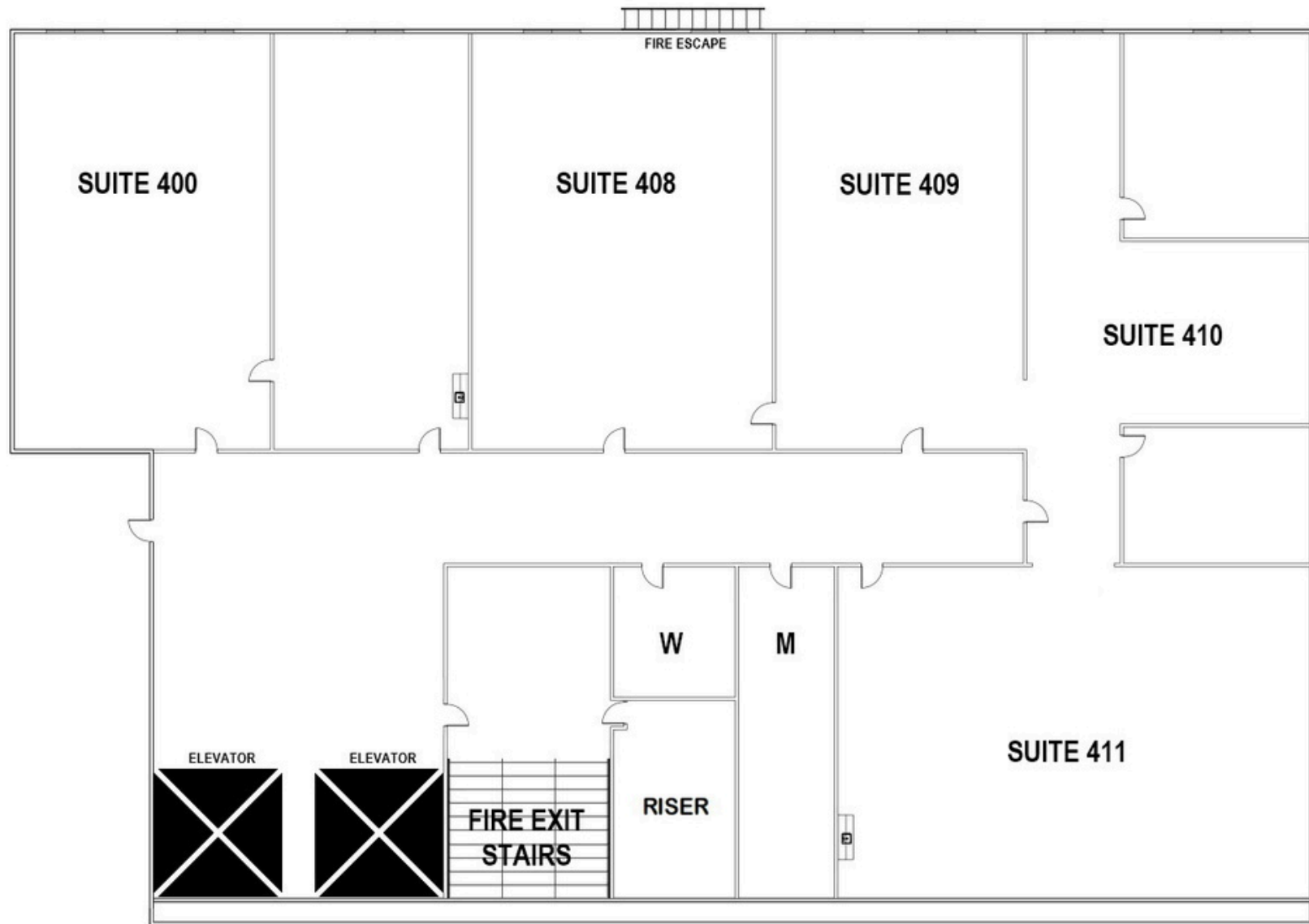
- 363 SQFT
- Open layout

## **Suite 410 and Suite 411**

- 957 SQFT
- One reception area
- Two private offices

# 4TH FLOOR

For Lease



This information has been secured by Starboard CRE from sources believed to be reliable. It is not guaranteed and should be verified before closing any transaction.

# AERIAL VIEW

For Lease



This information has been secured by Starboard CRE from sources believed to be reliable. It is not guaranteed and should be verified before closing any transaction.

**STARBOARD CRE**  
LOCAL • INDEPENDENT • ENTREPRENEURIAL



## Hans Hansson

President / Broker of Record  
hans@starboardcre.com  
CELL: 415.517.2589  
CA DRE # 00872902

Call

View Profile



## Craig Hansson

Vice President  
craig@starboardcre.com  
CELL: 415.710.7768  
CA DRE #01841643

Call

View Profile



## Mark Meier

Senior Leasing & Sales Associate  
mark@starboardcre.com  
CELL: 415.299.7042  
BRE # 02047169

Call

View Profile



**STARBOARD CRE**  
LOCAL • INDEPENDENT • ENTREPRENEURIAL

STARBOARDCRE.COM  
OFC. PHONE 415.765.6900  
49 POWELL STREET, SAN FRANCISCO, CA 94102



## Unique Vision

We see what others miss

## Local Market Leader

No one knows Northern  
California like we do

## Full-Service Firm

We do it all

Locally based, and technology-forward, our brokers are highly qualified experts backed by a full-service, in-house support team who understand the intricacies of San Francisco real estate. Starboard CRE brings decades of brokerage experience representing over 600 million square feet of space with an aggregate lease value of over 10 billion and investments sold over 3 billion.

**CA DRE# 01103056**

**TCN**  
WORLDWIDE  
REAL ESTATE SERVICES

**AREA**  
ASSOCIATED REALTY OF THE AMERICAS