



STARBOARD CRE
LOCAL • INDEPENDENT • ENTREPRENEURIAL

For Lease

605 Market Street

San Francisco, CA 94105

605 Market St. Special Offer!
Sign Your Lease by January 31st and Enjoy
45 Days of Free Rent Each Year!

Hans Hansson
415.517.2589

Craig Hansson
415.710.7768

Mark Meier
415.299.7042



STARBOARDCRE.COM
49 POWELL STREET, SAN FRANCISCO, CA 94102

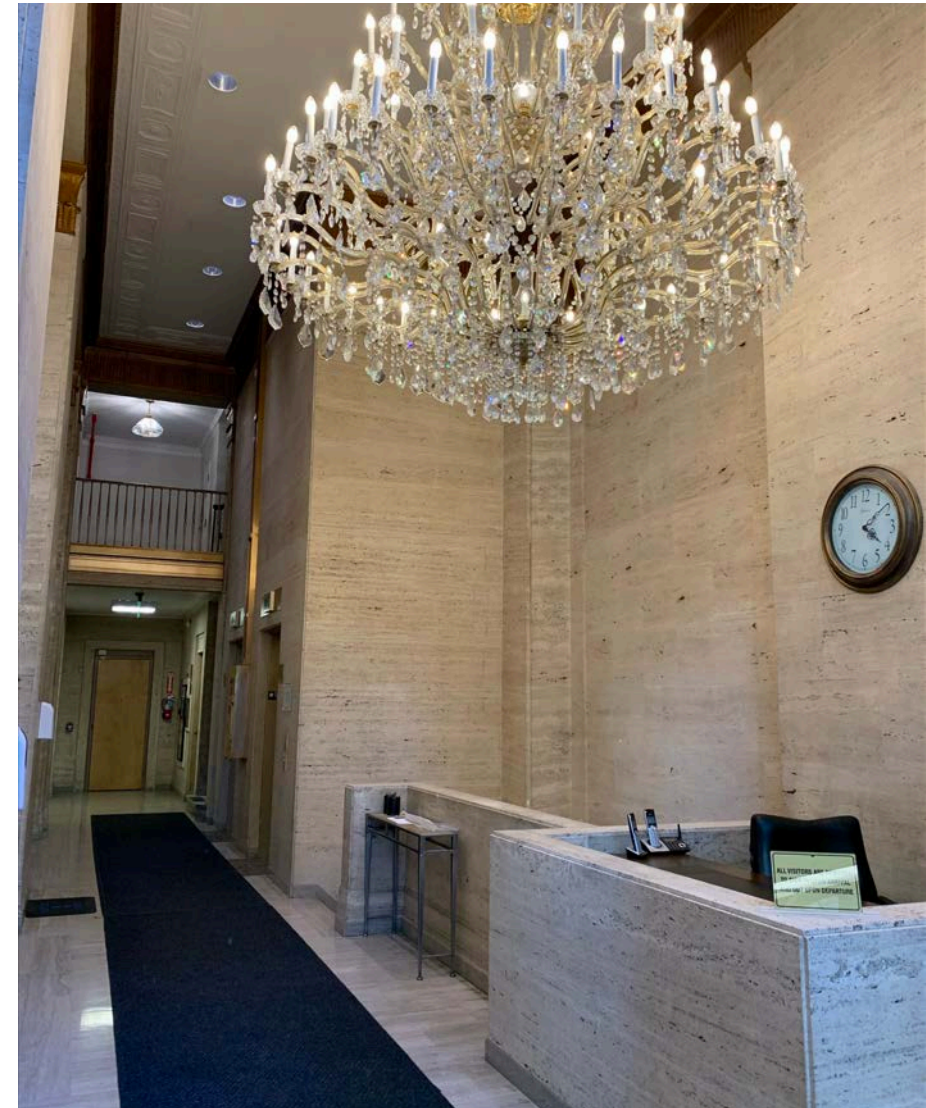
BUILDING OVERVIEW

For Lease

Building: 605 Market St, San Francisco.
Space: 16 Spaces Available
Listing Price Range: From \$35.00 PSF - Fully Serviced
Type: Office
Term: Negotiable

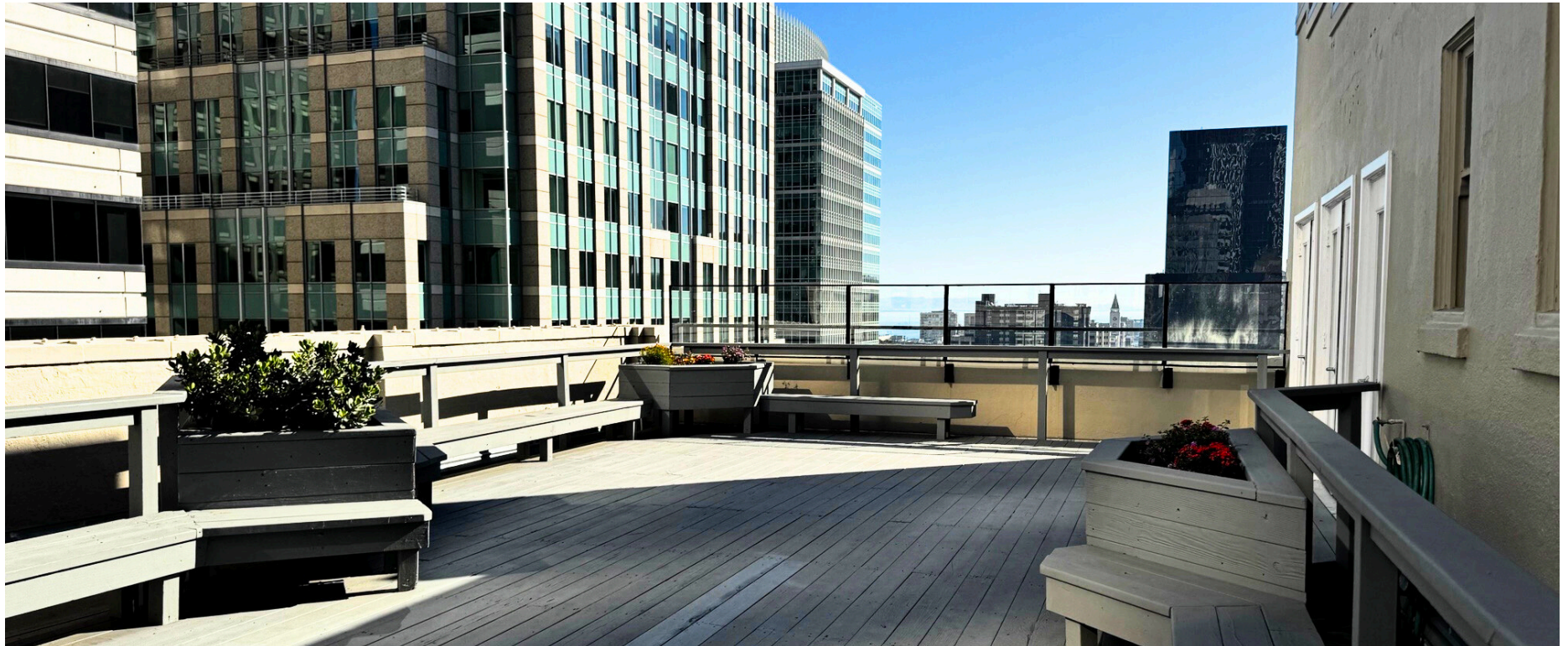
605 Market Street is premier office building located right in the heart of the South Financial District. South FiDi is a major financial hub home to several prominent financial institutions along with major banks, law firms and technology companies. There are endless amenities including several cafes, restaurants, and bars within walking distance. The building is well connected by public transportation with Montgomery BART a half block away. 605 Market Street offers full and partial floors with flexible lease terms and sweeping view of downtown San Francisco

605 Market St. Special Offer!
Sign Your Lease by January 31st and Enjoy 45 Days of Free Rent Each Year!



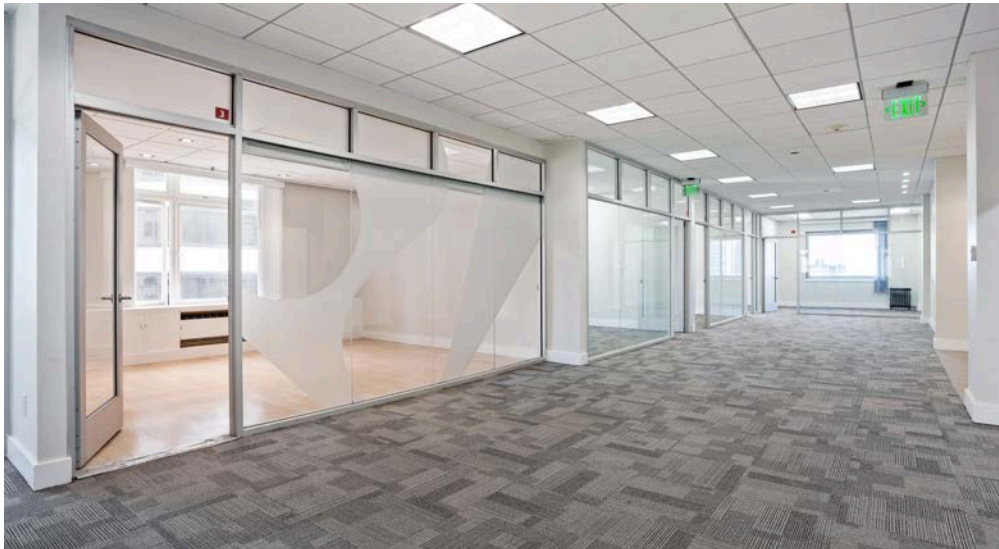
Suite 1400

- 4,628 SQFT
- \$45.00 PSF – Fully Serviced
- Full floor
- Penthouse suite with an exclusive outside deck overlooking 2nd Street
- Multiple sides of natural lights
- Open Area
- 13 Private Offices
- Kitchenette



14TH FLOOR – IMAGES

For Lease

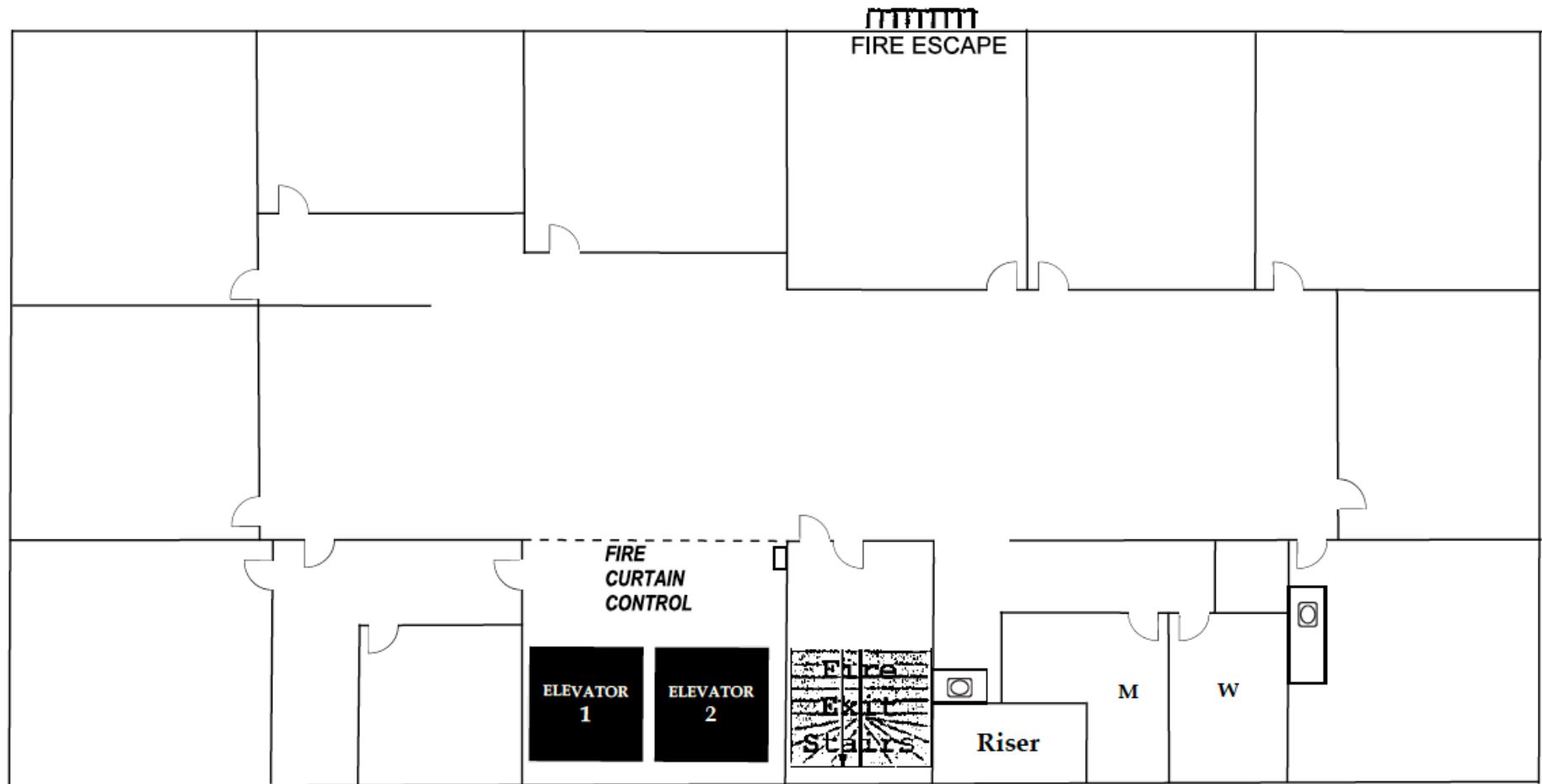


This information has been secured by Starboard CRE from sources believed to be reliable. It is not guaranteed and should be verified before closing any transaction.

STARBOARD CRE
LOCAL • INDEPENDENT • ENTREPRENEURIAL

14TH FLOOR – FLOORPLAN

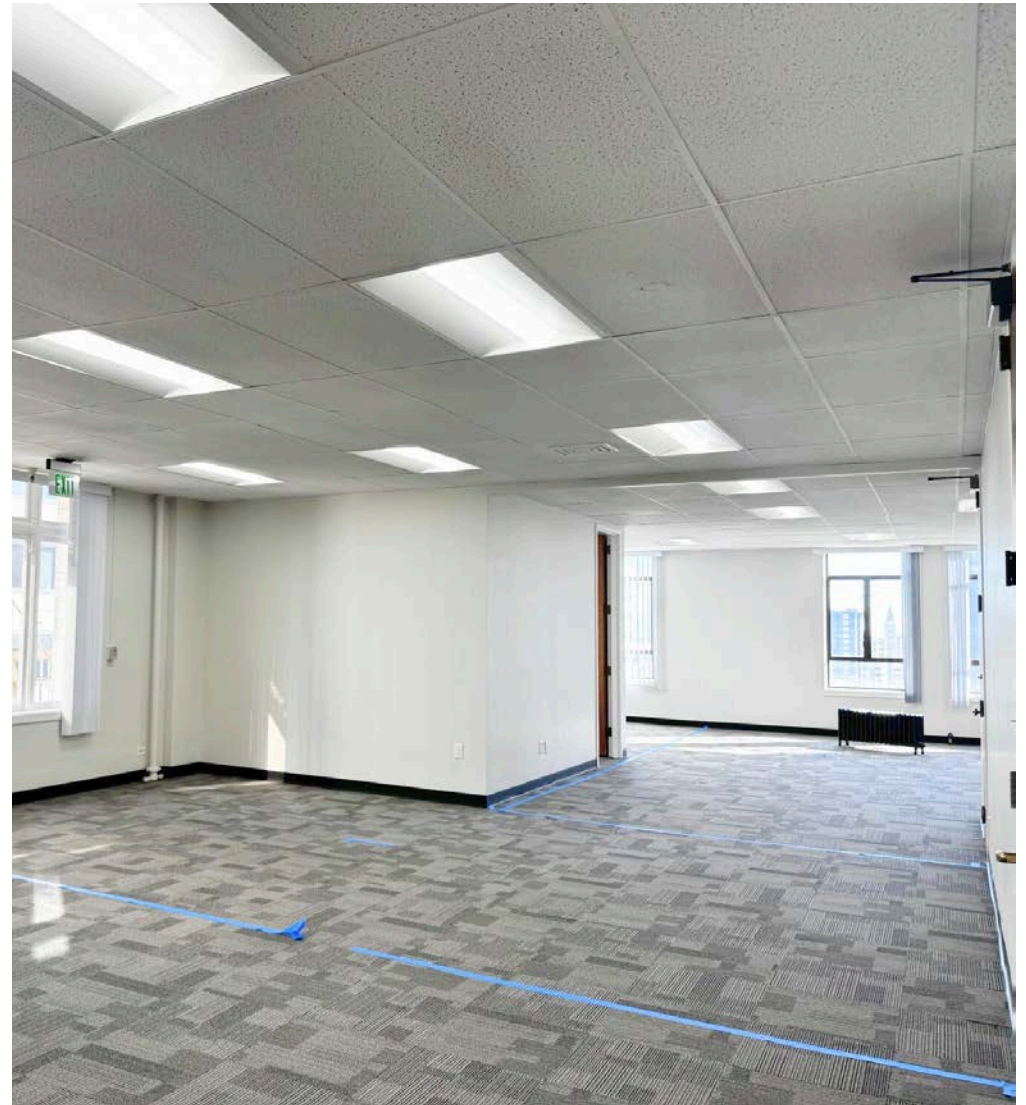
For Lease



This information has been secured by Starboard CRE from sources believed to be reliable. It is not guaranteed and should be verified before closing any transaction.

Suite 1310/1350

- 2,732 SQFT
- \$35.00 PSF - Fully Serviced
- Open layout with great natural light
- Two private offices
- Two kitchenettes



13TH FLOOR-IMAGES

For Lease

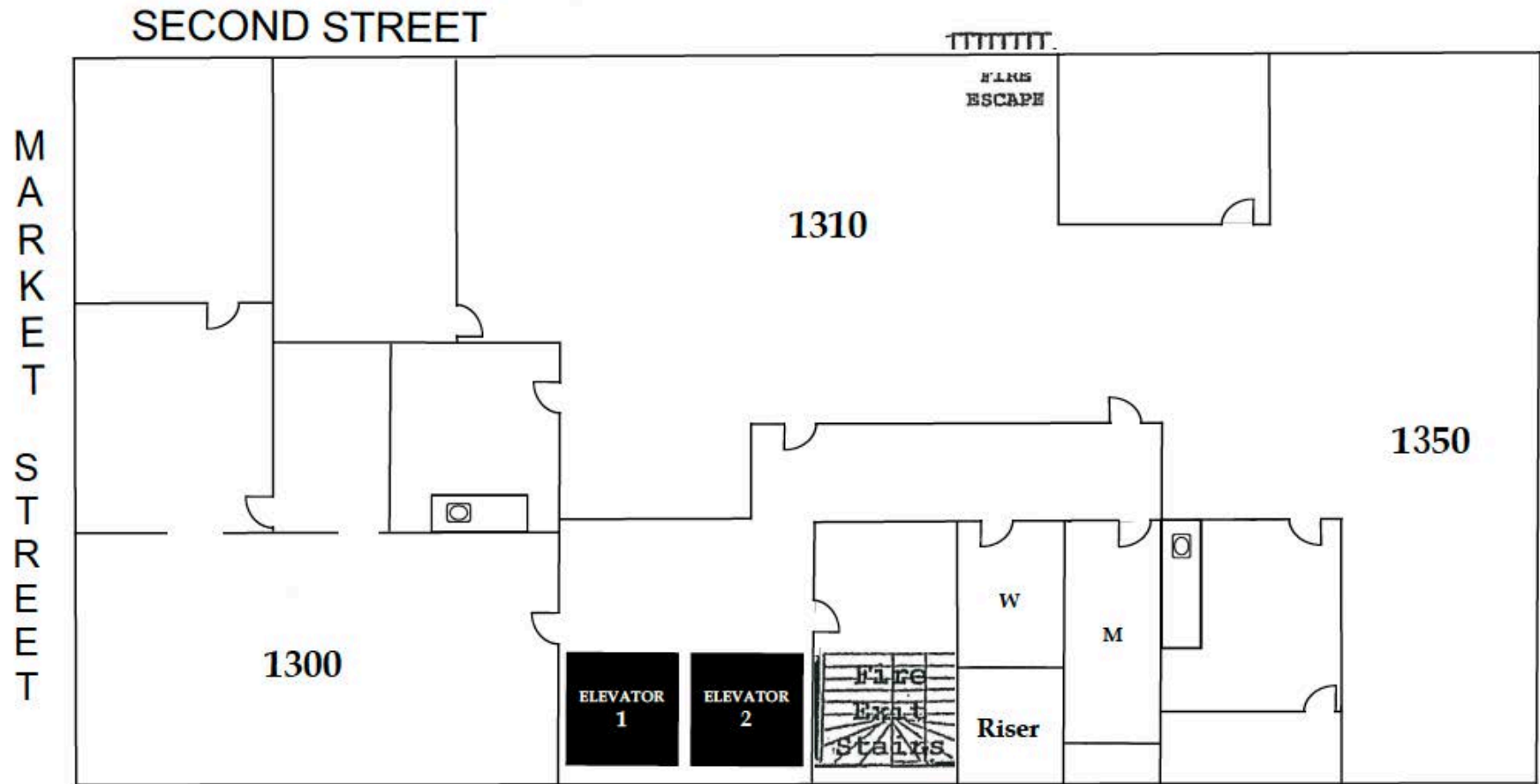


This information has been secured by Starboard CRE from sources believed to be reliable. It is not guaranteed and should be verified before closing any transaction.

STARBOARD CRE
LOCAL • INDEPENDENT • ENTREPRENEURIAL

13TH FLOOR-FLOORPLAN

For Lease



This information has been secured by Starboard CRE from sources believed to be reliable. It is not guaranteed and should be verified before closing any transaction.

Suite 1250

- 1,459 SQFT
- \$35.00 PSF - Fully Serviced
- Open layout
- Four private offices



12TH FLOOR-IMAGES

For Lease

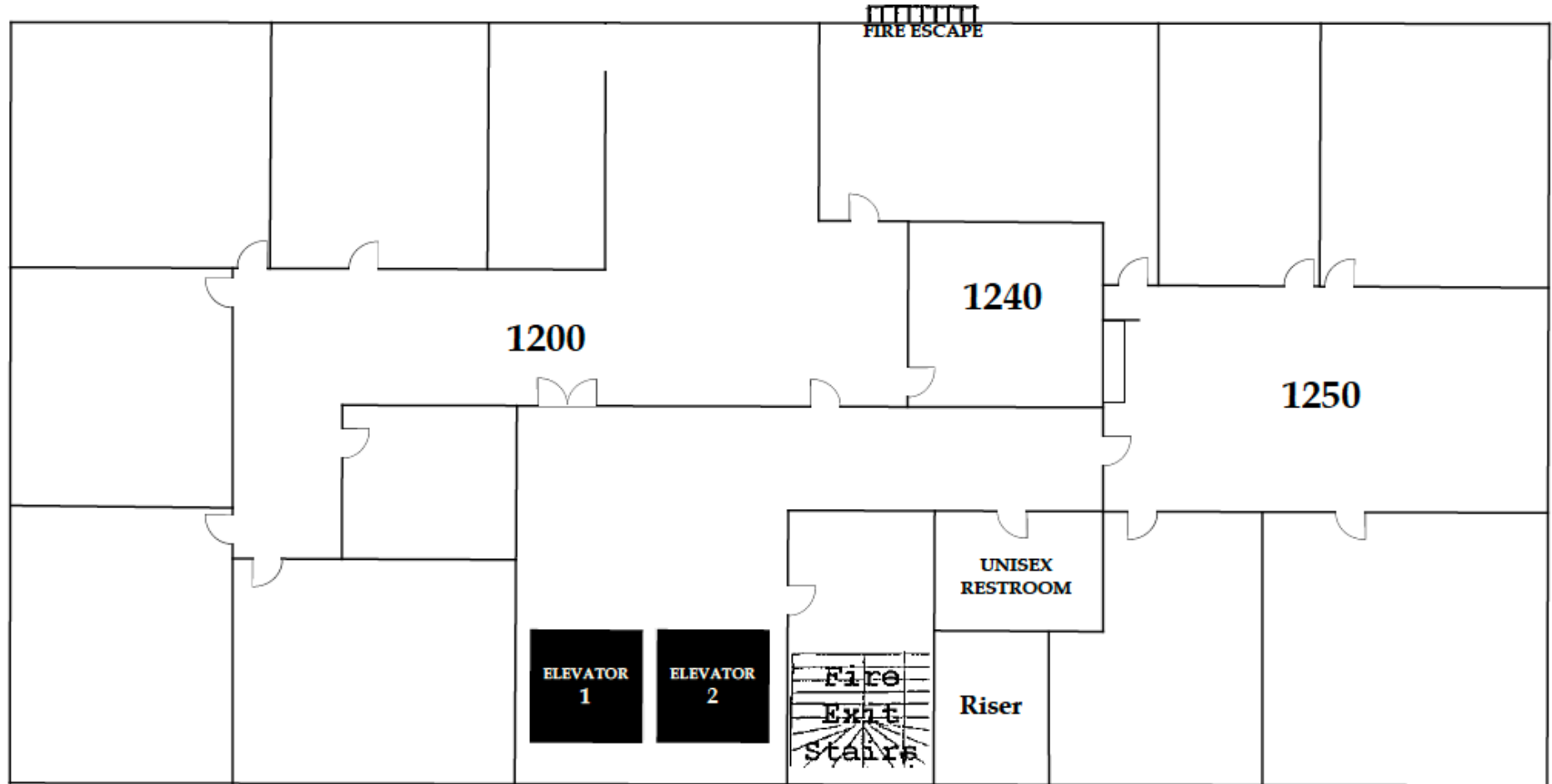


This information has been secured by Starboard CRE from sources believed to be reliable. It is not guaranteed and should be verified before closing any transaction.

STARBOARD CRE
LOCAL • INDEPENDENT • ENTREPRENEURIAL

12TH FLOOR-FLOORPLAN

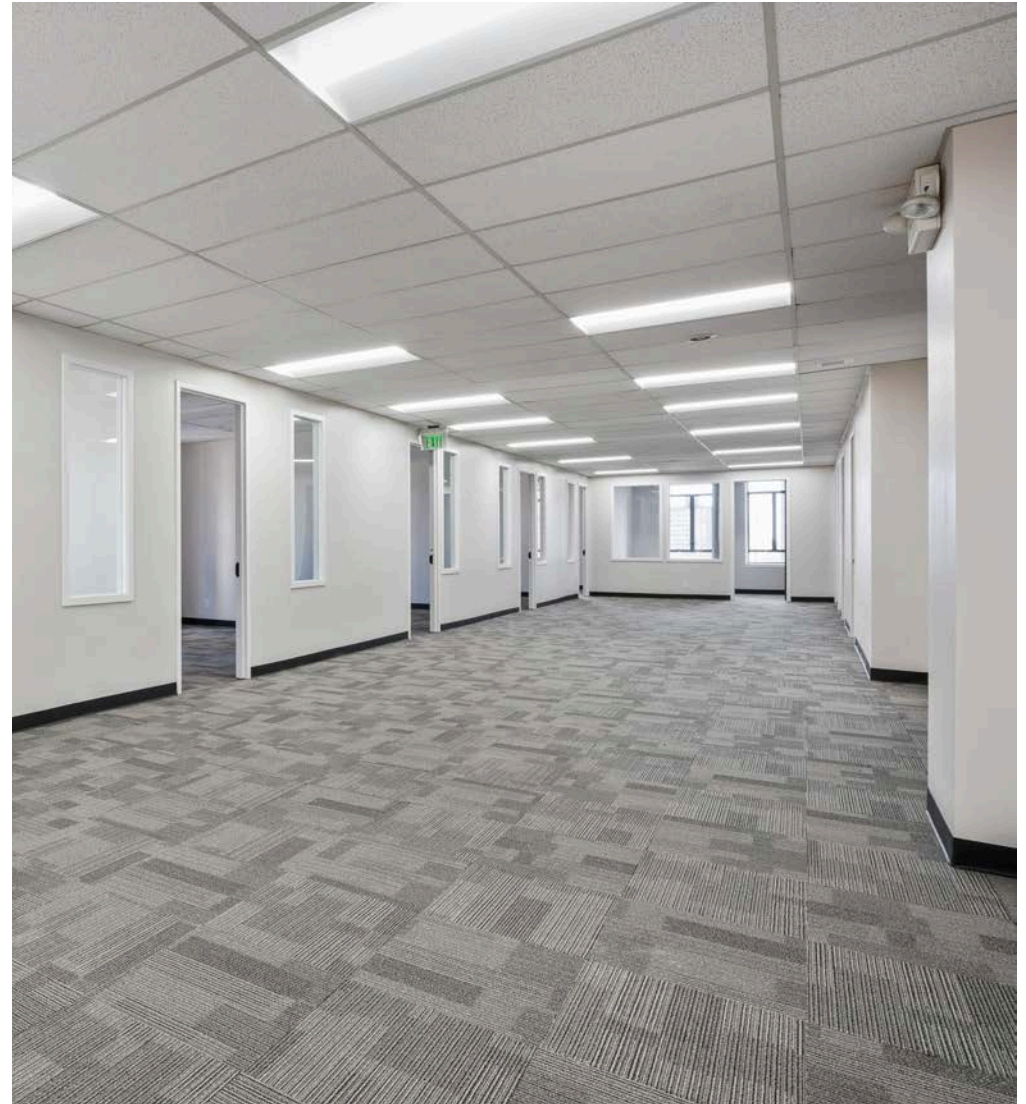
For Lease



This information has been secured by Starboard CRE from sources believed to be reliable. It is not guaranteed and should be verified before closing any transaction.

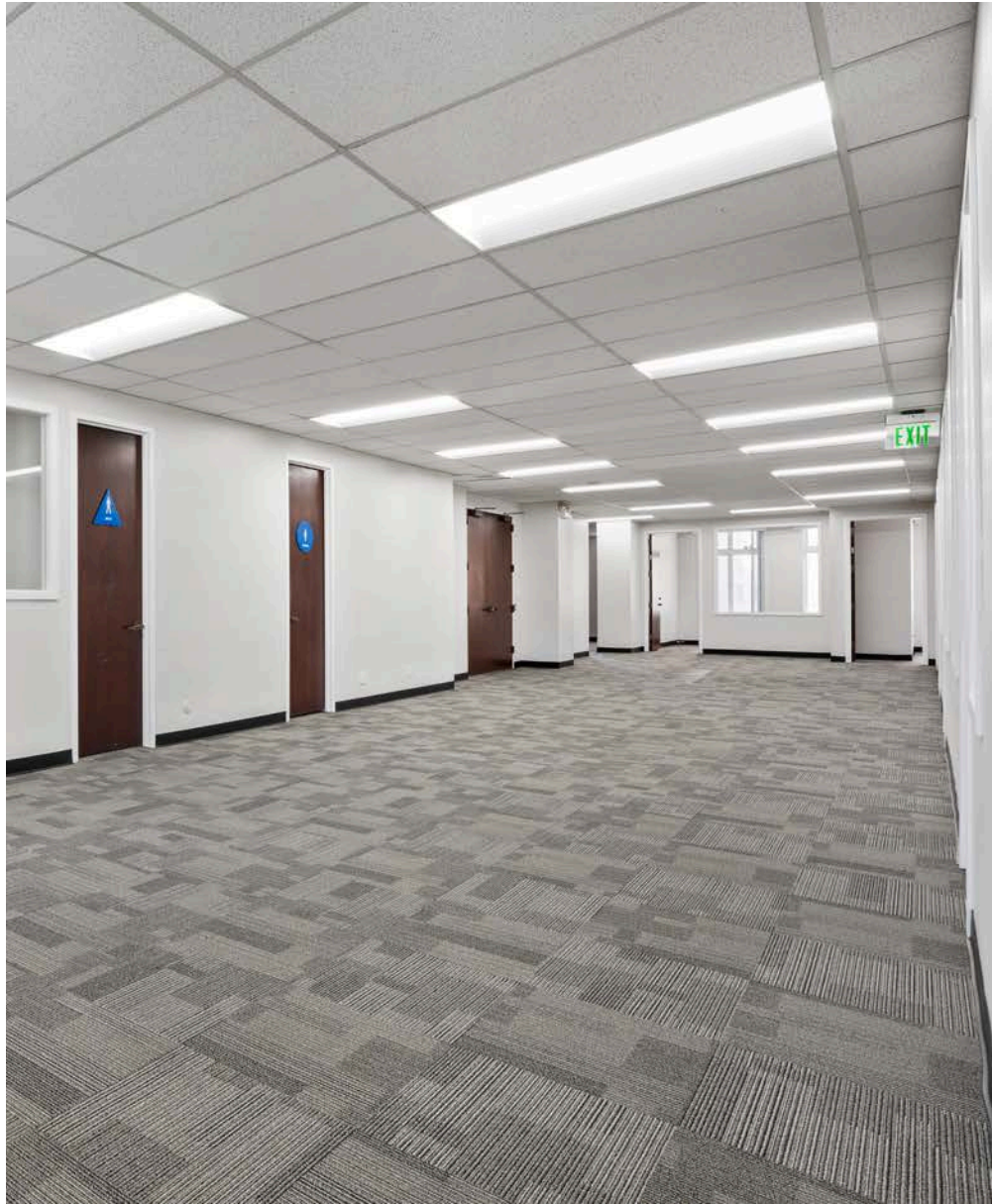
Suite 1000

- 3,685 SQFT
- \$35.00 PSF - Fully Serviced
- Full floor
- Open area
- Great natural light
- Twelve private offices around the perimeter
- Two private restrooms



10TH FLOOR-IMAGES

For Lease

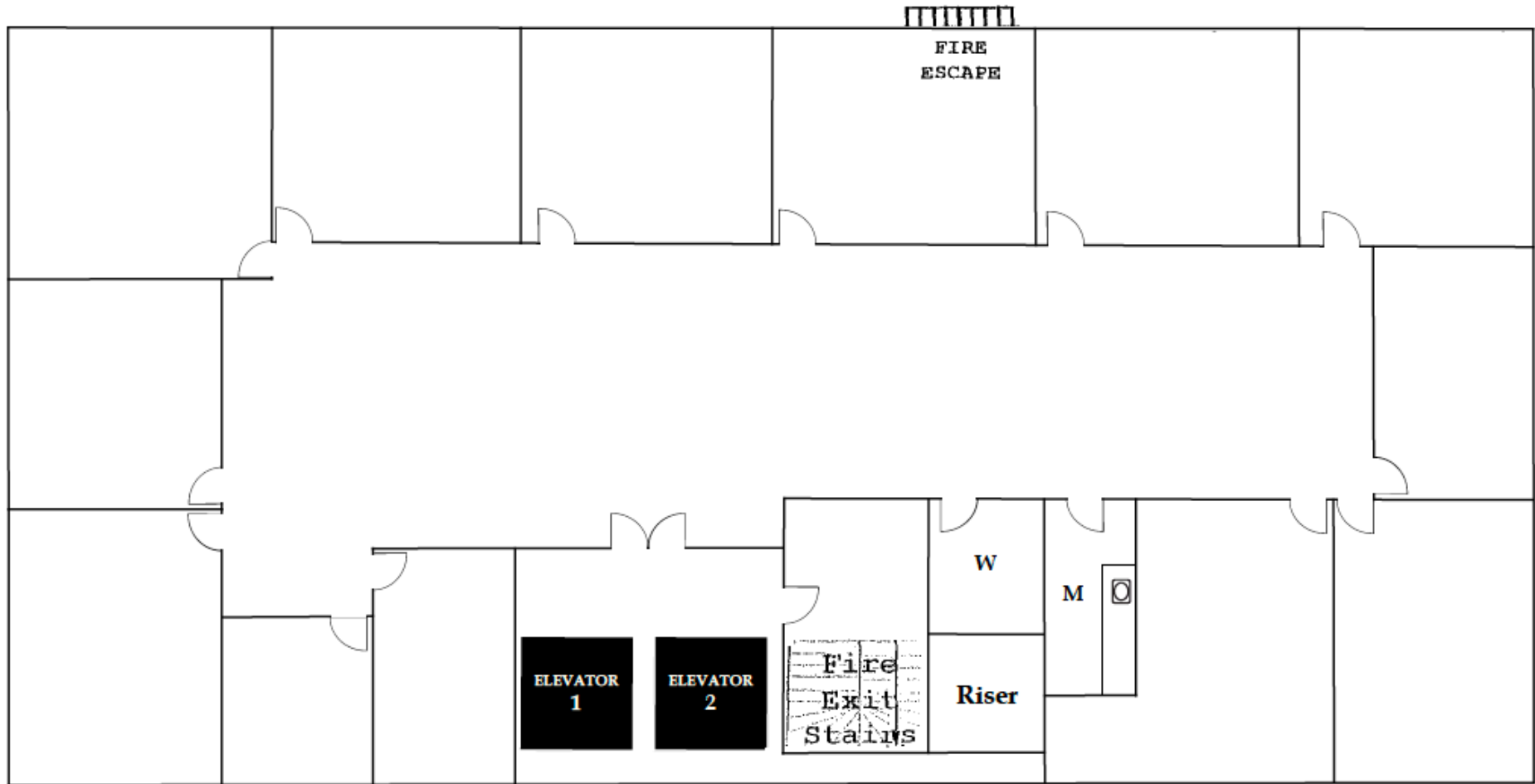


This information has been secured by Starboard CRE from sources believed to be reliable. It is not guaranteed and should be verified before closing any transaction.

STARBOARD CRE
LOCAL • INDEPENDENT • ENTREPRENEURIAL

10TH FLOOR-FLOORPLAN

For Lease



This information has been secured by Starboard CRE from sources believed to be reliable. It is not guaranteed and should be verified before closing any transaction.

STARBOARD CRE
LOCAL • INDEPENDENT • ENTREPRENEURIAL

Suite 900

- 3,693 SQFT
- \$35.00 PSF - Fully Serviced
- Full floor
- Open area
- Nine private offices
- Two restrooms
- Kitchenette
- Great natural lights



9TH FLOOR-IMAGES

For Lease

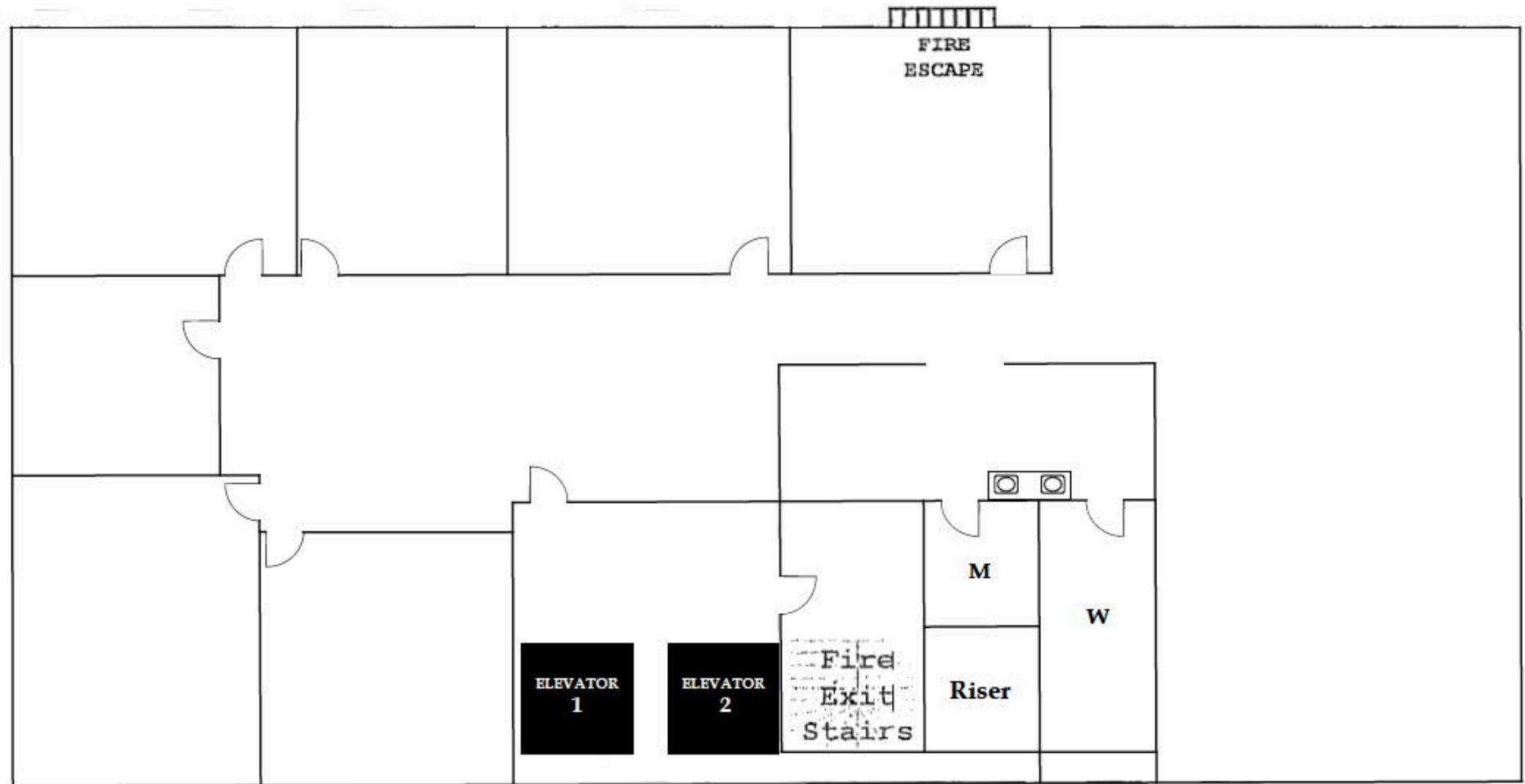


This information has been secured by Starboard CRE from sources believed to be reliable. It is not guaranteed and should be verified before closing any transaction.

STARBOARD CRE
LOCAL • INDEPENDENT • ENTREPRENEURIAL

9TH FLOOR-FLOORPLAN

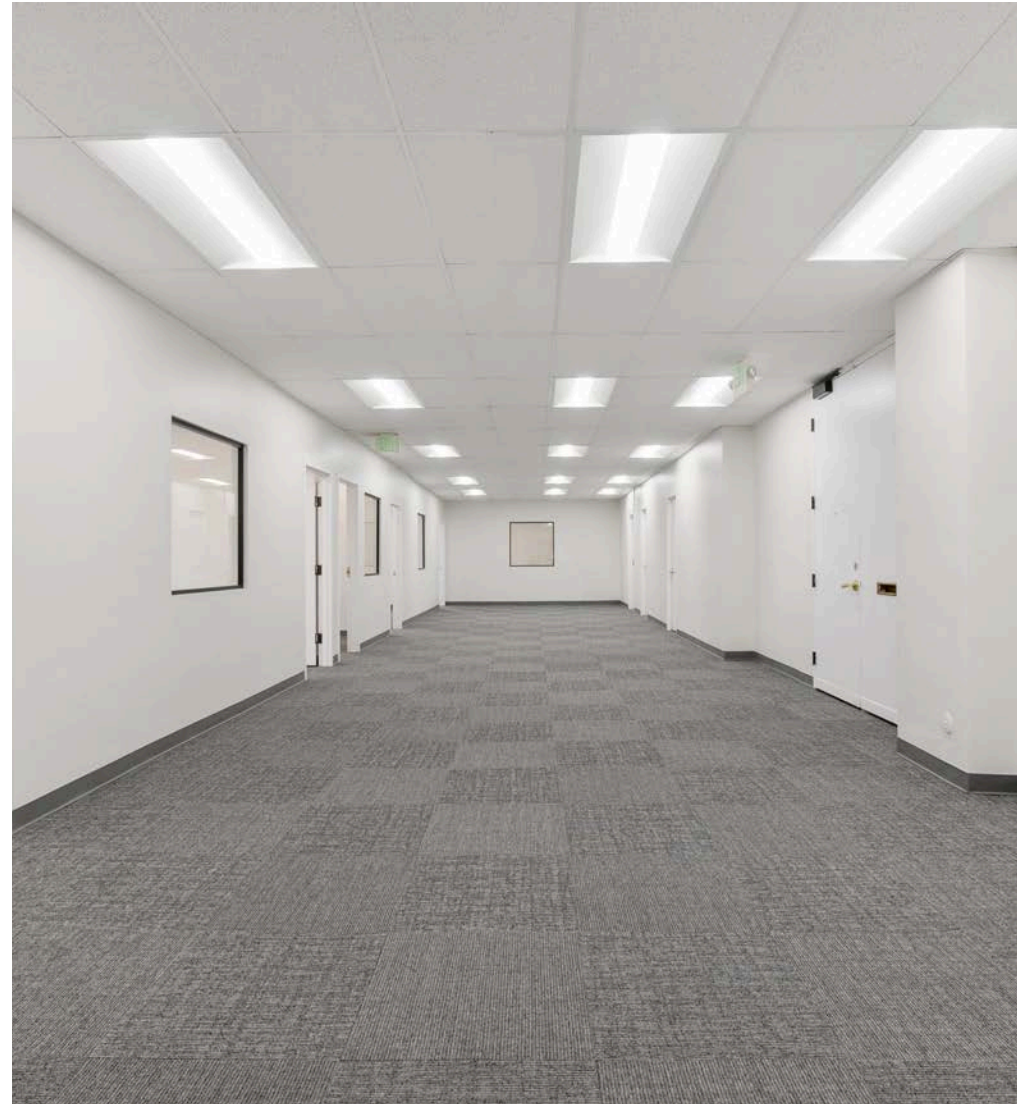
For Lease



This information has been secured by Starboard CRE from sources believed to be reliable. It is not guaranteed and should be verified before closing any transaction.

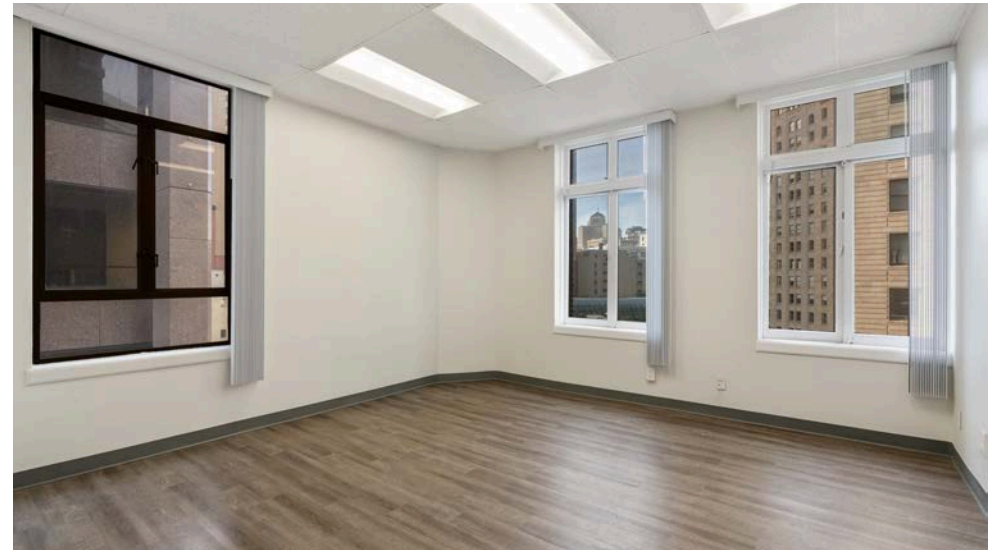
Suite 800

- 3,716 SQFT
- \$35.00 PSF - Fully Serviced
- Full floor
- Recently completed spec suite
- Open layout
- Nine private offices
- One Kitchenette
- Two restrooms



8TH FLOOR-IMAGES

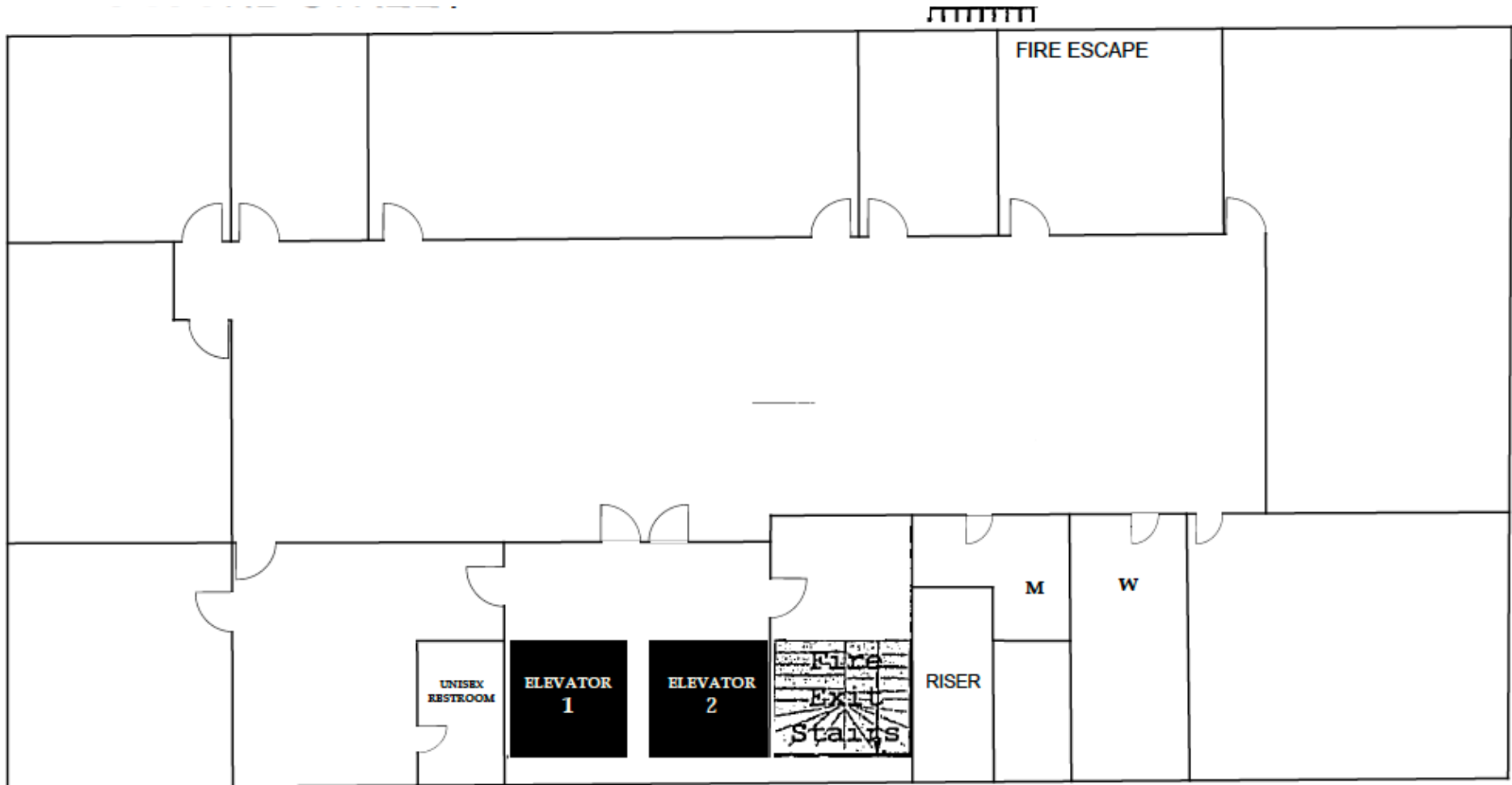
For Lease



This information has been secured by Starboard CRE from sources believed to be reliable. It is not guaranteed and should be verified before closing any transaction.

8TH FLOOR-FLOORPLAN

For Lease



This information has been secured by Starboard CRE from sources believed to be reliable. It is not guaranteed and should be verified before closing any transaction.

Suite 507

- 578 SQFT
- \$35.00 PSF - Fully Serviced
- Recently renovated
- Open area
- One private office

Suite 503

- 582 SQFT
- \$35.00 PSF - Fully Serviced
- Recently renovated
- Open area
- One private office
- Kitchenette

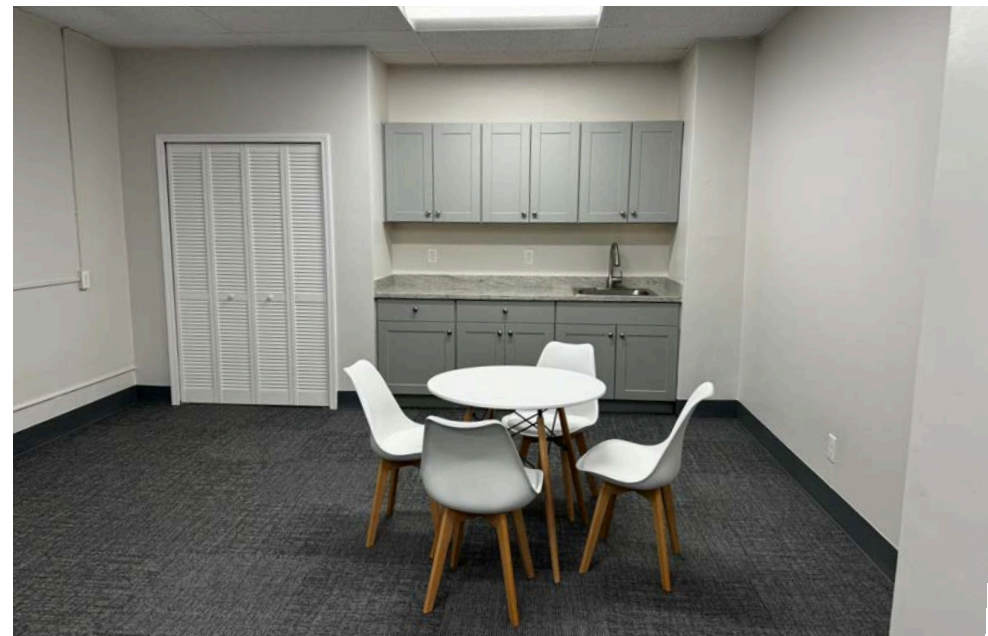
Suite 509

- 276 SQFT
- \$35.00 PSF - Fully Serviced
- Recently renovated
- Reception area
- One private office



5TH FLOOR-IMAGES

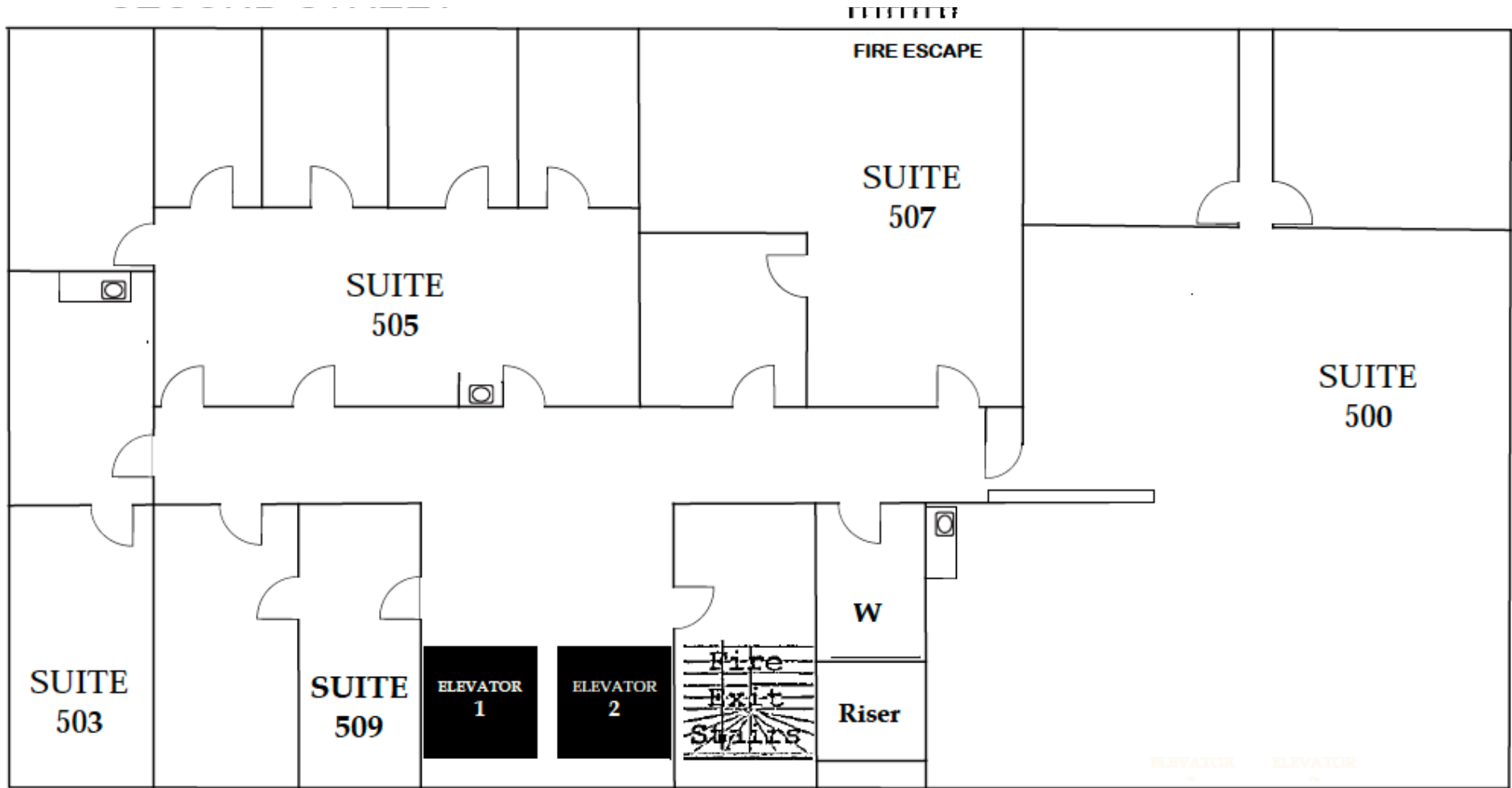
For Lease



This information has been secured by Starboard CRE from sources believed to be reliable. It is not guaranteed and should be verified before closing any transaction.

5TH FLOOR – FLOORPLAN

For Lease



This information has been secured by Starboard CRE from sources believed to be reliable. It is not guaranteed and should be verified before closing any transaction.

Suite 400

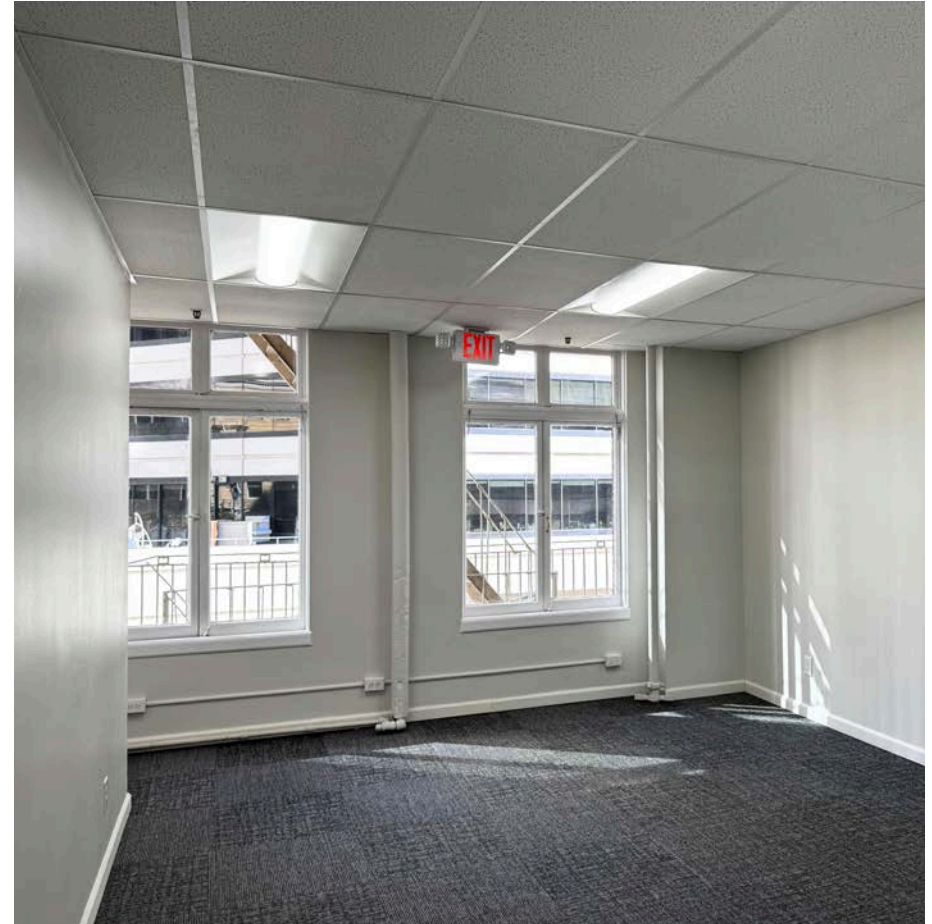
- 595 SQFT
- \$35.00 PSF - Fully Serviced
- Two Large Private Rooms
- Kitchen Area

Suite 401

- 1,346 SQFT
- \$35.00 PSF - Fully Serviced
- 3 Window-line Private Offices
- 1 Conference Room
- 1 Storage
- Open layout

Suite 408

- 367 SQFT
- \$35.00 PSF - Fully Serviced
- One Large Room
- Open layout



Suite 408

4TH FLOOR-IMAGES

For Lease



Suite 401



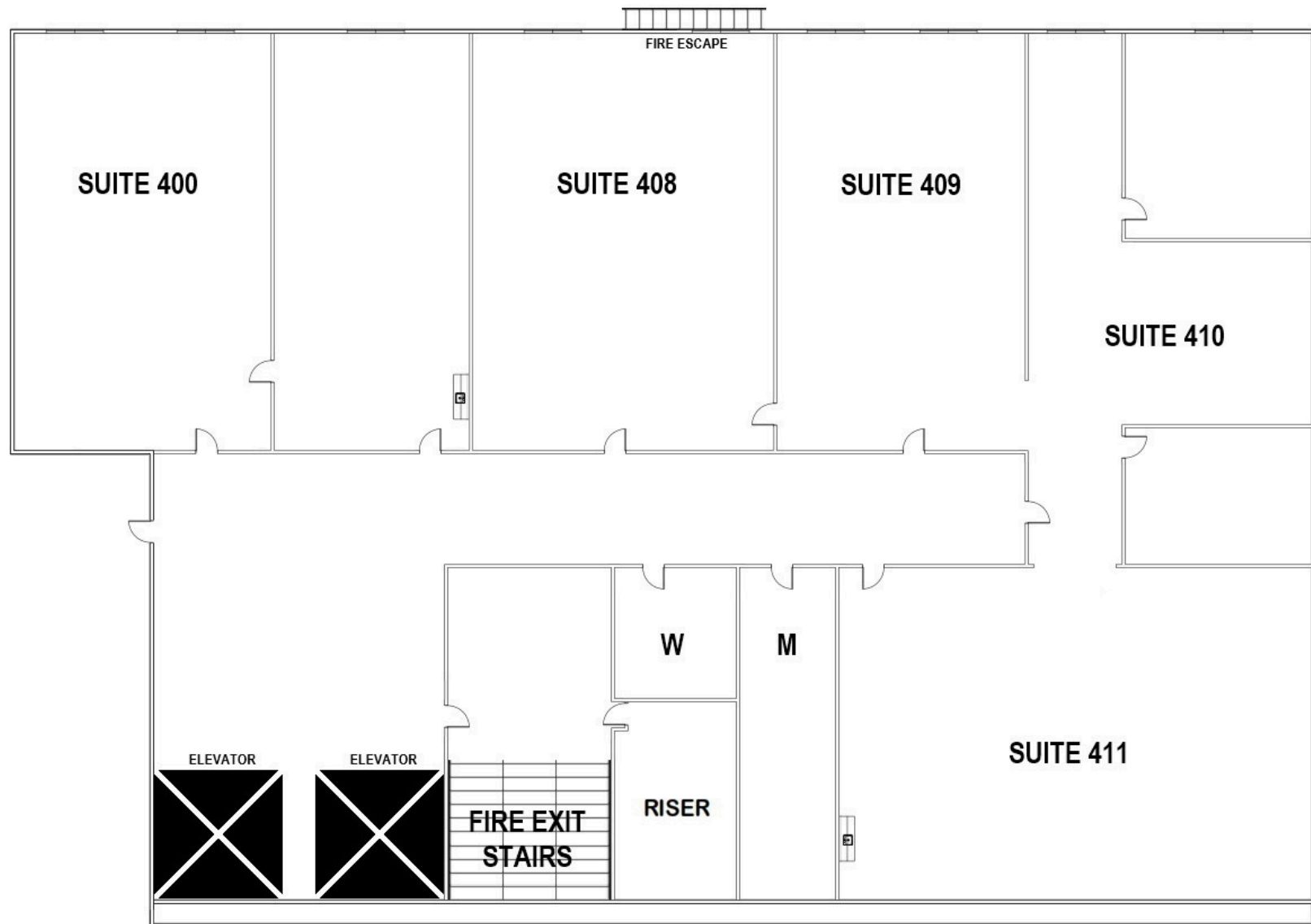
Suite 400

This information has been secured by Starboard CRE from sources believed to be reliable. It is not guaranteed and should be verified before closing any transaction.

STARBOARD CRE
LOCAL • INDEPENDENT • ENTREPRENEURIAL

4TH FLOOR – FLOORPLAN

For Lease



This information has been secured by Starboard CRE from sources believed to be reliable. It is not guaranteed and should be verified before closing any transaction.

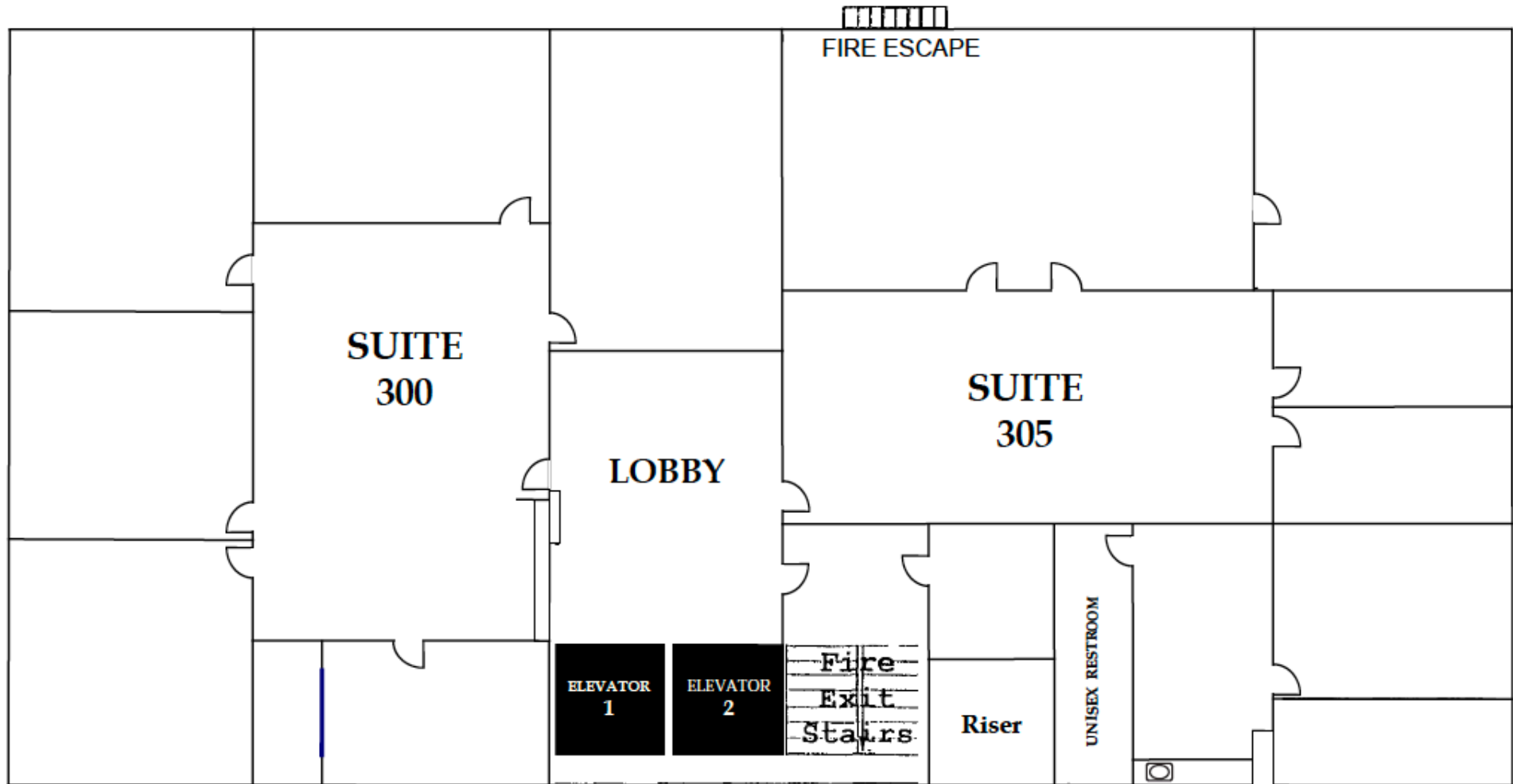
Suite 300

- 1,467 SQFT
- \$35.00 PSF - Fully Serviced
- 5 Large Private Offices



3RD FLOOR – FLOORPLAN

For Lease



This information has been secured by Starboard CRE from sources believed to be reliable. It is not guaranteed and should be verified before closing any transaction.

AERIAL VIEW

For Lease



This information has been secured by Starboard CRE from sources believed to be reliable. It is not guaranteed and should be verified before closing any transaction.

STARBOARD CRE
LOCAL • INDEPENDENT • ENTREPRENEURIAL



Hans Hansson

President / Broker of Record
hans@starboardcre.com
CELL: 415.517.2589
CA DRE # 00872902

Call

View Profile



Craig Hansson

Vice President
craig@starboardcre.com
CELL: 415.710.7768
CA DRE #01841643

Call

View Profile



Mark Meier

Senior Leasing & Sales Associate
mark@starboardcre.com
CELL: 415.299.7042
BRE # 02047169

Call

View Profile



STARBOARD CRE
LOCAL • INDEPENDENT • ENTREPRENEURIAL

STARBOARDCRE.COM
OFC. PHONE 415.765.6900
49 POWELL STREET, SAN FRANCISCO, CA 94102



Unique Vision

We see what others miss

Local Market Leader

No one knows Northern
California like we do

Full-Service Firm

We do it all

Locally based, and technology-forward, our brokers are highly qualified experts backed by a full-service, in-house support team who understand the intricacies of San Francisco real estate. Starboard CRE brings decades of brokerage experience representing over 600 million square feet of space with an aggregate lease value of over 10 billion and investments sold over 3 billion.

CA DRE# 01103056

TCN
WORLDWIDE
REAL ESTATE SERVICES

AREA
ASSOCIATED REALTY OF THE AMERICAS