



**STARBOARD CRE**  
LOCAL • INDEPENDENT • ENTREPRENEURIAL

For Lease

**605 Market Street**

San Francisco, CA 94105

**605 Market St. Special Offer!**  
**Sign Your Lease by March 31st and Enjoy**  
**45 Days of Free Rent Each Year!**

**Hans Hansson**  
415.517.2589

**Craig Hansson**  
415.710.7768

**Mark Meier**  
415.299.7042



STARBOARDCRE.COM  
49 POWELL STREET, SAN FRANCISCO, CA 94102

# BUILDING OVERVIEW

For Lease

**Building:** 605 Market St, San Francisco.  
**Space:** 12 Spaces Available  
**Listing Price Range:** From \$35.00 PSF - Fully Serviced  
**Type:** Office  
**Term:** Negotiable

605 Market Street is premier office building located right in the heart of the South Financial District. South FiDi is a major financial hub home to several prominent financial institutions along with major banks, law firms and technology companies. There are endless amenities including several cafes, restaurants, and bars within walking distance. The building is well connected by public transportation with Montgomery BART a half block away. 605 Market Street offers full and partial floors with flexible lease terms and sweeping view of downtown San Francisco

**605 Market St. Special Offer!**  
**Sign Your Lease by March 31st and Enjoy 45 Days of Free Rent Each Year!**



This information has been secured by Starboard CRE from sources believed to be reliable. It is not guaranteed and should be verified before closing any transaction.

**STARBOARD CRE**  
LOCAL • INDEPENDENT • ENTREPRENEURIAL

## Suite 1400

- 4,628 SQFT
- \$45.00 PSF – Fully Serviced
- Full floor
- Penthouse suite with an exclusive outside deck overlooking 2nd Street
- Multiple sides of natural lights
- Open Area
- 13 Private Offices
- Kitchenette



# 14TH FLOOR – IMAGES

For Lease

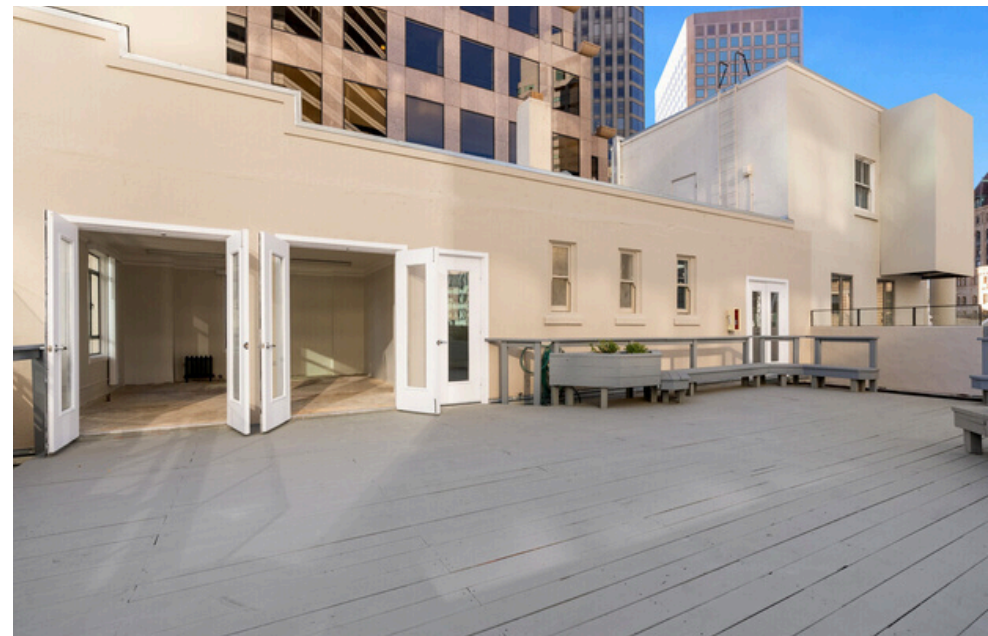


This information has been secured by Starboard CRE from sources believed to be reliable. It is not guaranteed and should be verified before closing any transaction.

**STARBOARD CRE**  
LOCAL • INDEPENDENT • ENTREPRENEURIAL

# 14TH FLOOR – IMAGES

For Lease

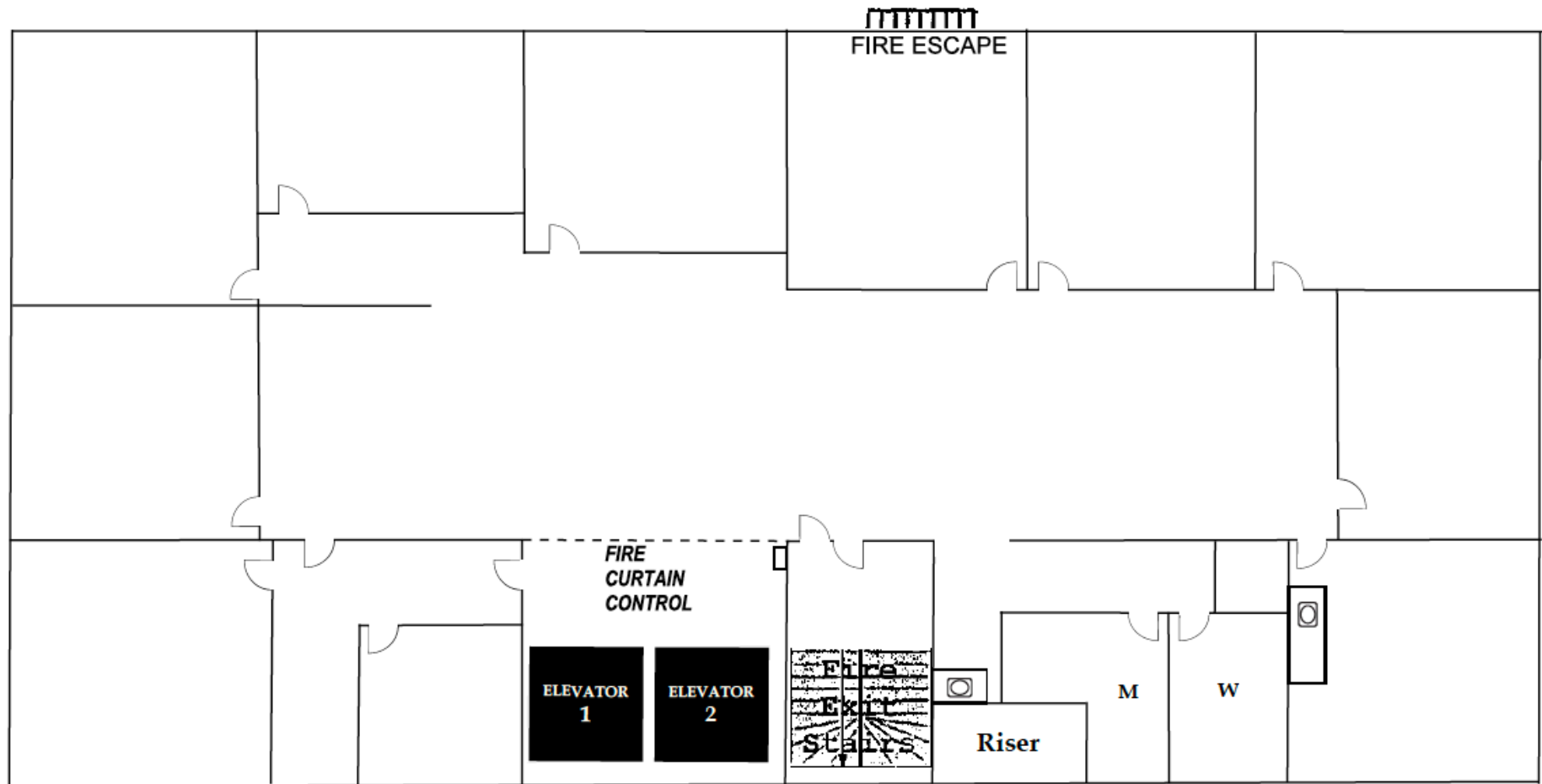


This information has been secured by Starboard CRE from sources believed to be reliable. It is not guaranteed and should be verified before closing any transaction.

**STARBOARD CRE**  
LOCAL • INDEPENDENT • ENTREPRENEURIAL

# 14TH FLOOR – FLOORPLAN

For Lease



This information has been secured by Starboard CRE from sources believed to be reliable. It is not guaranteed and should be verified before closing any transaction.

### Suite 1310/1350

- 2,732 SQFT
- \$35.00 PSF - Fully Serviced
- Open layout with great natural light
- Two private offices
- Two kitchenettes



This information has been secured by Starboard CRE from sources believed to be reliable. It is not guaranteed and should be verified before closing any transaction.

# 13TH FLOOR-IMAGES

For Lease

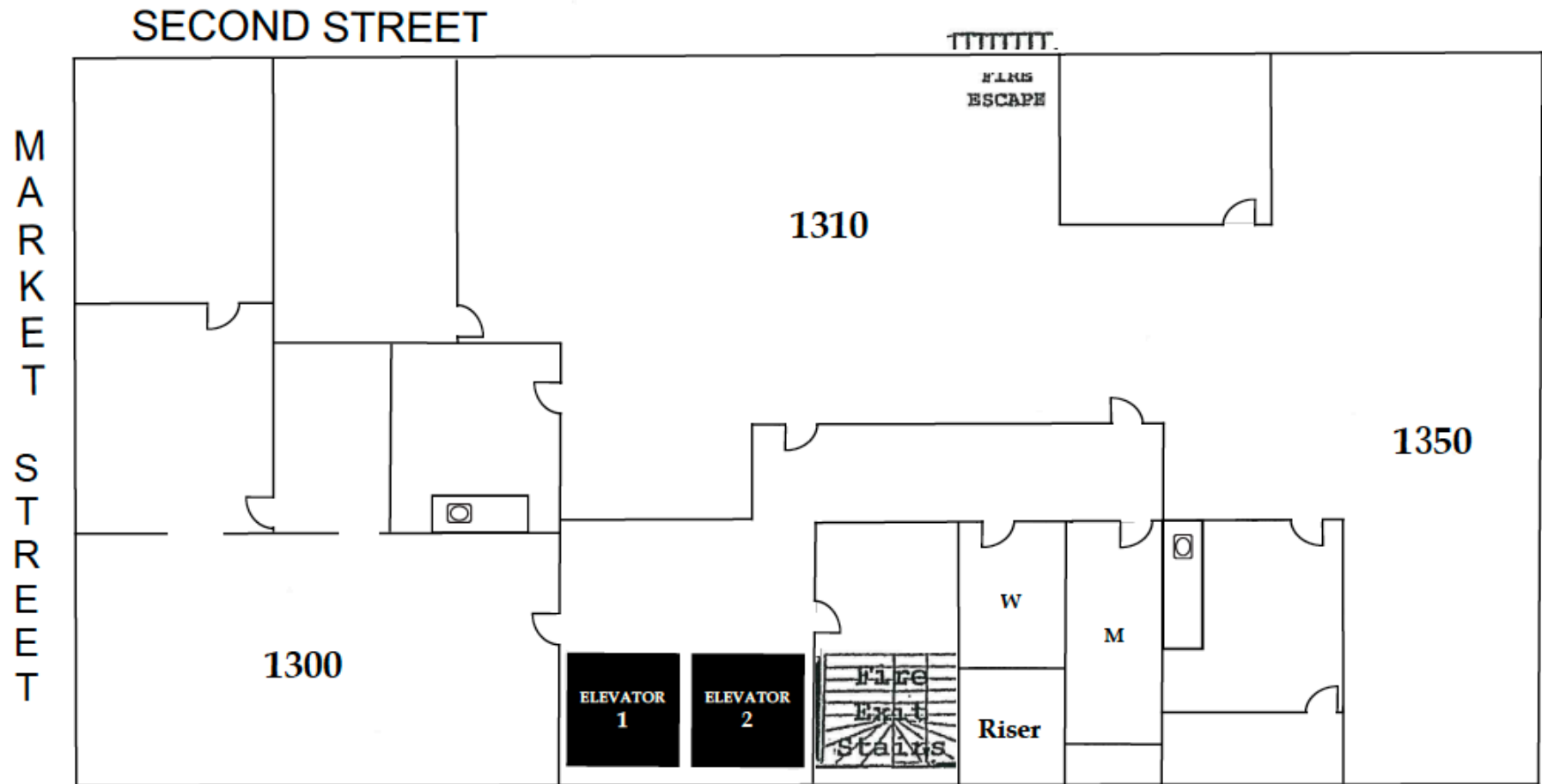


This information has been secured by Starboard CRE from sources believed to be reliable. It is not guaranteed and should be verified before closing any transaction.



# 13TH FLOOR-FLOORPLAN

For Lease



This information has been secured by Starboard CRE from sources believed to be reliable. It is not guaranteed and should be verified before closing any transaction.

## Suite 1000

- 3,685 SQFT
- \$35.00 PSF - Fully Serviced
- Full floor
- Open area
- Great natural light
- Twelve private offices around the perimeter
- Two private restrooms



# 10TH FLOOR-IMAGES

For Lease

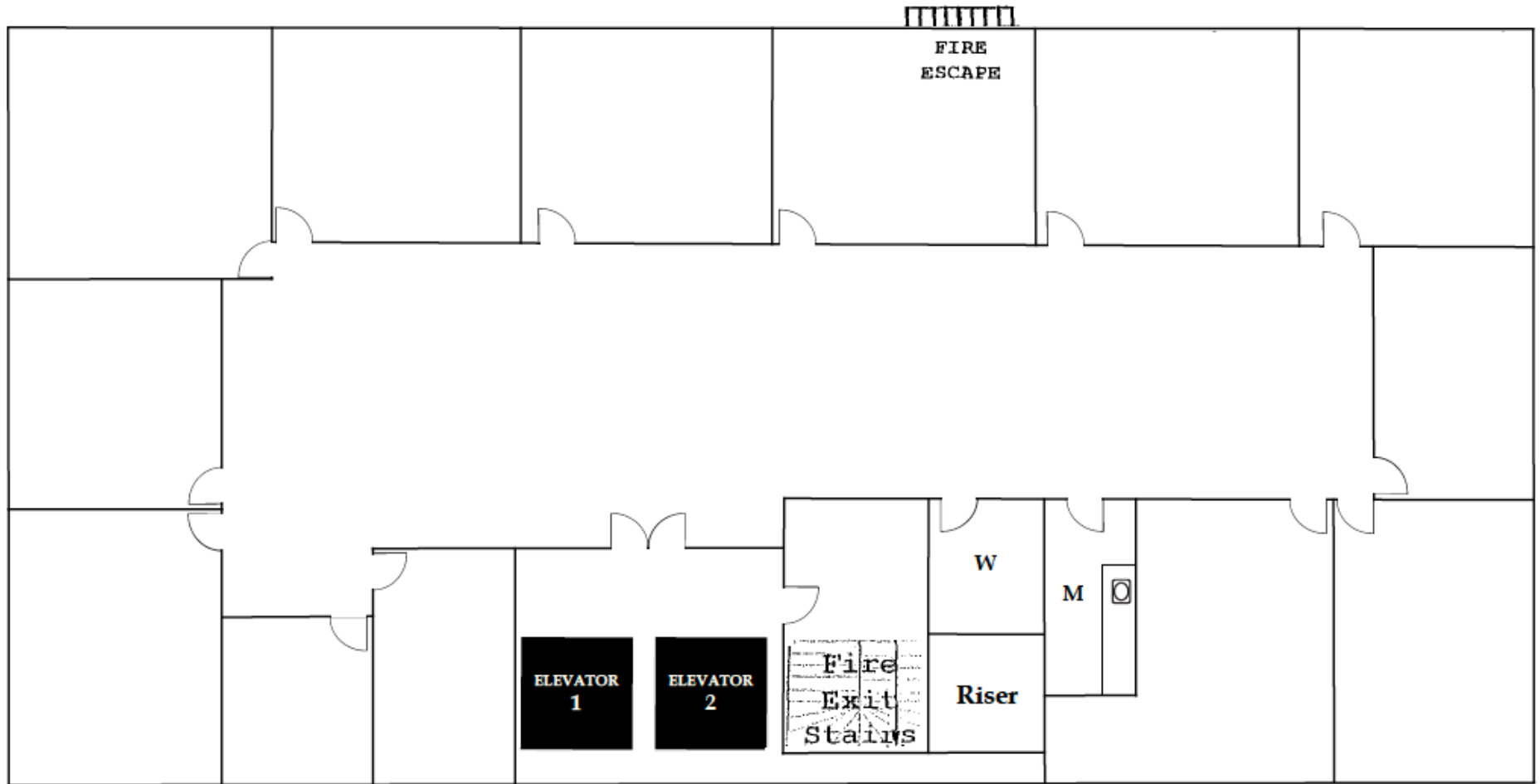


This information has been secured by Starboard CRE from sources believed to be reliable. It is not guaranteed and should be verified before closing any transaction.

**STARBOARD CRE**  
LOCAL • INDEPENDENT • ENTREPRENEURIAL

# 10TH FLOOR-FLOORPLAN

For Lease



This information has been secured by Starboard CRE from sources believed to be reliable. It is not guaranteed and should be verified before closing any transaction.

## Suite 900

- 3,693 SQFT
- \$35.00 PSF - Fully Serviced
- Full floor
- Open area
- Nine private offices
- Two restrooms
- Kitchenette
- Great natural lights



# 9TH FLOOR-IMAGES

For Lease

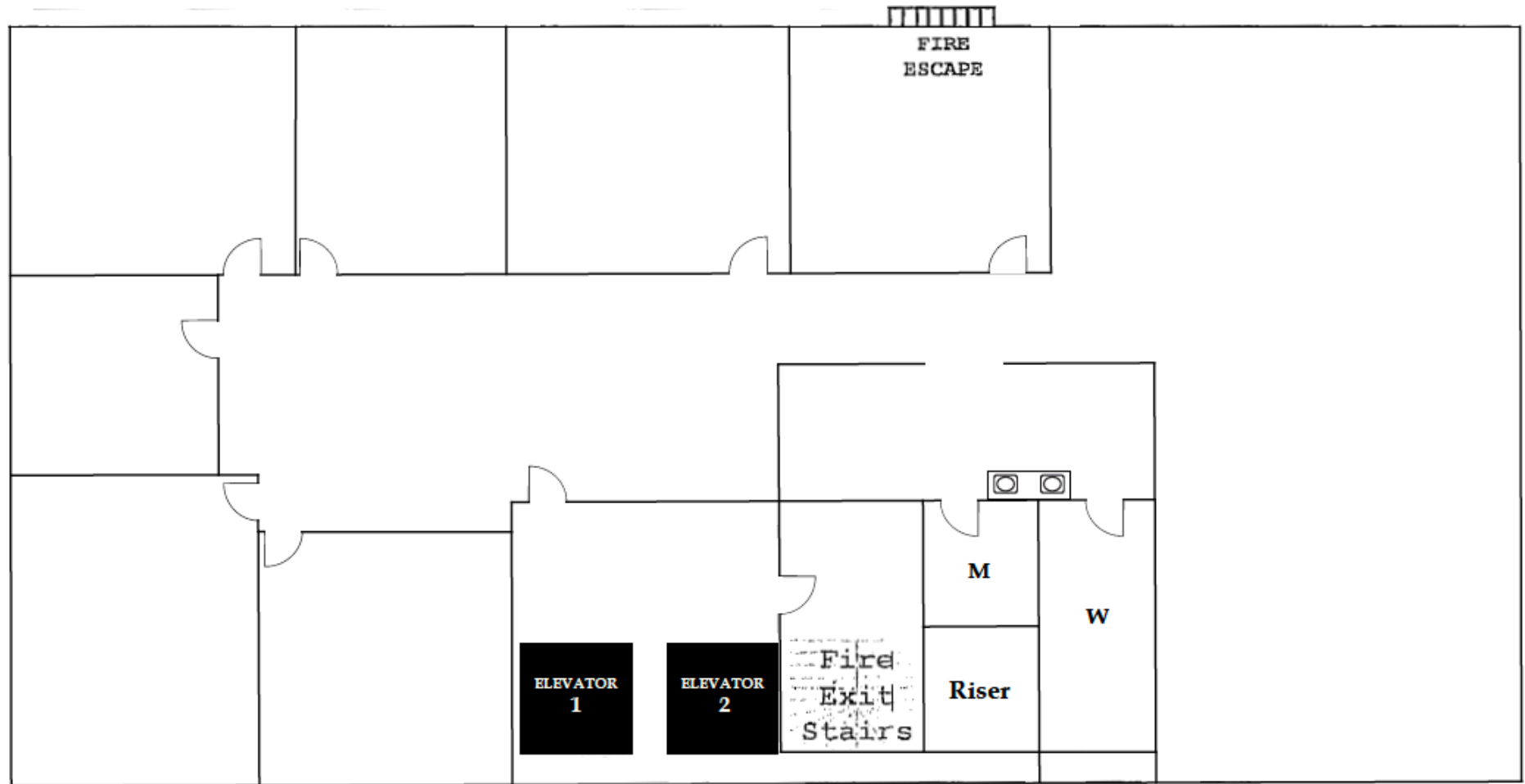


This information has been secured by Starboard CRE from sources believed to be reliable. It is not guaranteed and should be verified before closing any transaction.

**STARBOARD CRE**  
LOCAL • INDEPENDENT • ENTREPRENEURIAL

# 9TH FLOOR-FLOORPLAN

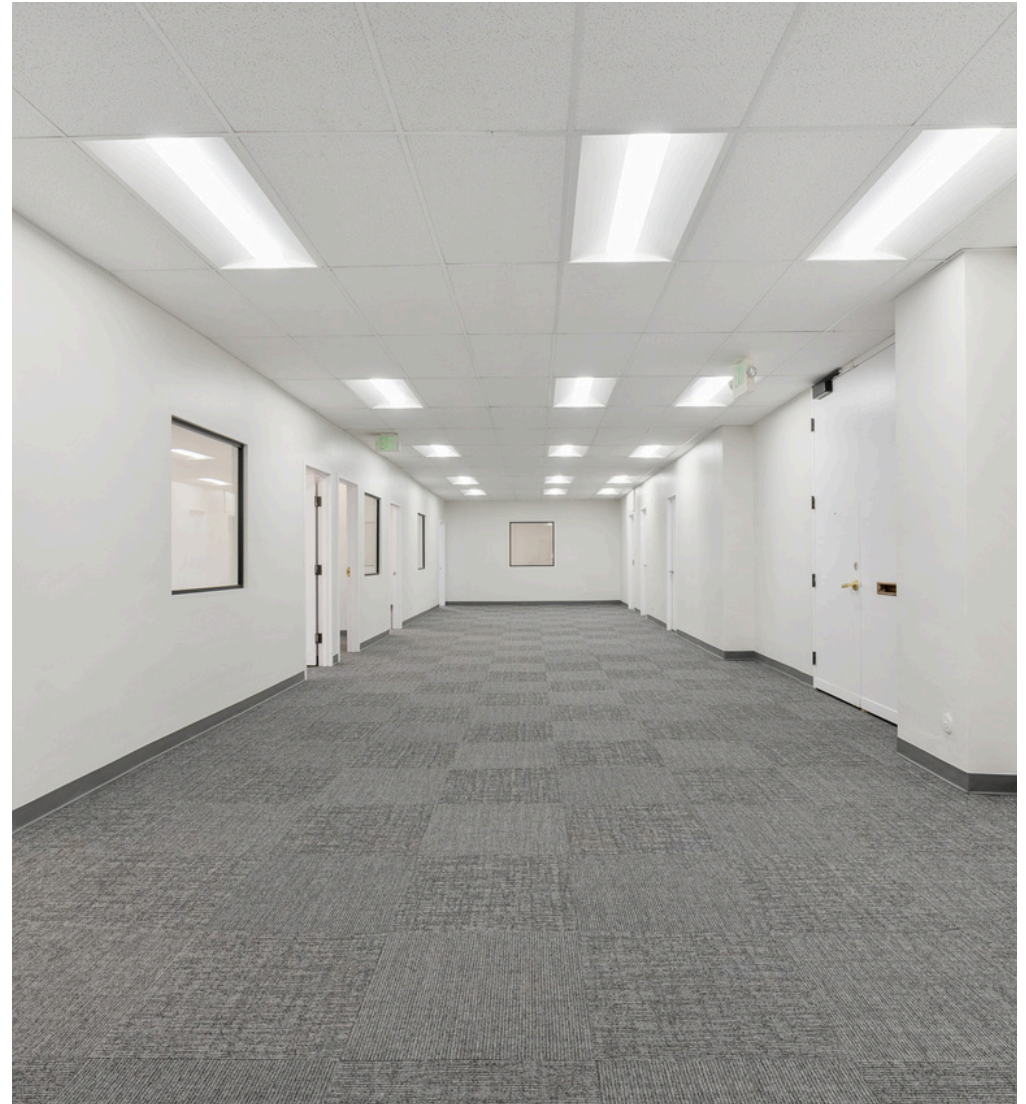
For Lease



This information has been secured by Starboard CRE from sources believed to be reliable. It is not guaranteed and should be verified before closing any transaction.

## Suite 800

- 3,716 SQFT
- \$35.00 PSF - Fully Serviced
- Full floor
- Recently completed spec suite
- Open layout
- Nine private offices
- One Kitchenette
- Two restrooms





# 8TH FLOOR-IMAGES

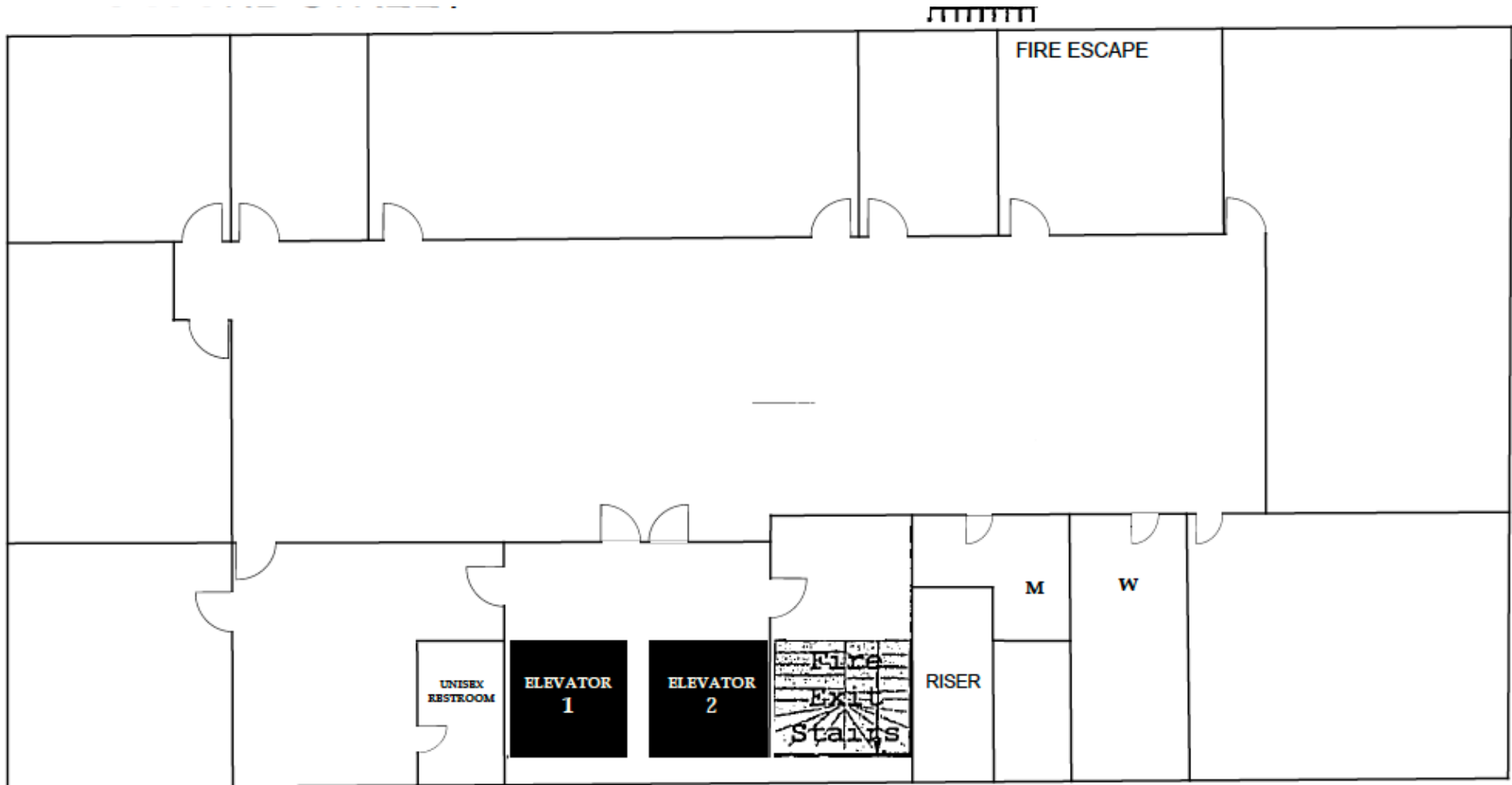
For Lease



This information has been secured by Starboard CRE from sources believed to be reliable. It is not guaranteed and should be verified before closing any transaction.

# 8TH FLOOR-FLOORPLAN

For Lease



This information has been secured by Starboard CRE from sources believed to be reliable. It is not guaranteed and should be verified before closing any transaction.

## Suite 507

- 578 SQFT
- \$35.00 PSF - Fully Serviced
- Recently renovated
- Open area
- One private office

## Suite 503

- 582 SQFT
- \$35.00 PSF - Fully Serviced
- Recently renovated
- Open area
- One private office
- Kitchenette

## Suite 509

- 276 SQFT
- \$35.00 PSF - Fully Serviced
- Recently renovated
- Reception area
- One private office



# 5TH FLOOR-IMAGES

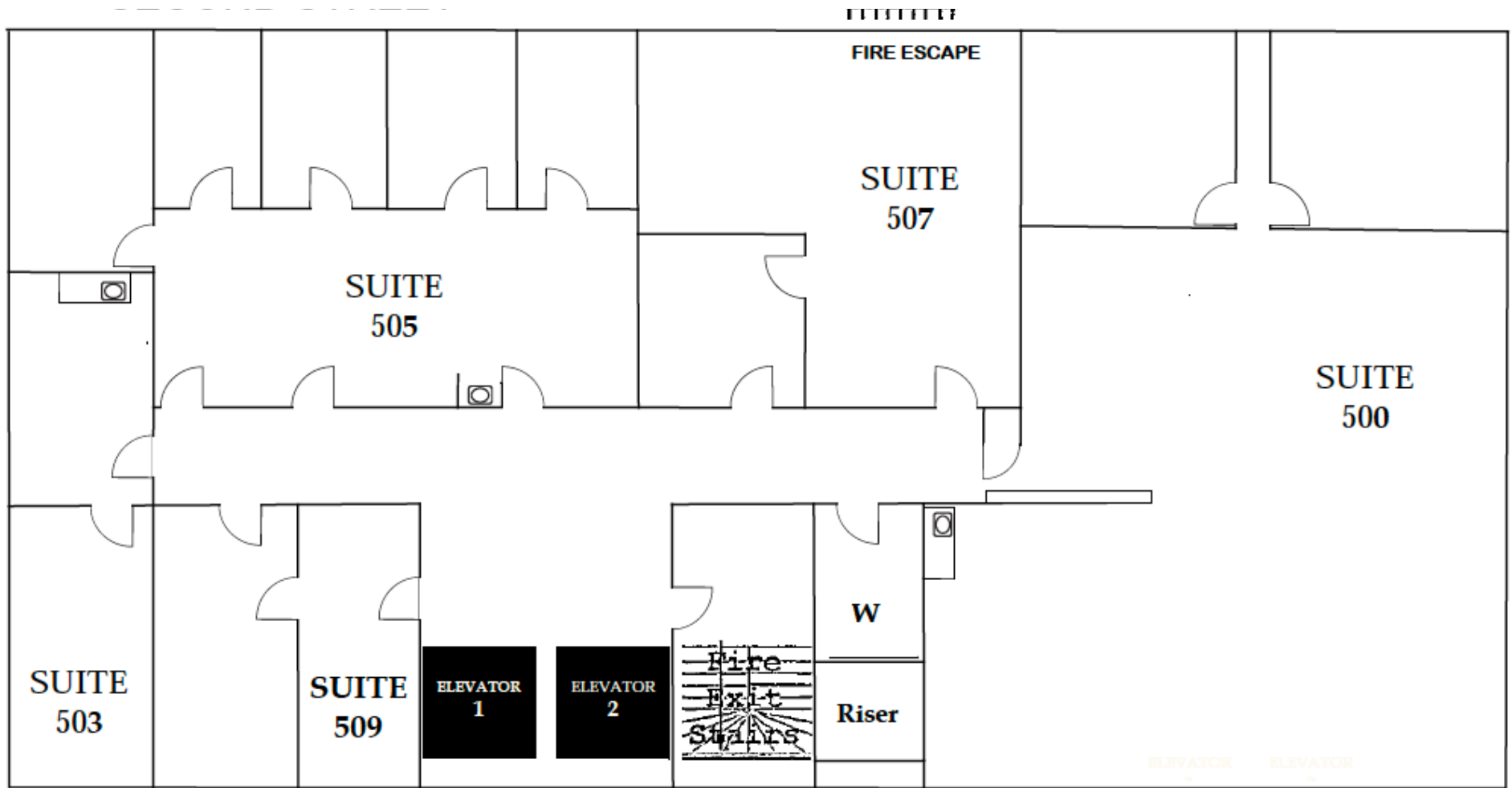
For Lease



This information has been secured by Starboard CRE from sources believed to be reliable. It is not guaranteed and should be verified before closing any transaction.

# 5TH FLOOR – FLOORPLAN

For Lease



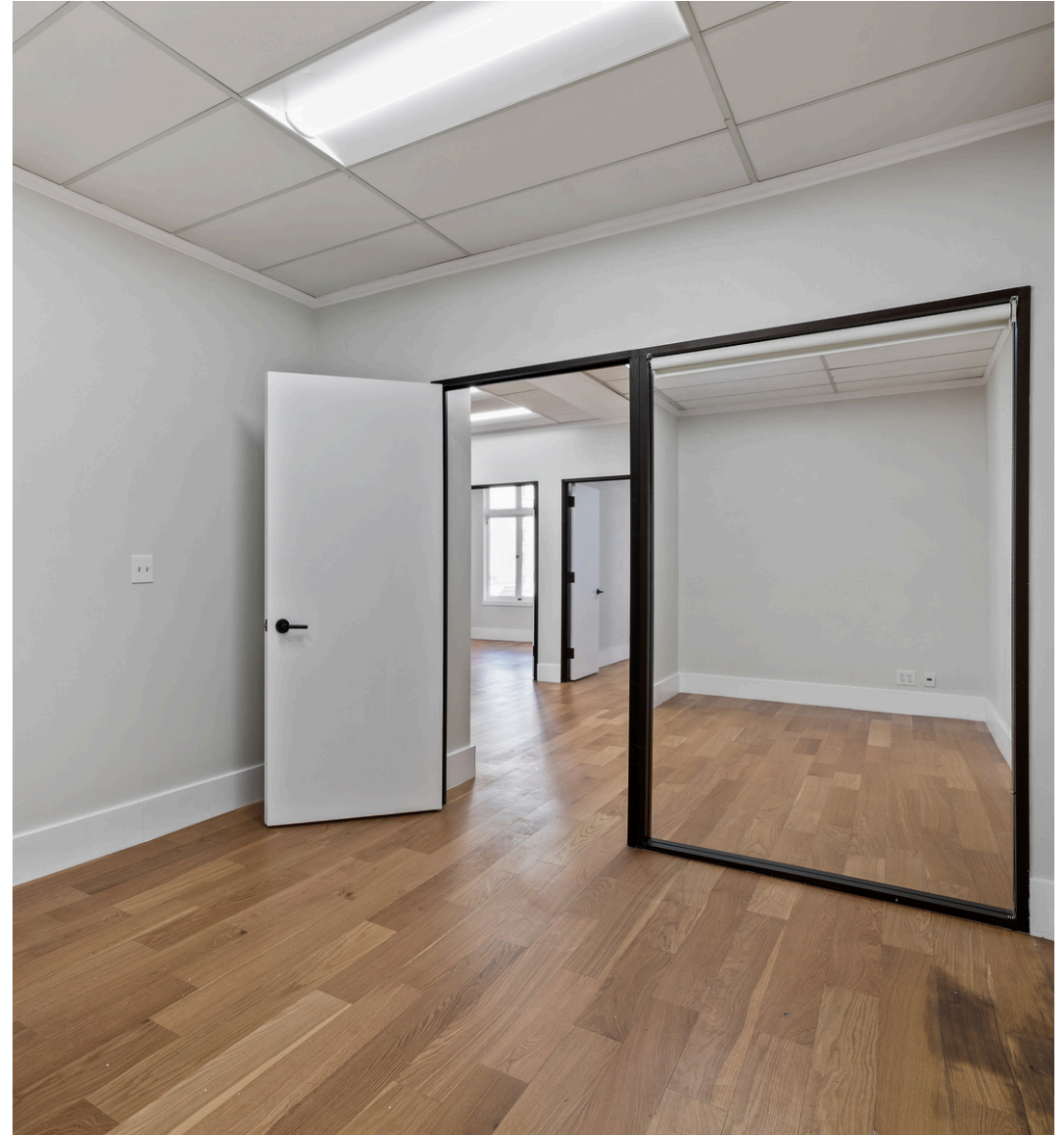
This information has been secured by Starboard CRE from sources believed to be reliable. It is not guaranteed and should be verified before closing any transaction.

## Suite 401

- 1,346 SQFT
- \$35.00 PSF - Fully Serviced
- 3 Window-line Private Offices
- 1 Conference Room
- 1 Storage
- Open layout

## Suite 408

- 367 SQFT
- \$35.00 PSF - Fully Serviced
- One Large Room
- Open layout



# 4TH FLOOR-IMAGES

For Lease



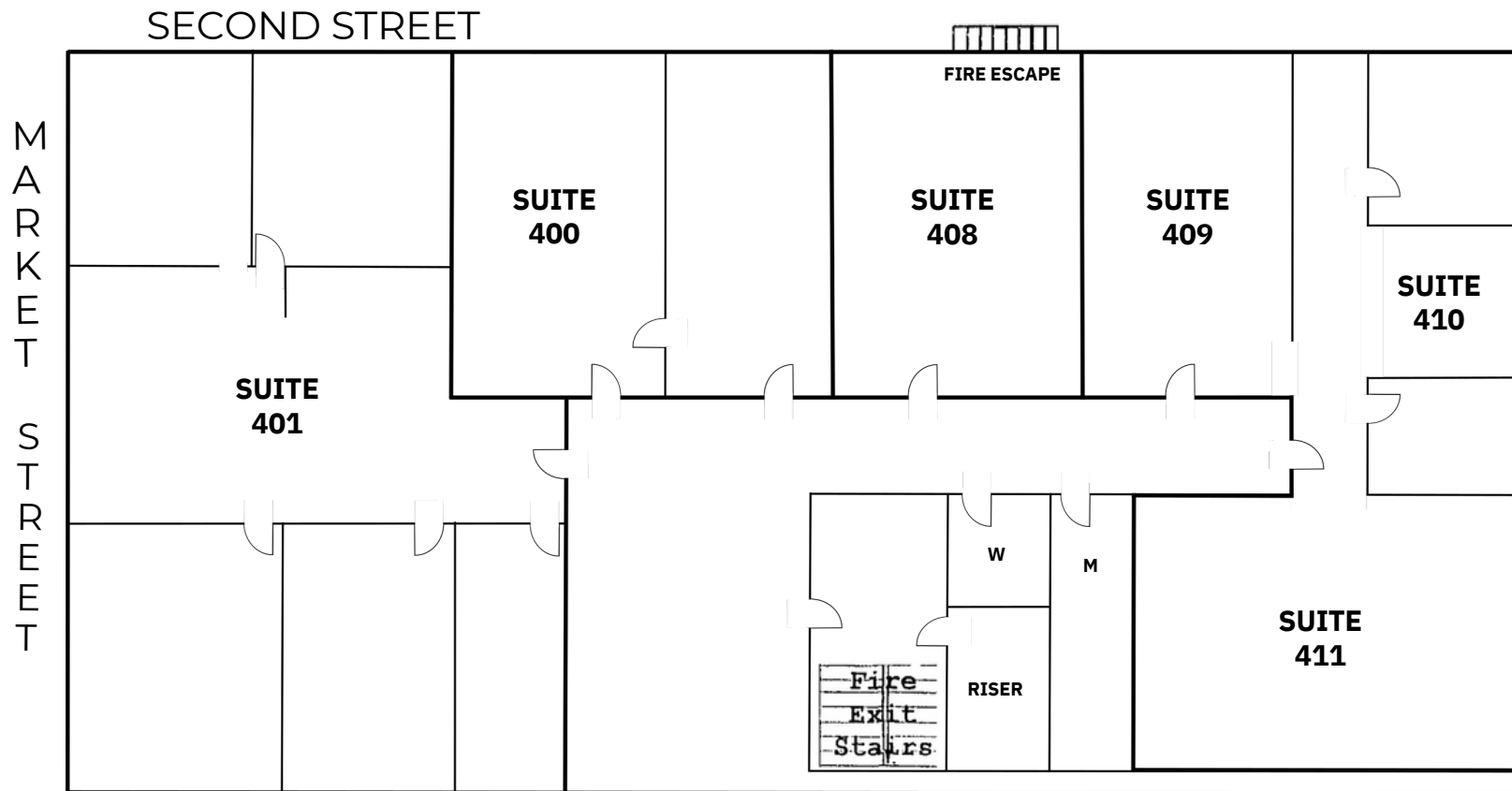
This information has been secured by Starboard CRE from sources believed to be reliable. It is not guaranteed and should be verified before closing any transaction.

**STARBOARD CRE**  
LOCAL • INDEPENDENT • ENTREPRENEURIAL

# 4TH FLOOR – FLOORPLAN

For Lease

## 4th Floor



This information has been secured by Starboard CRE from sources believed to be reliable. It is not guaranteed and should be verified before closing any transaction.



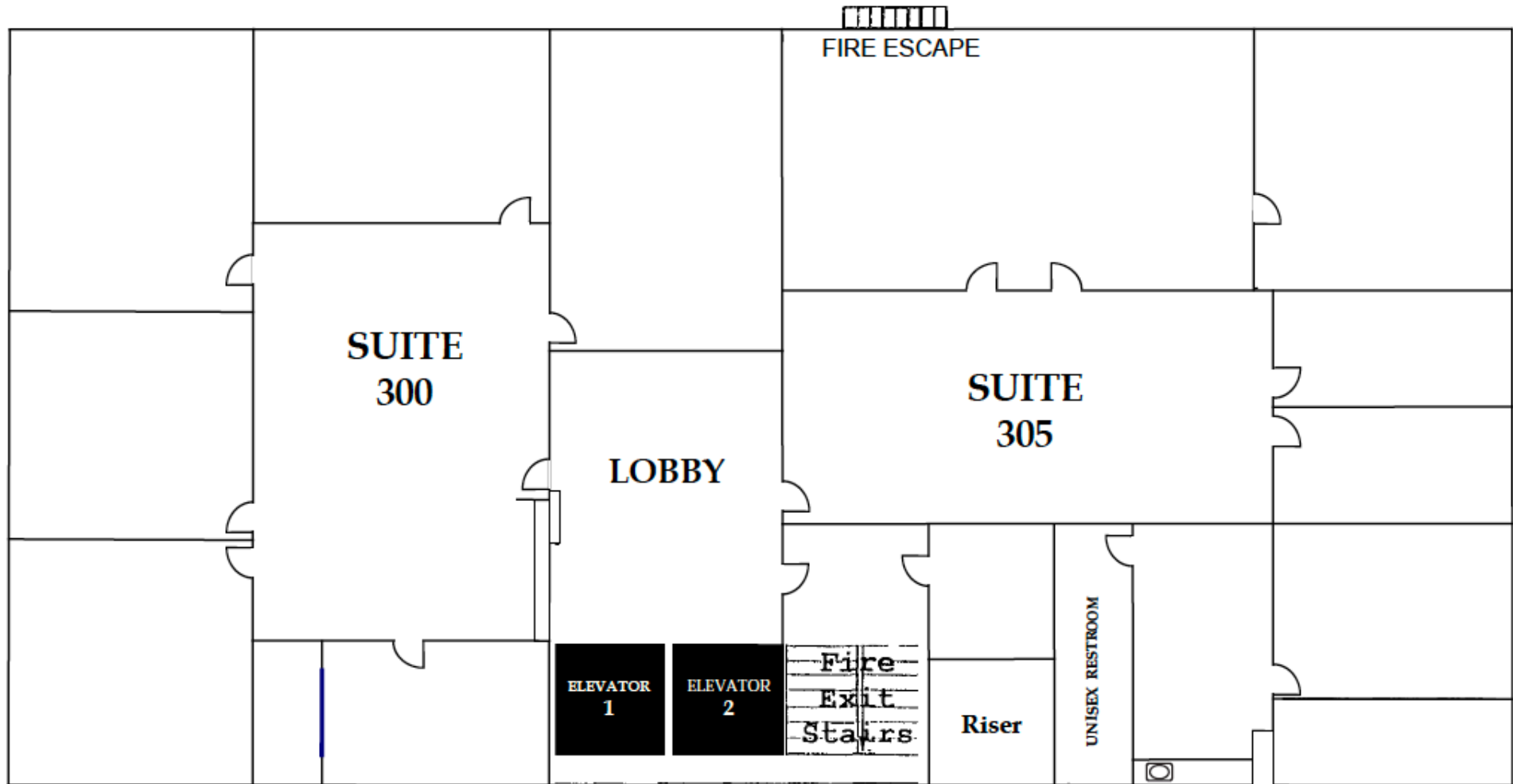
## Suite 300

- 1,467 SQFT
- \$35.00 PSF - Fully Serviced
- 5 Large Private Offices



# 3RD FLOOR – FLOORPLAN

For Lease



This information has been secured by Starboard CRE from sources believed to be reliable. It is not guaranteed and should be verified before closing any transaction.

# AERIAL VIEW

For Lease



This information has been secured by Starboard CRE from sources believed to be reliable. It is not guaranteed and should be verified before closing any transaction.

**STARBOARD CRE**  
LOCAL • INDEPENDENT • ENTREPRENEURIAL



## Hans Hansson

President / Broker of Record  
hans@starboardcre.com  
CELL: 415.517.2589  
CA DRE # 00872902

Call

View Profile



## Craig Hansson

Vice President  
craig@starboardcre.com  
CELL: 415.710.7768  
CA DRE #01841643

Call

View Profile



## Mark Meier

Senior Leasing & Sales Associate  
mark@starboardcre.com  
CELL: 415.299.7042  
BRE # 02047169

Call

View Profile



**STARBOARD CRE**  
LOCAL • INDEPENDENT • ENTREPRENEURIAL

STARBOARDCRE.COM  
OFC. PHONE 415.765.6900  
49 POWELL STREET, SAN FRANCISCO, CA 94102



## Unique Vision

We see what others miss

## Local Market Leader

No one knows Northern  
California like we do

## Full-Service Firm

We do it all

---

Locally based, and technology-forward, our brokers are highly qualified experts backed by a full-service, in-house support team who understand the intricacies of San Francisco real estate. Starboard CRE brings decades of brokerage experience representing over 600 million square feet of space with an aggregate lease value of over 10 billion and investments sold over 3 billion.

**CA DRE# 01103056**

**TCN**  
WORLDWIDE  
REAL ESTATE SERVICES

**AREA**  
ASSOCIATED REALTY OF THE AMERICAS