

605

Market Street

San Francisco CA 94105

TCN
WORLDWIDE
REAL ESTATE SERVICES

For Lease

\$35-\$45 PSF

Craig Hansson
craig@starboardcre.com
415.710.7768

Mark Meier
mark@starboardcre.com
415.299.7042

Hans Hansson
hans@starboardcre.com
415.517.2589



STARBOARD CRE
LOCAL • INDEPENDENT • ENTREPRENEURIAL

Building Summary

Address: 605 Market Street

Property Type: Office

Space: 12 Spaces Available

Listing Price Range: \$35-\$45 PSF

Term: Negotiable

Building Hight: 14 Stories

Fully Serviced

Spaces

14	Suite 1400 ±4,628 SF 14th Floor	
13	Suite 1310 ±1,156 SF 13th Floor	
11	Suite 1107-1109 ± 1,538 SF 11th Floor	
9	Suite 910 ±2,296 SF 9th Floor	
8	Suite 800 ±3,716 SF 8th Floor	
5	Suite 500 ±1,489 SF 5th Floor	Suite 503 ±582 SF 5th Floor

Highlights



Central Financial Hub

Adjacent to top financial and tech firms.



Excellent Transit Connections

Nearby public transit, half block from Montgomery BART.



Flexible Space Options

Provides flexible full or partial floor leasing.



Rich Amenities Nearby

Close to many dining and social spots.



Stunning views

Stunning downtown views.



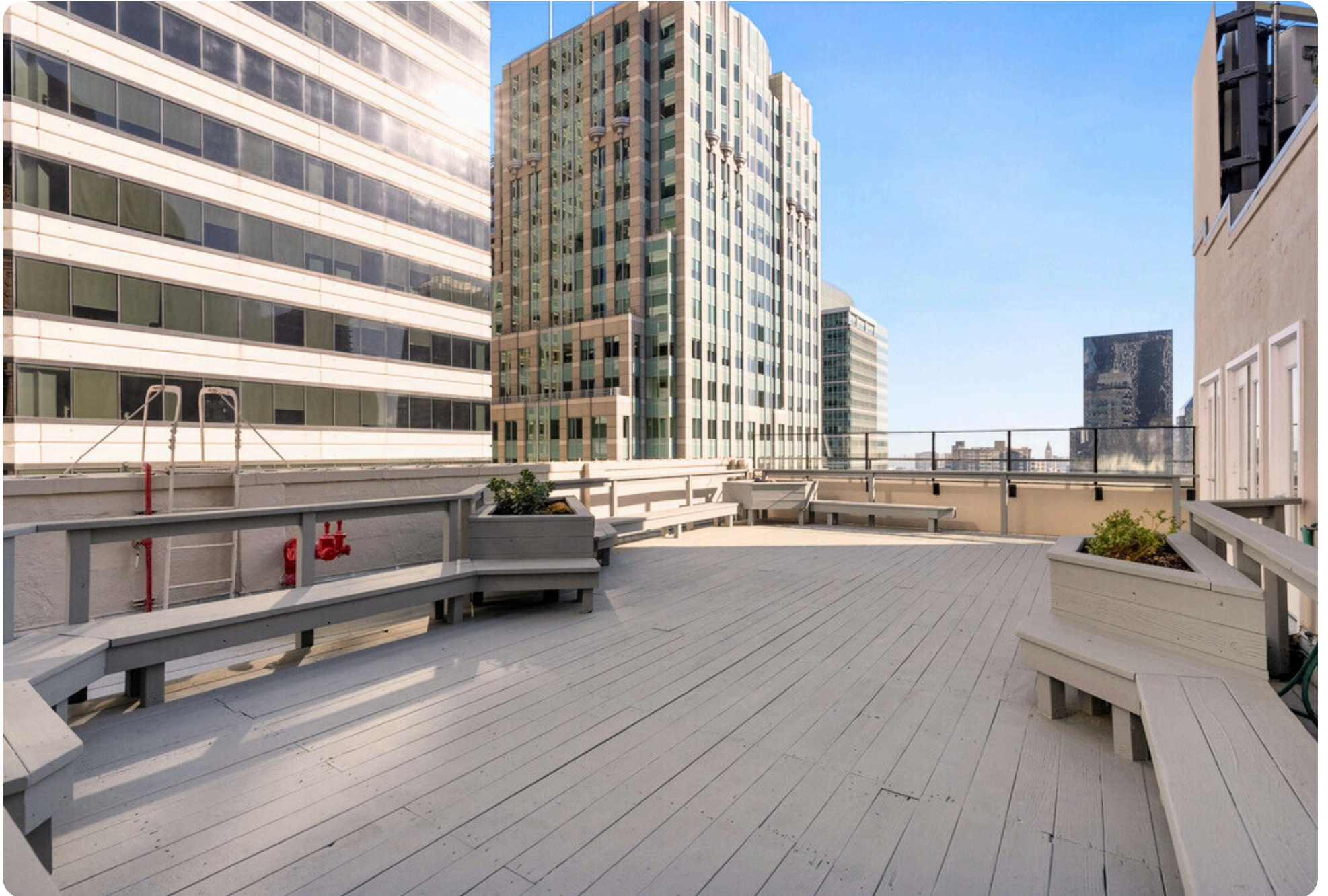
14th Floor

Suite 1400

- 4,628 SQFT
- \$45 PSF – Fully Serviced
- Full floor
- Penthouse suite with an exclusive outside deck overlooking 2nd Street
- Multiple sides of natural lights
- Open Area
- 13 Private Offices
- Kitchenette



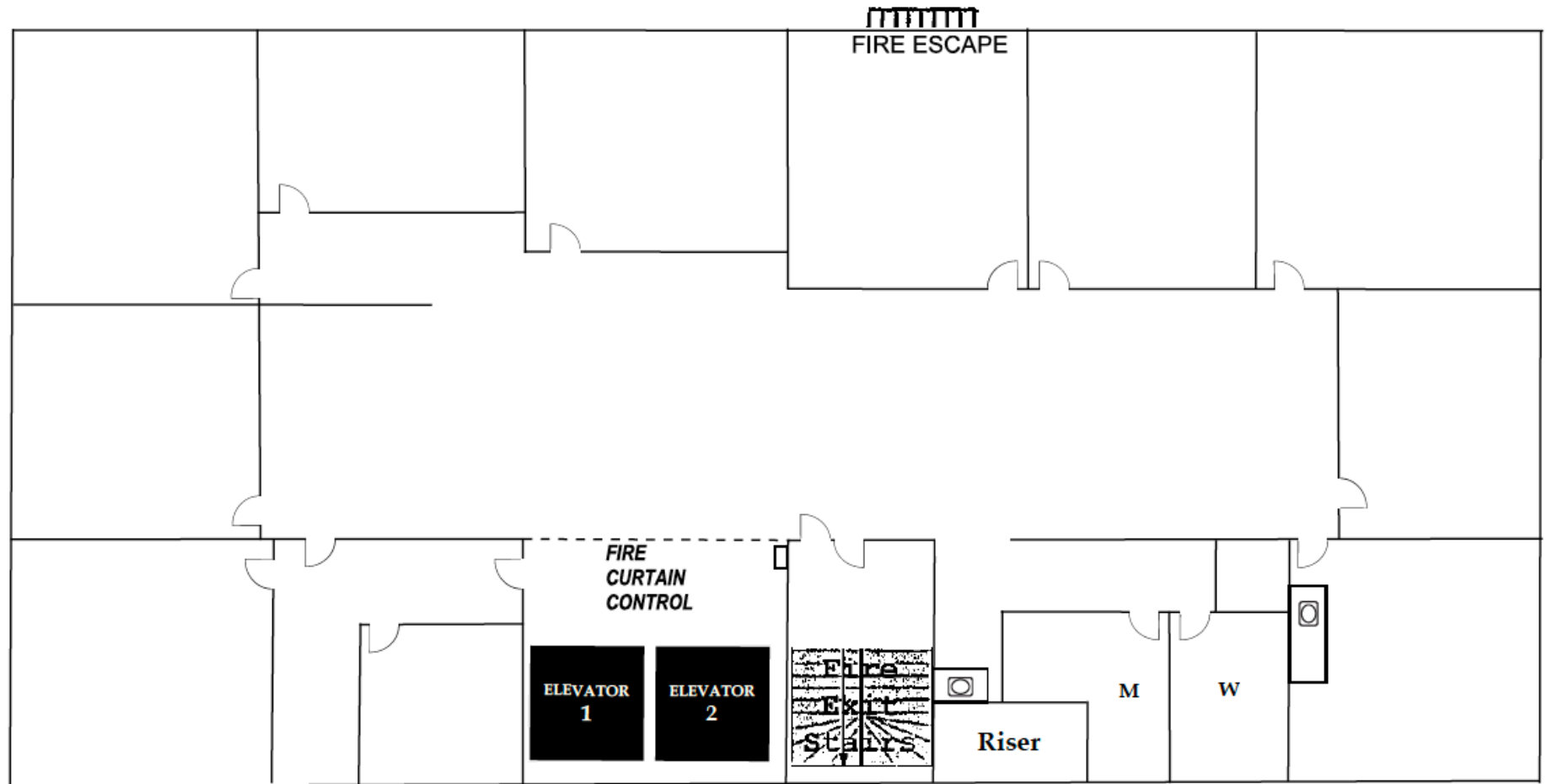
14th Floor | Images



14th Floor | Images



14th Floor | Floorplan



13th Floor

Suite 1310

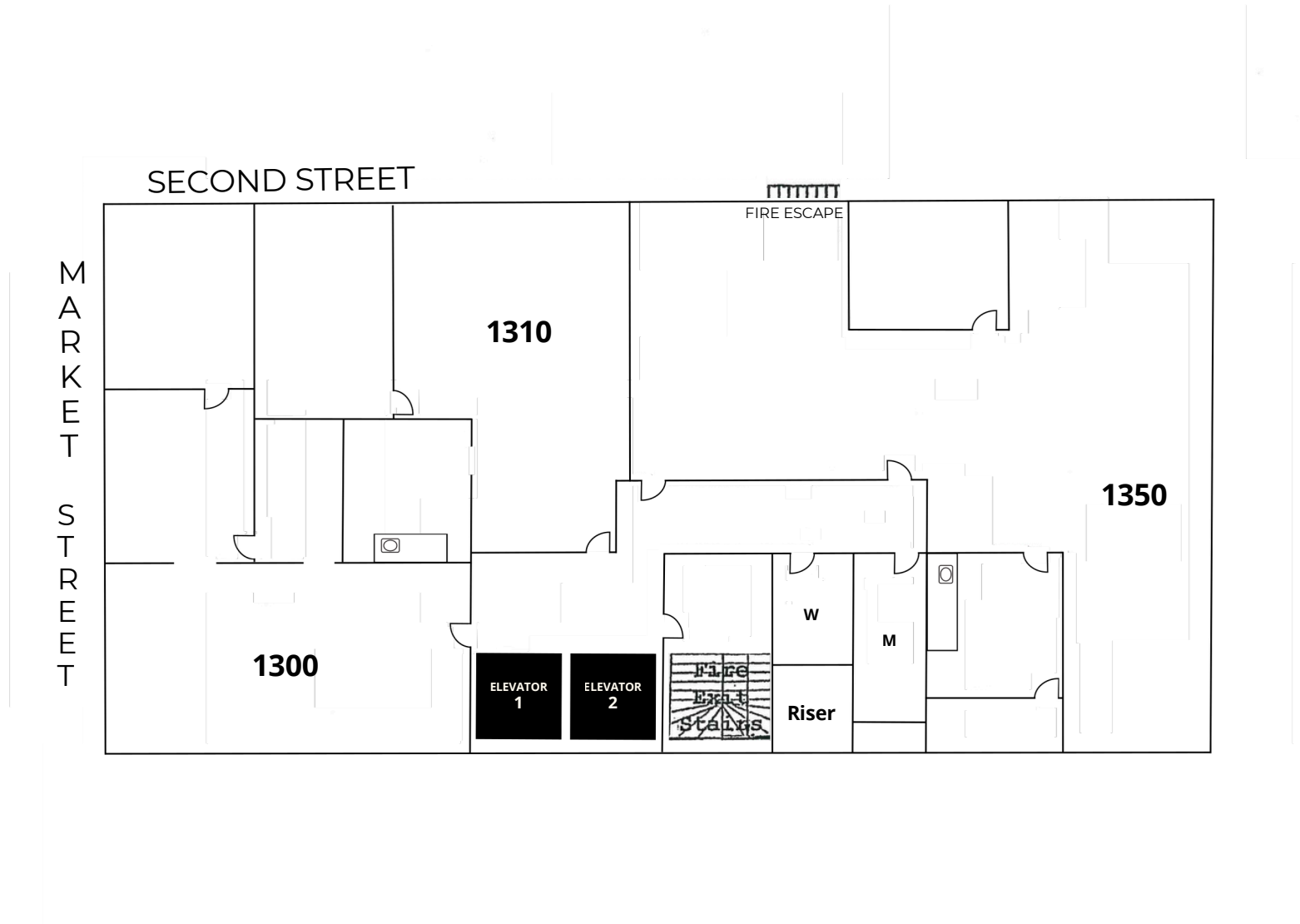
- 1,156 SQFT
- \$35-\$45 PSF - Fully Serviced
- Open layout
- Great natural light
- One private office
- One kitchenette
- New paint
- New flooring



13th Floor | Images



13th Floor | Floorplan



11th Floor

Suite 1107-1109

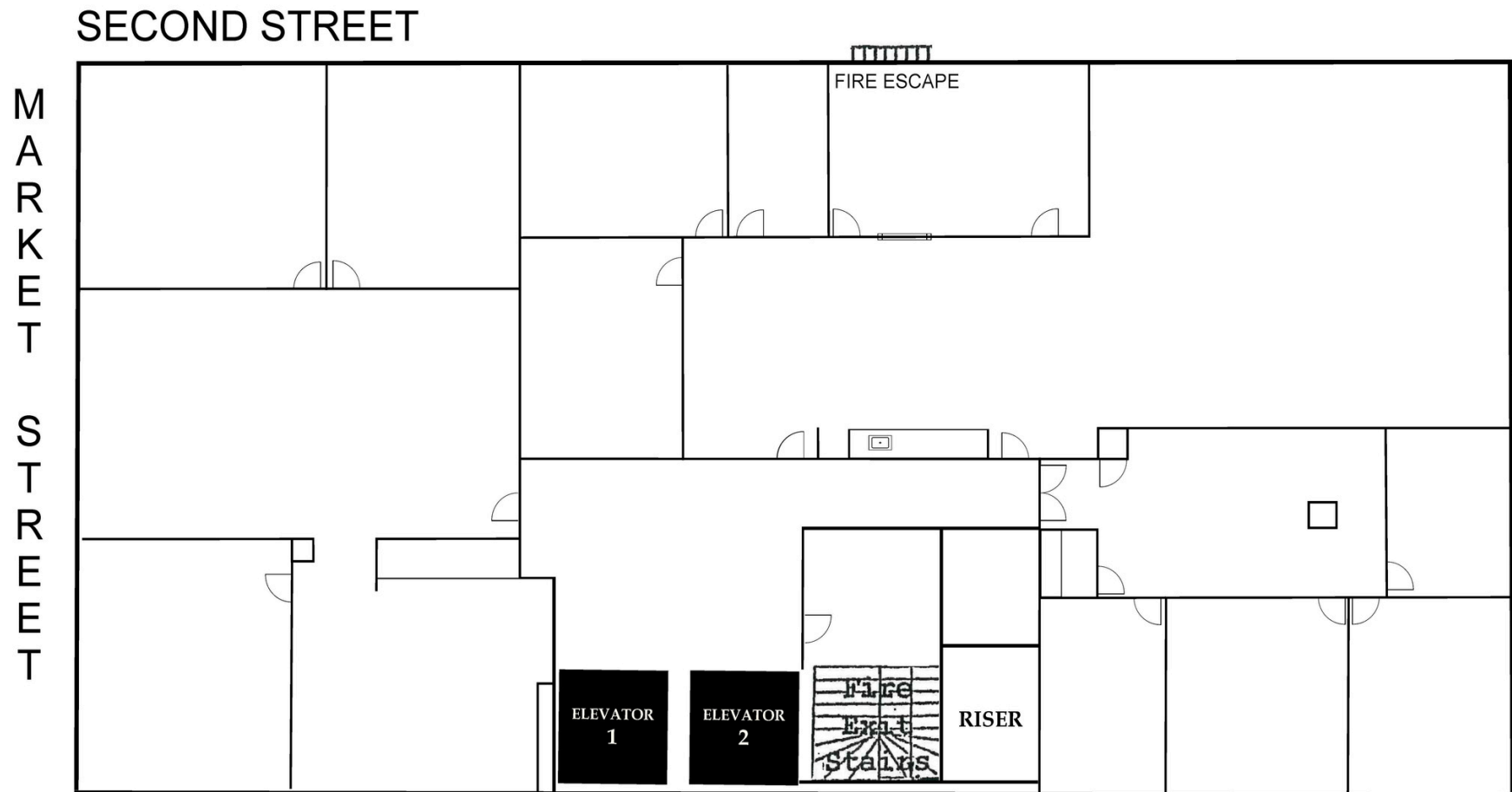
- ± 1,538 SQFT
- Open layout
- One conference room
- Three private offices
- kitchenette



11th Floor | Images



11th Floor | Floorplan



9th Floor

Suite 910

- ± 2,296 SQFT
- Open layout
- 1 conf room
- 2 offices
- Kitchenette
- 2 restrooms

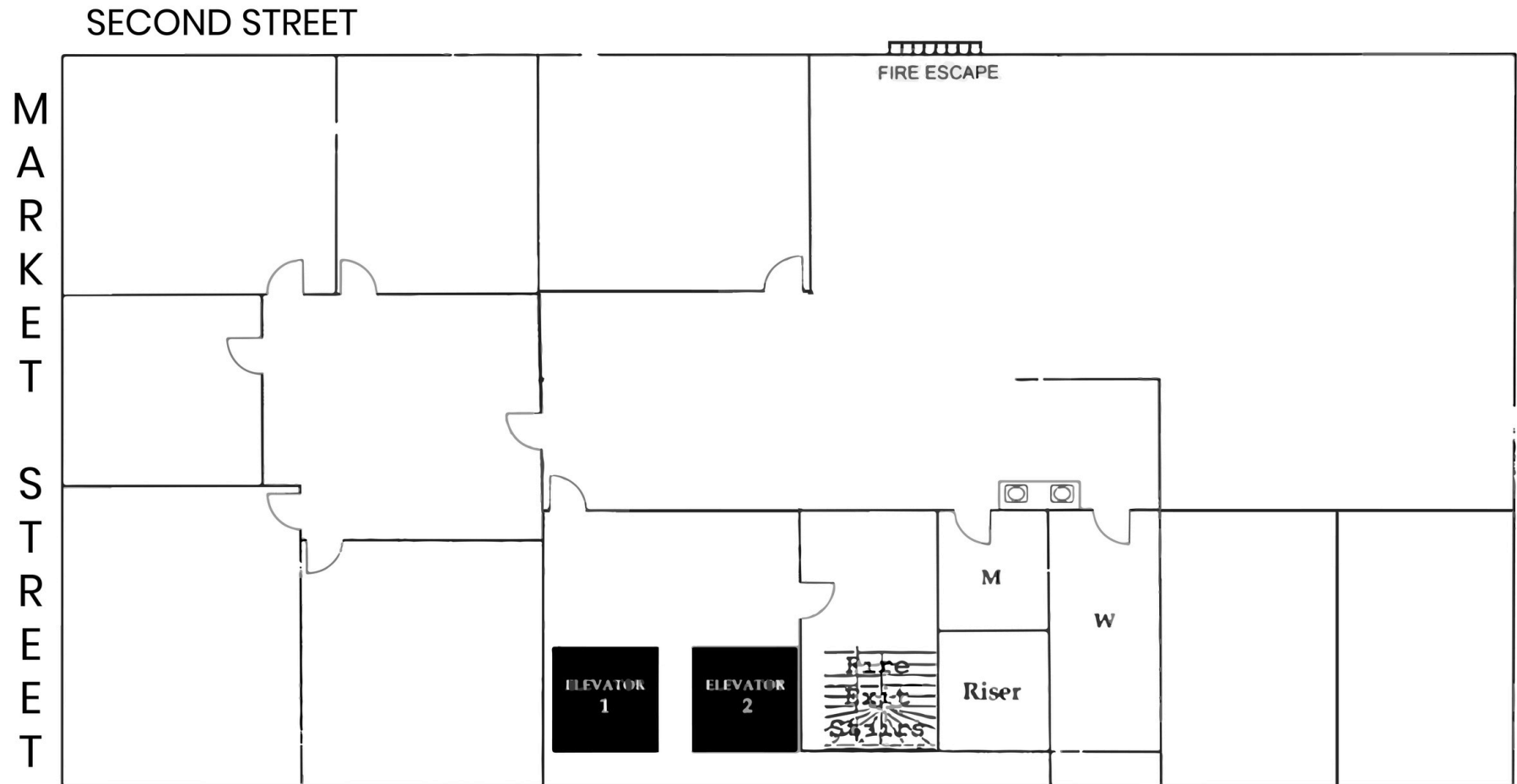


9th Floor | Images



9th Floor | Floorplan

9th Floor



8th Floor

Suite 800

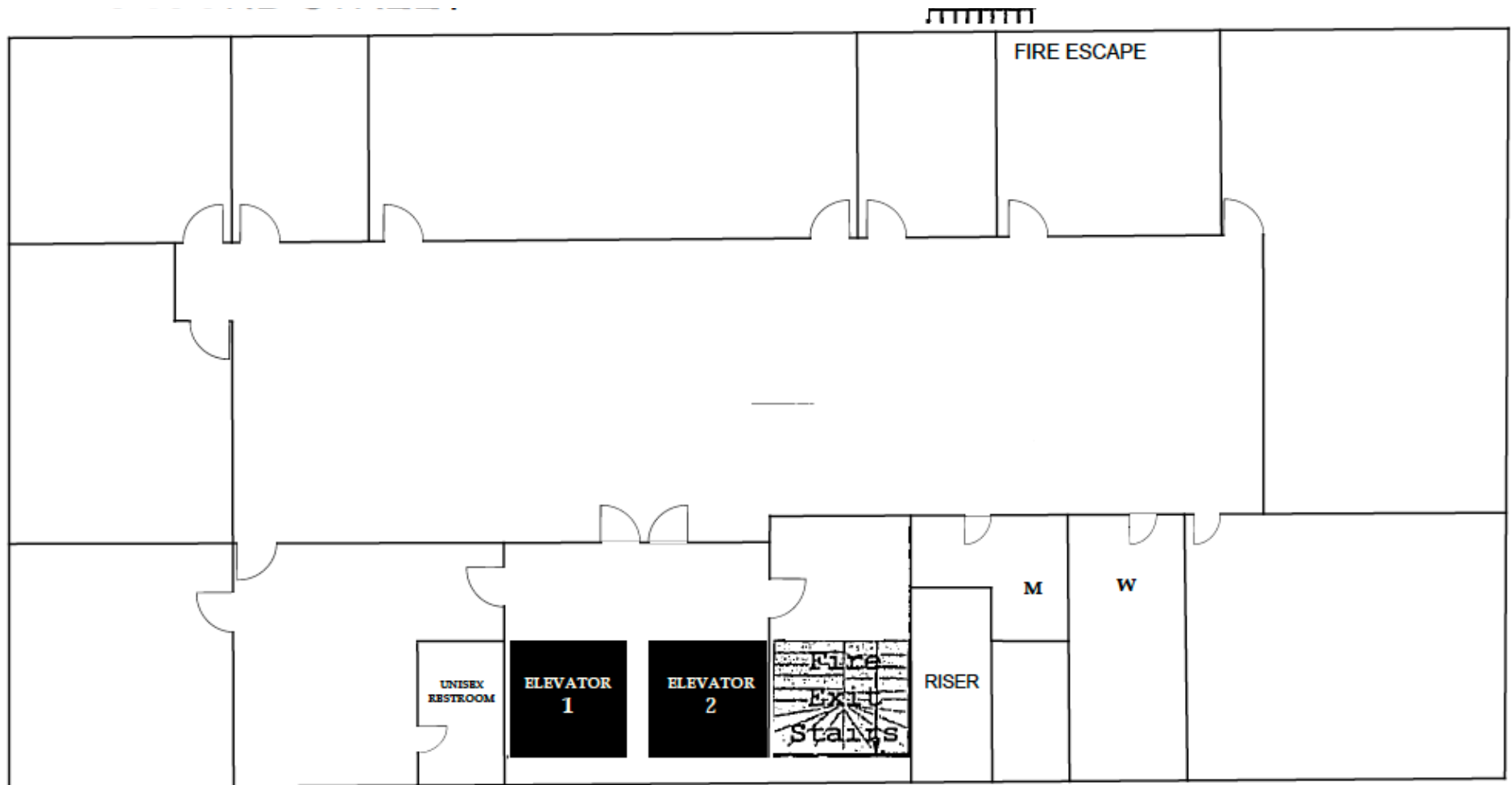
- ± 3,716 SQFT
- \$35-\$45 PSF - Fully Serviced
- Full floor
- Recently completed spec suite
- Open layout
- Nine private offices
- One Kitchenette
- Two restrooms



8th Floor | Images



8th Floor | Floorplan



5th Floor

Suite 500

- ± 1,489 sq ft
- Open layout
- Two private rooms
- Kitchenette
- Fully furnished

Suite 503

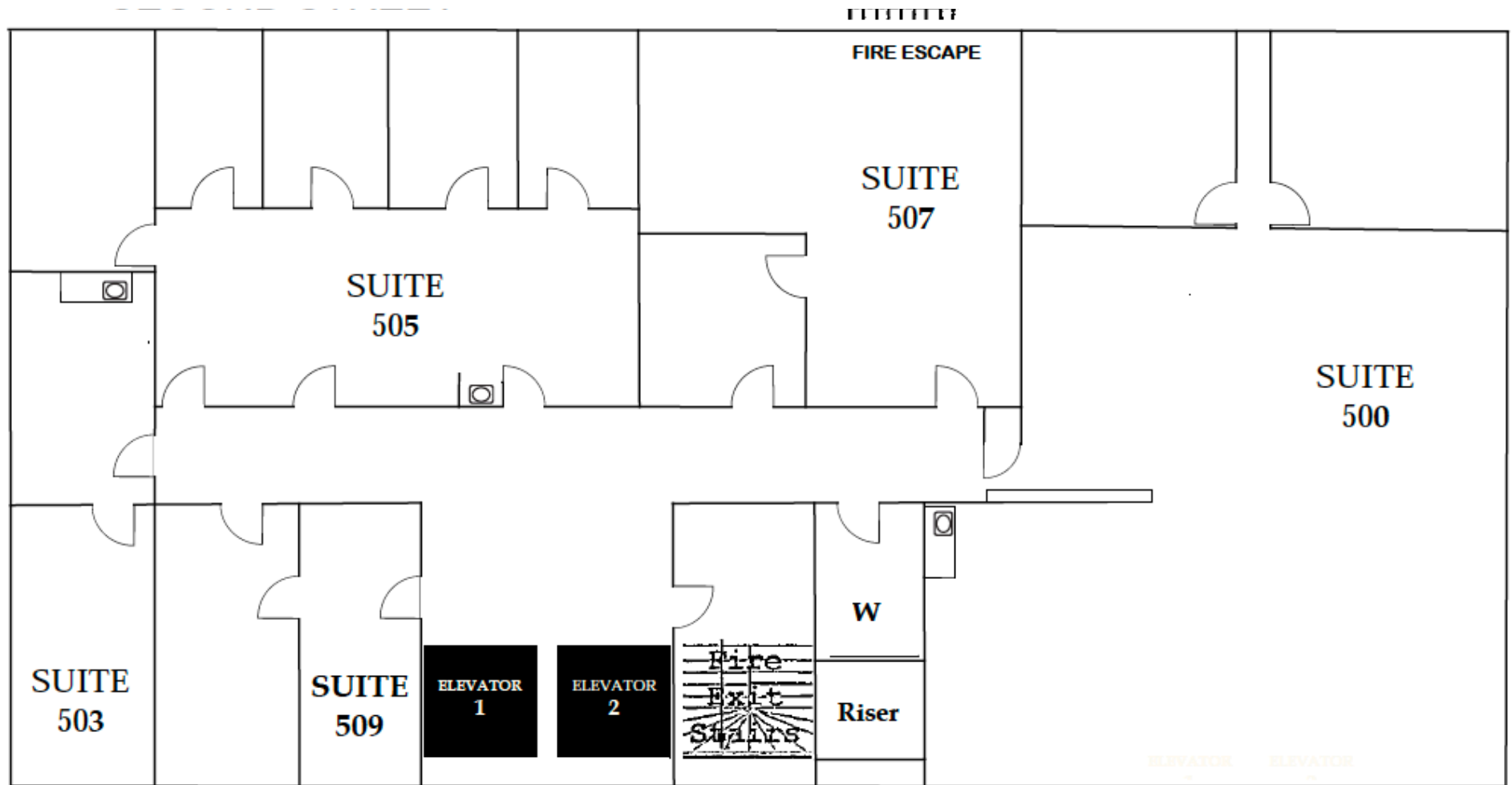
- ± 582 SQFT
- \$35-\$45 PSF - Fully Serviced
- Recently renovated
- Open area
- One private office
- Kitchenette



5th Floor | Images



5th Floor | Floorplan



Aerial View



Team



Craig Hansson

Vice President
craig@starboardcre.com
CELL: 415.710.7768
CA DRE #01841643

Call

View Profile



Mark Meier

Senior Leasing & Sales Associate
mark@starboardcre.com
CELL: 415.299.7042
CA DRE # 02047169

Call

View Profile



Hans Hansson

President / Broker of Record
hans@starboardcre.com
CELL: 415.517.2589
CA DRE # 00872902

Call

View Profile



STARBOARD CRE
LOCAL • INDEPENDENT • ENTREPRENEURIAL



STARBOARD CRE
LOCAL • INDEPENDENT • ENTREPRENEURIAL

STARBOARDCRE.COM
OFC. PHONE 415.765.6900
49 POWELL STREET, SAN FRANCISCO, CA 94102



Unique Vision

We see what others miss

Local Market Leader

No one knows Northern
California like we do

Full-Service Firm

We do it all

Locally based, and technology-forward, our brokers are highly qualified experts backed by a full-service, in-house support team who understand the intricacies of San Francisco real estate. Starboard CRE brings decades of brokerage experience representing over 600 million square feet of space with an aggregate lease value of over 10 billion and investments sold over 3 billion.

CA DRE# 01103056

TCN
WORLDWIDE
REAL ESTATE SERVICES

AREA
ASSOCIATED REALTY OF THE AMERICAS