



STARBOARD CRE
LOCAL • INDEPENDENT • ENTREPRENEURIAL

For Lease

1530 Noriega St.

San Francisco, CA 94122

2nd Floor

Craig Hansson

CELL: 415.710.7768

Hans Hansson

CELL: 415.517.2589

[View Online](#)



STARBOARDCRE.COM
49 POWELL STREET, SAN FRANCISCO, CA 94102

Building: 1530 Noriega St, San Francisco.
Space: 2nd Floor
Type: Office
Price: Negotiable

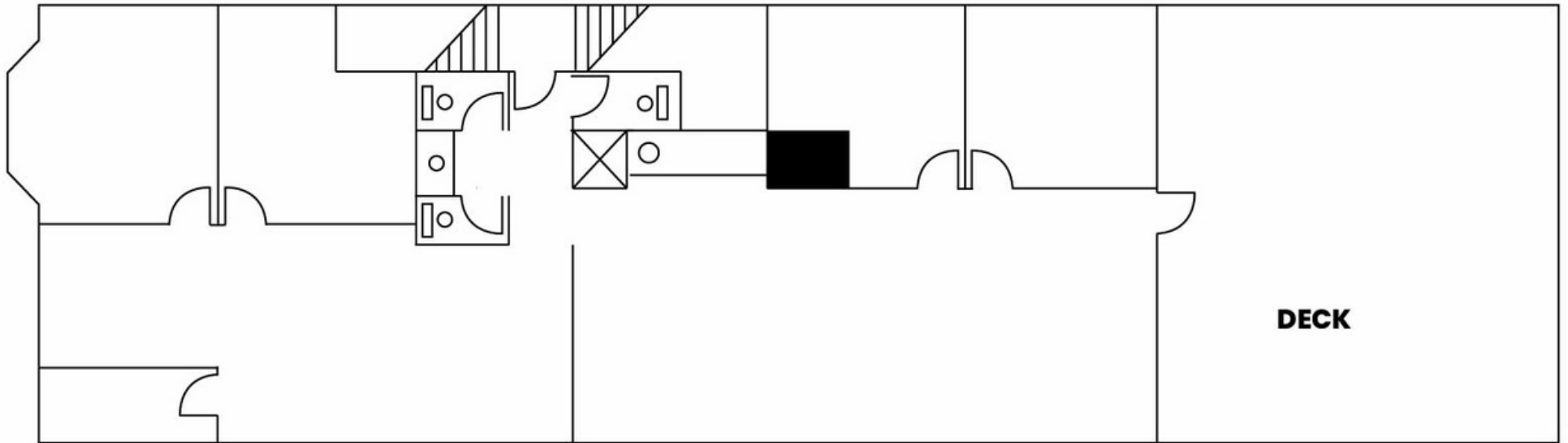
Discover a workspace that seamlessly blends productivity and comfort. Featuring two private offices, a flexible open area for collaboration, a well-equipped kitchen, and a bathroom with a rejuvenating shower, this space caters to all your professional and personal needs.

- Great Views
- Excellent Light





This information has been secured by Starboard CRE from sources believed to be reliable. It is not guaranteed and should be verified before closing any transaction.





Craig Hansson

Vice President
craig@starboardcre.com
CELL: 415.710.7768
CA DRE #01841643

Call

View Profile



Hans Hansson

President / Broker of Record
hans@starboardcre.com
CELL: 415.517.2589
CA DRE # 00872902

Call

View Profile



STARBOARD CRE
LOCAL • INDEPENDENT • ENTREPRENEURIAL

STARBOARDCRE.COM
OFC. PHONE 415.765.6900
49 POWELL STREET, SAN FRANCISCO, CA 94102



Unique Vision

We see what others miss

Local Market Leader

No one knows Northern
California like we do

Full-Service Firm

We do it all

Locally based, and technology-forward, our brokers are highly qualified experts backed by a full-service, in-house support team who understand the intricacies of San Francisco real estate. Starboard CRE brings decades of brokerage experience representing over 600 million square feet of space with an aggregate lease value of over 10 billion and investments sold over 3 billion.

CA DRE# 01103056

