

# FOR LEASE

## 3634 Sacramento St

San Francisco, CA 94118

Office/Retail opportunity in the highly desirable block on Sacramento Street

### Hans Hansson

[hans@starboardcre.com](mailto:hans@starboardcre.com)

CELL: 415.517.2589

### Mark Meier

[mark@starboardcre.com](mailto:mark@starboardcre.com)

CELL: 415.299.7042



**STARBOARD CRE**  
LOCAL • INDEPENDENT • ENTREPRENEURIAL

STARBOARDCRE.COM  
OFC. PHONE 415.765.6900  
49 POWELL STREET, SAN FRANCISCO, CA 94102



Well located Presidio Heights office space in a classic Victorian building. Rare opportunity to locate your office on Sacramento St, right next to Spruce Restaurant and a block away from the amenities of Laurel Village.

**Ideal for CPA, psychiatric, and professional offices.**

## HIGHLIGHTS

- 1,400 SF
- Asking \$3.50/SF/Mo IG
- Entire 1st floor
- Four private offices
- Kitchenette
- Great natural light
- One restroom
- Outdoor deck
- Parking can be made available

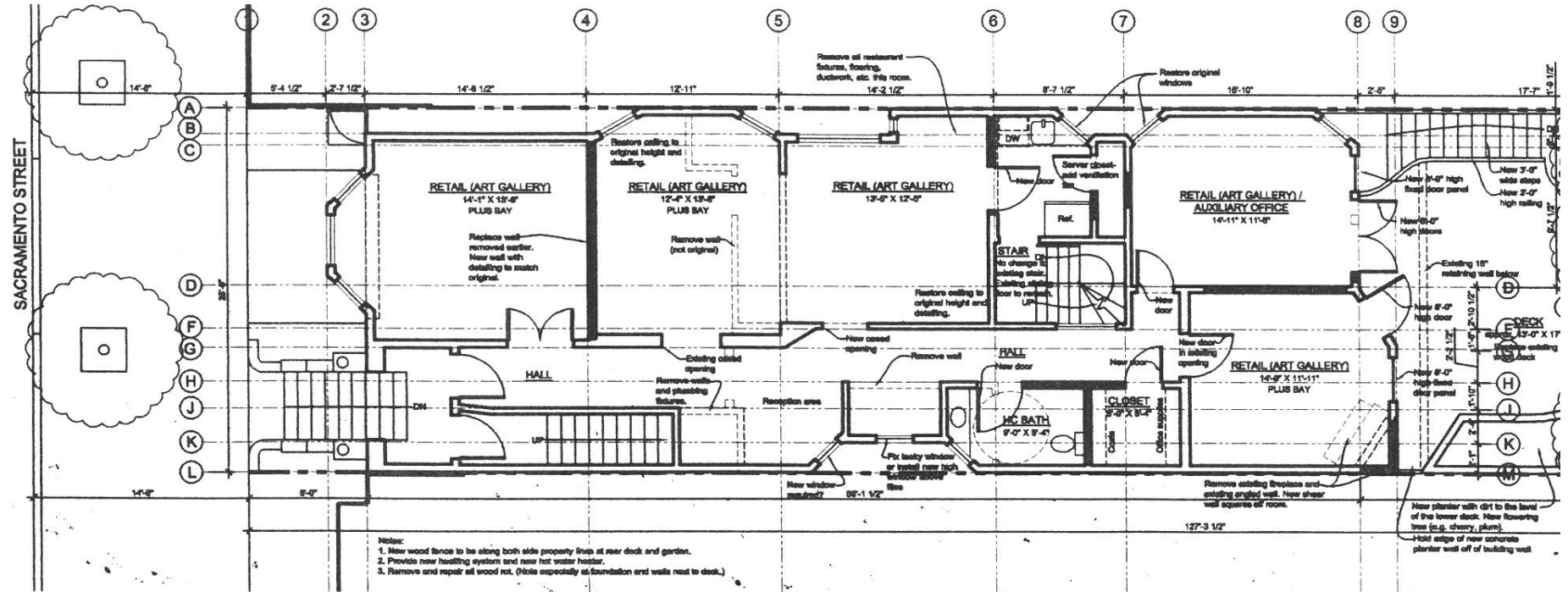
















**Hans Hansson**

President / Broker of Record  
hans@starboardcre.com  
CELL: 415.517.2589  
OFC. PHONE: 415.765.6900  
BRE # 00872902

[View Online](#)



**Mark Meier**

Senior Leasing & Sales Associate  
mark@starboardcre.com  
CELL: 415.299.7042  
OFC. PHONE: 415.299.7042  
BRE # 02047169

[View Online](#)





**STARBOARD CRE**  
LOCAL • INDEPENDENT • ENTREPRENEURIAL

STARBOARDCRE.COM

OFC. PHONE 415.765.6900

49 POWELL STREET, SAN FRANCISCO, CA 94102



The largest,  
independently -owned  
commercial real estate  
firm in San Francisco.

## Unique Vision

We see what others miss

## Local Market Leader

No one knows Northern  
California like we do

## Full Service Firm

We do it all

Locally based, technology forward, our brokers are highly qualified experts backed by a full-service, in-house support team who understand the intricacies of San Francisco real estate. Starboard CRE brings decades of brokerage experience representing over 600 million square feet of space with an aggregate lease value of over 10 billion and investments sold over 3 billion.

BRE# 01103056

