

FOR LEASE

2nd & 3rd Floors Available
Creative Office Space

1841 Market St.

San Francisco, CA 94103

[View Online](#)



STARBOARD CRE
LOCAL • INDEPENDENT • ENTREPRENEURIAL

STARBOARDCRE.COM
OFC. PHONE 415.765.6900
49 POWELL STREET, SAN FRANCISCO, CA 94102

Minutes from the Central Highway, Octavia Blvd., Lower Haight St., and Hayes Valley neighborhood. 1841 Market is surrounded by new housing development, Venn on Market, and across from Linea Condominiums, and a short walk to Duboce Triangle.

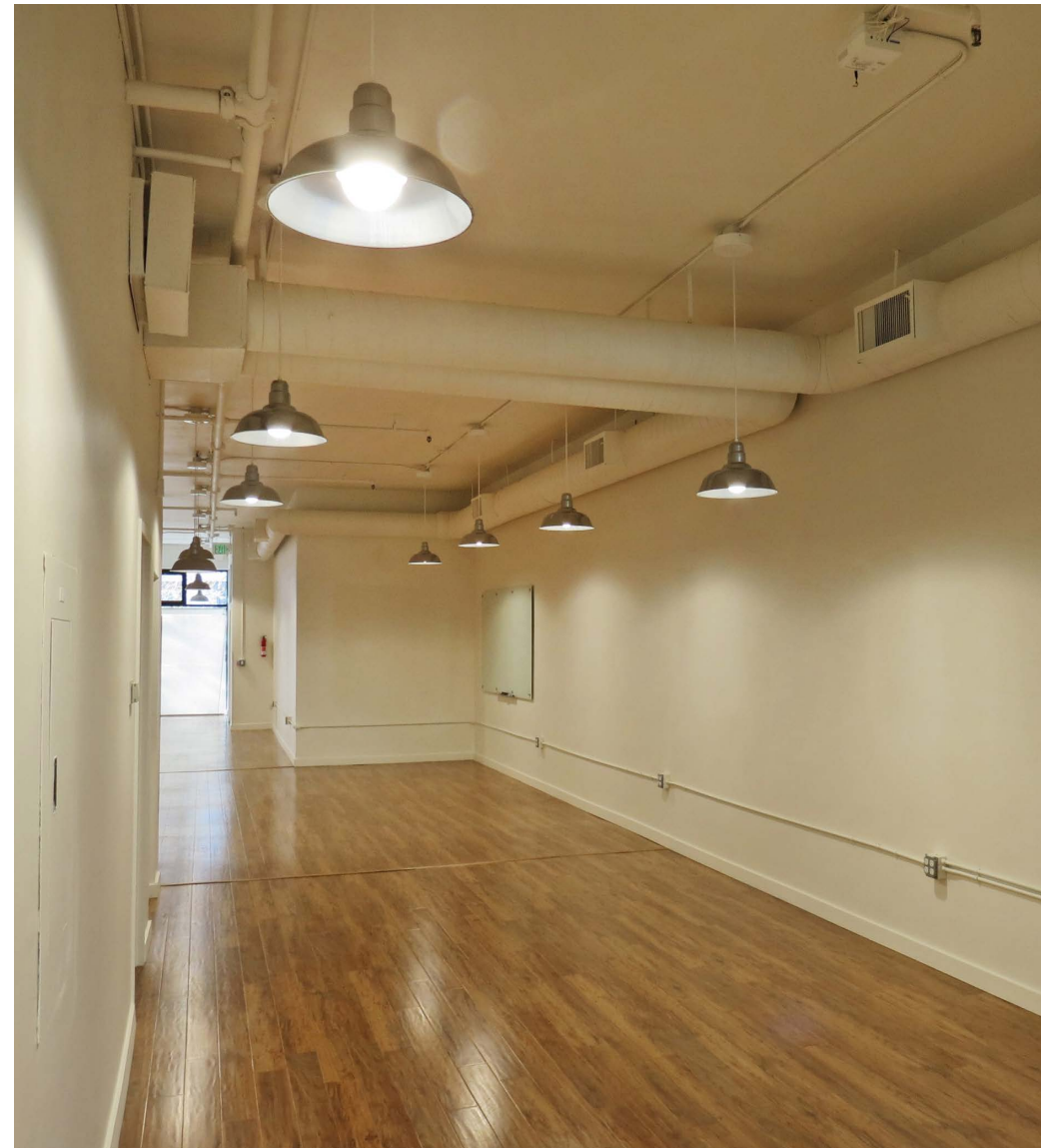
This area has seen a burst of growth in the last 5 years, between the housing and new businesses moving into the area, and just a few blocks south is SOMA District with all its new dynamic businesses and housing.



Floor / Suite No.	2nd Floor
Square Ft.	± 2,000
Rate	NEGOTIABLE
Term	6 Months to 5 years (Industrial Gross)

HIGHLIGHTS

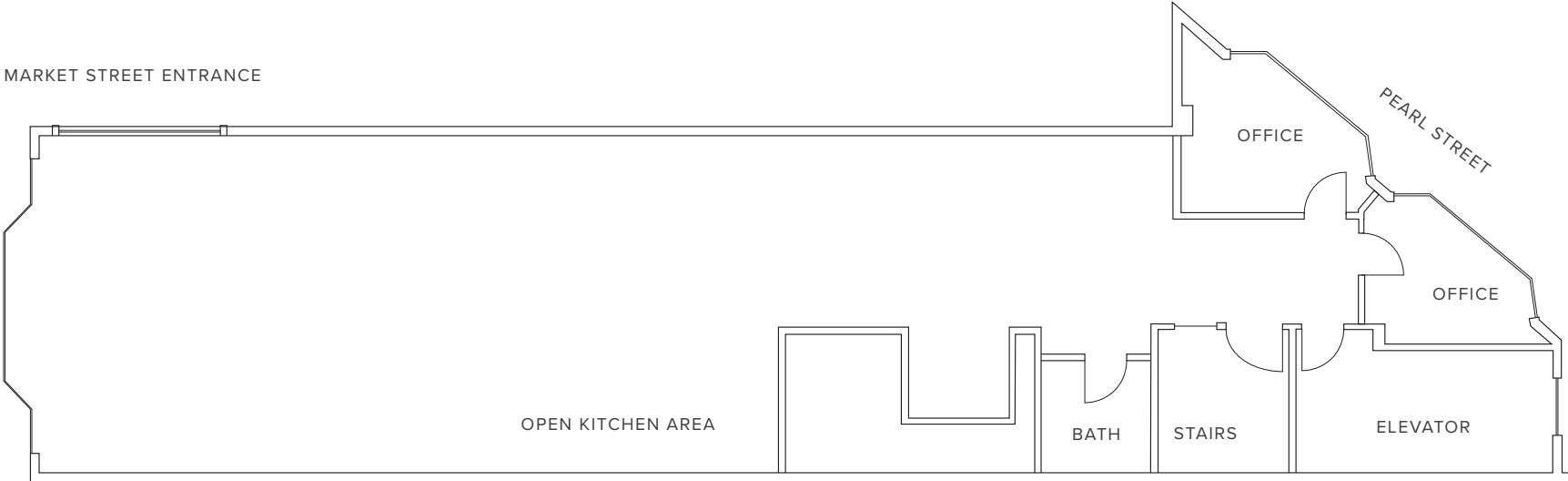
- Large open layout with contemporary fixtures and hardwood floors
- Elevator access via Pearl Street
- Large show windows with motorized blinds facing Market Street
- 2 private offices with dry-erase glass boards
- 1 ADA bathroom
- Storage room
- Kitchenette with stainless steel appliances and quartz countertop



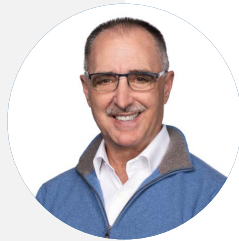


2ND FLOOR – FLOORPLAN

FOR LEASE







Hans Hansson
President / Broker of Record
hans@starboardcre.com
CELL: 415.517.2589
OFC. PHONE: 415.765.6900
BRE # 00872902



Craig Hansson
Vice President
craig@starboardcre.com
CELL: 415.710.7768
OFC. PHONE: 415.765.6900
BRE # 01841643





STARBOARD CRE
LOCAL • INDEPENDENT • ENTREPRENEURIAL

STARBOARDCRE.COM
OFC. PHONE 415.765.6900
49 POWELL STREET, SAN FRANCISCO, CA 94102



The largest, independently -owned commercial real estate firm in San Francisco.

Unique Vision

We see what others miss

Local Market Leader

No one knows Northern California like we do

Full Service Firm

We do it all

Locally based, technology forward, our brokers are highly qualified experts backed by a full-service, in-house support team who understand the intricacies of San Francisco real estate. Starboard CRE brings decades of brokerage experience representing over 600 million square feet of space with an aggregate lease value of over 10 billion and investments sold over 3 billion.

BRE# 01103056

