



STARBOARD CRE
LOCAL • INDEPENDENT • ENTREPRENEURIAL

For Lease

111 New Montgomery St. SAN FRANCISCO, CA 94105

Full Floor Opportunity
4,281 SF

Hans Hansson
415.517.2589

Craig Hansson
415.710.7768

Mark Meier
415.299.7042



STARBOARDCRE.COM
49 POWELL STREET, SAN FRANCISCO, CA 94102

Building: 111 New Montgomery Street
Rate: low 30's IG
Available Floor: 3rd floor
Term: 1 -5 Years
Size: ± 4,281 SF
Property Type: Creative Office Space

111 New Montgomery is a boutique office building well situated in the South Financial District. Within two blocks from Montgomery BART, Transbay Terminal and Moscone Center. This building offers full floor opportunities with great natural light, Full HVAC and flexible lease terms.

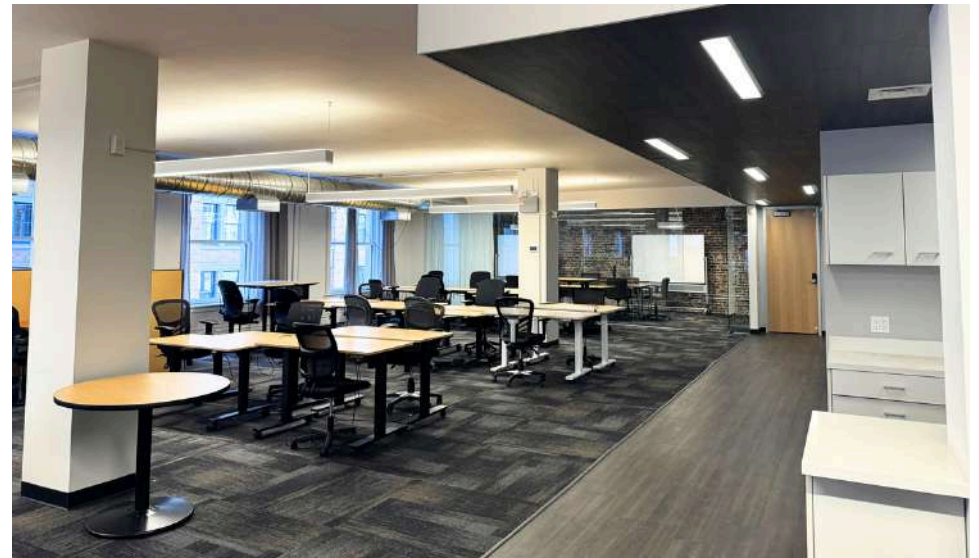
- Good mix of open and private offices
- Full floor, excellent window line
- Kitchenette
- Bathrooms
- Full HVAC
- Blocks from Bart and public transportation



3rd floor

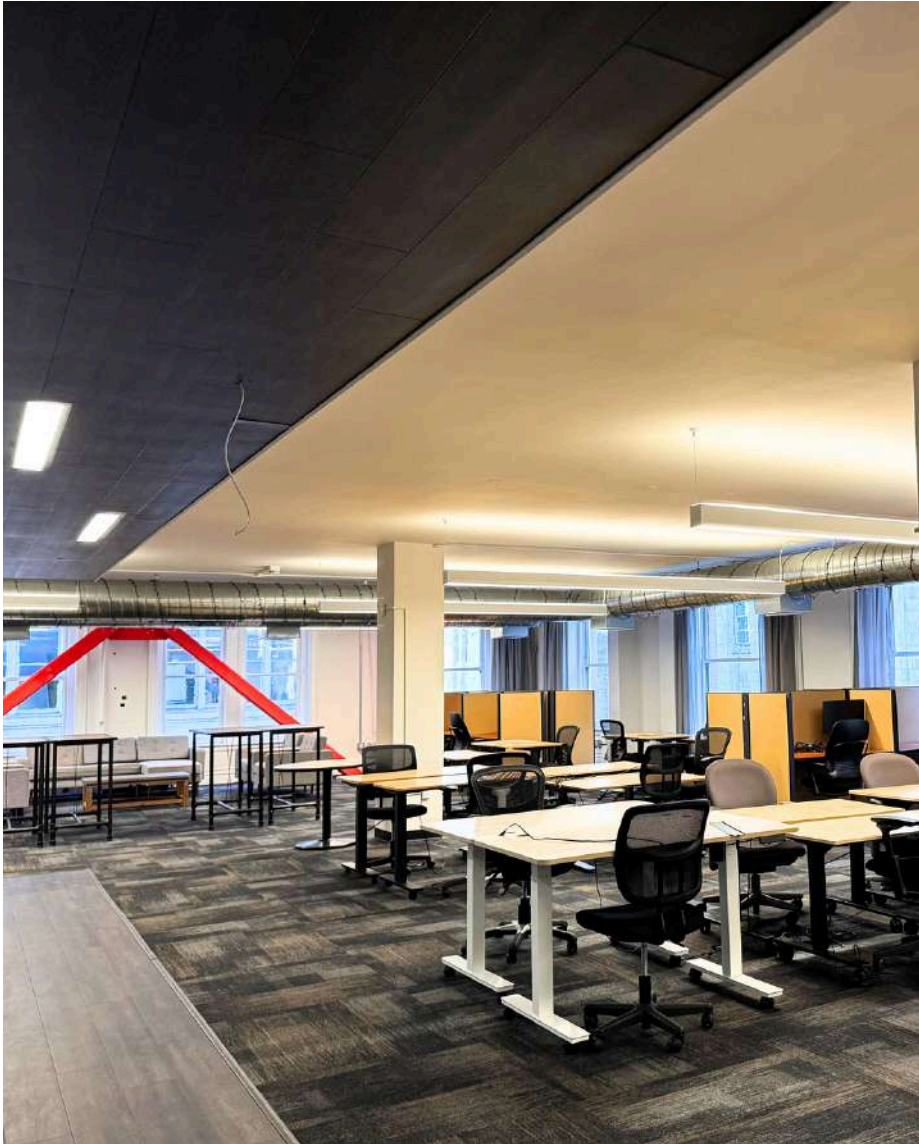
- ± 4,281 SF
- Open layout
- One conference room
- Two private rooms
- Kitchenette
- Two Restrooms
- fully furnished

[View Matterport](#)



3RD FLOOR – OVERVIEW

For Lease

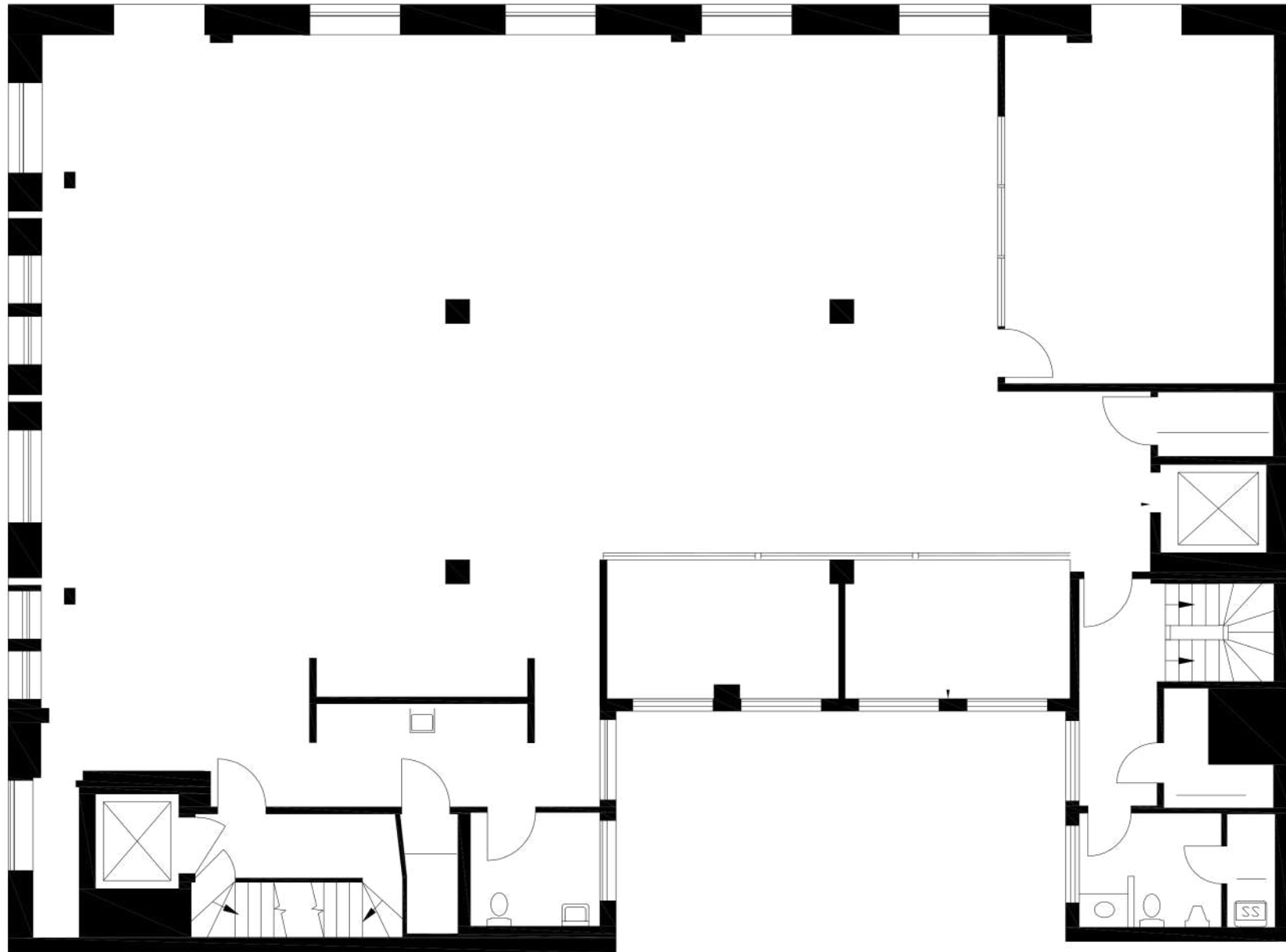


This information has been secured by Starboard CRE from sources believed to be reliable. It is not guaranteed and should be verified before closing any transaction.

STARBOARD CRE
LOCAL • INDEPENDENT • ENTREPRENEURIAL

3RD FLOOR – FLOOR PLAN

For Lease



This information has been secured by Starboard CRE from sources believed to be reliable. It is not guaranteed and should be verified before closing any transaction.

STARBOARD CRE
LOCAL • INDEPENDENT • ENTREPRENEURIAL



Hans Hansson

President / Broker of Record
hans@starboardcre.com
CELL: 415.517.2589
DRE # 00872902

[Call](#)[View Profile](#)

Craig Hansson

Vice President
craig@starboardcre.com
CELL: 415.710.7768
DRE # 01841643

[Call](#)[View Profile](#)

Mark Meier

Senior Leasing & Sales Associate
mark@starboardcre.com
CELL: 415.299.7042
DRE # 02047169

[Call](#)[View Profile](#)



STARBOARD CRE
LOCAL • INDEPENDENT • ENTREPRENEURIAL

STARBOARDCRE.COM
OFC. PHONE 415.765.6900

49 POWELL STREET, SAN FRANCISCO, CA 94102



Unique Vision
We see what others miss

Local Market Leader
No one knows Northern
California like we do

Full-Service Firm
We do it all

Locally based, and technology-forward, our brokers are highly qualified experts backed by a full-service, in-house support team who understand the intricacies of San Francisco real estate. Starboard CRE brings decades of brokerage experience representing over 600 million square feet of space with an aggregate lease value of over 10 billion and investments sold over 3 billion.

CA DRE# 01103056

TCN
WORLDWIDE
REAL ESTATE SERVICES

AREA
ASSOCIATED REALTY OF THE AMERICAS