

LEASE

380 Brannan St.

San Francisco, CA 94107

Spectacular Standalone
Brick and Timber Building
in the Heart of SOMA

[View Online](#)



STARBOARD CRE
LOCAL • INDEPENDENT • ENTREPRENEURIAL

STARBOARDCRE.COM
OFC. PHONE 415.765.6900
49 POWELL STREET, SAN FRANCISCO, CA 94102

380 BRANNAN ST.

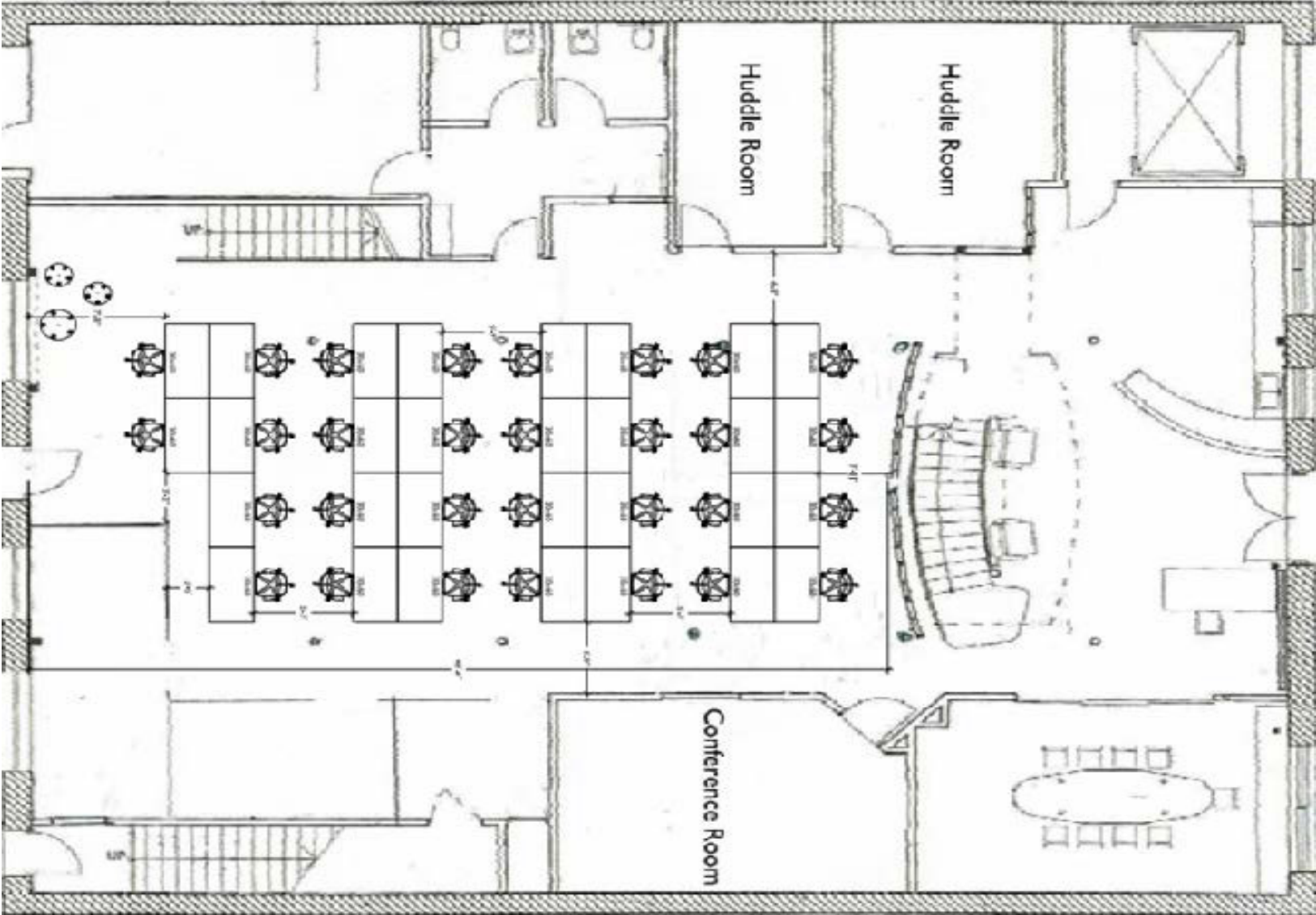
Size	11,560 SF
Term	3 - 5 Years
Space Type	Office
Rate	Negotiable

HIGHLIGHTS

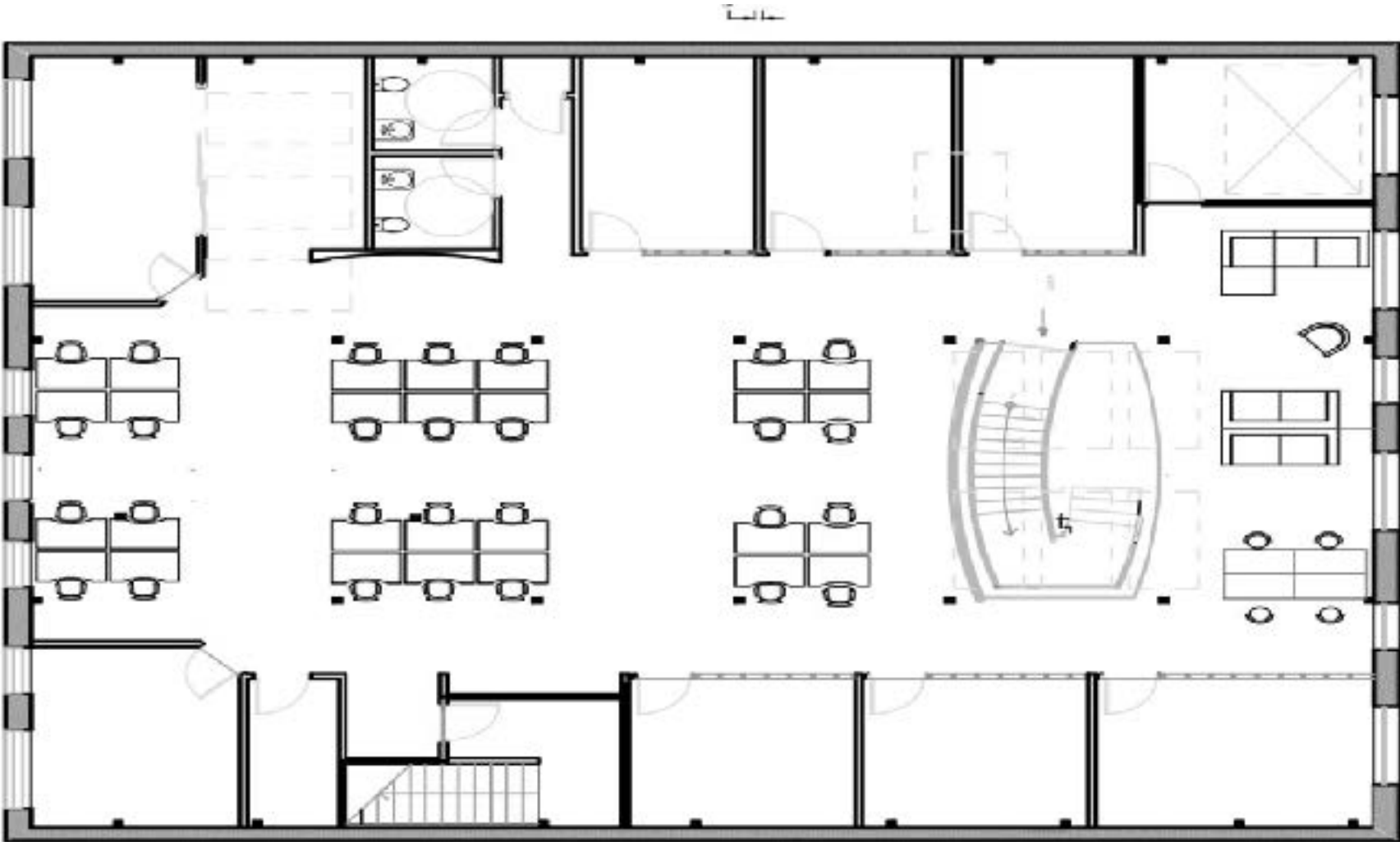
- Excellent number of meeting rooms - 17 in total
- Skylights on the second floor
- Creative finishes - exposed brick and timber, polished concrete floors with 15' ceilings
- Lots of open collaboration space & large all hands space
- Full kitchen
- Four (4) single stall, gender neutral restrooms
- 44 sit/stand workstations in place
- Space can be delivered fully plug and play
- A longer term lease is possible on a direct basis with the landlord













380 Brannan St.





STARBOARD CRE
LOCAL • INDEPENDENT • ENTREPRENEURIAL

STARBOARDCRE.COM

OFC. PHONE 415.765.6900

49 POWELL STREET, SAN FRANCISCO, CA 94102



The largest, independently -owned commercial real estate firm in San Francisco.

Unique Vision

We see what others miss

Local Market Leader

No one knows Northern California like we do

Full Service Firm

We do it all

Craig Hansson

Vice President

craig@starboardcre.com

CELL: 415.710.7768

OFC. PHONE: 415.765.6900

BRE # 01841643

Locally based, technology forward, our brokers are highly qualified experts backed by a full-service, in-house support team who understand the intricacies of San Francisco real estate. Starboard CRE brings decades of brokerage experience representing over 600 million square feet of space with an aggregate lease value of over 10 billion and investments sold over 3 billion.

BRE# 01103056

