

1112 Bryant St.

San Francisco, CA 94103

Full Top Floor Opportunity
in SoMa District

[View Online](#)



STARBOARD CRE
LOCAL • INDEPENDENT • ENTREPRENEURIAL

STARBOARDCRE.COM
OFC. PHONE 415.765.6900
49 POWELL STREET, SAN FRANCISCO, CA 94102

1112 BRYANT ST.

- South of Market, is known for its vast, warehouse-filled district. It encompasses Mission Bay and South Beach, where the Giants play baseball at waterfront AT&T Park.
- Surrounding Yerba Buena Gardens is an arts center, the sleek convention complex Moscone Center and several museums, including the acclaimed San Francisco Museum of Modern Art (SFMOMA). The area is dotted with upscale dining options and high-energy nightclubs.



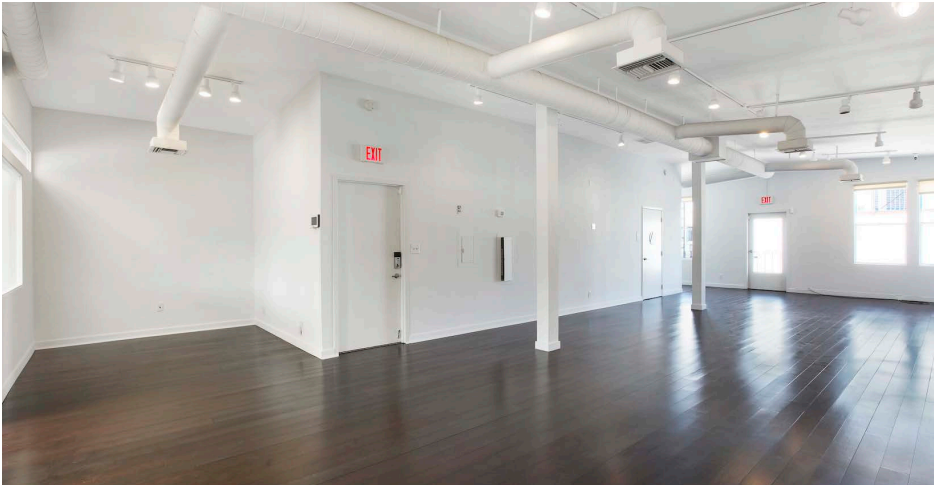
| | |
|------------|------------|
| Square Ft. | ± 1,500 SF |
| Rate | Negotiable |
| Term | Negotiable |

HIGHLIGHTS

- Rare True Office Designation on Bryant Street
- Brand New Spec Suite
- 2 Private Offices/Conference Room w/ Outside Decks
- New Modern Kitchen with Dishwasher, Microwave and Refrigerator
- 1 ADA Bathroom
- Great Natural Light
- Fully Wired and Move-in Ready
- Affordable Parking 1 Block Away

INCREASED BROKER BONUS, CALL FOR DETAILS: 415-299-7042









STARBOARD CRE
LOCAL • INDEPENDENT • ENTREPRENEURIAL

STARBOARDCRE.COM
OFC. PHONE 415.765.6900
49 POWELL STREET, SAN FRANCISCO, CA 94102



The largest, independently -owned commercial real estate firm in San Francisco.

Unique Vision

We see what others miss

Local Market Leader

No one knows Northern California like we do

Full Service Firm

We do it all

CRAIG HANSSON

VICE PRESIDENT
CALL 415-710-7768
craig@starboardcre.com
BRE # 01841643

MARK MEIER

Senior Leasing & Sales Associate
CELL: 415-299-7042
mark@starboardcre.com
BRE # 02047169

Locally based, technology forward, our brokers are highly qualified experts backed by a full-service, in-house support team who understand the intricacies of San Francisco real estate. Starboard CRE brings decades of brokerage experience representing over 600 million square feet of space with an aggregate lease value of over 10 billion and investments sold over 3 billion.

BRE# 01103056

