

# For Lease

## 1005 Terra Nova Blvd

Pacifica, CA 94044

**Frank Vella**

Broker Associate

frank@starboardcre.com

CELL: 650.464.8062

OFC. PHONE: 415.765.6900

BRE # 01104977

[View Online](#)



**STARBOARD CRE**  
LOCAL • INDEPENDENT • ENTREPRENEURIAL

STARBOARDCRE.COM  
OFC. PHONE 415.765.6900  
49 POWELL STREET, SAN FRANCISCO, CA 94102

## 1005 TERRA NOVA | SUITE 6

Suite 5* - SF	± 810 SF
Suite 6 - SF	± 1,200 SF
Rate	\$1.85 SF/Month - IG
Term	Negotiable

**\*Suite 5 will be available May 31st, 2023**

### BUILDING DESCRIPTION

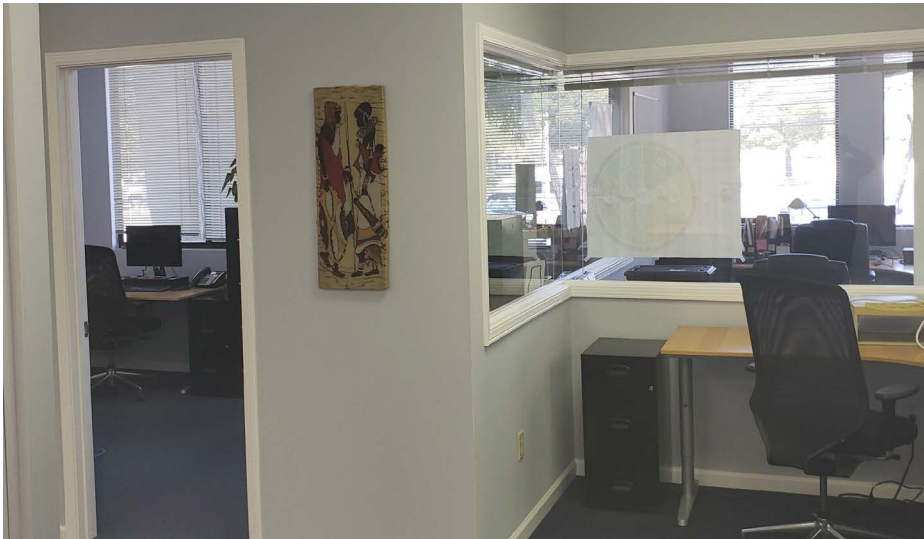
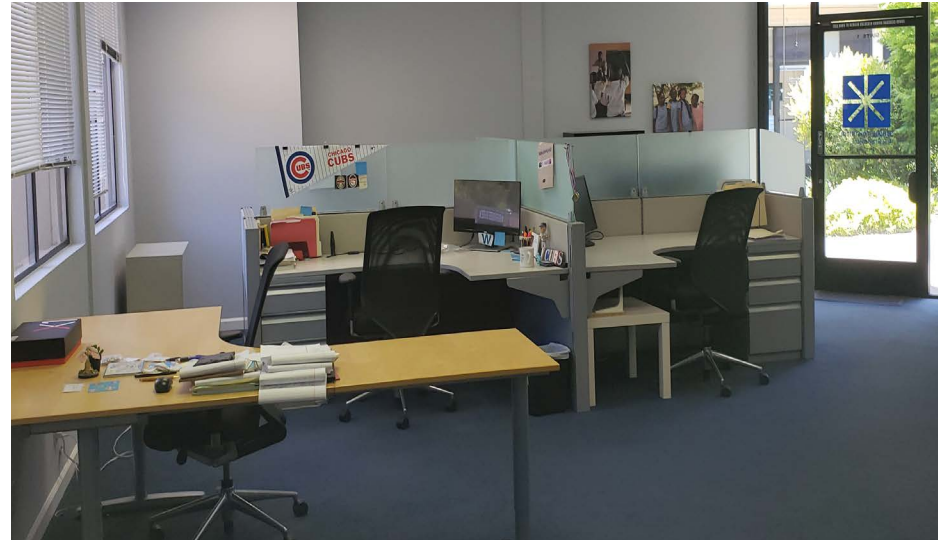
Single story professional building located near a small shopping strip mall center. Food, dining, services available right nearby. Minutes to San Francisco, The Peninsula, and SFO. Great community with nearby parks, open space, beaches, and hiking/biking trails.

### HIGHLIGHTS

- Great space located in a quiet residential area
- Availability to nearby stores and restaurants
- Space has sink and water available in suite
- Private office and open area









**STARBOARD CRE**  
LOCAL • INDEPENDENT • ENTREPRENEURIAL

STARBOARDCRE.COM  
OFC. PHONE 415.765.6900  
49 POWELL STREET, SAN FRANCISCO, CA 94102



The largest, independently-owned commercial real estate firm in San Francisco.

### Unique Vision

We see what others miss

### Local Market Leader

No one knows Northern California like we do

### Full Service Firm

We do it all

Locally based, technology forward, our brokers are highly qualified experts backed by a full-service, in-house support team who understand the intricacies of San Francisco real estate. Starboard CRE brings decades of brokerage experience representing over 600 million square feet of space with an aggregate lease value of over 10 billion and investments sold over 3 billion.

BRE# 01103056

