

# FOR LEASE

## 25 Lusk Alley

San Francisco, CA 94107

### Mario Previtali

Senior Leasing & Sales Associate

mario@starboardcre.com

Cell: 415.755.8905

OFC. Phone: 415.765.6900

Bre# 01902075

[View Online](#)



**STARBOARD CRE**  
LOCAL • INDEPENDENT • ENTREPRENEURIAL

STARBOARDCRE.COM

OFC. PHONE 415.765.6900

49 POWELL STREET, SAN FRANCISCO, CA 94102

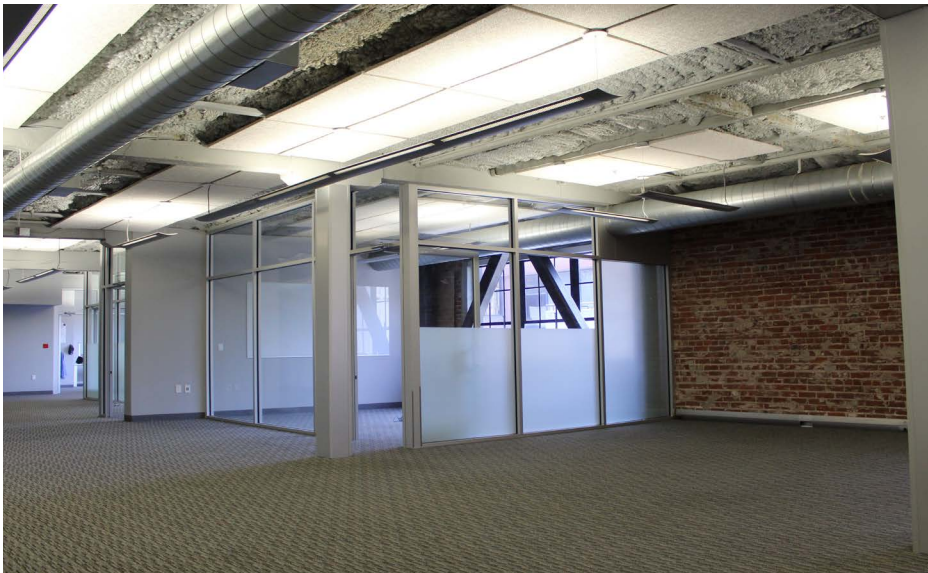
## 25 LUSK ALLEY

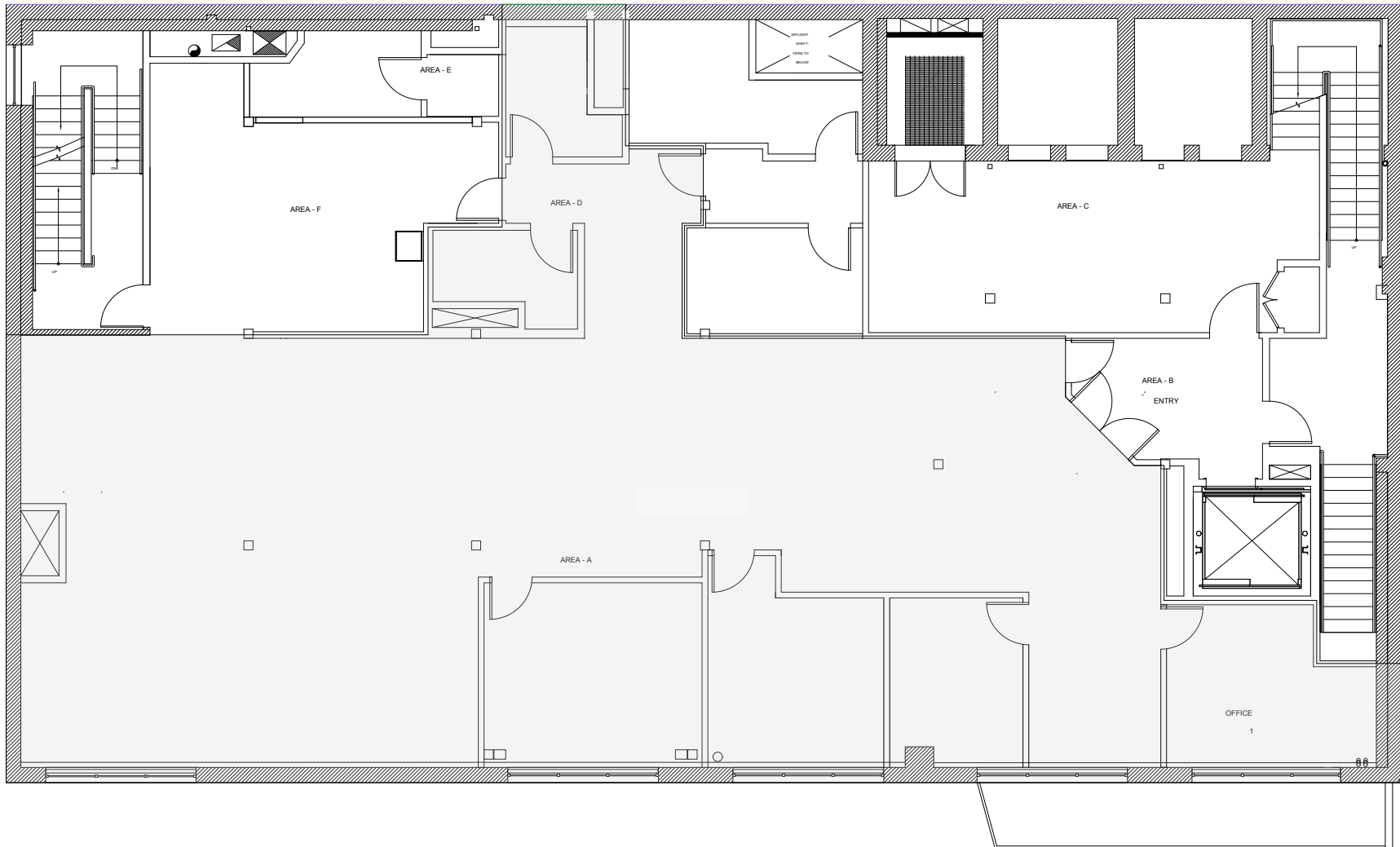
Square Ft.	± 3,600 RSF on Second Floor
Term	Flexible
Space Type	Office
Rate	Call for Rate

## HIGHLIGHTS

- ±3,600 RSF on the second floor
- 3-5 year lease term
- Three (3) exclusive on-site parking spaces
- Efficient, open plan layout
- Four (4) all glass meeting rooms
- Sand blasted brick and timber aesthetics
- ±10 foot ceiling with excellent natural light
- Fully sprinklered
- Full HVAC system with separate zones
- Five (5) large industrial sash windows
- Two (2) in-suite ADA bathrooms
- 600 amp, 3 phase total building power supply, separately metered space
- Full rooftop restaurant & bar with open seating & retractable roof cover









**STARBOARD CRE**  
LOCAL • INDEPENDENT • ENTREPRENEURIAL

STARBOARDCRE.COM

OFC. PHONE 415.765.6900

49 POWELL STREET, SAN FRANCISCO, CA 94102



## Unique Vision

We see what others miss

## Local Market Leader

No one knows Northern  
California like we do

## Full Service Firm

We do it all

### Mario Previtali

Senior Leasing & Sales Associate

mario@starboardcre.com

Cell: 415.755.8905

OFC. Phone: 415.765.6900

Bre# 01902075

Locally based, technology forward, our brokers are highly qualified experts backed by a full-service, in-house support team who understand the intricacies of San Francisco real estate. Starboard CRE brings decades of brokerage experience representing over 600 million square feet of space with an aggregate lease value of over 10 billion and investments sold over 3 billion.

**BRE# 01103056**

