



FOR LEASE

Awesome café, retail and
large baking kitchen space
with offices

FOR LEASE | APPROX. ± 7,200 SF

1309 HOWARD STREET

San Francisco, CA 94103

Brookwood
STARBOARD
Strategic Real Estate Advisory, Brokerage & Development



1309 HOWARD STREET

Square Ft.	± 7,200SF
Term	February 28, 2024
Space Type	Kitchen, Office, Retail
Rate	\$25/SF IG
Lease Type	Industrial Gross

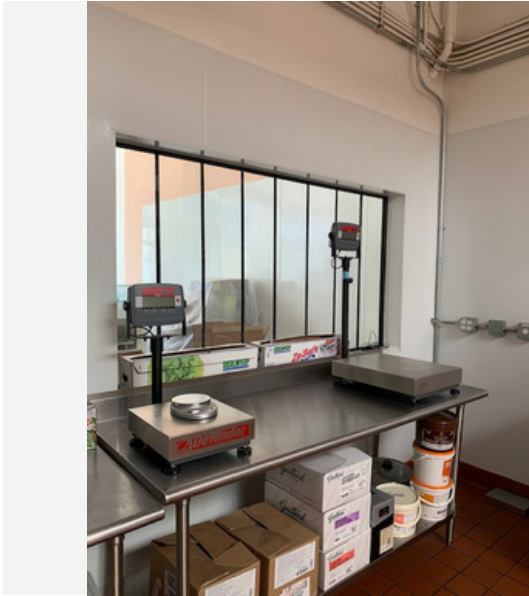
HIGHLIGHTS

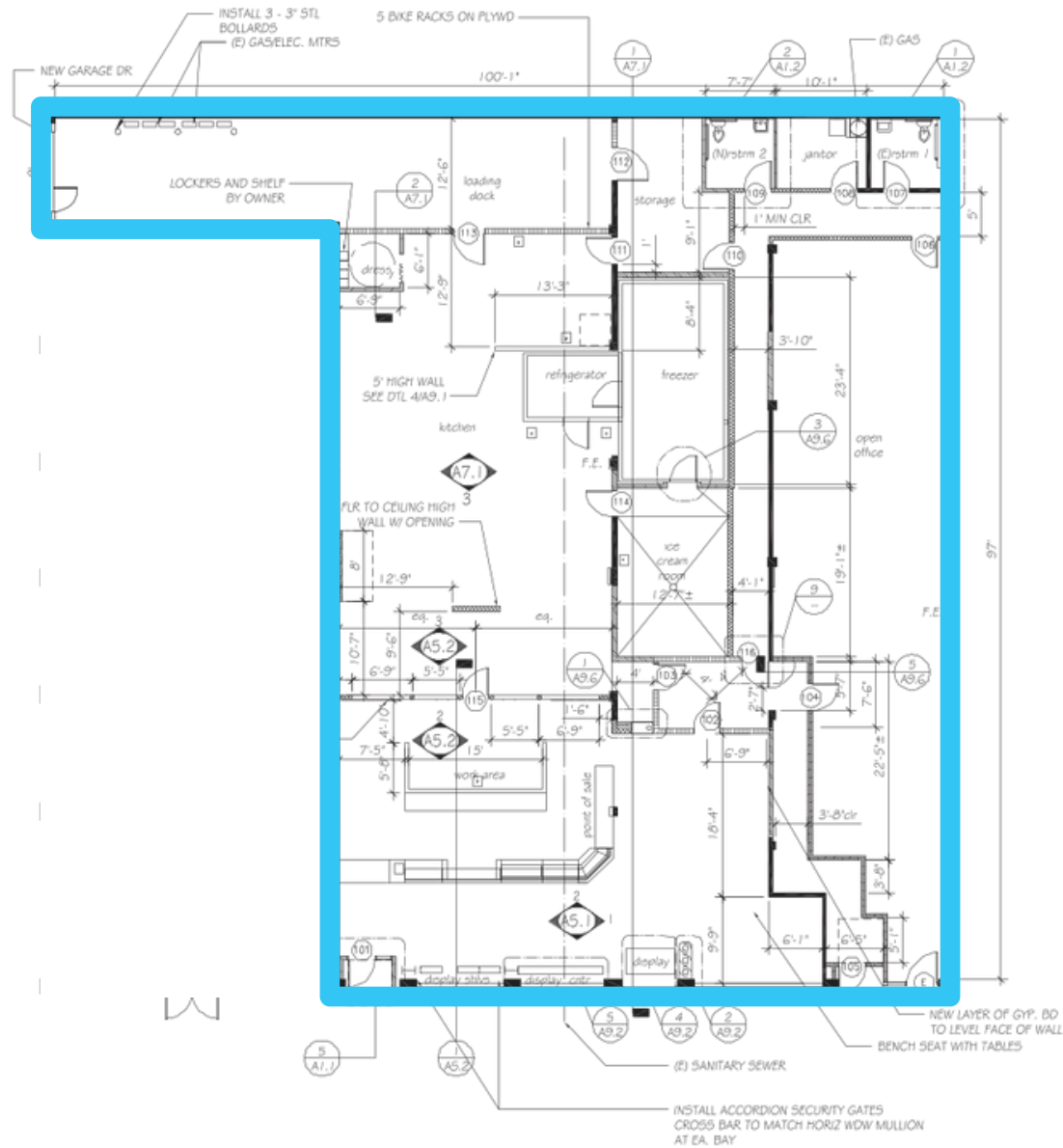
- ✓ Full bakery kitchen
- ✓ Loading area
- ✓ Office and retail space
- ✓ Kitchen equipment may be available: negotiable
- ✓ Awesome café, retail and large baking kitchen space with offices
- ✓ Also great for most all light industrial, retail, storage, shop space
- ✓ Great loading off of 9th Street with tons of window line along Howard Street











WALL LEGEND

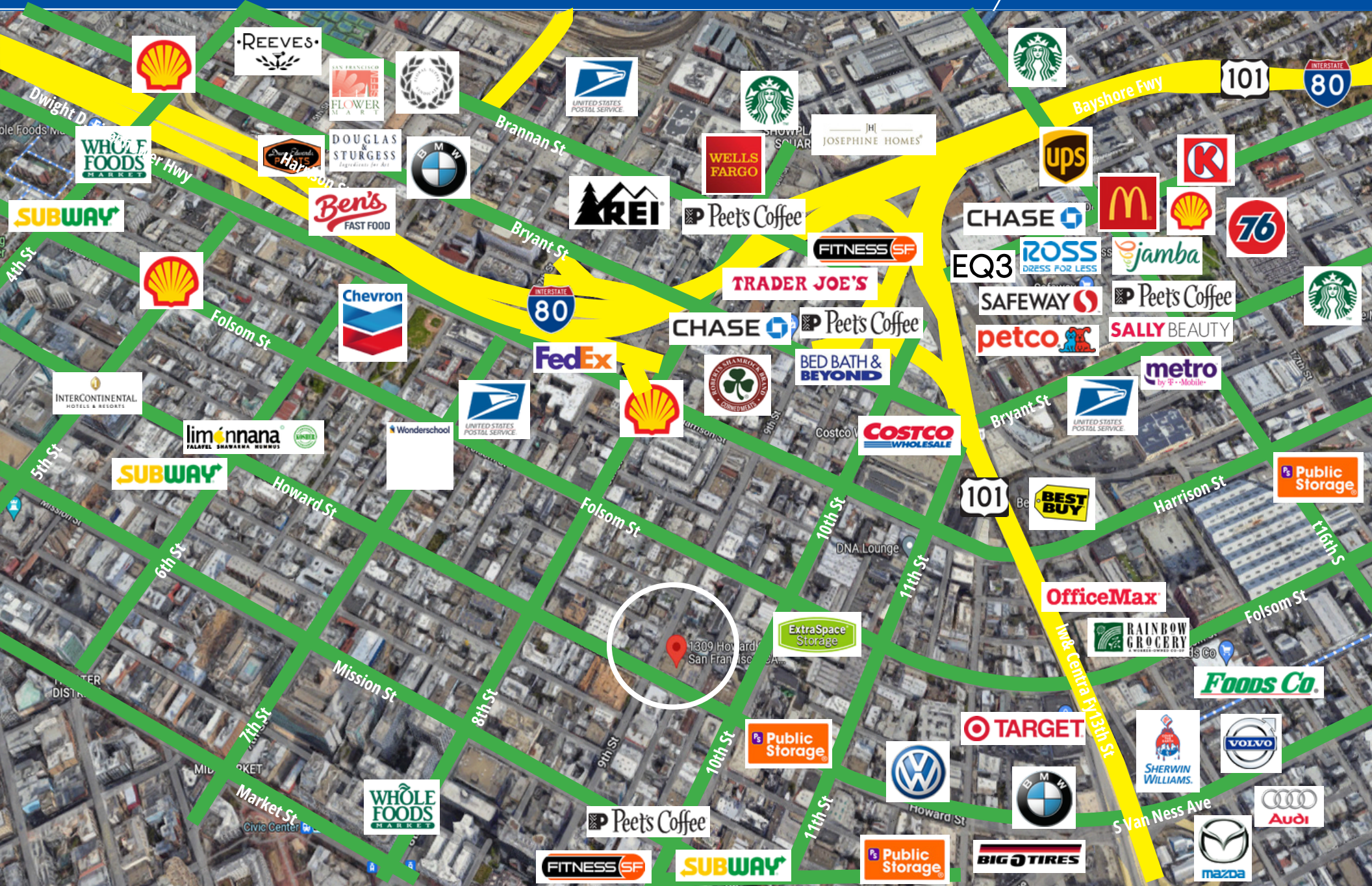
- EXISTING
- NEW 2x4 HD STUD WALL 8'-0" HIG 24" SQ 18" SQ 1/2" 1/2" INSUL
 - NEW 2x4 HD STUD 10" W/ WALL 1/2" CHG DEK 3/8" INS 1/2" C.C. 1/2" 3/8" INSUL AT 10' A.P.F. 1/2" J BATT INSUL AT ICE CREAM ROOM
 - NEW 2x4 HD WALL 25'0" HIG 2" C.C. 3/8" INS 1/2" W. 3/8" INSUL BKG AT 10' AFF R. 1/2" INSUL
 - NEW 2x4 HD STUD WALL 8'-0" HIG 24" SQ 18" SQ 1/2" 1/2" INSUL
- WALL BETWEEN KITCHEN AND RETAIL TO BE 5/8" FOR SOLID
- SECTION 110.221.2.1.1 TABLE
7 SEATS - 1 ACCESSIBLE
- ONE TABLE TO BE 28-34" TO TOP SURFACE
4 FEET DIA. 1.3/4" DIA.
4 HAVE 4" ISA SYMBOL
- FIRE EXTINGUISHER -
KITCHEN MOUNT 40 B.C. OR TYPE K1 AT 44" A.P.F. ON COL.
OFFICE MOUNT FIRE EXTINGUISHER ON WALL - STANDARD TYPE.



REVISION	DESCRIPTION
	<p><i>Christal Quilton</i></p> <p>1309-1315 Howard Street San Francisco, Calif., 94103</p> <p>Proposed Plan</p> <p>JOB NUMBER 87000 DRAWN BY PP SCALE: 1/4"=1'-0"</p> <p>A1.1</p> <p>DATE: 4/14/14</p>

copyright © 2013 Peter Rezak

NOTICE: As an independent contractor, the architect is not responsible for the accuracy of the information and data provided and may be used only for the specific transactions to which the drawings are intended to apply.



- 1 ALLIED ARCHITECTURE AND DESIGN
- 2 PRESTIGE DENTAL ARTS
- 3 MOMENT X STUDIO
- 4 CAL CONSTRUCTION & CONSULTING - HOME
- 5 UNBOX PRODUCT DEVELOPMENT
- 6 BIOQ PHARMA INC
- 7 CHANTAL GUILLON PATISSERIE
- 8 PRC (POSITIVE RESOURCE CENTER)
- 9 BAKER PLACES INC
- 10 FOOD ROCKET
- 11 THOMAS QUINN, LLP EARTHBATH ZOZI'S LOFT
- 12 DJ BATH PLUS
- 13 HAMILTON FAMILIES | ADMINISTRATIVE
- 14 OFFICES
- 15





Unique Vision
We see what others miss

Local Market Leader
No one knows Northern
California like we do

Full Service Firm
We do it all

BARRY BRAM
*Executive Director, Broker,
CCIM, LEED AP*
CALL 415-516-3313
barry@brook-star.com
CA BRE# 00639738

As the largest independently-owned commercial real estate firm in San Francisco, Starboard CRE provides boutique, full-service, client-oriented expertise while offering global reach through national and international partner offices. Established in 1991, Starboard CRE has organically developed significant relationships with owners, investors, tenants, developers, architects, and attorneys throughout the San Francisco Bay Area with access to a network of professionals throughout multiple markets in the U.S. Locally based, technology forward, our brokers are highly qualified experts backed by a full-service, in-house support team who understand the intricacies of San Francisco real estate. Starboard CRE brings decades of brokerage experience representing over 600 million square feet of space with an aggregate lease value of over 10 billion and investments sold over 3 billion.

