



**STARBOARD CRE**  
LOCAL • INDEPENDENT • ENTREPRENEURIAL

**For Lease**

**49 Powell Street**

San Francisco, CA 94102

2 Spaces, ± 3,200 SF Each – workspace ready floors ideal for small firms.

**Hans Hansson**  
415.517.2589

**Craig Hansson**  
415.710.7768



STARBOARDCRE.COM  
49 POWELL STREET, SAN FRANCISCO, CA 94102

**Size:** ± 3,200 SF  
**Rate:** \$34 SF/YR  
**Type:** Industrial Gross(IG)  
**Term:** 1 - 5 Years

## Highlights

- Key card elevator access with direct entry to the full floor
- Easily adjustable manual sit-stand desks spaciously positioned
- Framed glass doors and operable windows
- Brand new touchless stainless steel faucets, soap, and sanitizer dispensers
- 2 separate restrooms
- An overwhelming

\$3.00 BROKER COMMISSION FEE



# 2ND FLOOR | IMAGES

For Lease

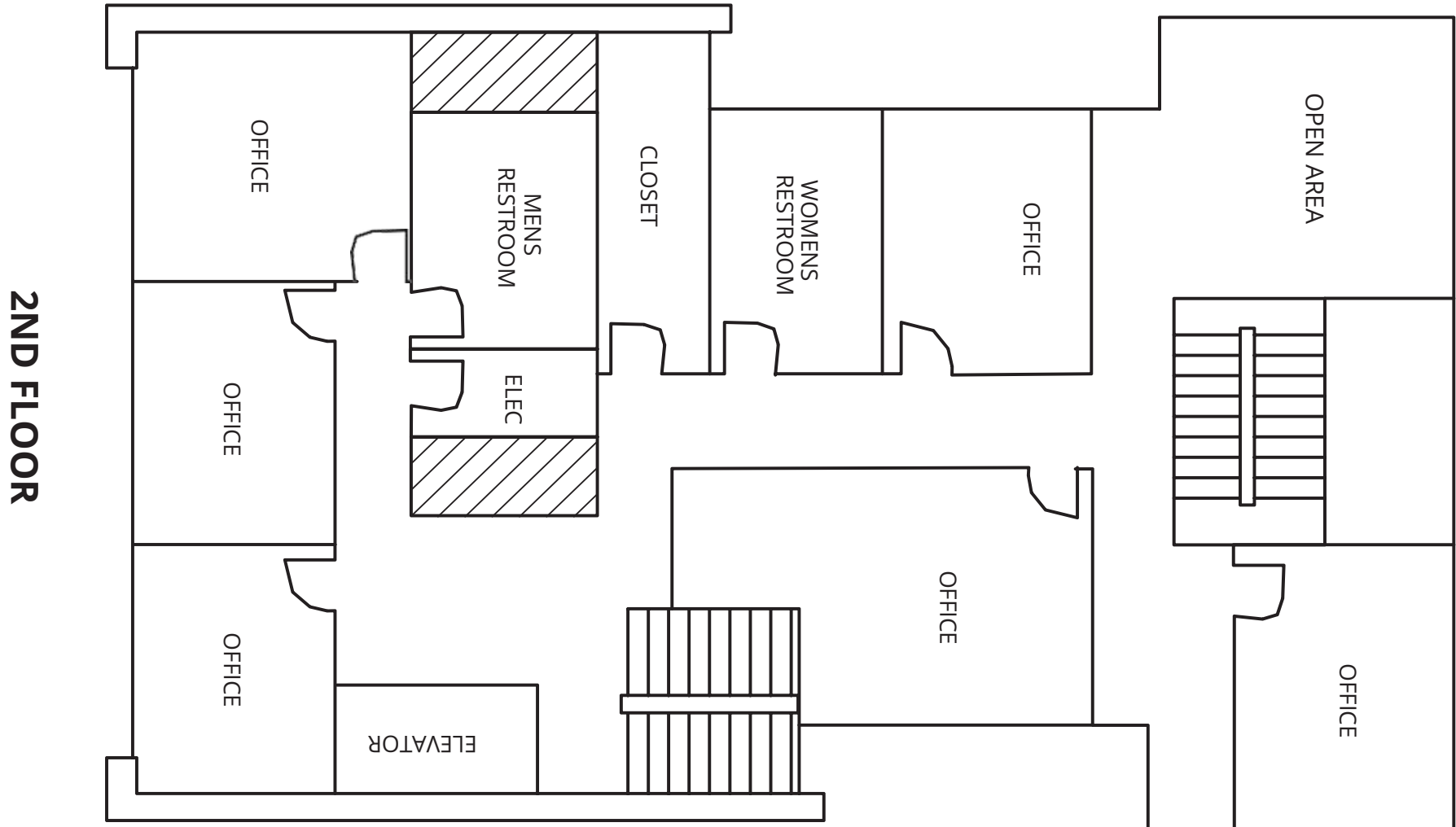


This information has been secured by Starboard CRE from sources believed to be reliable. It is not guaranteed and should be verified before closing any transaction.

**STARBOARD CRE**  
LOCAL • INDEPENDENT • ENTREPRENEURIAL

# 2ND FLOOR | FLOORPLAN

For Lease



This information has been secured by Starboard CRE from sources believed to be reliable. It is not guaranteed and should be verified before closing any transaction.

**Size:** ± 3,200 SF  
**Rate:** \$34 SF/YR  
**Type:** Industrial Gross(IG)  
**Term:** 1 - 5 Years

## Highlights

- Key card elevator access with direct entry to the full floor
- Easily adjustable manual sit-stand desks spaciouly positioned with Polycarbonate desk-shields on each desk
- Private offices with framed glass doors and operable windows
- Brand new touchless stainless steel faucets, soap, and sanitizer dispensers
- Remodeled kitchenette area with quartz countertop
- Stainless steel appliances - fridge and dishwasher
- 2 separate restrooms



# 3RD FLOOR | IMAGES

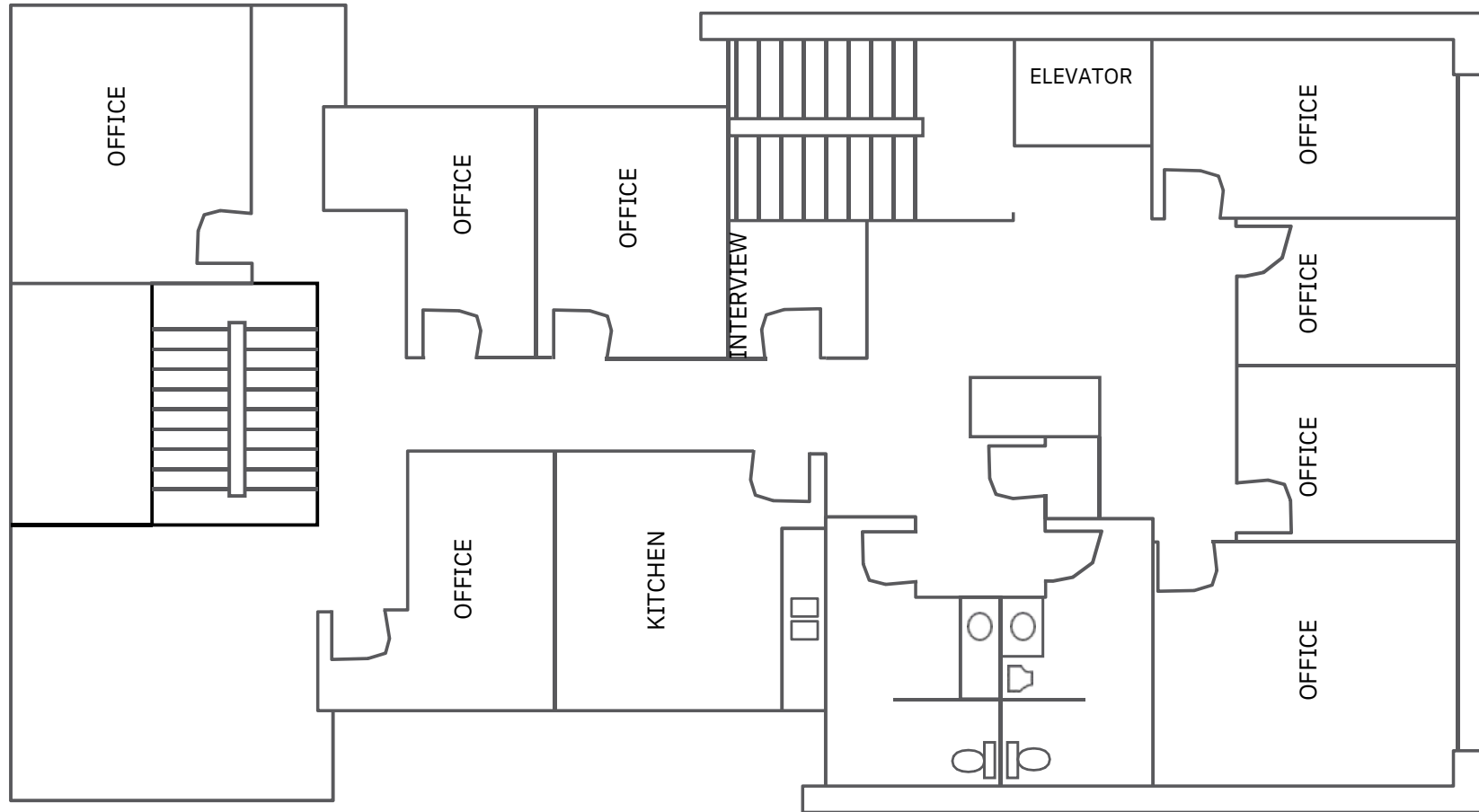
For Lease



This information has been secured by Starboard CRE from sources believed to be reliable. It is not guaranteed and should be verified before closing any transaction.

# 3RD FLOOR | FLOORPLAN

For Lease



This information has been secured by Starboard CRE from sources believed to be reliable. It is not guaranteed and should be verified before closing any transaction.

### Nearby transportation

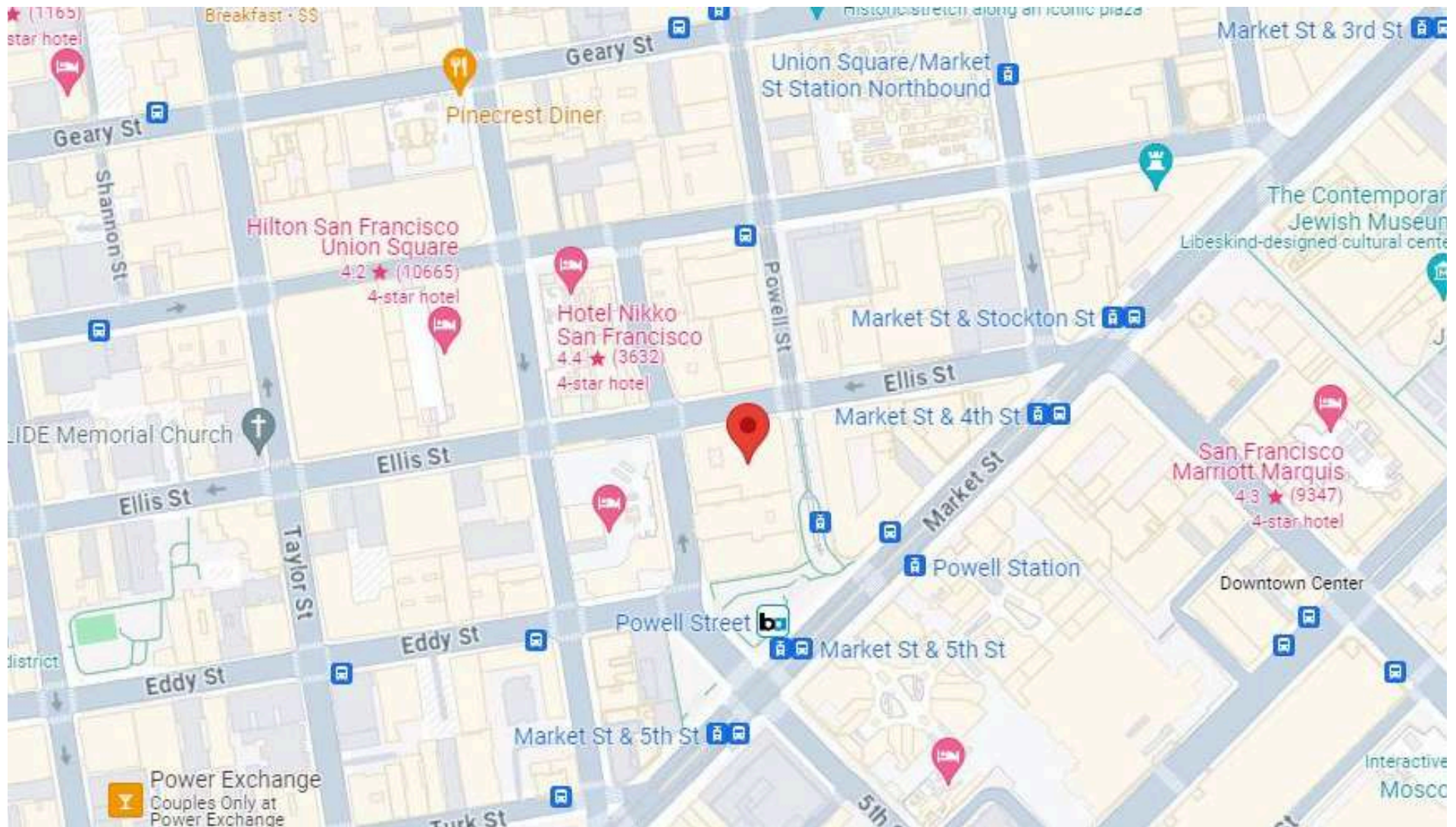
- Powell and Market Public
- Leavenworth St & O'Farrell St
- San Francisco Municipal Transportation Agency
- Ponto de referência
- Sutter St & Laguna St





# AMENITIES MAP

For Lease



This information has been secured by Starboard CRE from sources believed to be reliable. It is not guaranteed and should be verified before closing any transaction.



## Hans Hansson

President / Broker of Record  
hans@starboardcre.com  
CELL: 415.517.2589  
CA DRE # 00872902

Call

View Profile



## Craig Hansson

Vice President  
craig@starboardcre.com  
CELL: 415.710.7768  
CA DRE # 01841643

Call

View Profile



**STARBOARD CRE**  
LOCAL • INDEPENDENT • ENTREPRENEURIAL

STARBOARDCRE.COM  
OFC. PHONE 415.765.6900  
49 POWELL STREET, SAN FRANCISCO, CA 94102



**Unique Vision**  
We see what others miss

**Local Market Leader**  
No one knows Northern  
California like we do

**Full-Service Firm**  
We do it all

Locally based, and technology-forward, our brokers are highly qualified experts backed by a full-service, in-house support team who understand the intricacies of San Francisco real estate. Starboard CRE brings decades of brokerage experience representing over 600 million square feet of space with an aggregate lease value of over 10 billion and investments sold over 3 billion.

**CA DRE# 01103056**

