

# FOR LEASE

## 3450 California St.

San Francisco, CA 94118

- Entire 2nd Floor Space
- Divisible to 1,500 SF
- 10 Parking Spaces Included
- Directly Across from Laurel Village

[View Online](#)



**STARBOARD CRE**  
LOCAL • INDEPENDENT • ENTREPRENEURIAL

STARBOARDCRE.COM  
OFC. PHONE 415.765.6900  
49 POWELL STREET, SAN FRANCISCO, CA 94102

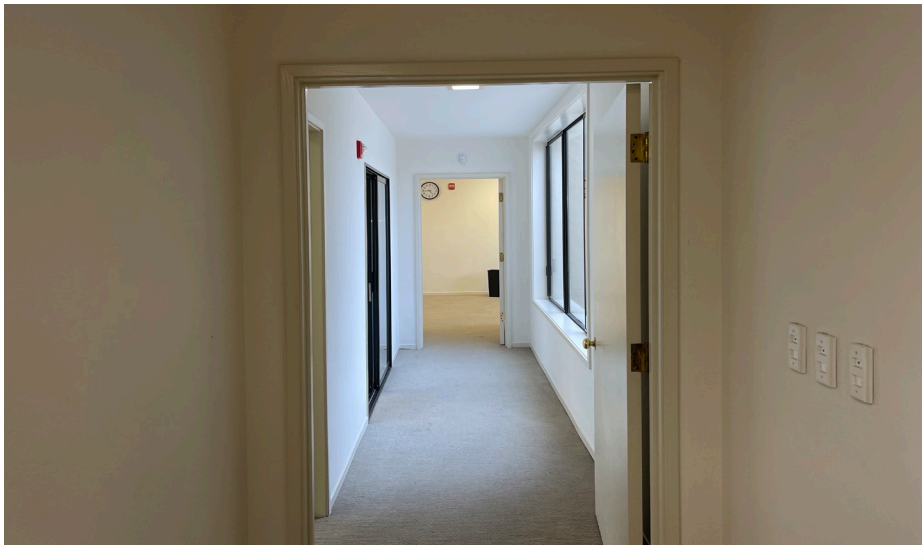
## 3450 California St.

Square Ft.	5,000 SF
Term	Negotiable
Rate	Negotiable

## HIGHLIGHTS

- Private Office Intensive Space
- Multiple Sizes of Private or Conference Rooms
- Great Natural Light Window Line California Street Side
- Kitchenette
- Two Bathrooms
- Walk Up to 2nd Floor
- Can Be Divided to 1,500 SF
- Located Directly Across from Laurel Village
- 10 Parking Spaces Included
- Ground Floor Tenant: Radnet









## FLOOR PLAN

This floor plan including furniture, fixture measurements and dimensions are approximate and for illustrative purposes only. Boxbrownie.com gives no guarantee, warranty or representation as to the accuracy and layout. All enquiries must be directed to the agent, vendor or party representing this floor plan.





Google





**STARBOARD CRE**  
LOCAL • INDEPENDENT • ENTREPRENEURIAL

STARBOARDCRE.COM  
OFC. PHONE 415.765.6900  
49 POWELL STREET, SAN FRANCISCO, CA 94102



The largest, independently -owned commercial real estate firm in San Francisco.

## Unique Vision

We see what others miss

## Local Market Leader

No one knows Northern California like we do

## Full Service Firm

We do it all

### Hans Hansson

President / Broker of Record  
hans@starboardcre.com  
CELL: 415.517.2589  
OFC. PHONE: 415.765.6900  
BRE # 00872902

### Craig Hansson

Vice President  
craig@starboardcre.com  
OFC. PHONE: 415.710.7768  
BRE # 01841643

Locally based, technology forward, our brokers are highly qualified experts backed by a full-service, in-house support team who understand the intricacies of San Francisco real estate. Starboard CRE brings decades of brokerage experience representing over 600 million square feet of space with an aggregate lease value of over 10 billion and investments sold over 3 billion.



BRE# 01103056