



# FOR LEASE

---

*Prime retail flex  
opportunity in the highly  
sought after Potrero Hill  
Neighborhood.*

FOR LEASE | APPROX. 7,082 SF | ZONING: UMU – URBAN MIXED USE

## 1701 17TH STREET

San Francisco, CA 94103



### STARBOARD CRE

LOCAL · INDEPENDENT · ENTREPRENEURIAL

## 1701 17TH STREET

Square Ft.	± 7,082 SF
Term	Negotiable
Zoning	UMU - Urban Mixed USE

## HIGHLIGHTS

- ✓ Newly built in 2015
- ✓ Ground floor space along with additional mezzanine space upstairs
- ✓ Approx. 18 foot ceilings
- ✓ Open floor concept with multiple sides of natural light
- ✓ ADA compliant restrooms

Prime retail flex opportunity in the highly sought after Potrero Hill Neighborhood. Well positioned on the corner for Carolina and 17th St.

This area is home to several office users, new development projects and a growing population.



[Schedule a Private Tour](#)

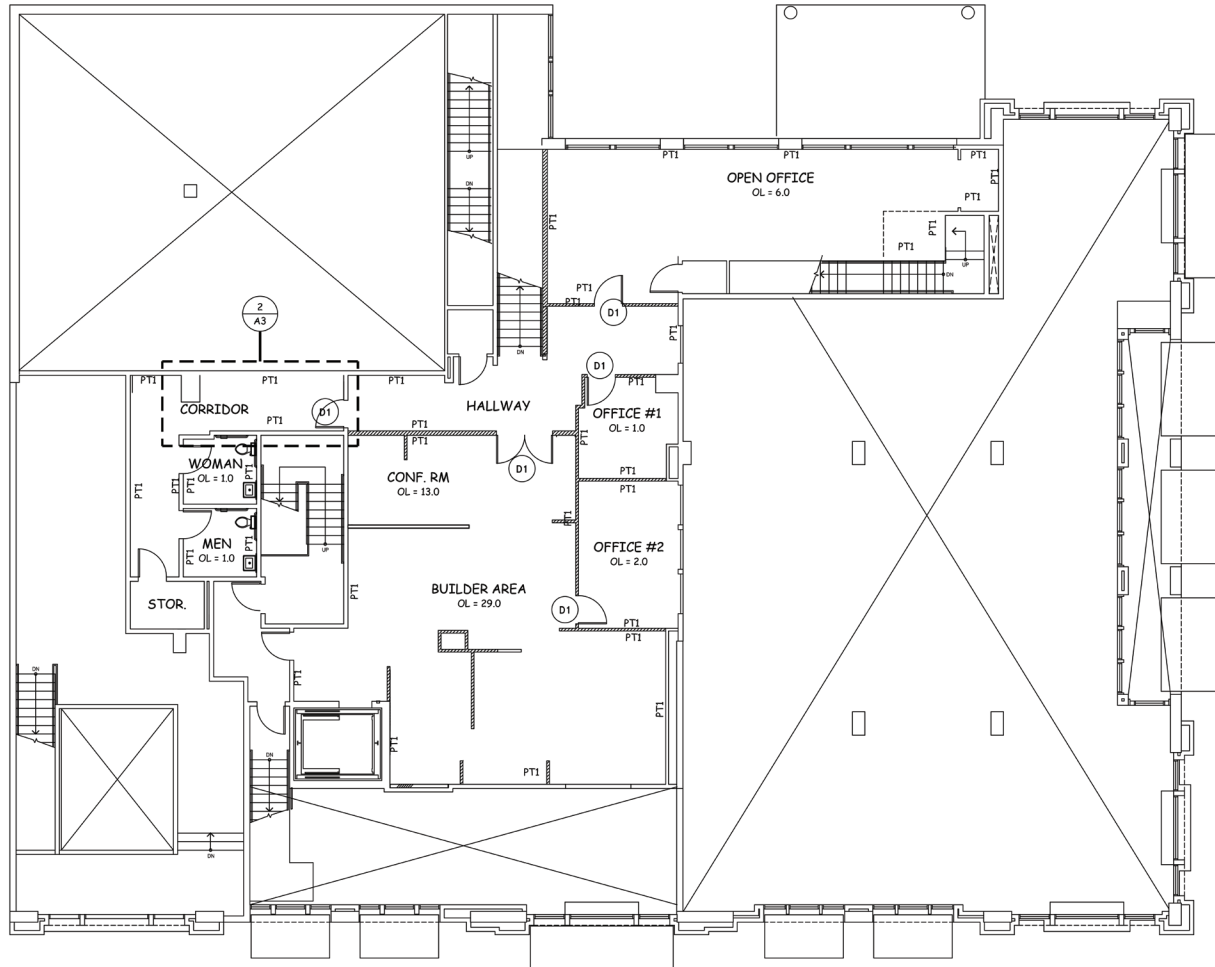
[E: craig@starboardnet.com](mailto:craig@starboardnet.com)

FOR LEASE | APPROX. 7,082 SF | CRAIG HANSSON M. 415-710-7768 | MARK MEIER M.415-299-7042

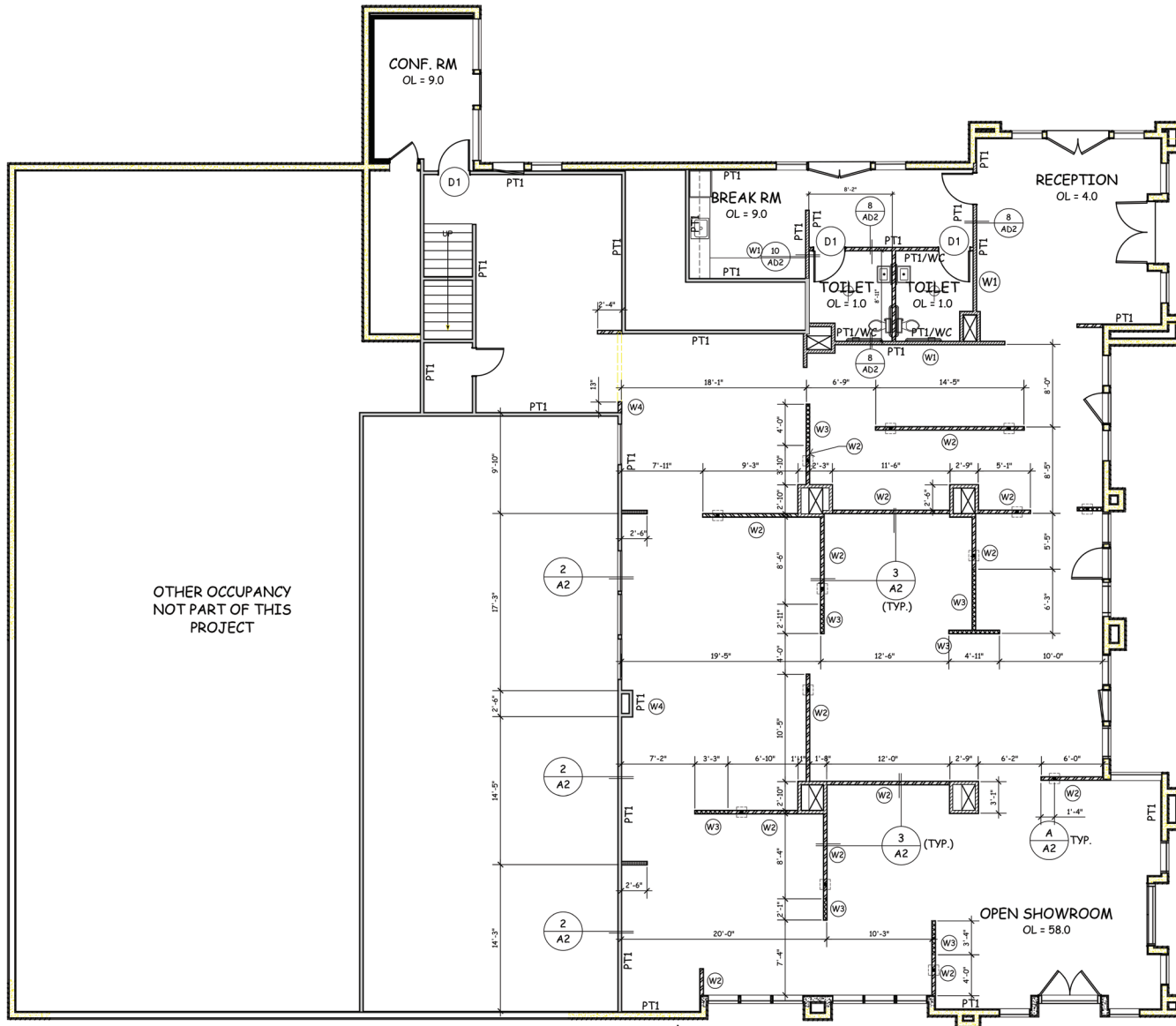


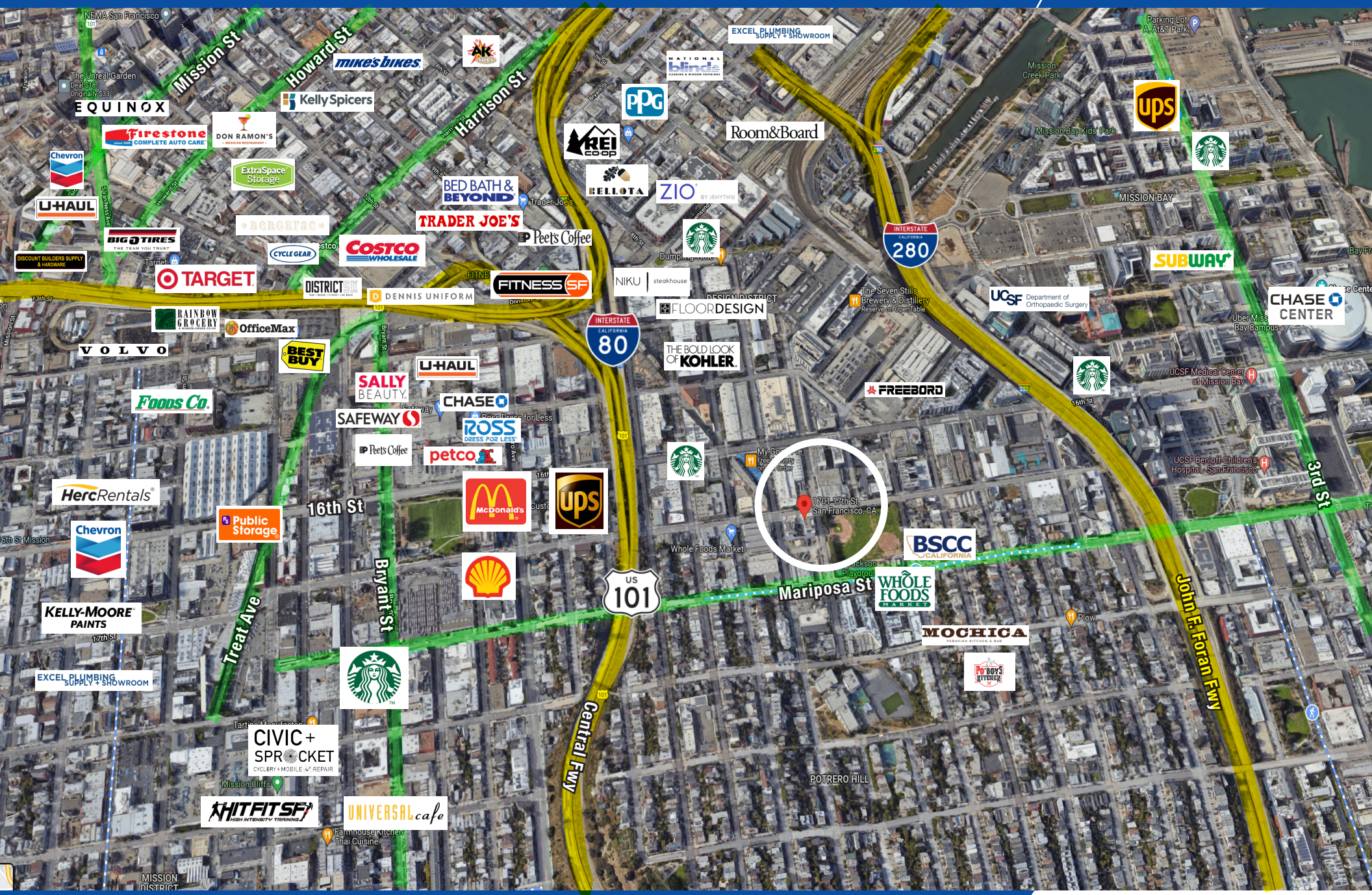
FOR LEASE | APPROX. 7,082 SF | CRAIG HANSSON M. 415-710-7768 | MARK MEIER M.415-299-7042





1 MEZZANINE FLOOR PLAN  
A3 SCALE: 1/8" = 1'-0"

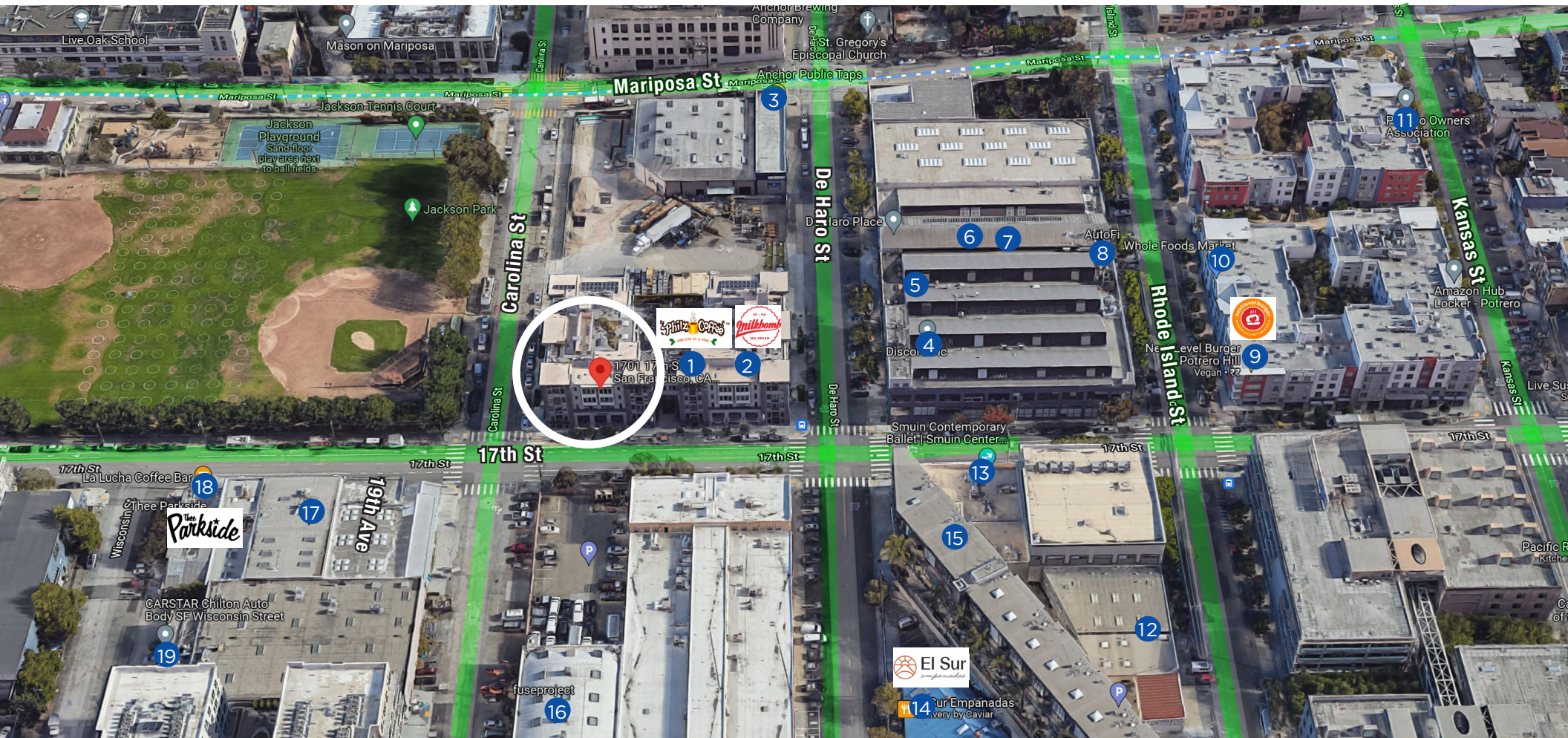




# Micro Points of Interest

FOR LEASE

- |                          |                                  |   |  |
|--------------------------|----------------------------------|---|--|
| 1 PHILZ COFFEE           | 6 ZOTO HOST, INC                 | 10 WHOLE FOODS MARKET                       | 15 INDIA CONNECTION                            |
| 2 MILKBOMB ICE CREAM     | 7 PAPILIA                        | 11 POTRERO OWNERS ASSOCIATION               | 16 FUSEPROJECT                                 |
| 3 ANCHOR BREWING COMPANY | 8 AUTOFI                         | 12 SAN FRANCISCO CENTER FOR THE BOOK (SFCB) | 17 FRIENDS OF THE SAN FRANCISCO PUBLIC LIBRARY |
| 4 DISCORD INC.           | 9 NEXT LEVEL BURGER POTRERO HILL | 13 SMUIN CONTEMPORARY BALLET                | 18 THEE PARKSIDE                               |
| 5 SANS SERIF             |                                  | 14 EL SUR EMPANADAS                         | 19 CARSTAR CHILTON AUTO BODY                   |







*The largest,  
independently  
-owned commercial  
real estate firm in  
San Francisco.*

### Unique Vision

We see what others miss

### Local Market Leader

No one knows Northern  
California like we do

### Full Service Firm

We do it all

**CRAIG HANSSON**  
Vice President  
**CALL 415-710-7768**  
CA BRE# 01841643

**MARK MEIER**  
Associate  
**CALL 415-299-7042**  
CA BRE# 02047169

Since 1991, Starboard CRE has organically cultivated substantial relationships with investors, tenants, developers, architects, and accountants throughout the San Francisco-Bay Area. Locally based, Starboard agents are positioned to distinguish the San Francisco real estate market like no other, knowing the ins and outs of the city and having access to networks of more than 2,000 buildings and over 100 million square feet of space. Through these networks and unique inside knowledge, Starboard CRE makes it achievable to assist buyers quickly in finding their ideal space in one of the most unique real estate markets in the world.

