

FOR LEASE

848 FOLSOM STREET

Highly Creative Office Space in SOMA

[CLICK HERE FOR VIDEO TOUR](#)



848 Folsom Street is located in the Folsom Street corridor between 4th & 5th Street. Located 1 block away which will connect BART and Caltrans, allowing easy access for employees coming from the East or South Bay. 848 Folsom is also located in the epicenter of San Francisco's technology hub. Folsom Street allows for access to a plethora of restaurants, bars, and other amenities.

**FOR MORE INFORMATION,
PLEASE CONTACT:**

CRAIG HANSSON
Sales & Leasing Director
C: 415.710.7768
E: craig@starboardnet.com
BRE #: 0184164

HANS HANSSON
Principal
C: 415.517.2589
E: hans@starboardnet.com
BRE # 00857060



FOR LEASE

848 FOLSOM STREET

Highly Creative Office Space in SOMA

Top Floor 844 Folsom Street

Square Ft.:	±4,400
Ceiling Height	10' (feet)
Rate:	\$65.00 Per SF/Year
Term:	3 - 5 Years (Industrial Gross)

Highlights

- » Office Space with Great Natural Light
- » Large Open Area
- » 2 Large Conference Rooms
- » 1 Large Private Office
- » 1 Medium Office/Conference
- » 1 Small Office/Phone Room
- » 1 Phone Room
- » Kitchen Area/Counter
- » 3 ADA Bathrooms



**FOR MORE INFORMATION,
PLEASE CONTACT:**

CRAIG HANSSON
Sales & Leasing Director
C: 415.710.7768
E: craig@starboardnet.com
BRE #: 0184164

HANS HANSSON
Principal
C: 415.517.2589
E: hans@starboardnet.com
BRE #: 00857060

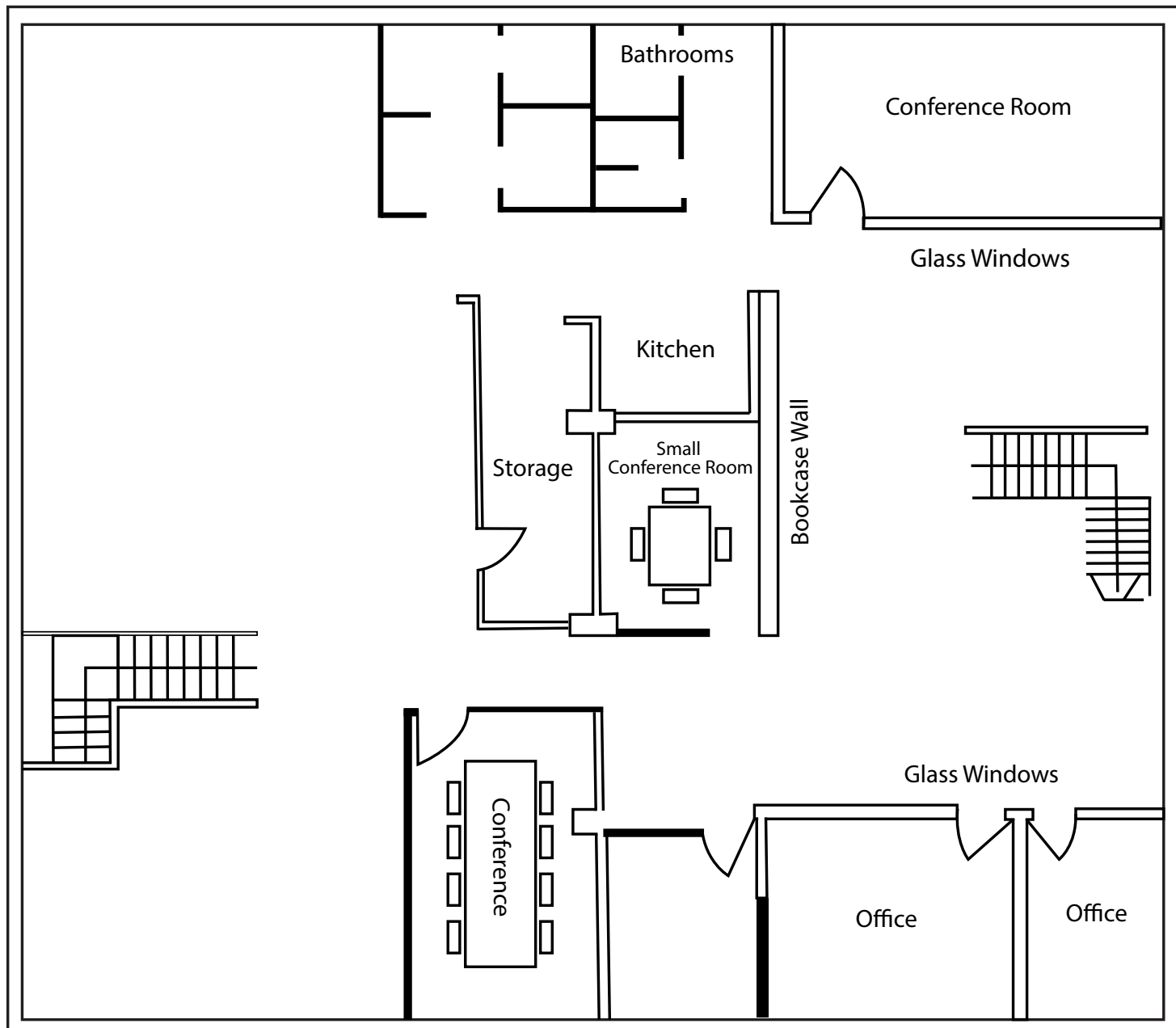


FOR LEASE

848 FOLSOM STREET

Creative Office Space w/ multiple private offices

Floor Plan



FOR MORE INFORMATION,
PLEASE CONTACT:

CRAIG HANSSON
Sales & Leasing Director
C: 415.710.7768
E: craig@starboardnet.com
BRE #: 0184164

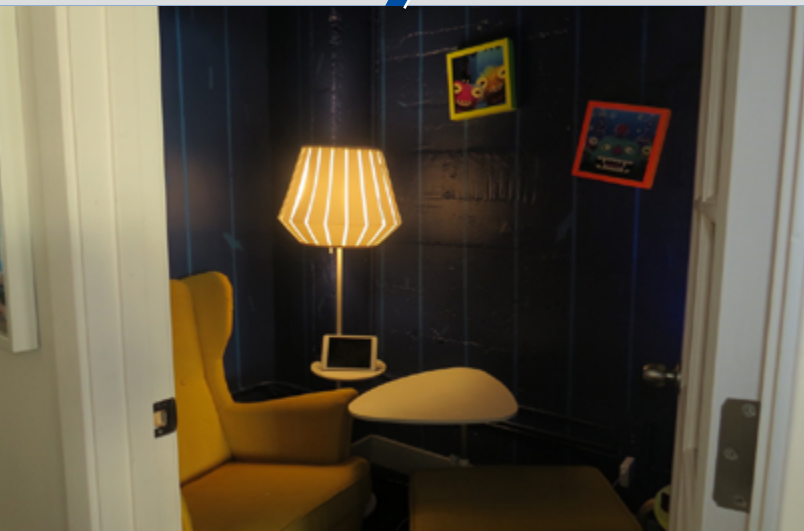
HANS HANSSON
Principal
C: 415.517.2589
E: hans@starboardnet.com
BRE # 00857060



FOR LEASE

848 FOLSOM STREET

Highly Creative Office Space in SOMA



**FOR MORE INFORMATION,
PLEASE CONTACT:**

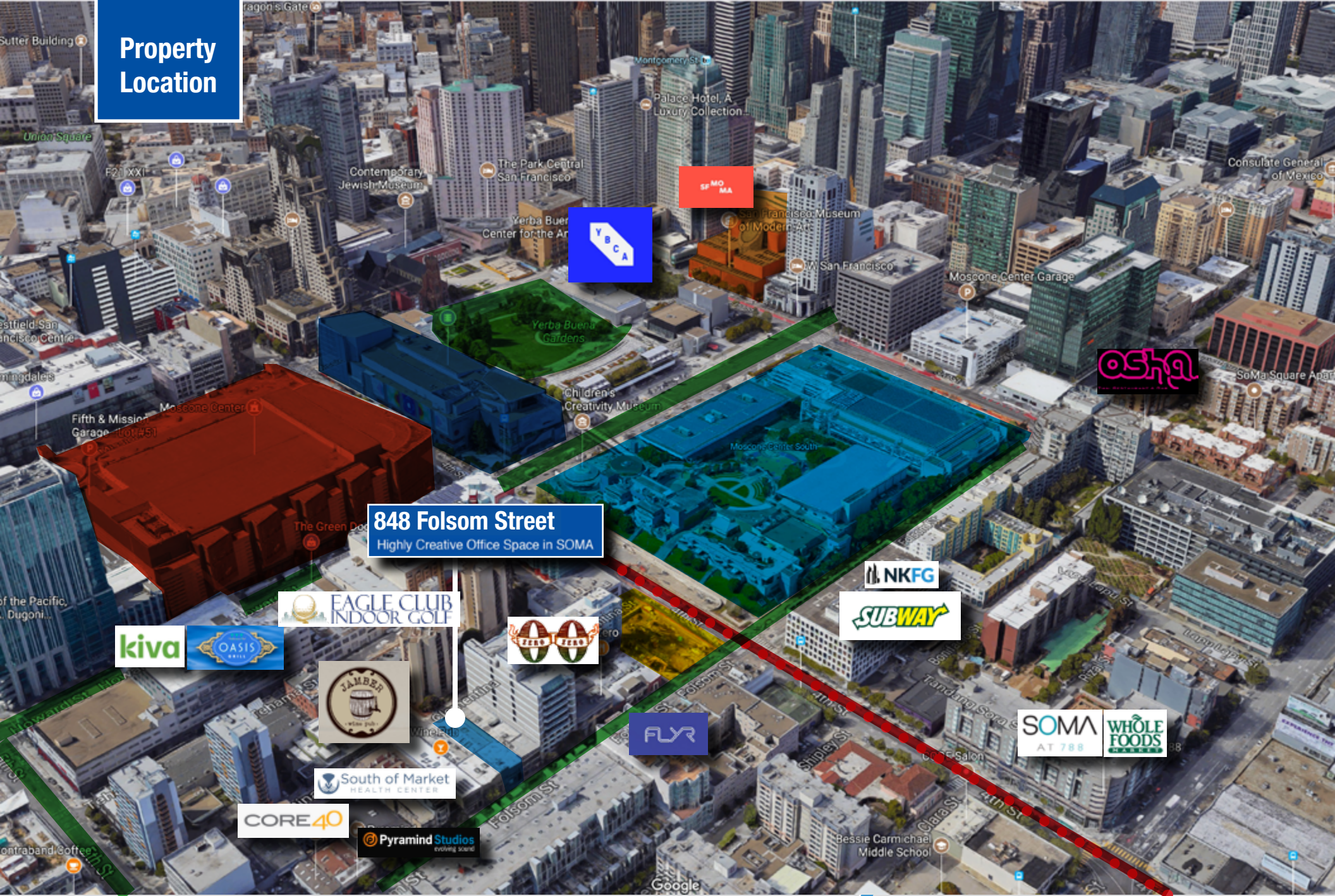
CRAIG HANSSON
Sales & Leasing Director
C: 415.710.7768
E: craig@starboardnet.com
BRE #: 0184164

HANS HANSSON
Principal
C: 415.517.2589
E: hans@starboardnet.com
BRE #: 00857060

STARBOARD
COMMERCIAL REAL ESTATE
ENTREPRENEURIAL - LOCAL - INDEPENDENT
STARBOARD LIC#01103056

TCN
WORLDWIDE
REAL ESTATE SERVICES

Property Location



848 Folsom Street

Highly Creative Office Space in SOMA

**FOR MORE INFORMATION,
PLEASE CONTACT:**

CRAIG HANSSON | Broker Associate
E: craig@starboardnet.com
C: 415.694.5367 | LIC #01841643

HANS HANSSON | Principal
E: hans@starboardnet.com
C: 415.765.6901 | LIC #00872902

STARBOARD
COMMERCIAL REAL ESTATE
ENTREPRENEURIAL • LOCAL • INDEPENDENT

TCN
WORLDWIDE
REAL ESTATE SERVICES