

*For Lease*

# 2299 Post Street

WEST OF VAN NESS, SAN FRANCISCO

Medical Office Condominium



FOR MORE INFORMATION,  
PLEASE CONTACT:

PRISCILLA WILDER | Leasing & Sales Associate  
C: (510) 367-5355 | E: priscilla@starboardnet.com  
CA BRE# 0190366



## HIGHLIGHTS & DETAILS

*For Lease*

### Pacific Heights is quintessential San Francisco

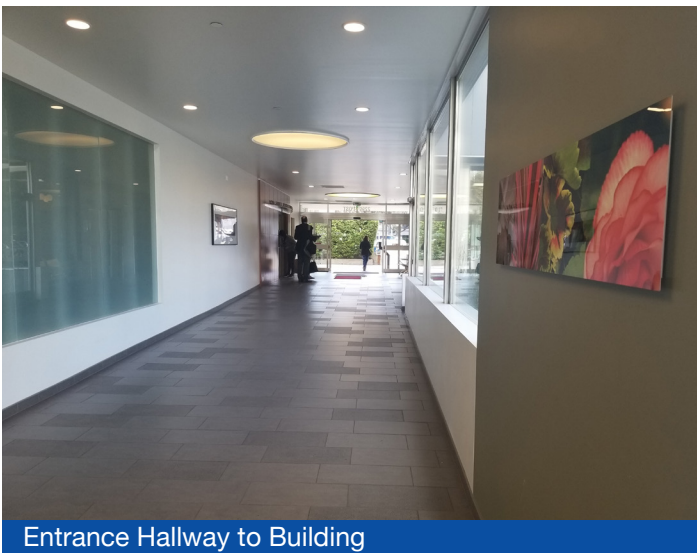
This spacious Lower Pacific Heights medical office condominium in a full service medical office complex with an elevator at Post/Divisadero, across from Mount Zion Hospital. The building was substantially remodeled and offers a clean well managed medical facility.

The space for lease offers 2 exam rooms and 1 office, a waiting area, a shared reception area and bathroom. The space offers great natural light and professional soundproofing. Excellent location convenient to several medical centers and transportation; UCSF shuttle also stops at Mount Zion Hospital. There is a leased parking space available as well as additional parking for patients and staff Post Street and Divisadero with entrances on Post and Geary. Across from Mt. Zion Hospital.

<b>Rentable Square Ft.:</b>	± 500 Square Feet, Approx. 500+ of Shared office space
<b>Total Sqft.:</b>	Approx. 1,000
<b>Rent:</b>	\$2,100/Monthly
<b>Type:</b>	Industrial Gross

### Details

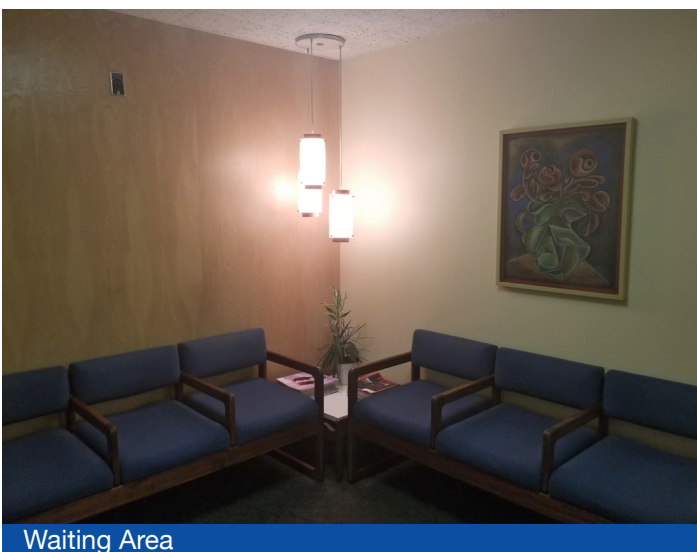
- » 2 exam rooms
- » 1 office
- » 1 shared waiting room



Entrance Hallway to Building



Office



Waiting Area



Exam Room #1

FOR MORE INFORMATION,  
PLEASE CONTACT:

PRISCILLA WILDER | Leasing & Sales Associate  
C: (510) 367-5355 | E: priscilla@starboardnet.com  
CA BRE# 0190366

**STARBOARD**  
COMMERCIAL REAL ESTATE  
ENTREPRENEURIAL • LOCAL • INDEPENDENT

**TCN**  
WORLDWIDE  
REAL ESTATE SERVICES



FOR MORE INFORMATION,  
PLEASE CONTACT:

PRISCILLA WILDER | Leasing & Sales Associate  
C: (510) 367-5355 | E: priscilla@starboardnet.com  
CA BRE# 0190366





**Divisadero Retail Row offers numerous retail businesses, banks, cafes, restaurants & services most within walking distance**



**FOR MORE INFORMATION,  
PLEASE CONTACT:**

**PRISCILLA WILDER** | Leasing & Sales Associate  
 C: (510) 367-5355 | E: priscilla@starboardnet.com  
 CA BRE# 0190366

