

1328 Mission Street

San Francisco, CA 94103



STARBOARD CRE
LOCAL • INDEPENDENT • ENTREPRENEURIAL



For Lease

Award-winning architect lofts

MARK MEIER

mark@starboardcre.com
415.299.7042

CRAIG HANSSON

craig@starboardcre.com
415.710.7768

TCN
WORLDWIDE
REAL ESTATE SERVICES

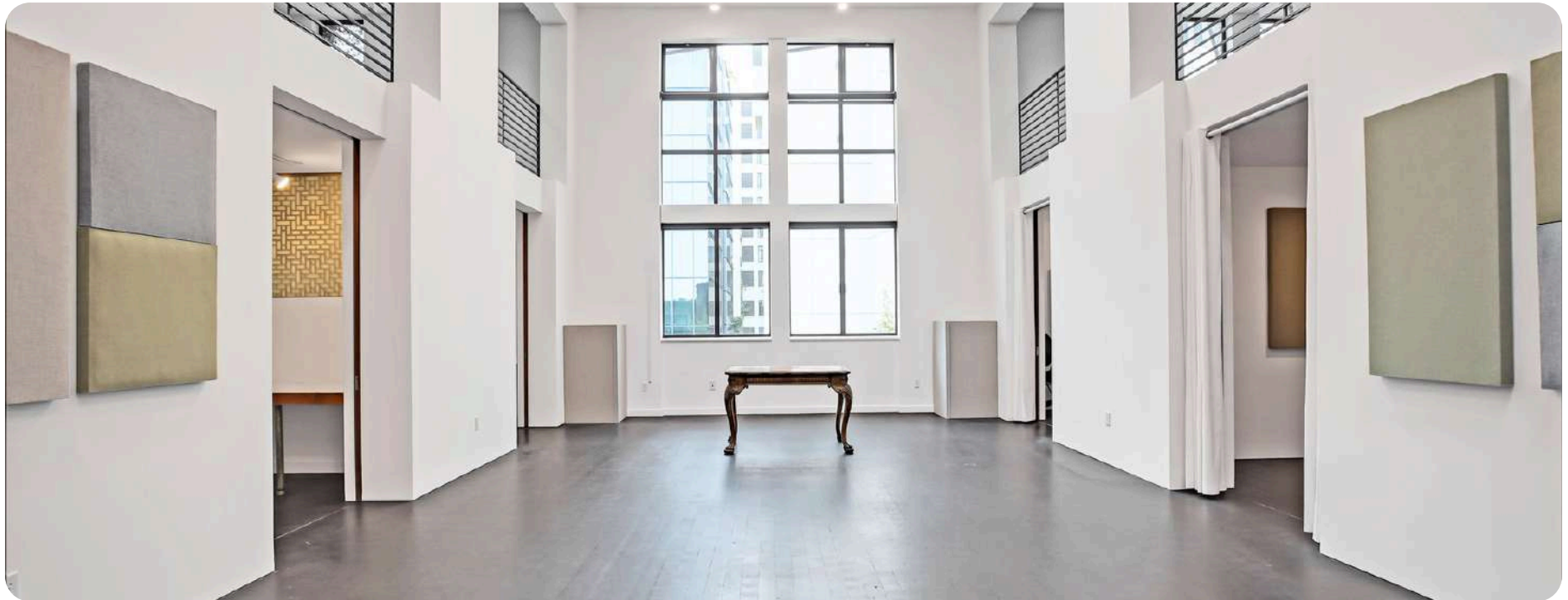
1328 Mission Street

Property Summary

- **Rate:** Negotiable
- **Term:** Negotiable

Executive Summary

1328 Mission Street is comprised of modern office lofts designed by the award-winning architect, Daniel Solomon. An oasis with a serene bamboo garden view, conveniently positioned in the MidMarket/Soma neighborhood.



SUITE 7:

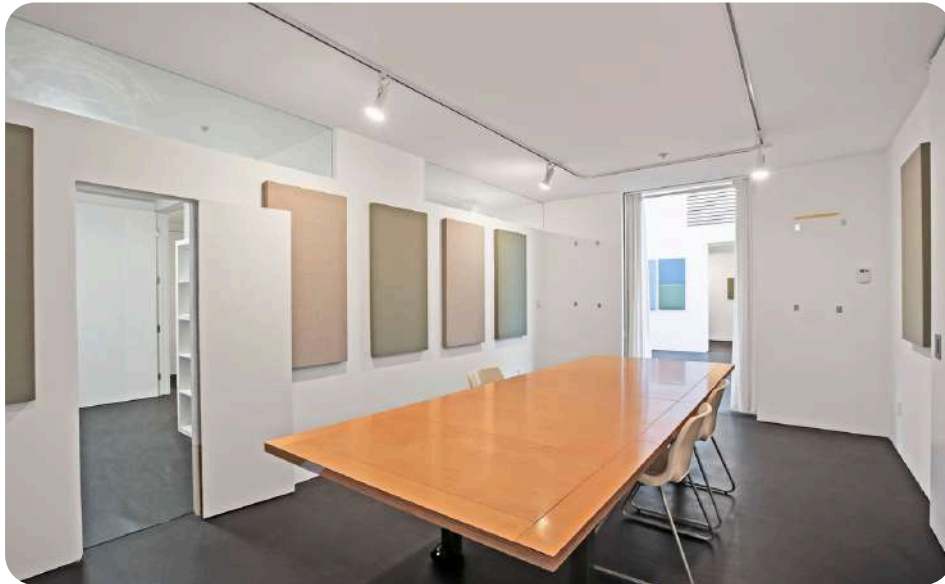
- ± 1000 SF
- Open layout
- High ceilings
- Great natural light
- One bathroom
- One kitchenette
- Upstairs mezzanine area

SUITE 8/10:

- ± 4,692 SF
- Spacious open office loft with multiple sides of natural light
- Efficient mix of conference rooms, private rooms, and open space
- Kitchen
- 3 restrooms, accessible
- Passenger elevator access
- Parking available



IMAGES



SUITE 9/11:

- ± 2,545 SF
- High ceilings with amazing natural light
- Open layout spanning two floors overlooking city views and hills
- Kitchen
- 2 private rooms
- Passenger elevator access
- Parking available



IMAGES

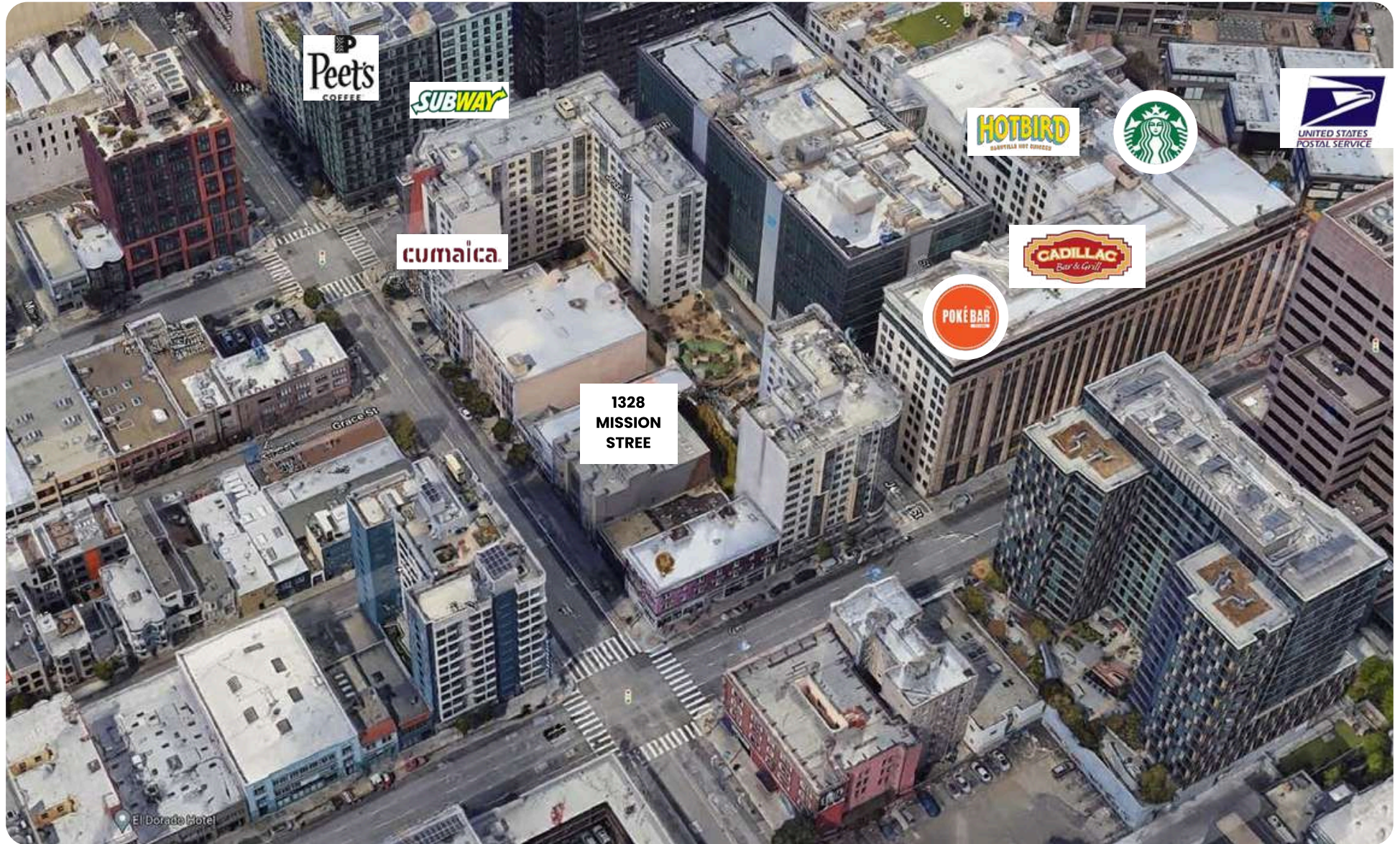


IMAGE



STARBOARD CRE
LOCAL • INDEPENDENT • ENTREPRENEURIAL

Amenities



AGENTS



Craig Hansson

Vice President

craig@starboardcre.com

CELL: 415.710.7768

CA DRE #01841643

Call

View Profile



Mark Meier

Senior Leasing & Sales Associate

mark@starboardcre.com

CELL: 415.299.7042

CA DRE #02047169

Call

View Profile



STARBOARD CRE
LOCAL • INDEPENDENT • ENTREPRENEURIAL



STARBOARD CRE
LOCAL • INDEPENDENT • ENTREPRENEURIAL

STARBOARDCRE.COM
OFC. PHONE 415.765.6900
49 POWELL STREET, SAN FRANCISCO, CA 94102



Unique Vision

We see what others miss

Local Market Leader

No one knows Northern
California like we do

Full-Service Firm

We do it all

Locally based, and technology-forward, our brokers are highly qualified experts backed by a full-service, in-house support team who understand the intricacies of San Francisco real estate. Starboard CRE brings decades of brokerage experience representing over 600 million square feet of space with an aggregate lease value of over 10 billion and investments sold over 3 billion.

CA DRE# 01103056

TCN
WORLDWIDE
REAL ESTATE SERVICES

AREA
ASSOCIATED REALTY OF THE AMERICAS