



FOR LEASE

*Creative Full Ground
Floor Space for Lease
in SoMa District*

FOR LEASE | 6,800 SF SPACE IN SOMA DISTRICT

984 FOLSOM STREET

San Francisco, CA 94107



STARBOARD CRE

LOCAL · INDEPENDENT · ENTREPRENEURIAL

ABOUT 984 FOLSOM STREET

- ✓ Tech startups have fueled the majority of office leasing in SoMa in recent years, attracted to the submarket's creative office space in low and mid-rise buildings that originally served as warehouses or other industrial uses, as well as the area's connectivity to Silicon Valley via Caltrain
- ✓ 3 Medium Conference Rooms
- ✓ 1 Large Conference Room
- ✓ Brand NEW Top of the Line Split HVAC System
- ✓ 11 Ft. High Ceilings with 2 Skylights
- ✓ All improvements are subject to a mutually agreed space plan between owner and tenant



E: craig@starboardnet.com

[Schedule Private Tour](#)

CA BRE# 01841643



CRAIG HANSSON
Vice President
CALL 415-710-7768

The Central Subway project, targeted to open in 2022, will serve over 35,000 new customers per day. This new service will connect residents, visitors and businesses from Bayview, South of Market, Mission Bay to Financial District, Union Square, Moscone Center, and Chinatown.

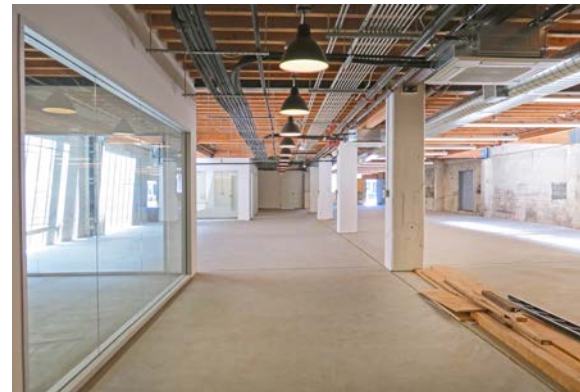
RENTABLE SF: ± 6,800 SF

PRICE: NEGOTIABLE

LEASE TYPE: INDUSTRIAL GROSS

TERM: 3 TO 5 YEARS

FOR LEASE | 6,800 SF SPACE IN SOMA DISTRICT

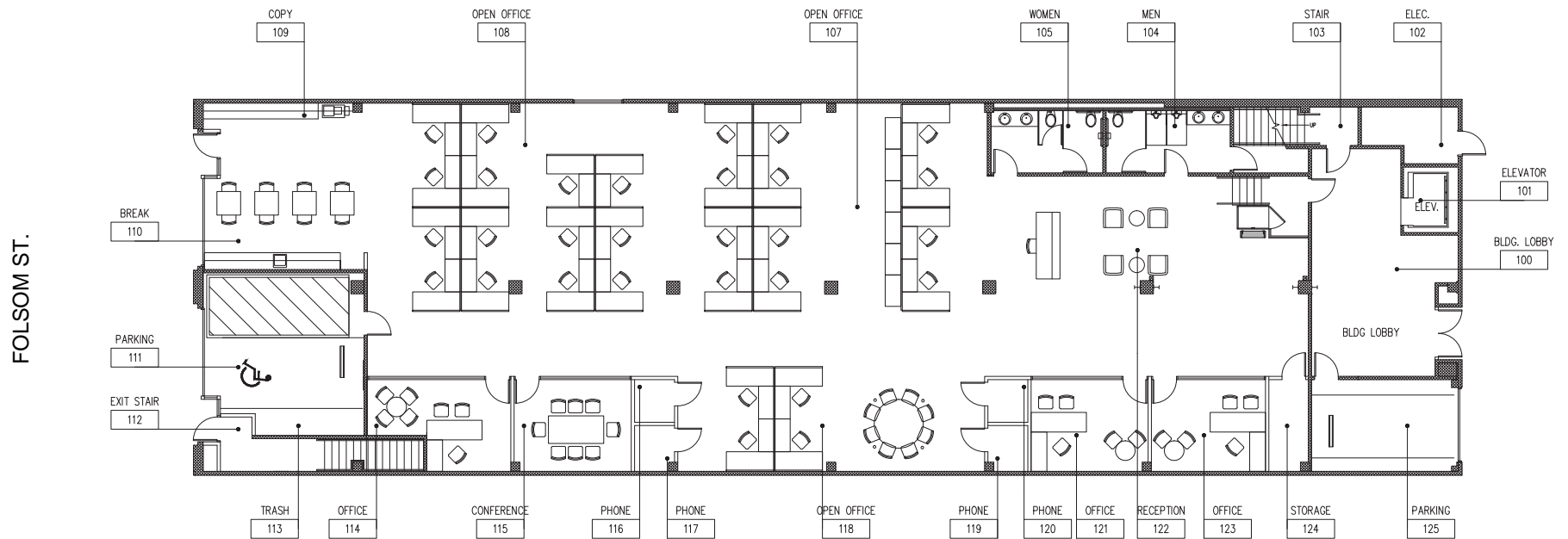


Ground Floor Plan

FOR LEASE

FOR LEASE | 6,800 SF SPACE IN SOMA DISTRICT

Approx 6,800 SF

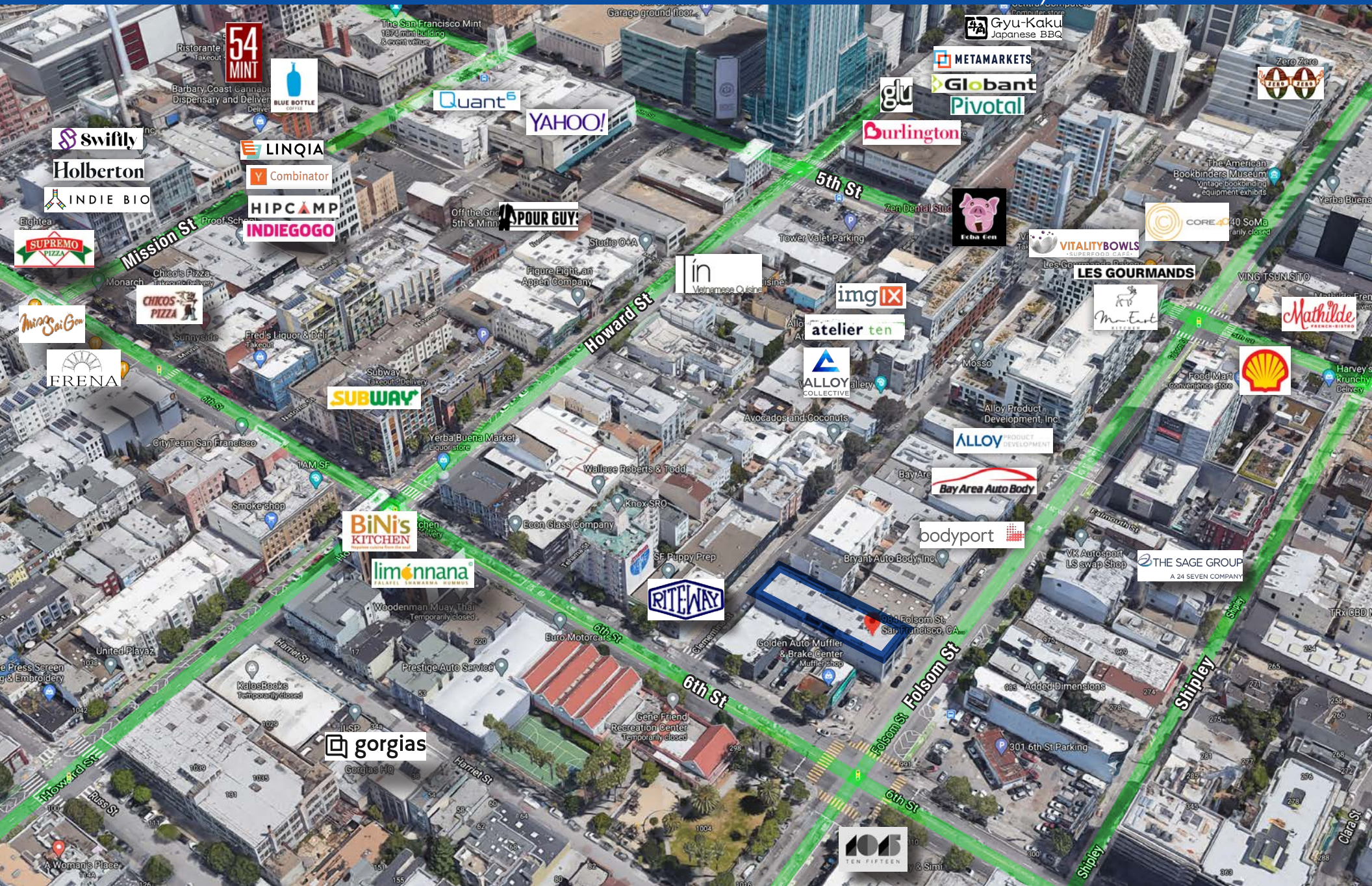


E: craig@starboardnet.com

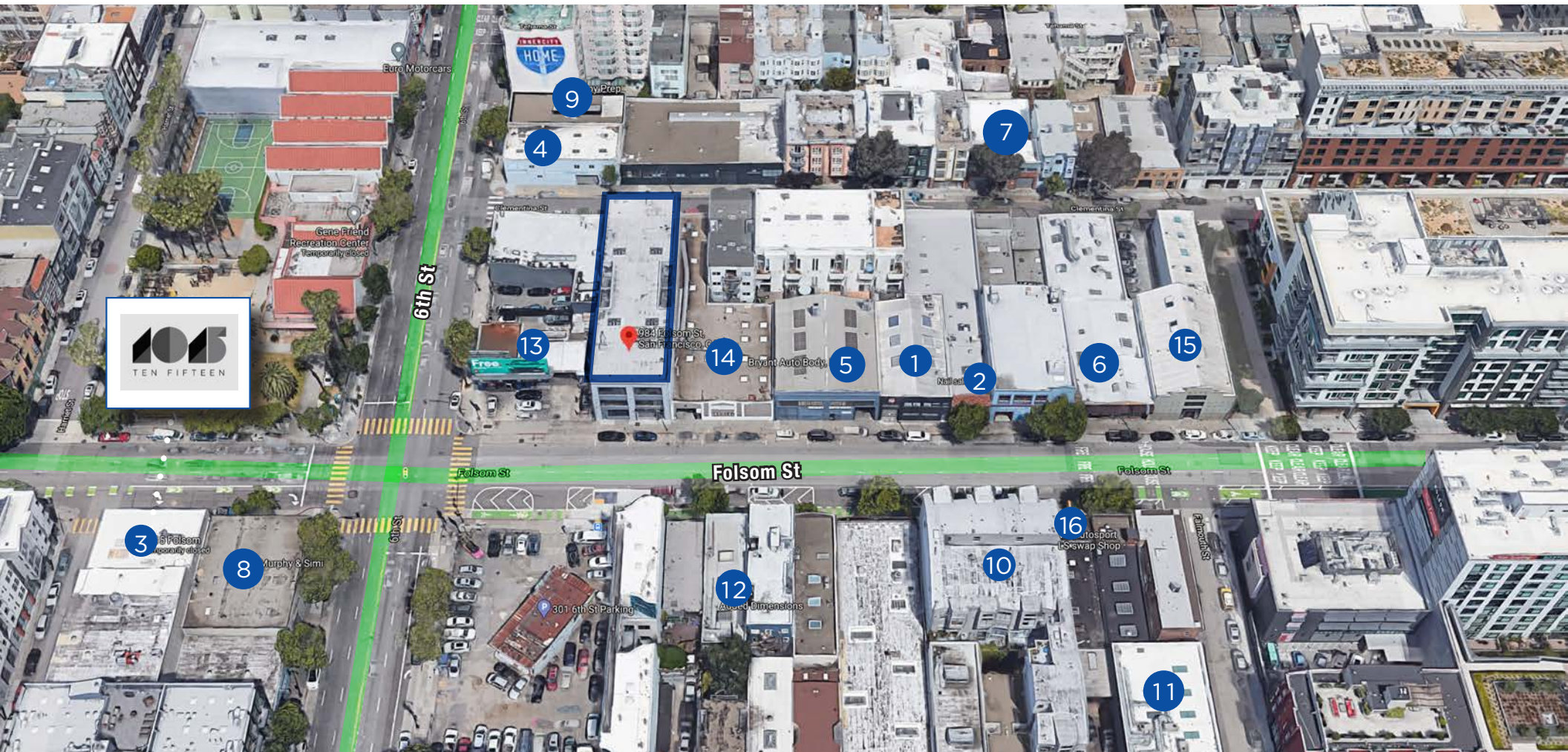
Schedule Private Tour

Macro Points of Interest

FOR LEASE



- 1 BODYPORT
- 2 NELS BEAUTY CLUB
- 3 1015 FOLSOM
- 4 RITE-WAY ELECTRIC
- 5 BRYANT AUTO BODY, INC.
- 6 BAY AREA AUTO BODY
- 7 AVOCADOS AND COCONUTS
- 8 MURPHY & SIMI CO
- 9 SF PUPPY PREP
- 10 REBOUND ENERGY
- 11 THE SAGE GROUP
- 12 ADDED DIMENSIONS INC
- 13 GOLDEN AUTO MUFFLER & BRAKE CENTER
- 14 AUTO STORAGE OF SAN FRANCISCO
- 15 ALLOY PRODUCT DEVELOPMENT, INC.
- 16 VK AUTOSPORT LS SWAP SHOP





*The largest,
independently
-owned commercial
real estate firm in
San Francisco.*

Unique Vision

We see what others miss

Local Market Leader

No one knows Northern
California like we do

Full Service Firm

We do it all

HANS HANSSON
President / Broker of Record
CALL 415-517-2589
CA BRE# 00872902

CRAIG HANSSON
Vice President
CALL 415-710-7768
CA BRE# 01841643

Since 1991, Starboard CRE has organically cultivated substantial relationships with investors, tenants, developers, architects, and accountants throughout the San Francisco-Bay Area. Locally based, Starboard agents are positioned to distinguish the San Francisco real estate market like no other, knowing the ins and outs of the city and having access to networks of more than 2,000 buildings and over 100 million square feet of space. Through these networks and unique inside knowledge, Starboard CRE makes it achievable to assist buyers quickly in finding their ideal space in one of the most unique real estate markets in the world.

