

New Unbelievable Rate:
Starting from \$19.00 (IG)

FOR LEASE

505 Beach St.

San Francisco, CA 94133

Multiple offices with views
just steps from North Beach
with ample parking

[View Online](#)



STARBOARD CRE
LOCAL • INDEPENDENT • ENTREPRENEURIAL

STARBOARDCRE.COM
OFC. PHONE 415.765.6900
49 POWELL STREET, SAN FRANCISCO, CA 94102

Beautiful views are available for lease in prime Fisherman's Wharf location.

505 Beach Street is just steps from North Beach with ample parking in nearby garages and plenty of metered street parking (additional parking is available on-premises for \$200 monthly).

- Nearby transportation includes Historical Muni F & E lines, Bus Lines - 30, 47, 91
- Famous Cable Car Line on Powell & Hyde Street and Powell & Mason
- Great amenities close by - The Anchorage, North Point Shopping Center, and Trader Joe's



Floor	1st Floor
Square Ft.	± 3,260 SF
Rate	Starting from \$19.00 PSF (IG)
Term	3 to 5 years
Divisible	The space can be divided into 2 suites of approximately 1750 square feet, each

HIGHLIGHTS

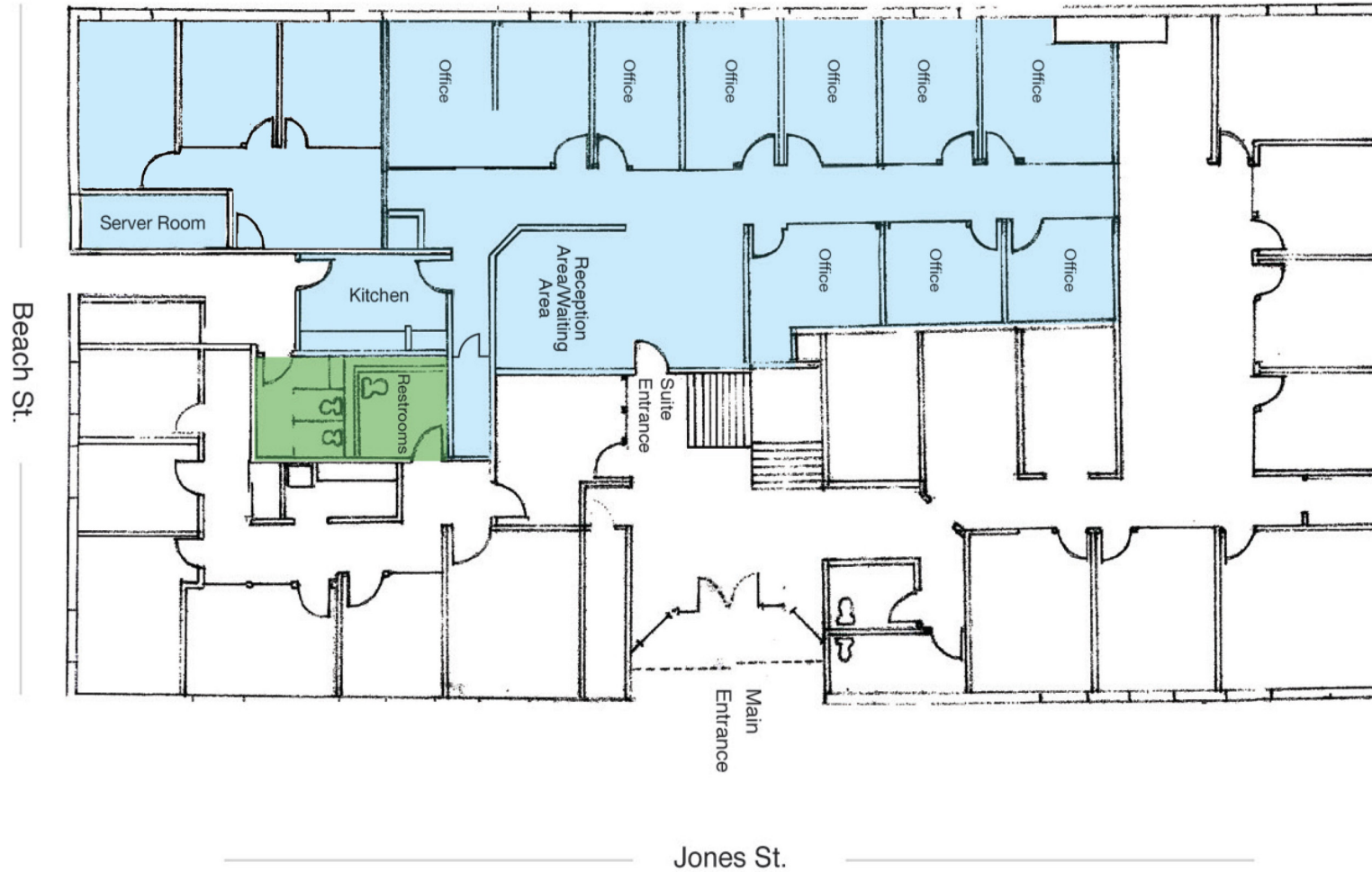
- Reception & Lounge Area
- Mix Use of Private Offices
- Conference Rooms of Different Sizes
- Convenient Client Parking Across the Street
- Great Natural Light
- MUNI F Line - Great Transportation Options





SUITE 110 | FLOORPLAN

FOR LEASE



Floor	2nd Floor
Square Ft.	± 3,420 SF
Rate	Starting from \$19.00 PSF (IG)
Term	3 to 5 years
Note	Suites 210 & 220 can be combined for a total of 4,545 SF of office space

HIGHLIGHTS

- 6 Private Office
- Conference Room
- Open Cubicle Area
- 2 Balcony Outdoor Seating Area
- Kitchenette
- Great Natural Light
- Large Windows Line Floor to Ceiling





Floor	2nd Floor
Square Ft.	± 1,230 SF
Rate	Starting from \$19.00 PSF (IG)
Term	3 to 5 years
Note	Suites 210 & 220 can be combined for a total of 4,545 SF of office space

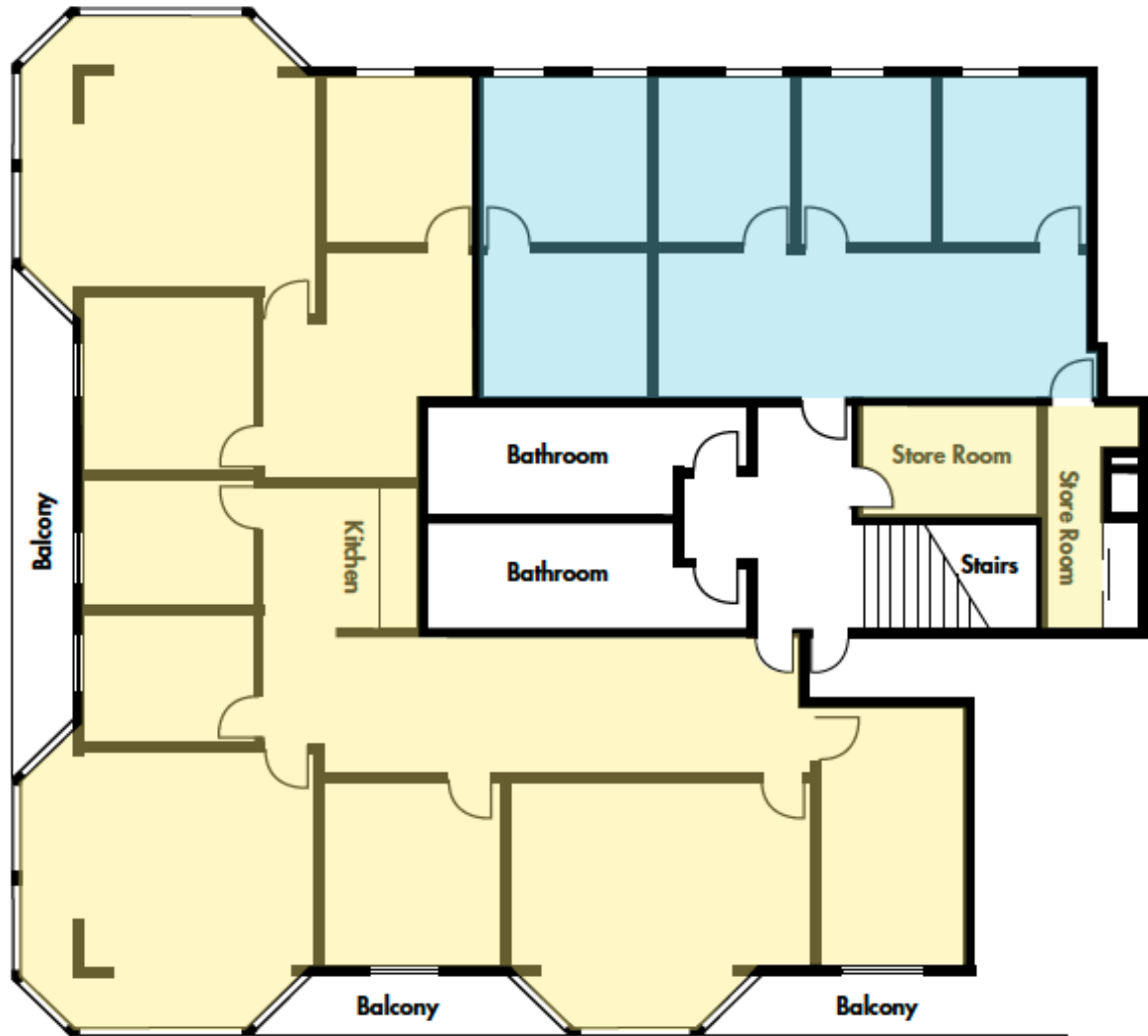
HIGHLIGHTS

- Great Natural Light
- 5 Private Offices
- Medium Size Open Plan Area



SUITE 210 & 220 | FLOORPLAN

FOR LEASE



☐ = Suite 210: ±3,420 SF

☐ = Suite 220: ±1,125 SF



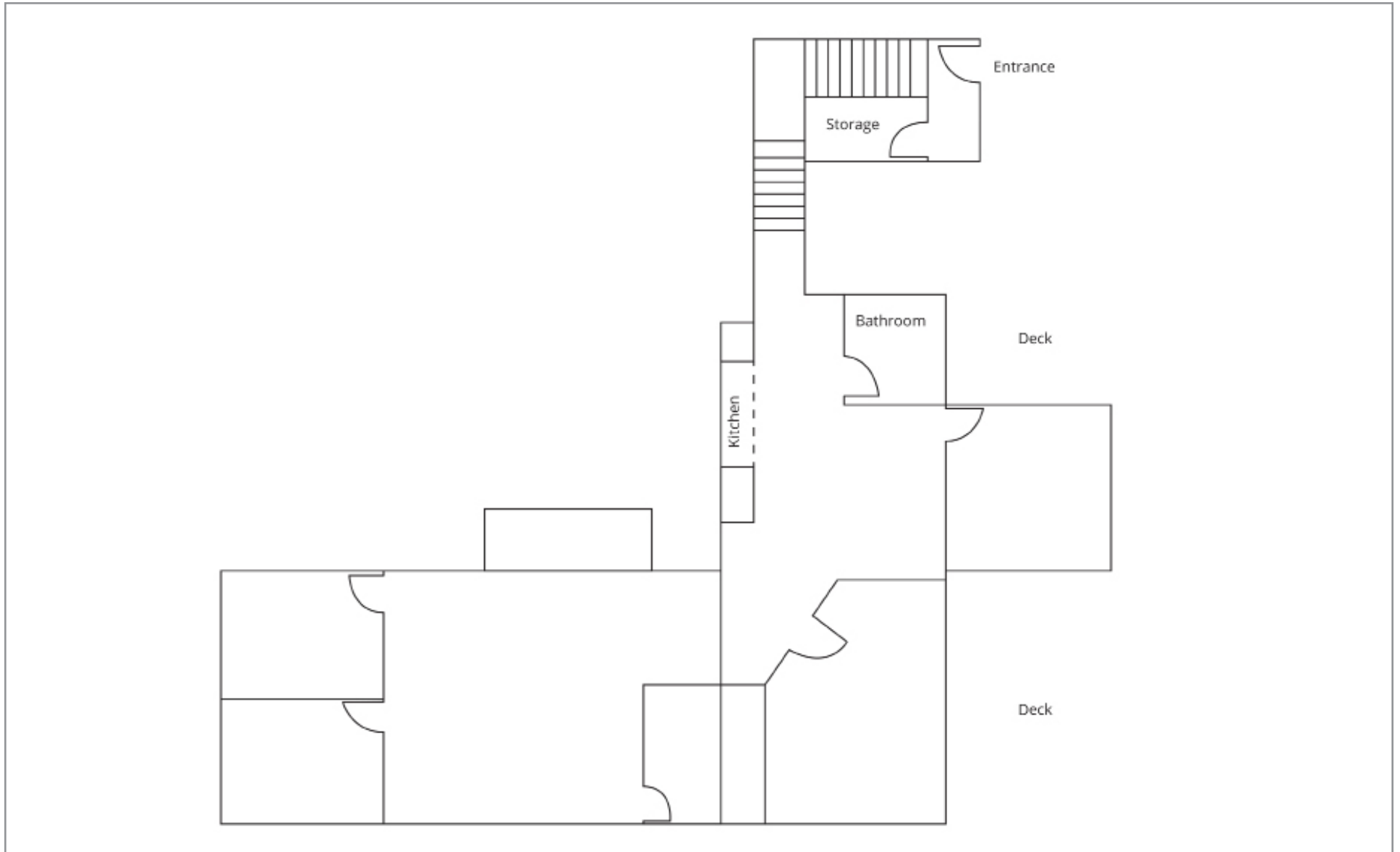
Floor	3rd Floor
Square Ft.	± 2,080 SF
Rate	Starting from \$19.00 PSF (IG)
Term	3 to 5 years
Note	The space can be combine with Suite 210

HIGHLIGHTS

- 4 Private Offices
- Medium Size Open Area
- Open Conference Area
- Kitchenette
- 2 Outdoor Seating Areas
- Great Natural Light
- Server Room









STARBOARD CRE
LOCAL • INDEPENDENT • ENTREPRENEURIAL

STARBOARDCRE.COM
OFC. PHONE 415.765.6900
49 POWELL STREET, SAN FRANCISCO, CA 94102



The largest,
independently -owned
commercial real estate
firm in San Francisco.

Unique Vision

We see what others miss

Local Market Leader

No one knows Northern
California like we do

Full Service Firm

We do it all

HANS HANSSON

President / Broker of Record
CALL 415-517-2589
hans@starboardcre.com
CA BRE# 00872902

CRAIG HANSSON

Vice President
CALL 415-710-7768
craig@starboardcre.com
CA BRE# 01841643

Locally based, technology forward, our brokers are highly qualified experts backed by a full-service, in-house support team who understand the intricacies of San Francisco real estate. Starboard CRE brings decades of brokerage experience representing over 600 million square feet of space with an aggregate lease value of over 10 billion and investments sold over 3 billion.

DRE# 01103056

