

# 505 BEACH STREET

For Lease | Creative Offices



**STARBOARD CRE**  
LOCAL • INDEPENDENT • ENTREPRENEURIAL



**CRAIG HANSSON**  
craig@starboardcre.com  
415.710.7768

**HANS HANSSON**  
hans@starboardcre.com  
415-517-2589

**TCN**  
WORLDWIDE  
REAL ESTATE SERVICES

# 505 BEACH STREET

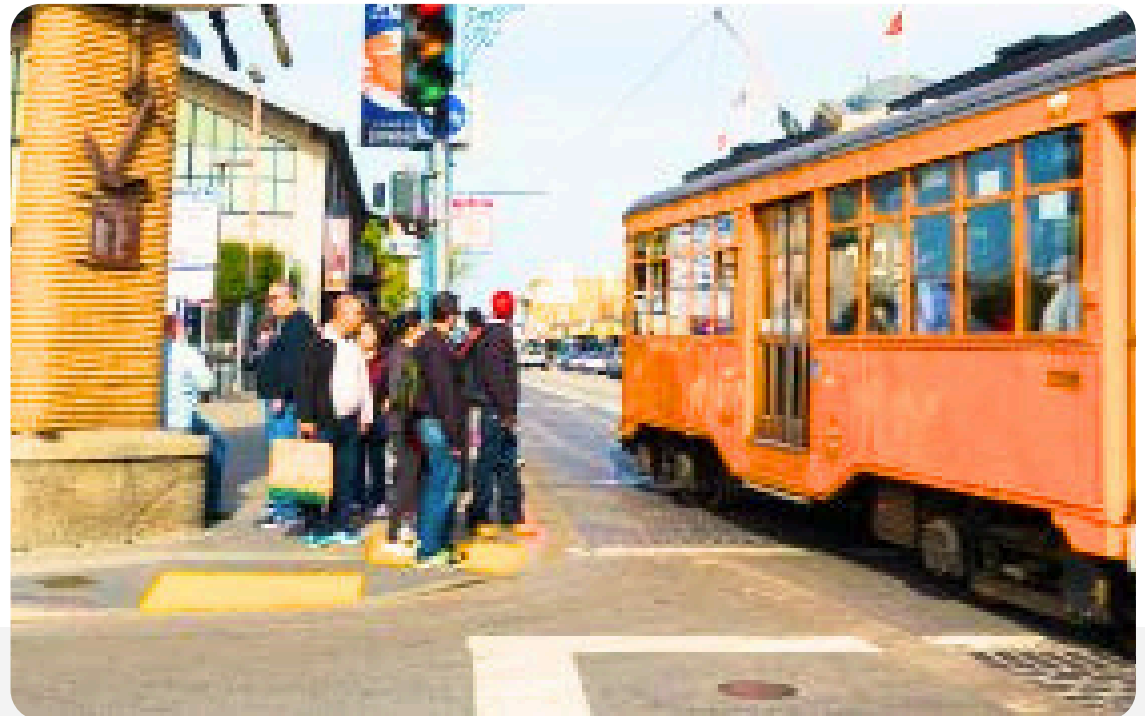
## Property Summary

- **Address:** 505 Beach Street
- **Property Type:** Creative Office
- **Term:** 3 to 5 years

Beautiful views are available for lease in prime Fisherman's Wharf location.

505 Beach Street is just steps from North Beach with ample parking in nearby garages and plenty of metered street parking (additional parking is available on-premises for \$200 monthly).

- Nearby transportation includes Historical Muni F & E lines, Bus Lines - 30, 47, 91
- Famous Cable Car Line on Powell & Hyde Street and Powell & Mason
- Great amenities close by - The Anchorage, North Point Shopping Center, and Trader Joe's



# SUITE 115 | OVERVIEW

---

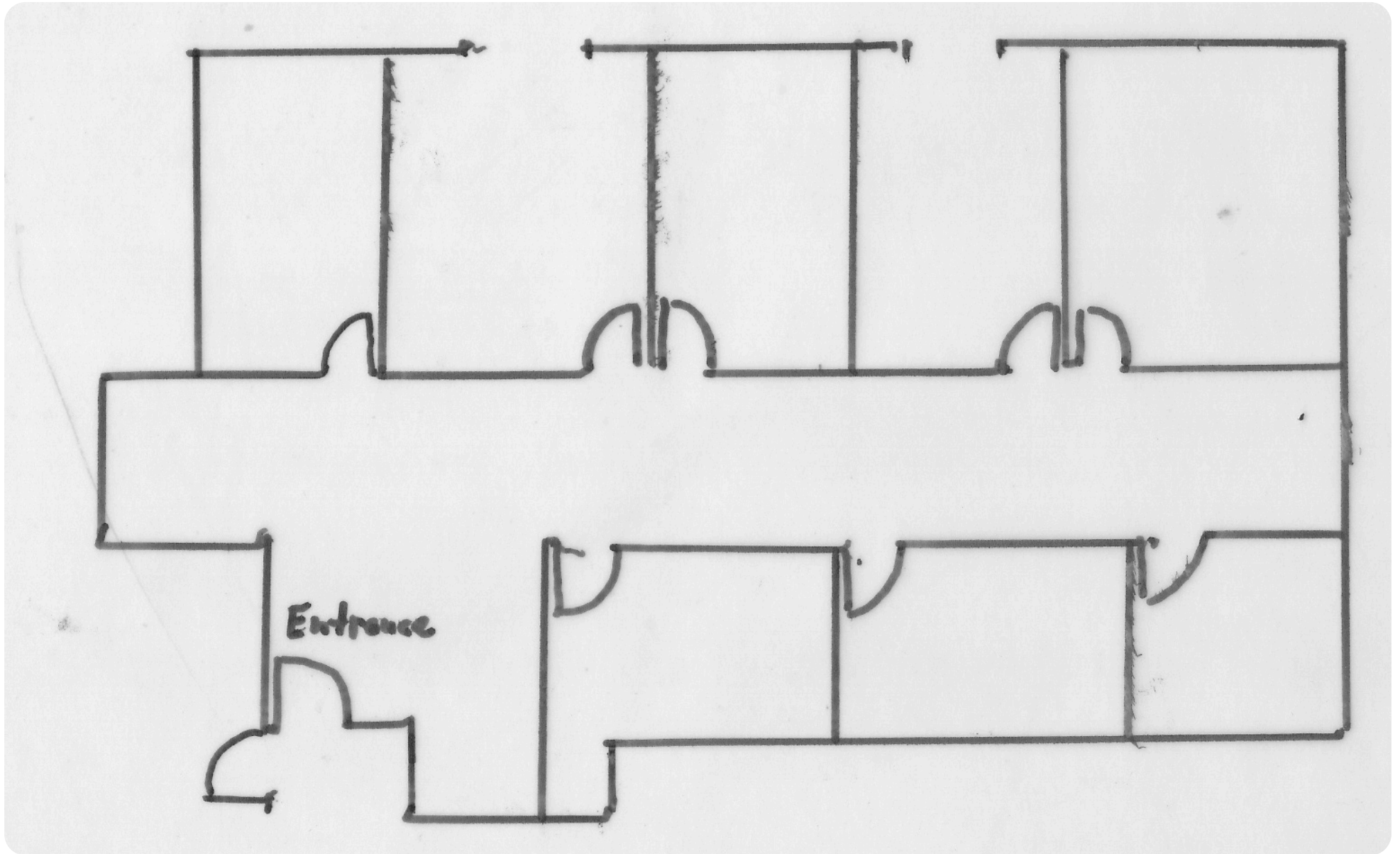
- **Floor:** 1st Floor
- **Square Ft:** ± 1,750 SF
- **Rate:** \$32
- **Term:** 3 to 5 years

## Highlights

- Reception & Lounge Area
- 8 Offices/Conference Meeting Rooms
- Convenient Client Parking Across the Street
- Great Natural Light
- MUNI F Line - Great Transportation Options



# SUITE 115 | FLOORPLAN



# SUITE 210 | OVERVIEW

---

- **Floor:** 2nd Floor
- **Square Ft:** ± 3,420 SF
- **Rate:** \$32
- **Term:** 3 to 5 years
- **Note:** Suites 210 & 220 can be combined for a total of 4,650 SF of office space

## Highlights

- 6 Private Office
- Conference Room
- Open Cubicle Area
- 2 Balcony Outdoor Seating Area
- Kitchenette
- Great Natural Light
- Large Windows Line Floor to Ceiling

**Note:** Suites 210 & 220 can be combined for 4,650 SF



# SUITE 210 | IMAGES



# SUITE 210 | IMAGES



# SUITE 220 | OVERVIEW

---

- **Floor:** 2nd Floor
- **Square Ft:** ± 1,230 SF
- **Rate:** \$32
- **Term:** 3 to 5 years
- **Note:** Suites 210 & 220 can be combined for a total of 4,650 SF of office space

## Highlights

- Great Natural Light
- 4 Private Offices
- Medium Size Open Plan Area





# SUITE 210 & 220 | FLOORPLAN



# SUITE 300 | OVERVIEW

---

- **Floor:** 3rd Floor
- **Square Ft:** ± 2,080 SF
- **Rate:** \$32
- **Term:** 3 to 5 years
- **Note:** The space can be combine with Suite 210

## Highlights

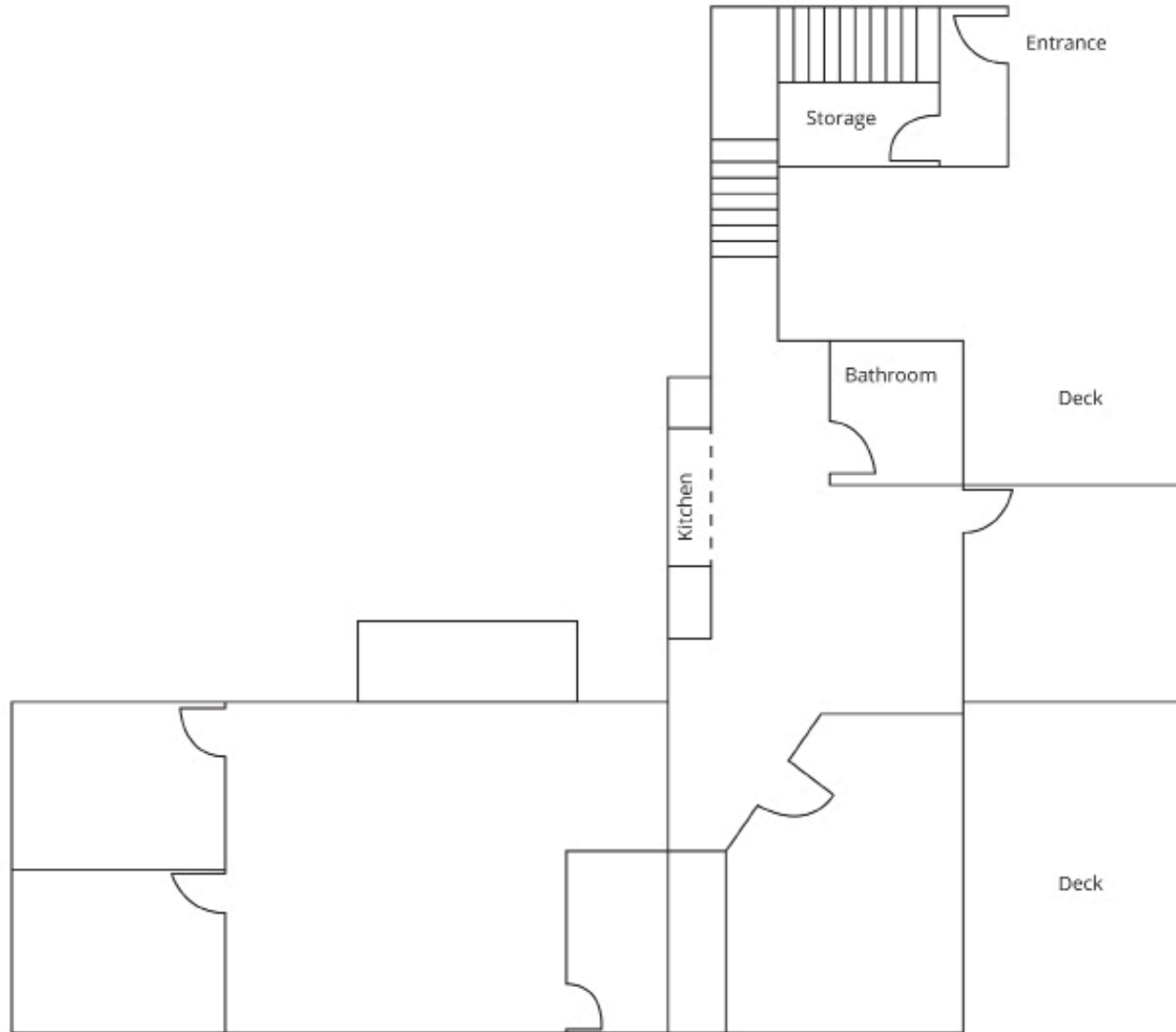
- 4 Private Offices
- Medium Size Open Area
- Open Conference Area
- Kitchenette
- 2 Outdoor Seating Areas
- Great Natural Light
- Server Room



# SUITE 300 | IMAGES



# SUITE 300 | FLOORPLAN



# 505 BEACH STREET

## Agents



### **Craig Hansson**

Vice President

[craig@starboardcre.com](mailto:craig@starboardcre.com)

CELL: 415.710.7768

CA DRE #01841643

Call

View Profile



### **HANS HANSSON**

President / Broker of Record

[hans@starboardcre.com](mailto:hans@starboardcre.com)

CELL: 415-517-2589

CA DRE # 00872902

Call

View Profile





**STARBOARD CRE**  
LOCAL • INDEPENDENT • ENTREPRENEURIAL

STARBOARDCRE.COM  
OFC. PHONE 415.765.6900  
49 POWELL STREET, SAN FRANCISCO, CA 94102



## Unique Vision

We see what others miss

## Local Market Leader

No one knows Northern  
California like we do

## Full-Service Firm

We do it all

Locally based, and technology-forward, our brokers are highly qualified experts backed by a full-service, in-house support team who understand the intricacies of San Francisco real estate. Starboard CRE brings decades of brokerage experience representing over 600 million square feet of space with an aggregate lease value of over 10 billion and investments sold over 3 billion.

**CA DRE# 01103056**

