



STARBOARD CRE
LOCAL • INDEPENDENT • ENTREPRENEURIAL

For Lease

333 Gellert Blvd

Daly City, CA 94015

Perfect Peninsula Office Building
+/-61,557 SF

Frank Vella
650.464.8062



STARBOARDCRE.COM
49 POWELL STREET, SAN FRANCISCO, CA 94102

Building:	333 Gellert Blvd, Daly City
Size:	± 61,557 SF
Year Built:	1977
Zoning:	C2
Term:	3-5 Years
Property Type:	office space

Highlights

- Strategically located close to Highway 280, BART, and SamTrans
- General office Space. Great for attorney, tech or various other office uses.
- Medical use allowed
- Beautifully landscaped atrium
- Tenant conference room
- 1,000 to 3,000 Sq. ft. suites available

AVAILABLE SPACES

For Lease

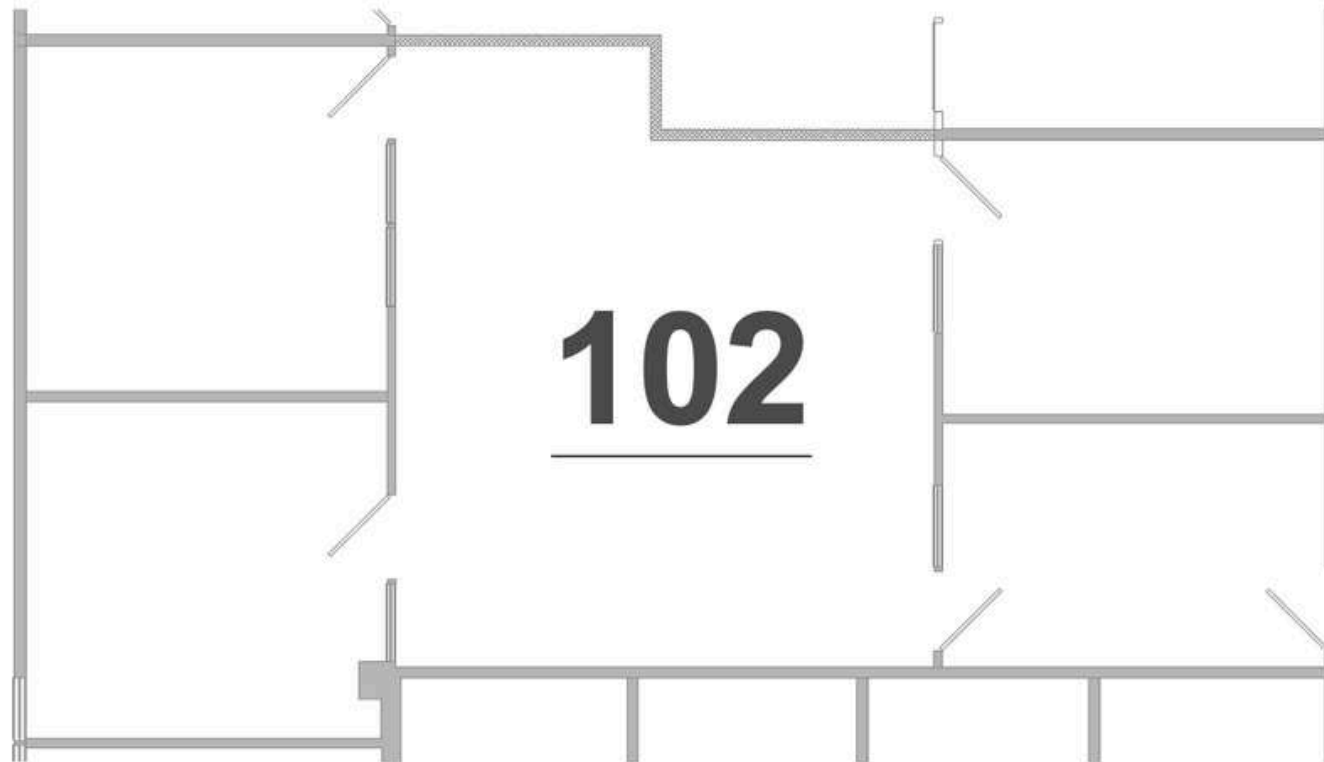
Floors	Suite	Use	SF Available	Available	Rent	Term
1st	100	Office	1,542 SF	To Be Demised: 672 + 870 unless interested party but can show	\$2.85/MG	3 – 5 Years
1st	102	Office	1,257 SF	To Be Demised: 652 + 610 unless interested party but can show	\$2.85/MG	3 – 5 Years
2nd	210B	Office	490 SF	Available Now	\$2.95/MG firm	3 – 5 Years
2nd	249	Office	2,799 SF	To Be Demised: 1,142 + 1,667 unless interested party but can show but can keep whole of a tenant needs to the space	\$2.85/MG	3 – 5 Years
2nd	225	Office	2582 SF	Current dentist Suite+ Equipment available	\$2.85/MG	3-5 Years

This information has been secured by Starboard CRE from sources believed to be reliable. It is not guaranteed and should be verified before closing any transaction.

STARBOARD CRE
LOCAL • INDEPENDENT • ENTREPRENEURIAL

FLOOR PLAN – SUITE 102

For Lease



This information has been secured by Starboard CRE from sources believed to be reliable. It is not guaranteed and should be verified before closing any transaction.

STARBOARD CRE
LOCAL • INDEPENDENT • ENTREPRENEURIAL

5TH FLOOR | IMAGES

For Lease



This information has been secured by Starboard CRE from sources believed to be reliable. It is not guaranteed and should be verified before closing any transaction.

STARBOARD CRE
LOCAL • INDEPENDENT • ENTREPRENEURIAL



Frank Vella

Broker Associate
frank@starboardcre.com
CELL: 650.464.8062
DRE # 01104977

[Call](#)[View Profile](#)



STARBOARD CRE
LOCAL • INDEPENDENT • ENTREPRENEURIAL

STARBOARDCRE.COM
OFC. PHONE 415.765.6900
49 POWELL STREET, SAN FRANCISCO, CA 94102



Unique Vision
We see what others miss

Local Market Leader
No one knows Northern
California like we do

Full-Service Firm
We do it all

Locally based, and technology-forward, our brokers are highly qualified experts backed by a full-service, in-house support team who understand the intricacies of San Francisco real estate. Starboard CRE brings decades of brokerage experience representing over 600 million square feet of space with an aggregate lease value of over 10 billion and investments sold over 3 billion.

CA DRE# 01103056

TCN
WORLDWIDE
REAL ESTATE SERVICES

AREA
ASSOCIATED REALTY OF THE AMERICAS