

1663 Mission Street

San Francisco CA 94103



STARBOARD CRE
LOCAL • INDEPENDENT • ENTREPRENEURIAL

For Lease Creative Offices

CRAIG HANSSON

craig@starboardcre.com
415.710.7768

HANS HANSSON

hans@starboardcre.com
415-517-2589



TCN
WORLDWIDE
REAL ESTATE SERVICES

1663 Mission Street

Property Summary

- **Property Type:** Creative Office
- **Lease Type:** Industrial Gross
- **Term:** 3 to 5 years

1663 Mission is centrally located at the intersection of SoMa, Mission Dolores, and Lower Haight/Hayes Valley, offering easy access to the 101 and amenities like gastropubs, breweries, and Target. Directly opposite, a well-lit parking facility provides easy access. The building features renovated common areas, an updated lobby, and modernized elevators, creating a flexible leasing opportunity suitable for various creative uses.

Highlights

- A security guard on site
- High-exposed ceilings with an industrial feel
- Variety of private offices and open areas with lots of natural light
- Excellent window line on both sides
- Immediate access and convenience to all forms of transportation and amenities
- Brightly lit parking facility sits conveniently across the street



LOBBY



SUITE 400

Suite: 400

Rentable SF: ±4,743

Price: \$24 SF/YR

Lease Type: Industrial Gross

Term: 3 to 5 years

Highlights

- Window Line East Side Views of the City
- 6 Offices in a Variety of Sizes
- Large Full Kitchen

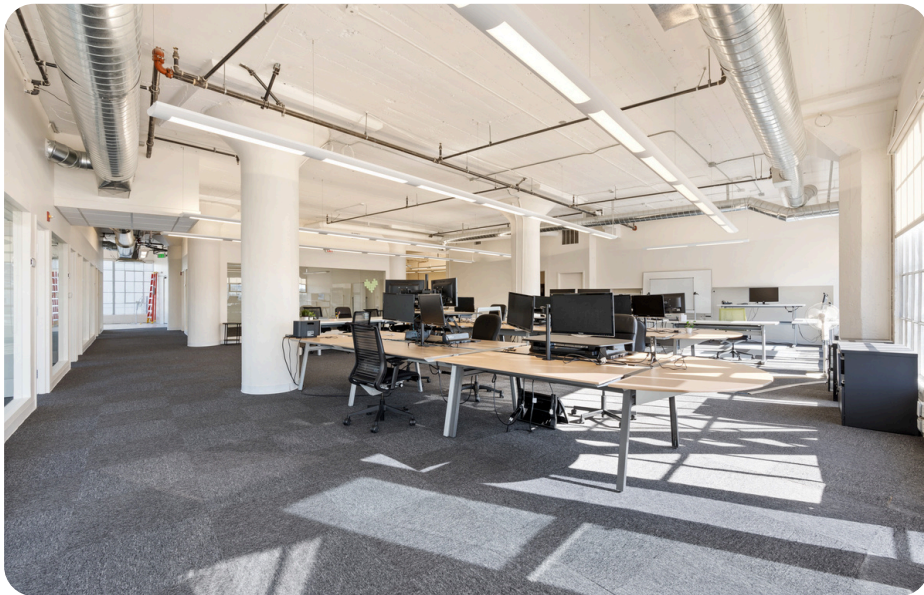


[3D Virtual Tour](#)

SUITES 400 | IMAGES



SUITES 400 | IMAGES



SUITES 400 | FLOORPLAN



SUITE 460

- **SUITE:** 460
- **Rentable SF:** ±3,459 SF
- **Price:** \$24 SF/YR
- **Lease Type:** Industrial Gross
- **Term:** 3 to 5 years

Highlights

- One conference room
- Two large offices
- Seven regular size offices
- Storage room
- Rest open plan
- Excellent Views

[3D Virtual Tour](#)



SUITES 460 | FLOORPLAN



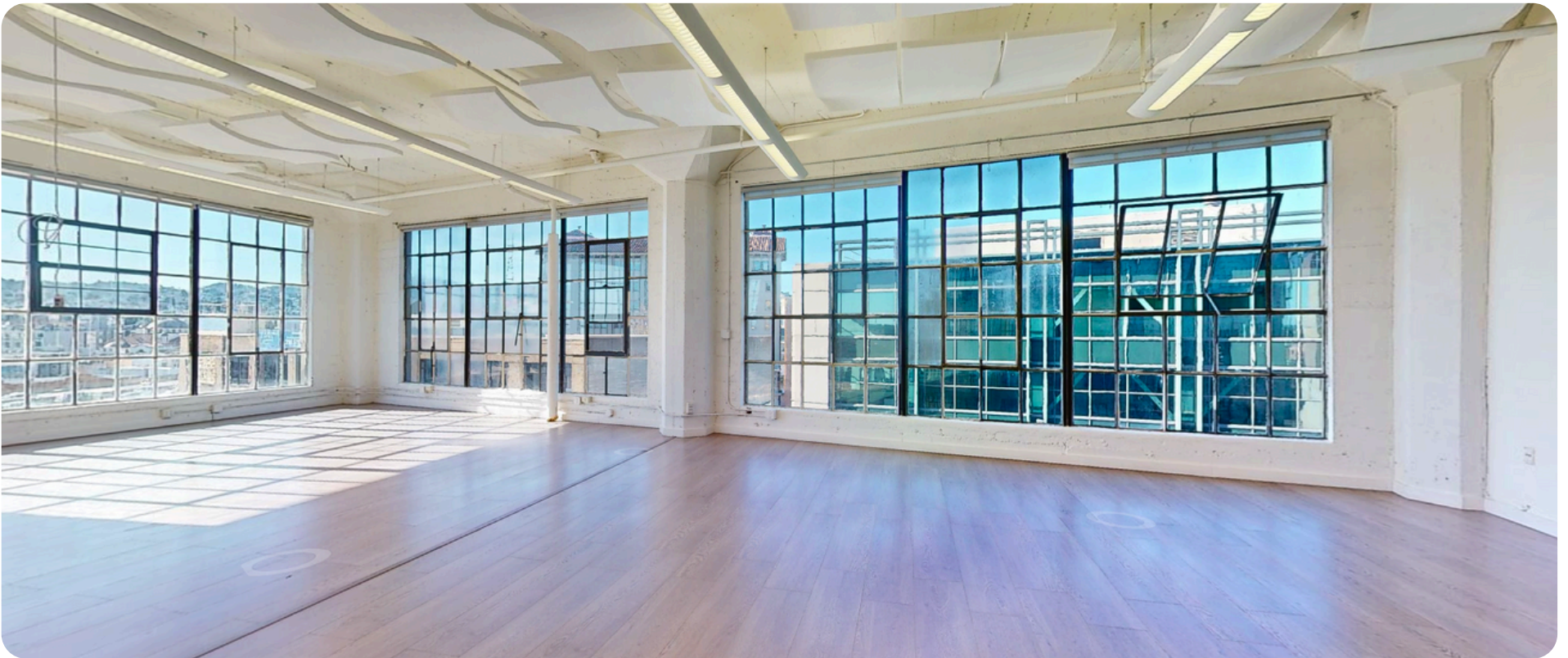
SUITE 520

- **SUITE:** 520
- **Rentable SF:** ± 3,000
- **Price:** \$24 SF/YR
- **Lease Type:** Industrial Gross
- **Term:** 3 to 5 years

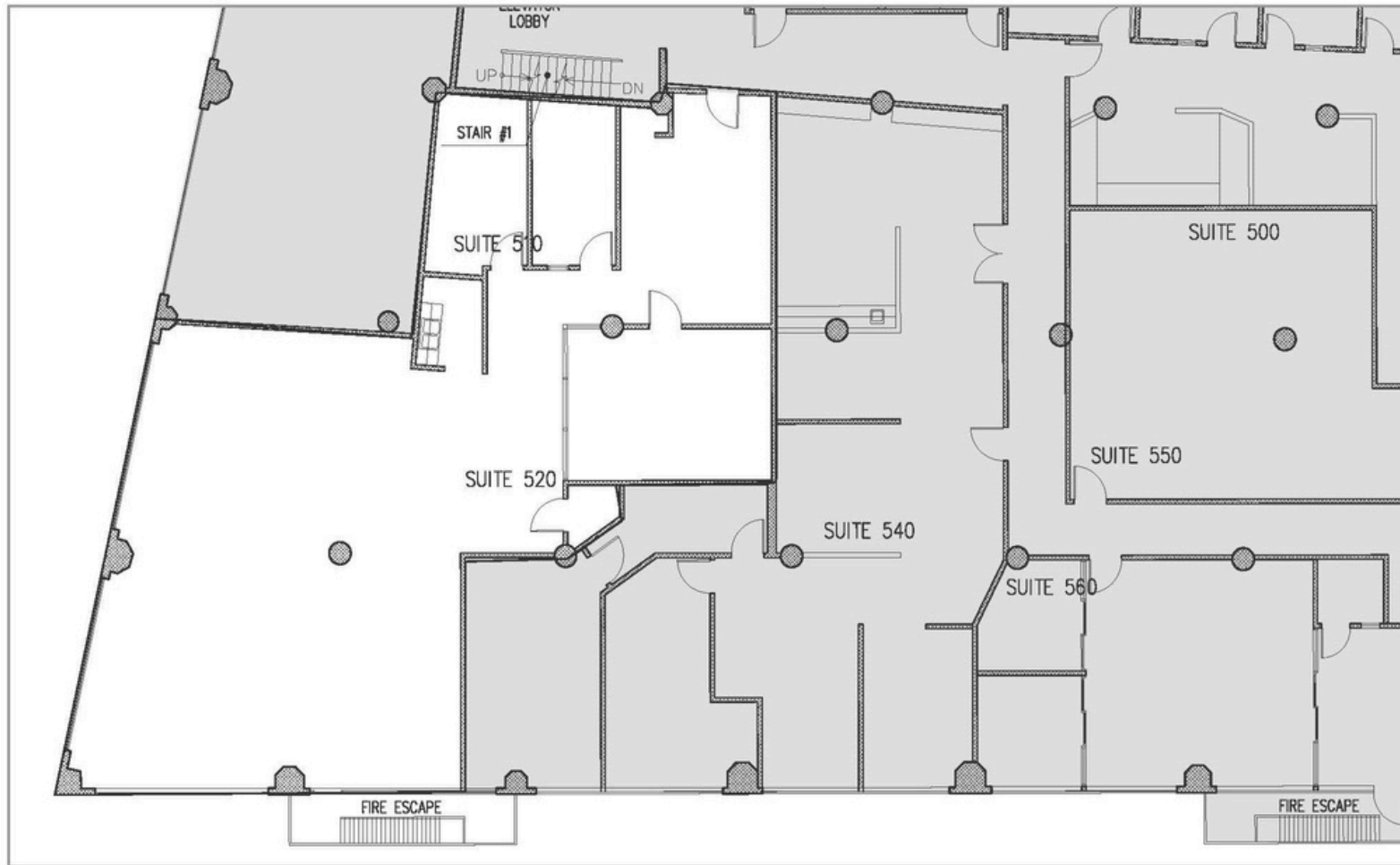
Highlights

- Large reception area
- Glass conference room
- Two interior offices with glass
- Kitchen
- Large open area
- Excellent window line
- Suites 520 and 510 can be combined

[3D Virtual Tour](#)



SUITE 520 – FLOORPLAN



AGENTS



Craig Hansson

Vice President

craig@starboardcre.com

CELL: 415.710.7768

CA DRE #01841643

Call

View Profile



HANS HANSSON

President / Broker of Record

hans@starboardcre.com

CELL: 415-517-2589

CA DRE # 00872902

Call

View Profile





STARBOARD CRE
LOCAL • INDEPENDENT • ENTREPRENEURIAL

STARBOARDCRE.COM

OFC. PHONE 415.765.6900

49 POWELL STREET, SAN FRANCISCO, CA 94102



Unique Vision

We see what others miss

Local Market Leader

No one knows Northern
California like we do

Full-Service Firm

We do it all

Locally based, and technology-forward, our brokers are highly qualified experts backed by a full-service, in-house support team who understand the intricacies of San Francisco real estate. Starboard CRE brings decades of brokerage experience representing over 600 million square feet of space with an aggregate lease value of over 10 billion and investments sold over 3 billion.



CA DRE# 01103056