



STARBOARD CRE
LOCAL • INDEPENDENT • ENTREPRENEURIAL

For Lease

1663 Mission St

San Francisco, CA 94103

Where SoMa, Mission Dolores, and
Lower Haight meet, with 101 access.

CRAIG HANSSON
415.710.7768

Hans Hansson
415.517.2589



STARBOARDCRE.COM
49 POWELL STREET, SAN FRANCISCO, CA 94102

1663 Mission pins right in the center of three vibrant areas: SoMa, Mission Dolores, and Lower Haight/Hayes Valley, with immediate access to the 101. Within walking distance, you'll find gastropubs, beer gardens, breweries, diverse eateries, and major retailers like Target.

A clean and brightly lit parking facility sits conveniently across the street from 1663 Mission, providing direct access to its multiple floors—all featuring renovated common areas designed to accommodate a variety of creative-flex environments.

Recent renovations include an updated lobby and elevators, enhancing the overall experience for tenants and visitors alike. The building offers a unique opportunity to lease the spaces you need now, with options for growth within each space.

HIGHLIGHTS

- A security guard on site
- High exposed ceilings with an industrial feel
- Variety of private offices and open areas with lots of natural light
- Excellent window line on both sides
- Immediate access and convenience to all forms of transportation and amenities
- Brightly lit parking facility sits conveniently across the street

SUITE 460 OVERVIEW

For Lease

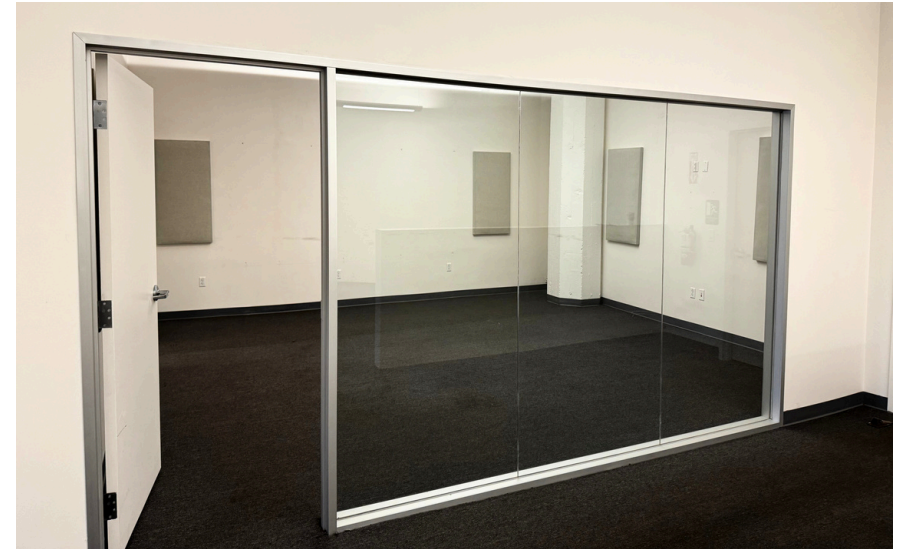
Suite: 460

Rentable SF: 3,459 SF

Price: \$24 sf/YR

Lease Type: Industrial Gross

Term: 3 to 5 years



Highlights

- One conference room
- Two large offices
- Seven regular size offices
- Storage room
- Rest open plan
- Excellent Views



This information has been secured by Starboard CRE from sources believed to be reliable. It is not guaranteed and should be verified before closing any transaction.

STARBOARD CRE
LOCAL • INDEPENDENT • ENTREPRENEURIAL

SUITE 460 FLOORPLAN

For Lease



This information has been secured by Starboard CRE from sources believed to be reliable. It is not guaranteed and should be verified before closing any transaction.

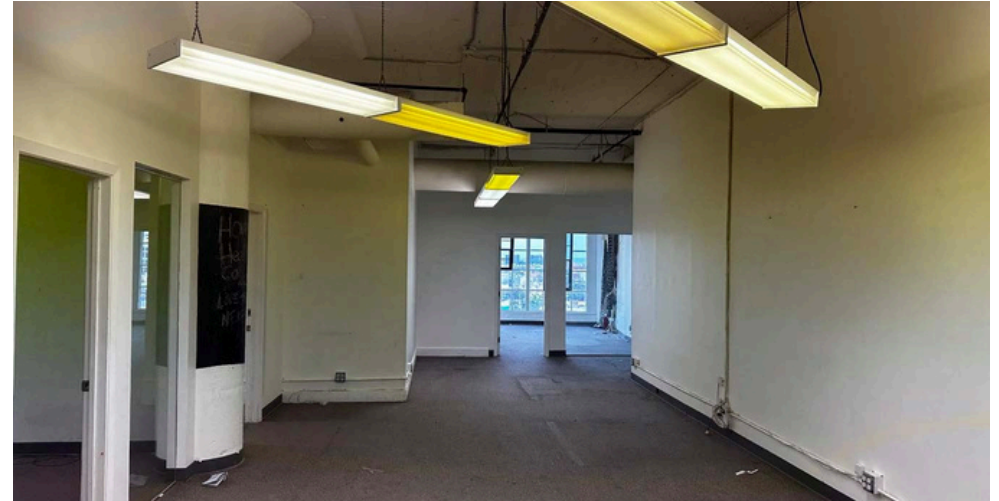
Suite: 504

Rentable SF: \pm 1,280

Price: \$24 sf/YR

Lease Type: Industrial Gross

Term: 3 to 5 years



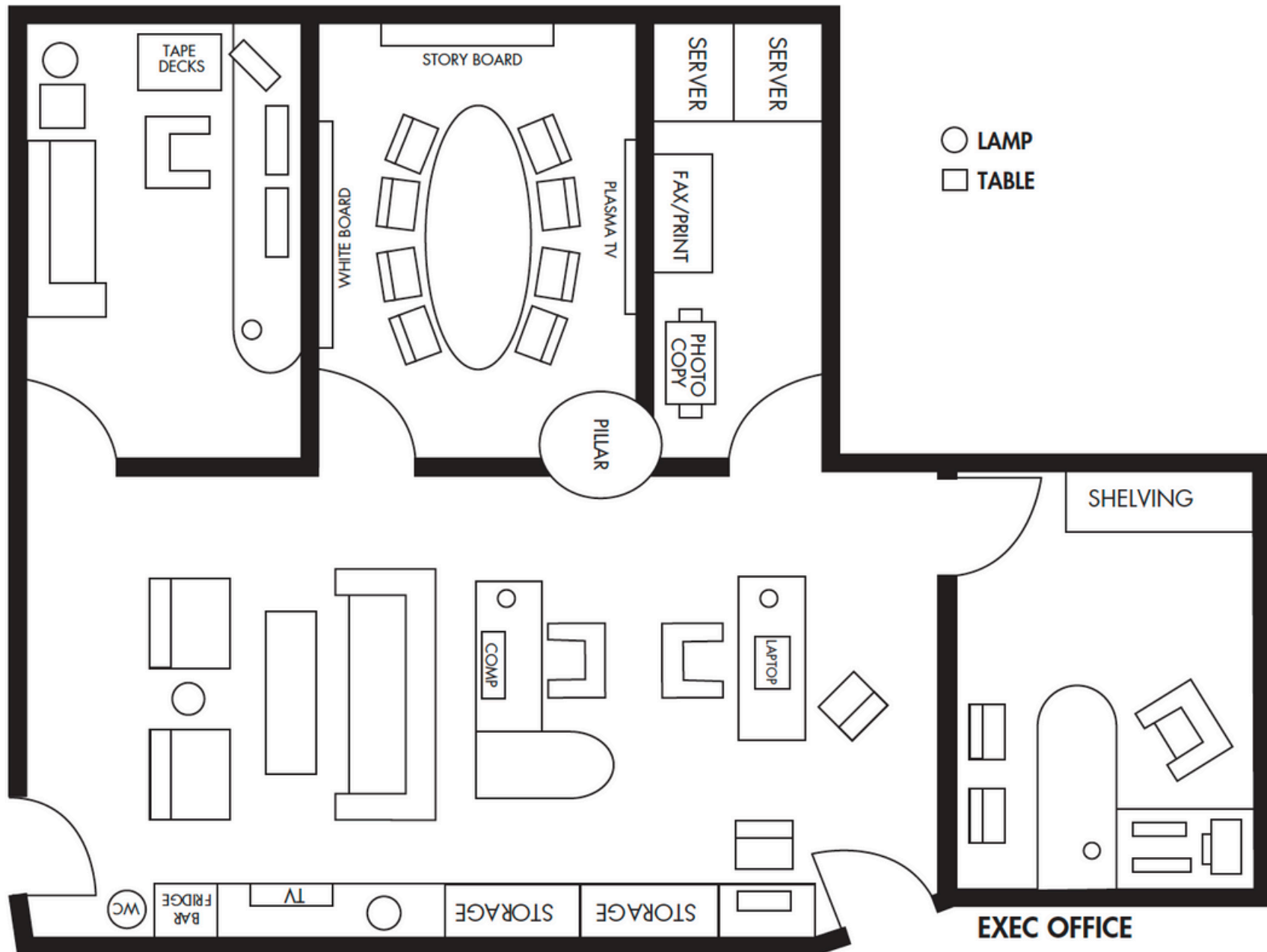
Highlights

- Two large offices
- One conference room
- Storage room
- Rest open plan
- Excellent Views



SUITE 504 FLOORPLAN

For Lease



This information has been secured by Starboard CRE from sources believed to be reliable. It is not guaranteed and should be verified before closing any transaction.

SUITE 520 OVERVIEW

For Lease

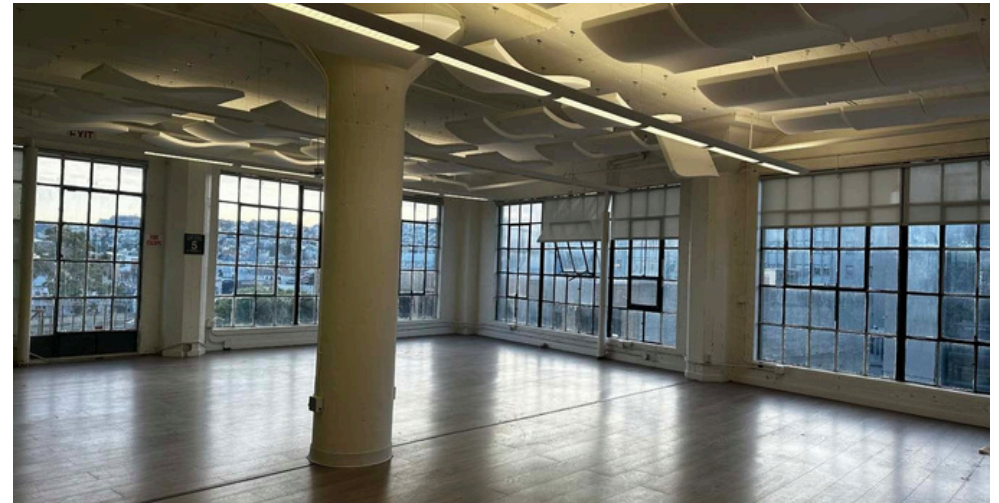
Suite: 520

Rentable SF: \pm 3,000

Price: \$24 sf/YR

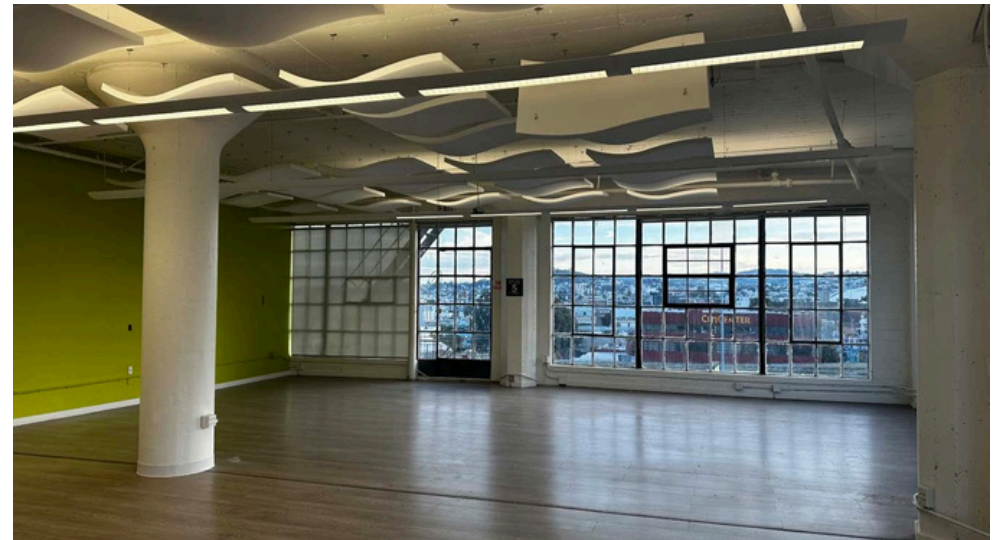
Lease Type: Industrial Gross

Term: 3 to 5 years



Highlights

- Large reception area
- Glass conference room
- Two interior offices with glass
- Kitchen
- Large open area
- Excellent window line
- Suites 520 and 510 can be combined

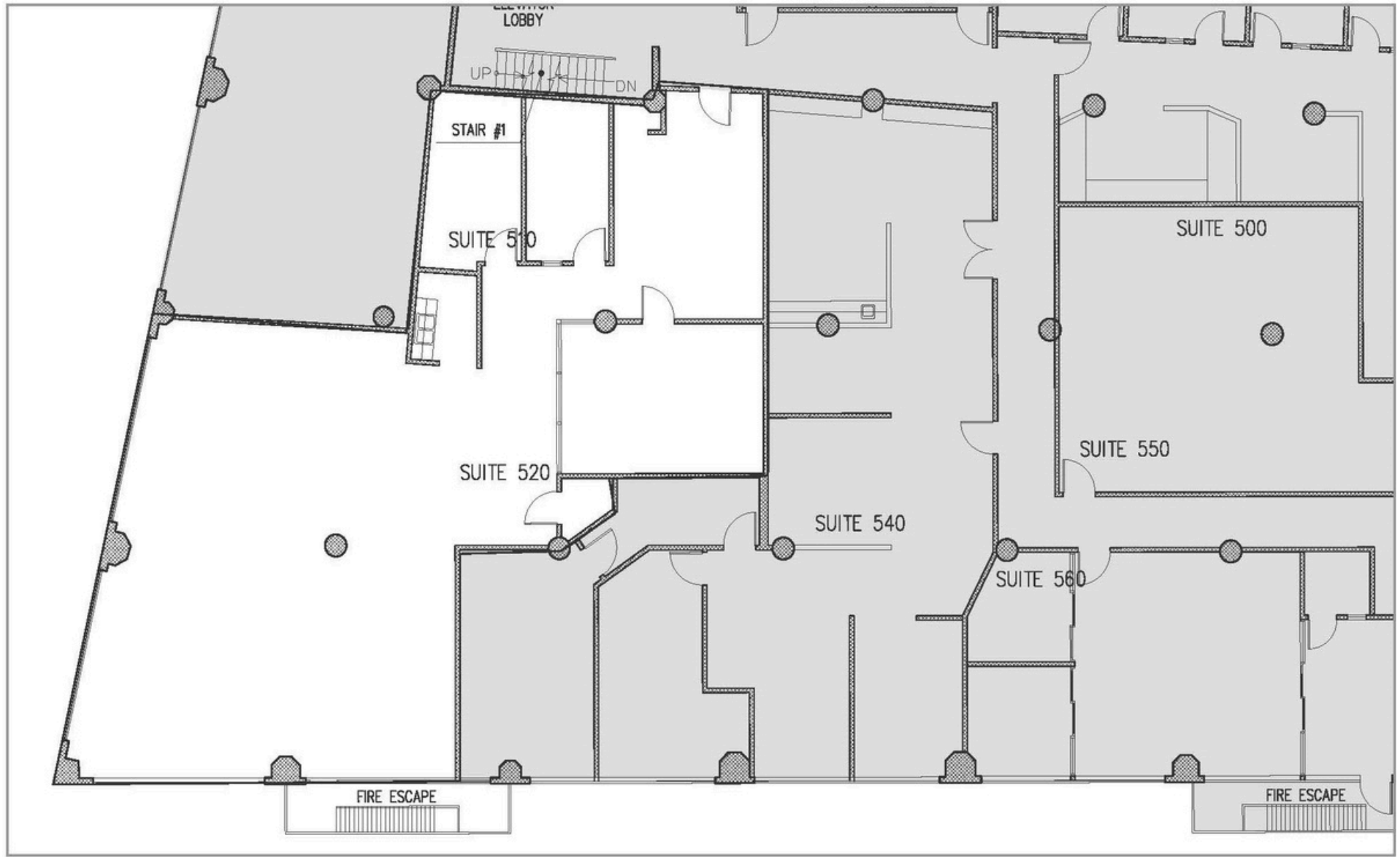


This information has been secured by Starboard CRE from sources believed to be reliable. It is not guaranteed and should be verified before closing any transaction.

STARBOARD CRE
LOCAL • INDEPENDENT • ENTREPRENEURIAL

SUITE 520 FLOORPLAN

For Lease



This information has been secured by Starboard CRE from sources believed to be reliable. It is not guaranteed and should be verified before closing any transaction.

SUITE 560 OVERVIEW

For Lease

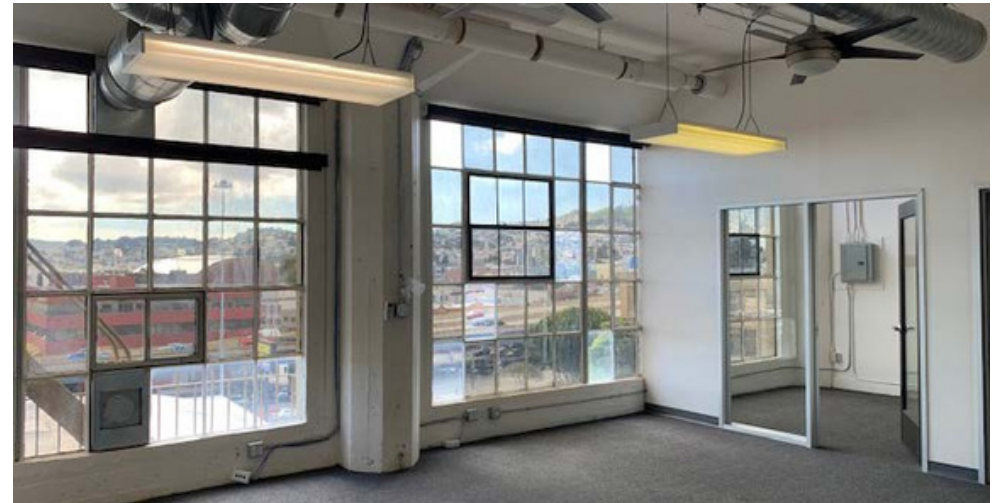
Suite: 560

Rentable SF: ± 1,150

Price: \$24 sf/YR

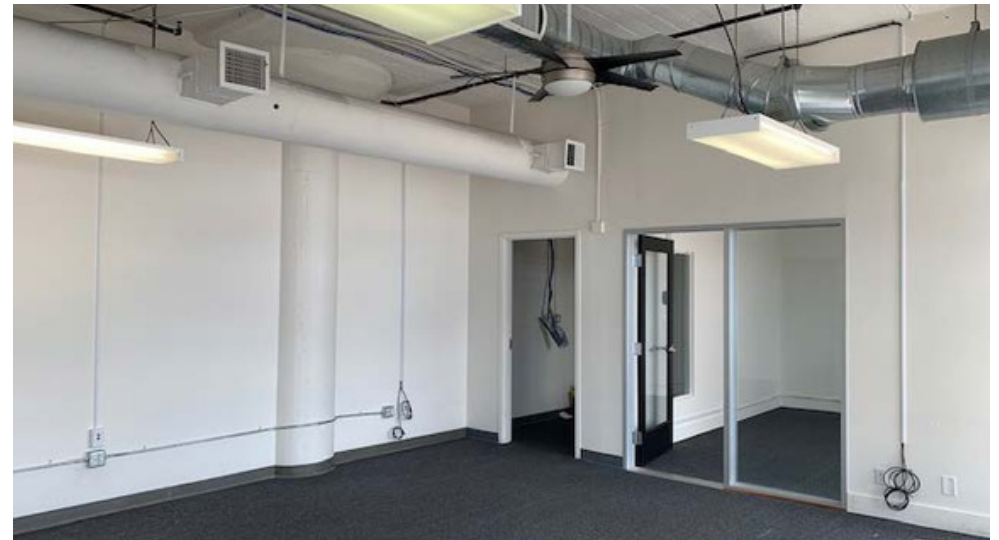
Lease Type: Industrial Gross

Term: 3 to 5 years



Highlights

- Three private offices
- Great southern views
- Open area
- Door accessible to large freight elevator

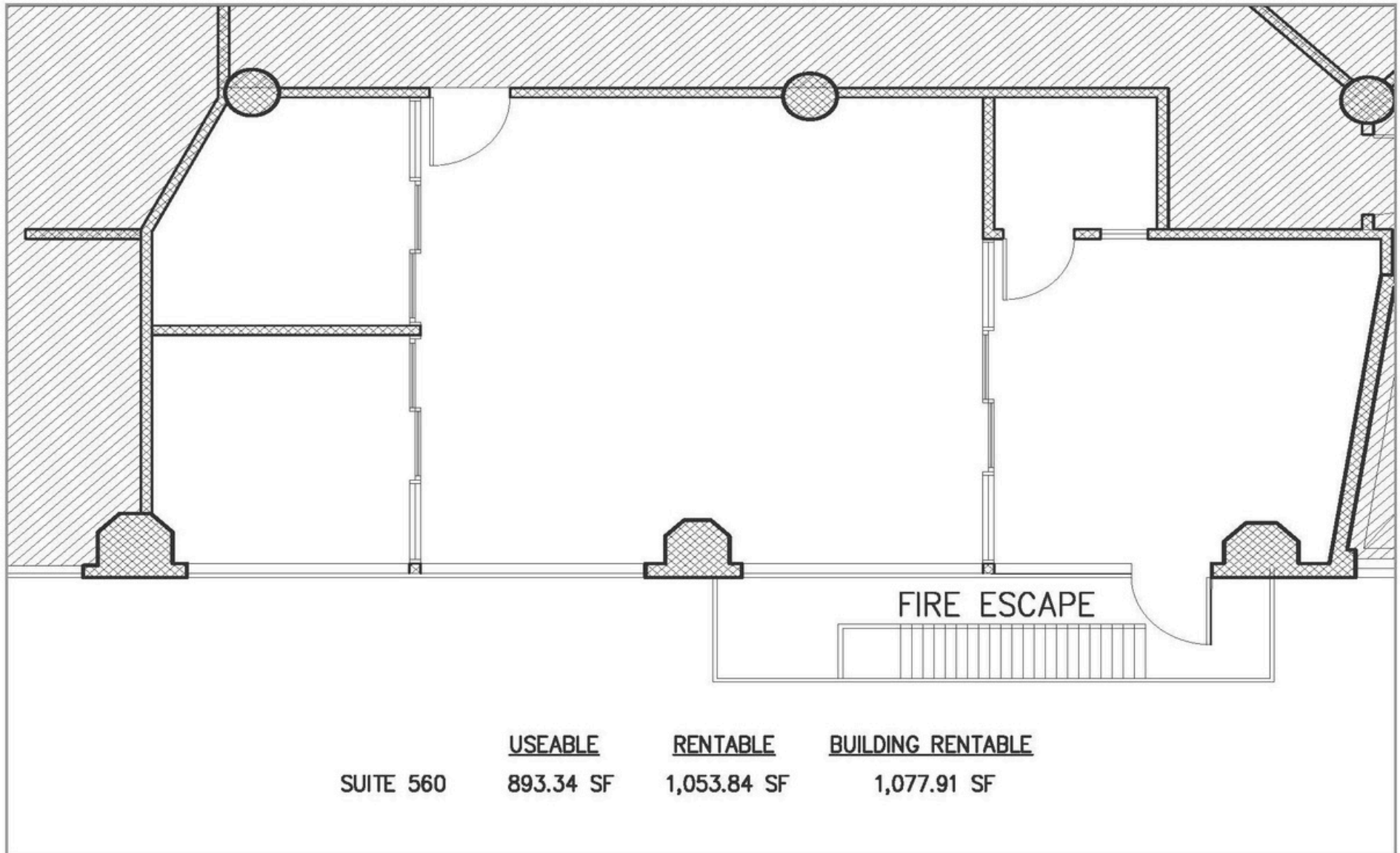


This information has been secured by Starboard CRE from sources believed to be reliable. It is not guaranteed and should be verified before closing any transaction.

STARBOARD CRE
LOCAL • INDEPENDENT • ENTREPRENEURIAL

SUITE 560 FLOORPLAN

For Lease



This information has been secured by Starboard CRE from sources believed to be reliable. It is not guaranteed and should be verified before closing any transaction.

NEIGHBORHOOD

For Lease



This information has been secured by Starboard CRE from sources believed to be reliable. It is not guaranteed and should be verified before closing any transaction.

STARBOARD CRE
LOCAL • INDEPENDENT • ENTREPRENEURIAL



Hans Hansson

President / Broker of Record
hans@starboardcre.com
CELL: 415.517.2589
DRE # 00872902

Call

View Profile



CRAIG HANSSON

Vice President
craig@starboardcre.com
CELL: 415-710-7768
DRE # 01841643

Call

View Profile



STARBOARD CRE
LOCAL • INDEPENDENT • ENTREPRENEURIAL

STARBOARDCRE.COM
OFC. PHONE 415.765.6900

49 POWELL STREET, SAN FRANCISCO, CA 94102



Unique Vision

We see what others miss

Local Market Leader

No one knows Northern
California like we do

Full-Service Firm

We do it all

Locally based, and technology-forward, our brokers are highly qualified experts backed by a full-service, in-house support team who understand the intricacies of San Francisco real estate. Starboard CRE brings decades of brokerage experience representing over 600 million square feet of space with an aggregate lease value of over 10 billion and investments sold over 3 billion.

CA DRE# 01103056

TCN
WORLDWIDE
REAL ESTATE SERVICES

AREA
ASSOCIATED REALTY OF THE AMERICAS