



1663

Mission Street

SAN FRANCISCO, CA 94103

Craig Hansson

craig@starboardcre.com

415.710.7768

Hans Hansson

hans@starboardcre.com

415.517.2589

STARBOARDCRE.COM | M. 415-710-7768 | E: CRAIG@STARBOARDCRE.COM

This information has been secured by Starboard CRE from sources believed to be reliable. It is not guaranteed and should be verified before closing any transaction. CA DRE 01103056



STARBOARD CRE
LOCAL • INDEPENDENT • ENTREPRENEURIAL

PROPERTY OVERVIEW

Property Name: 1663 Mission Street, San Francisco, CA

Lease Type: Industrial Gross

Term: 3 to 5 years

Description

1663 Mission pins right in the center of three vibrant areas: SoMa, Mission Dolores, and Lower Haight/Hayes Valley, with immediate access to the 101. Within walking distance, you'll find gastropubs, beer gardens, breweries, diverse eateries, and major retailers like Target.

A clean and brightly lit parking facility sits conveniently across the street from 1663 Mission, providing direct access to its multiple floors—all featuring renovated common areas designed to accommodate a variety of creative-flex environments.

Recent renovations include an updated lobby and elevators, enhancing the overall experience for tenants and visitors alike. The building offers a unique opportunity to lease the spaces you need now, with options for growth within each space.

HIGHLIGHTS

- A security guard on site
- High exposed ceilings with an industrial feel
- Variety of private offices and open areas with lots of natural light
- Excellent window line on both sides
- Immediate access and convenience to all forms of transportation and amenities
- Brightly lit parking facility sits conveniently across the street



SUITE 460 OVERVIEW

Suite: 460

Rentable SF: 3,459 SF

Price: \$24 sf/YR

Lease Type: Industrial Gross

Term: 3 to 5 years

Highlights

- One conference room
- Two large offices
- Seven regular size offices
- Storage room
- Rest open plan
- Excellent Views



SUITE 460 - FLOORPLAN



SUITE 504 OVERVIEW

Suite: 504

Rentable SF: ± 1,280

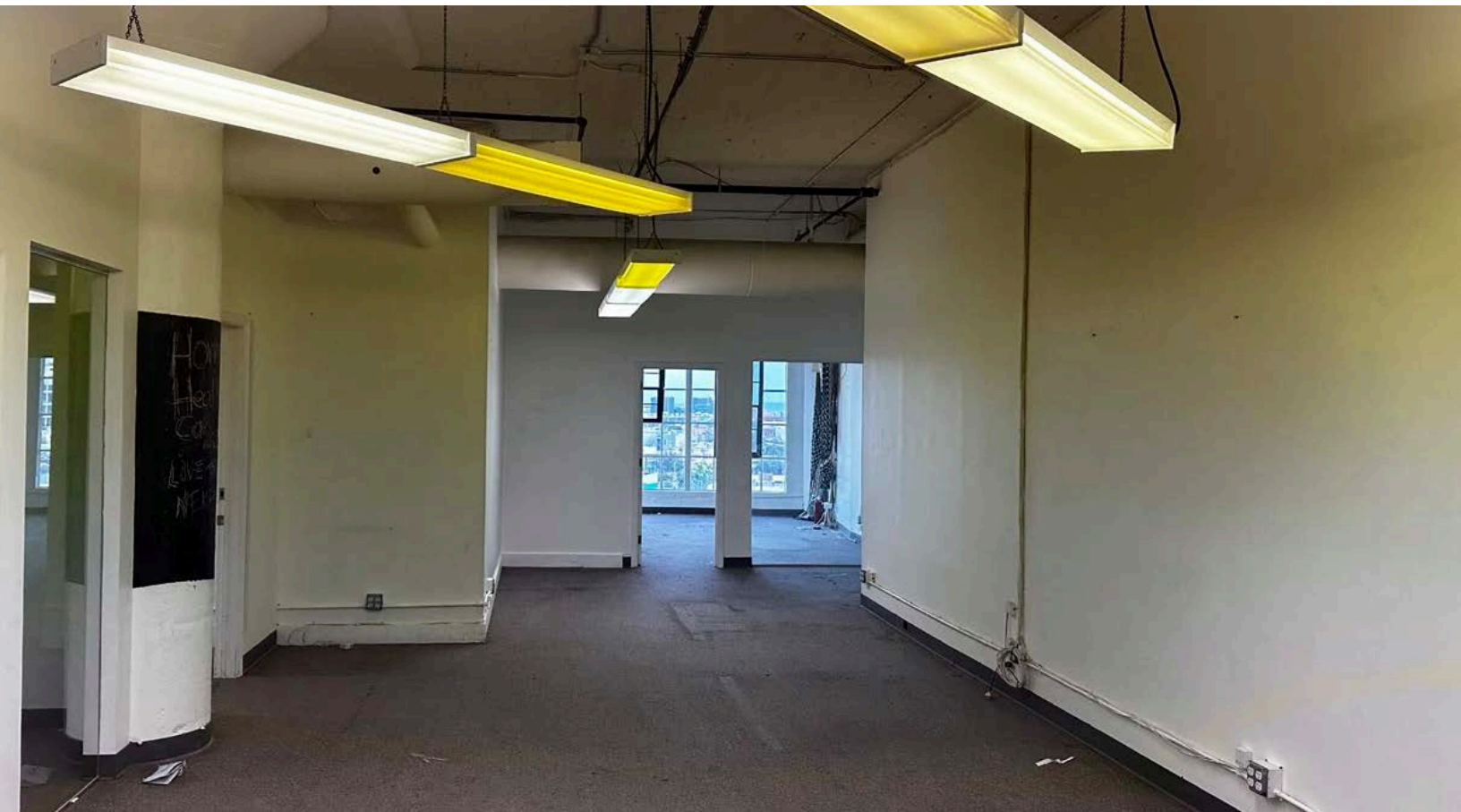
Price: \$24 sf/YR

Lease Type: Industrial Gross

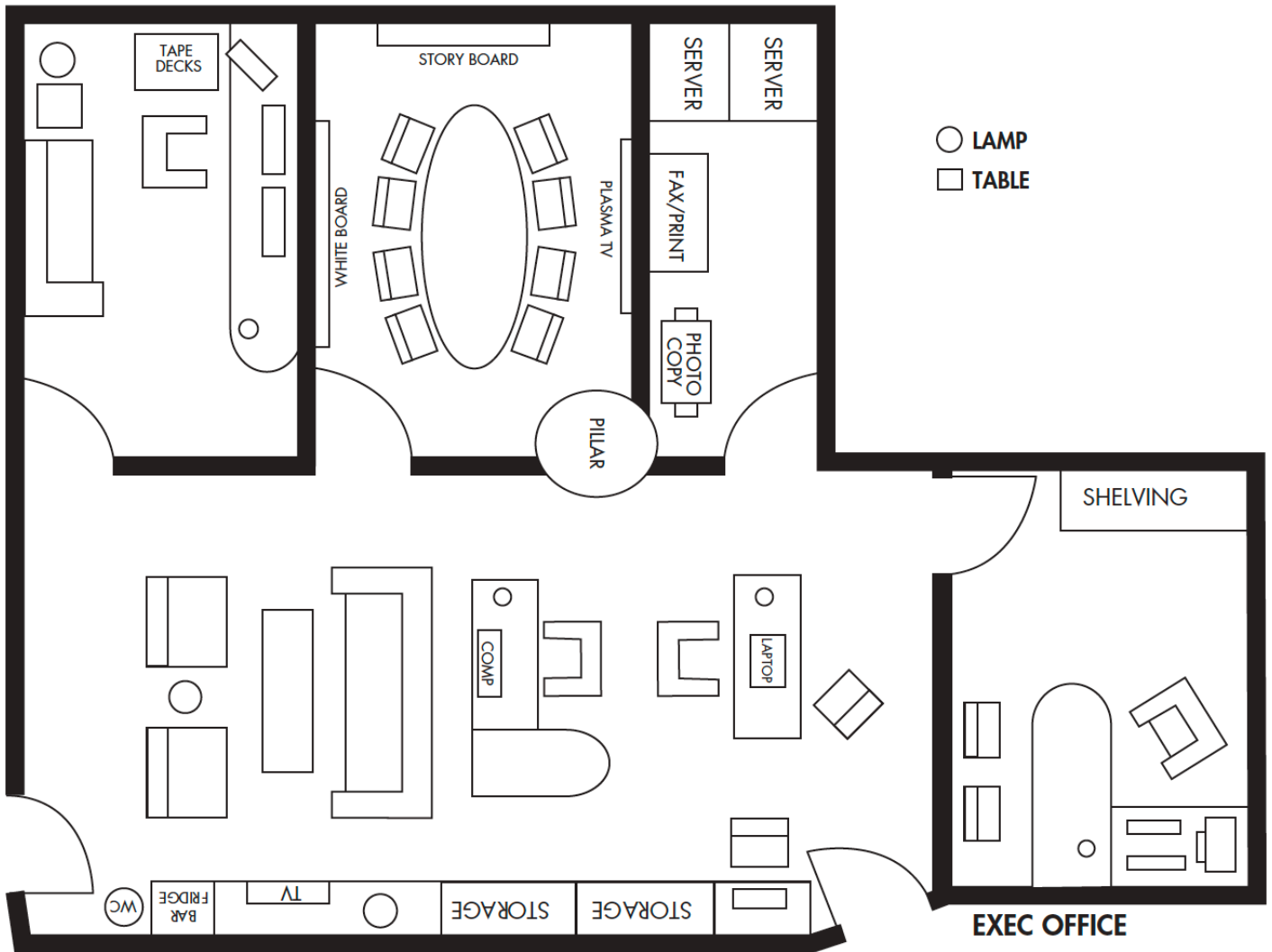
Term: 3 to 5 years

Highlights

- Two large offices
- One conference room
- Storage room
- Rest open plan
- Excellent Views



SUITE 504 - FLOORPLAN



SUITE 520 OVERVIEW

Suite: 520

Rentable SF: ± 3,000

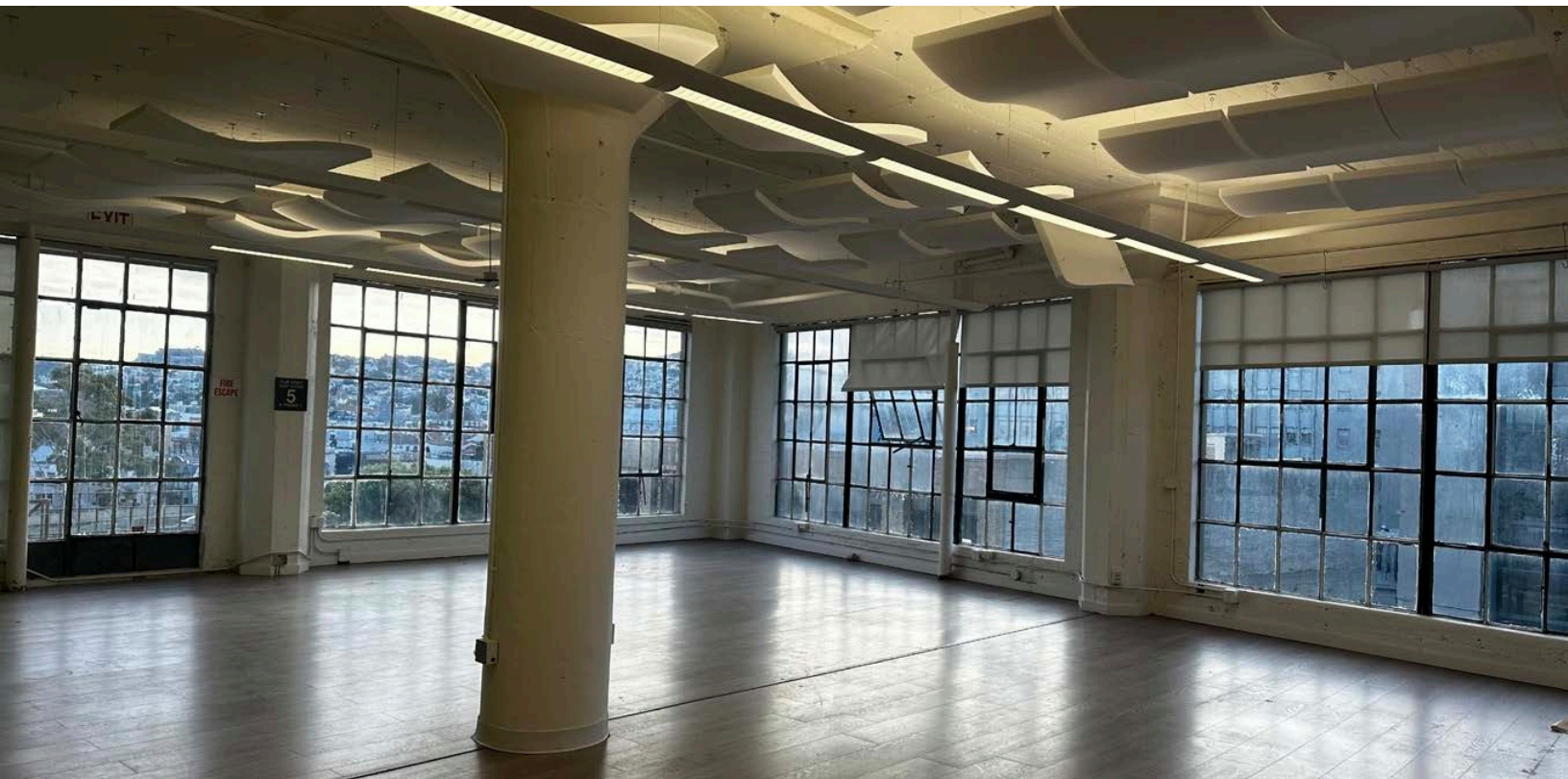
Price: \$24 sf/YR

Lease Type: Industrial Gross

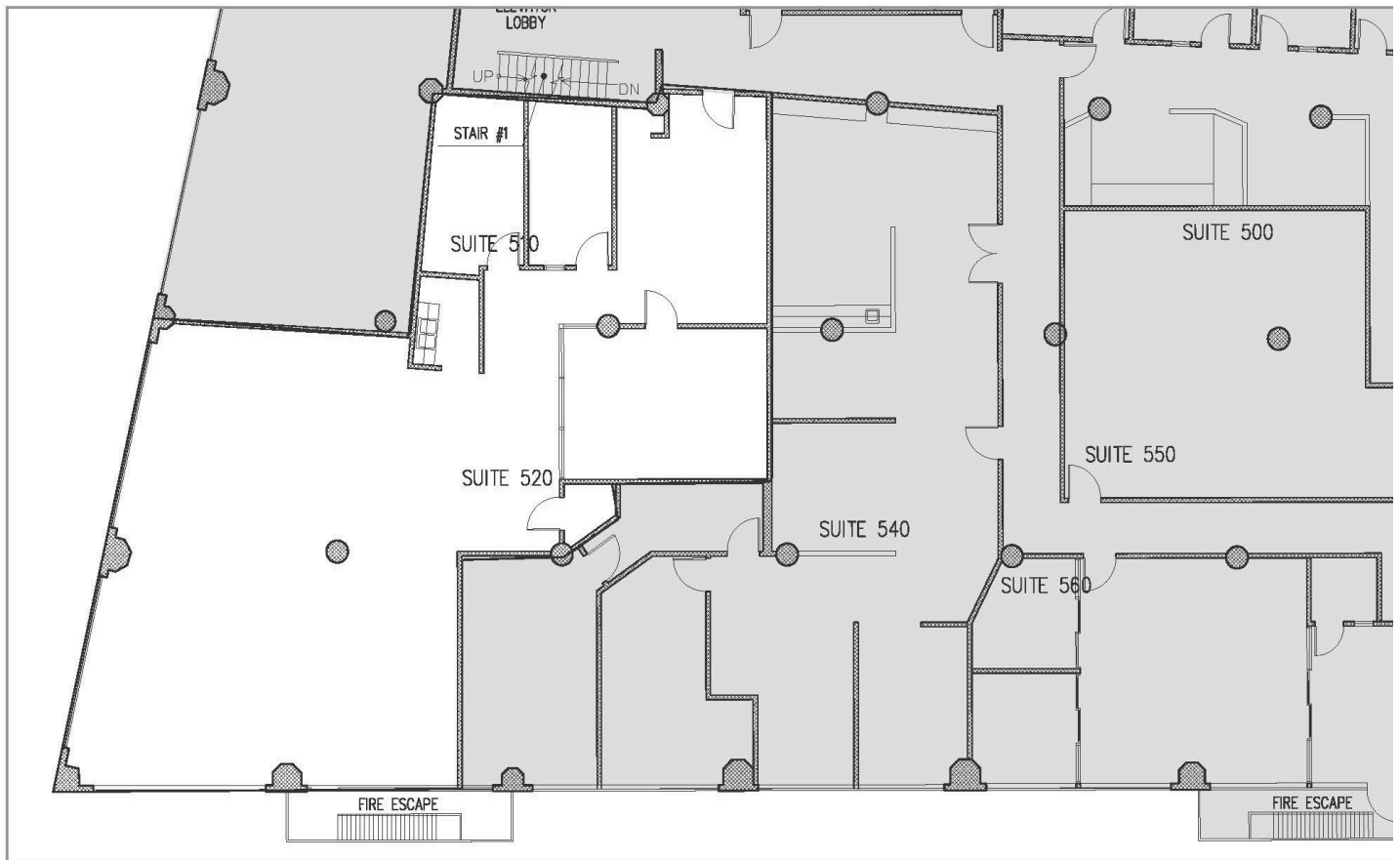
Term: 3 to 5 years

Highlights

- Large reception area
- Glass conference room
- Two interior offices with glass
- Kitchen
- Large open area
- Excellent window line
- Suites 520 and 510 can be combined



SUITE 520 - FLOORPLAN



SUITE 560 OVERVIEW

Suite: 560

Rentable SF: ± 1,150

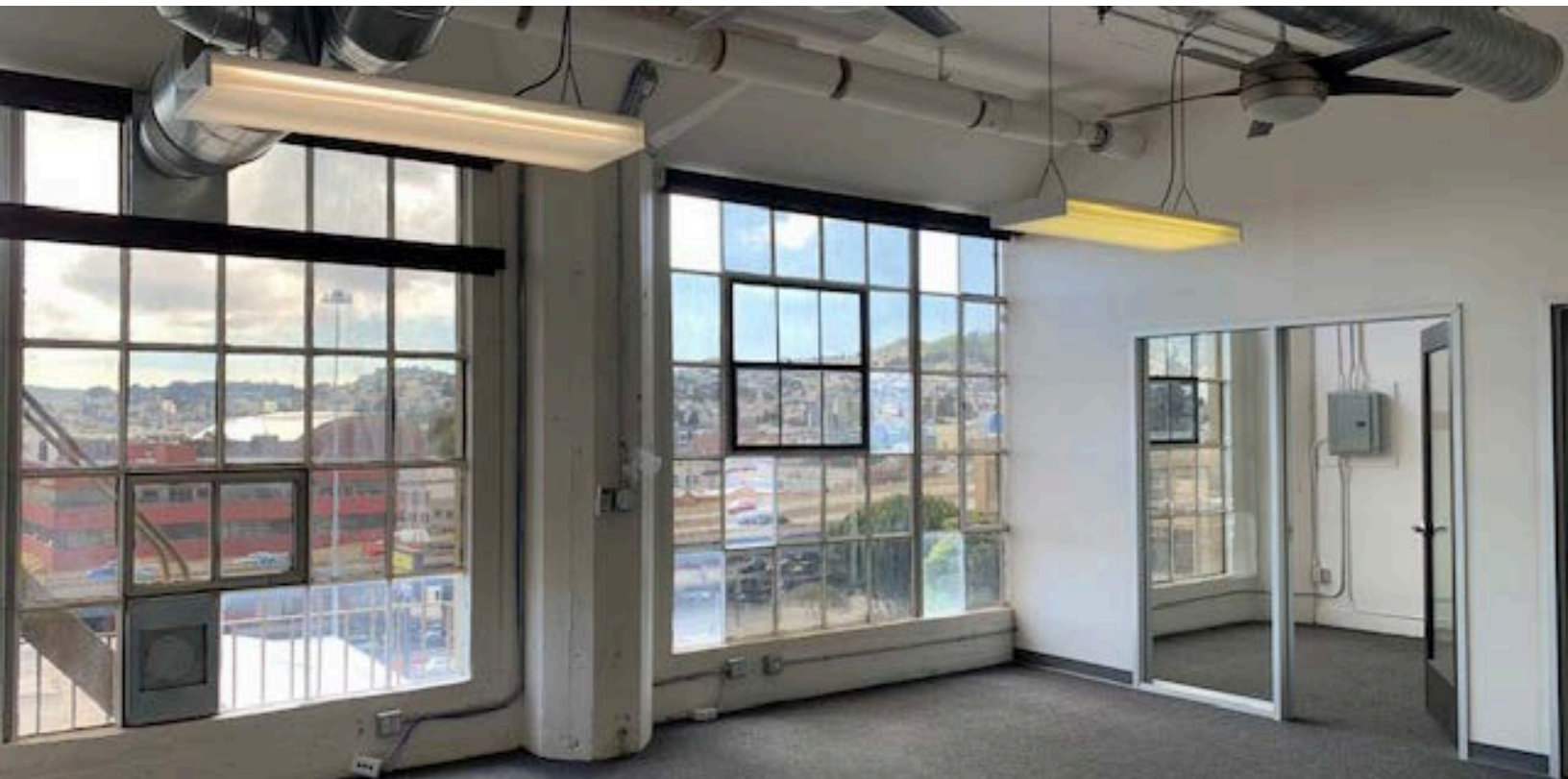
Price: \$24 sf/YR

Lease Type: Industrial Gross

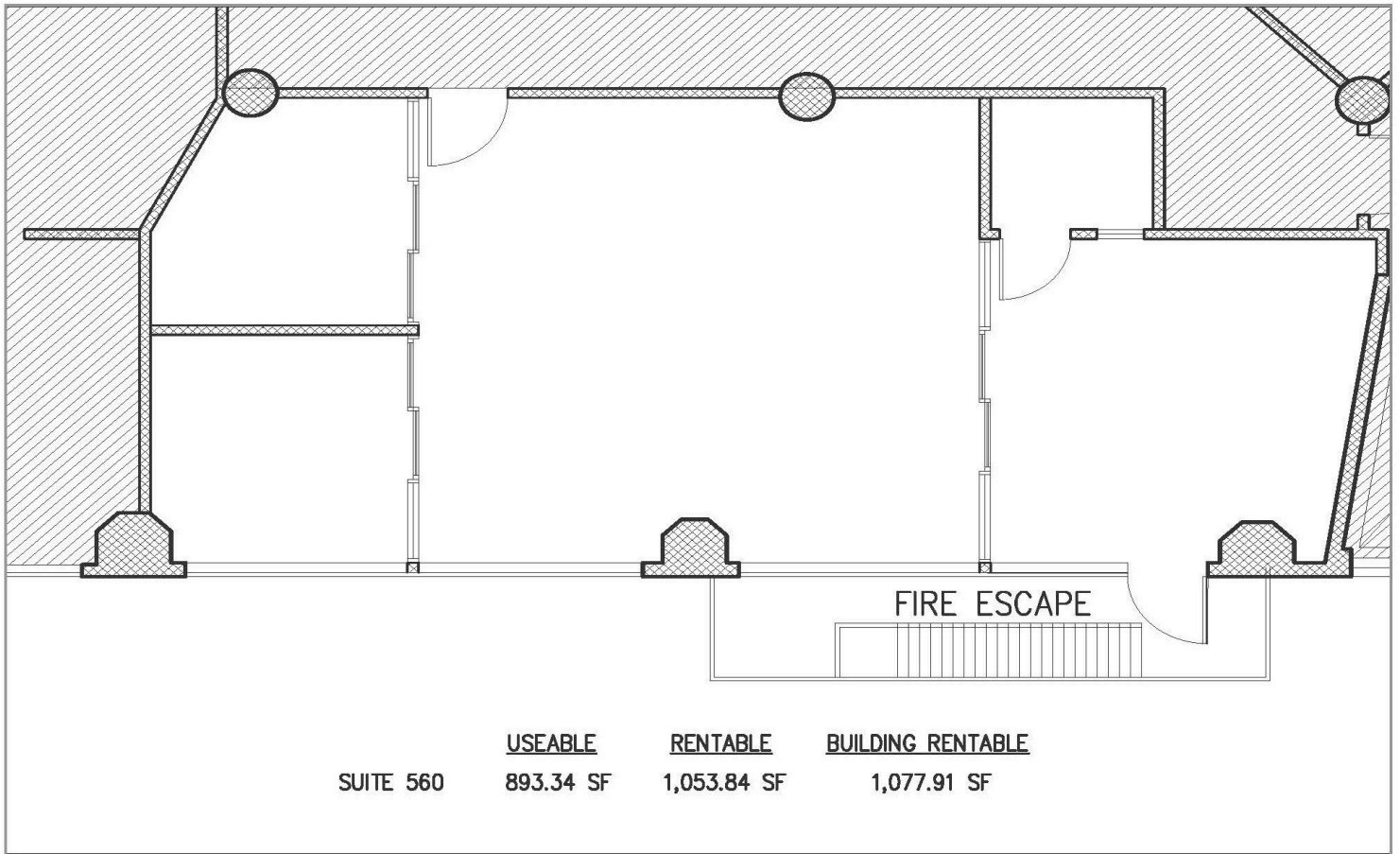
Term: 3 to 5 years

Highlights

- Three private offices
- Great southern views
- Open area
- Door accessible to large freight
- elevator



SUITE 560 - FLOORPLAN



NEIGHBORHOOD



STARBOARDCRE.COM | M. 415-710-7768 | E: CRAIG@STARBOARDCRE.COM
This information has been secured by Starboard CRE from sources believed to be reliable. It is not guaranteed and should be verified before closing any transaction. CA DRE 01103056



STARBOARD CRE
LOCAL • INDEPENDENT • ENTREPRENEURIAL

AGENTS



Craig Hansson

Vice President

craig@starboardcre.com

CELL: 415.710.7768

CA DRE #01841643

Call

View Profile



Hans Hansson

President / Broker of Record

hans@starboardcre.com

CELL: 650.464.8062

OFFICE: 415.517.2589

CA DRE # 00872902

Call

View Profile





STARBOARD CRE
LOCAL • INDEPENDENT • ENTREPRENEURIAL

STARBOARDCRE.COM
49 POWELL STREET, SAN FRANCISCO, CA 94102



Unique Vision

We see what others miss

Local Market Leader

No one knows Northern California like we do

Full-Service Firm

We do it all

Locally based, and technology-forward, our brokers are highly qualified experts backed by a full-service, in-house support team who understand the intricacies of San Francisco real estate. Starboard CRE brings decades of brokerage experience representing over 600 million square feet of space with an aggregate lease value of over 10 billion and investments sold over 3 billion.



CA DRE# 01103056