



FOR LEASE

Small offices in boutique building that provide full service amenities at competitive market rates

FOR LEASE | MULTIPLE SPACES | FLEXIBLE TERMS

1230 MARKET STREET

San Francisco, CA 94102



STARBOARD CRE

LOCAL · INDEPENDENT · ENTREPRENEURIAL

1230 MARKET STREET

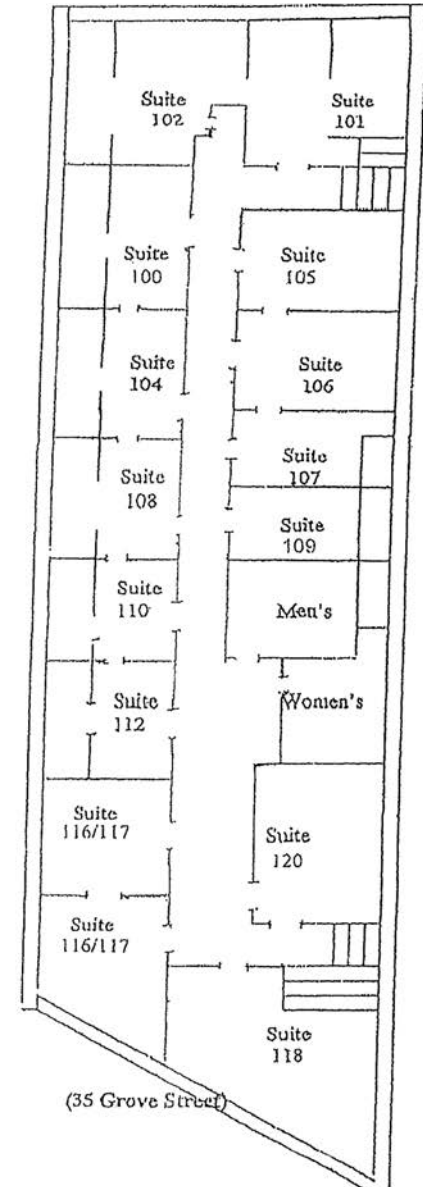
1230 Market is a boutique office building located in heart of Mid Market. Within walking distance to Civic Center BART, City Hall, several cafes, restaurants and the new Whole Foods Market that will be opening later this year.

This building is comprised of smaller offices that provide full service amenities at competitive market rates.

HIGHLIGHTS

- ✓ ± 150 to 600 SF
- ✓ Great natural light
- ✓ Full HVAC
- ✓ Operable windows
- ✓ Prime Mid-Market location
- ✓ Light foot traffic
- ✓ Flexible lease terms

RENTABLE SF	SUITE NO.
± 350	Suite 104
± 350	Suite 108
± 150	Suite 109
± 350	Suite 110
± 600	Suite 116/117

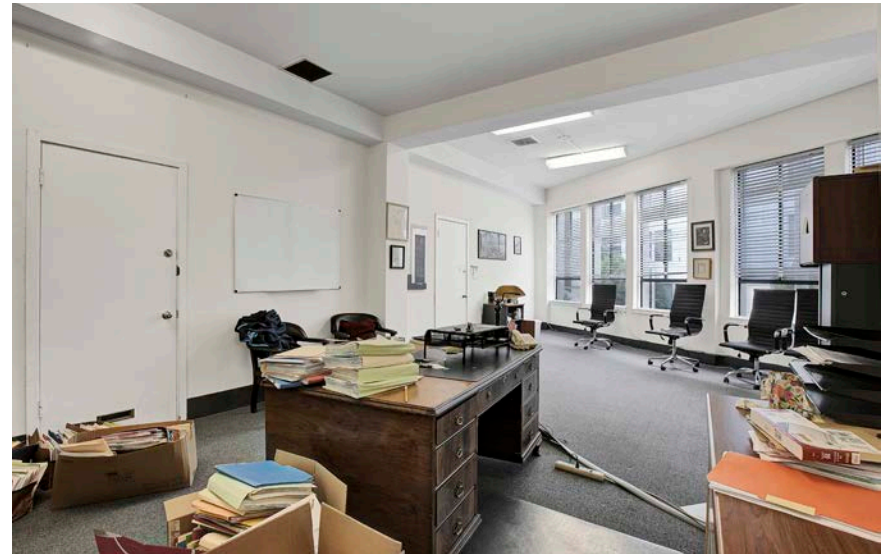
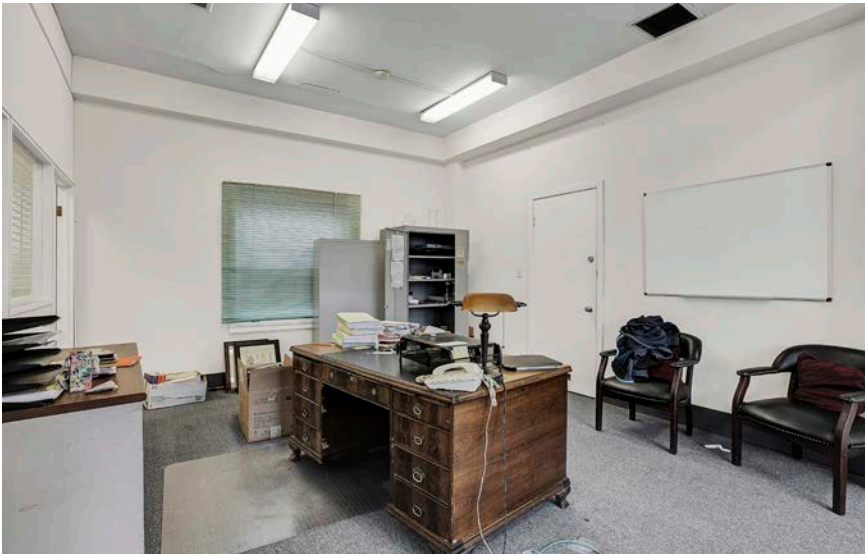




Above: Suite 108

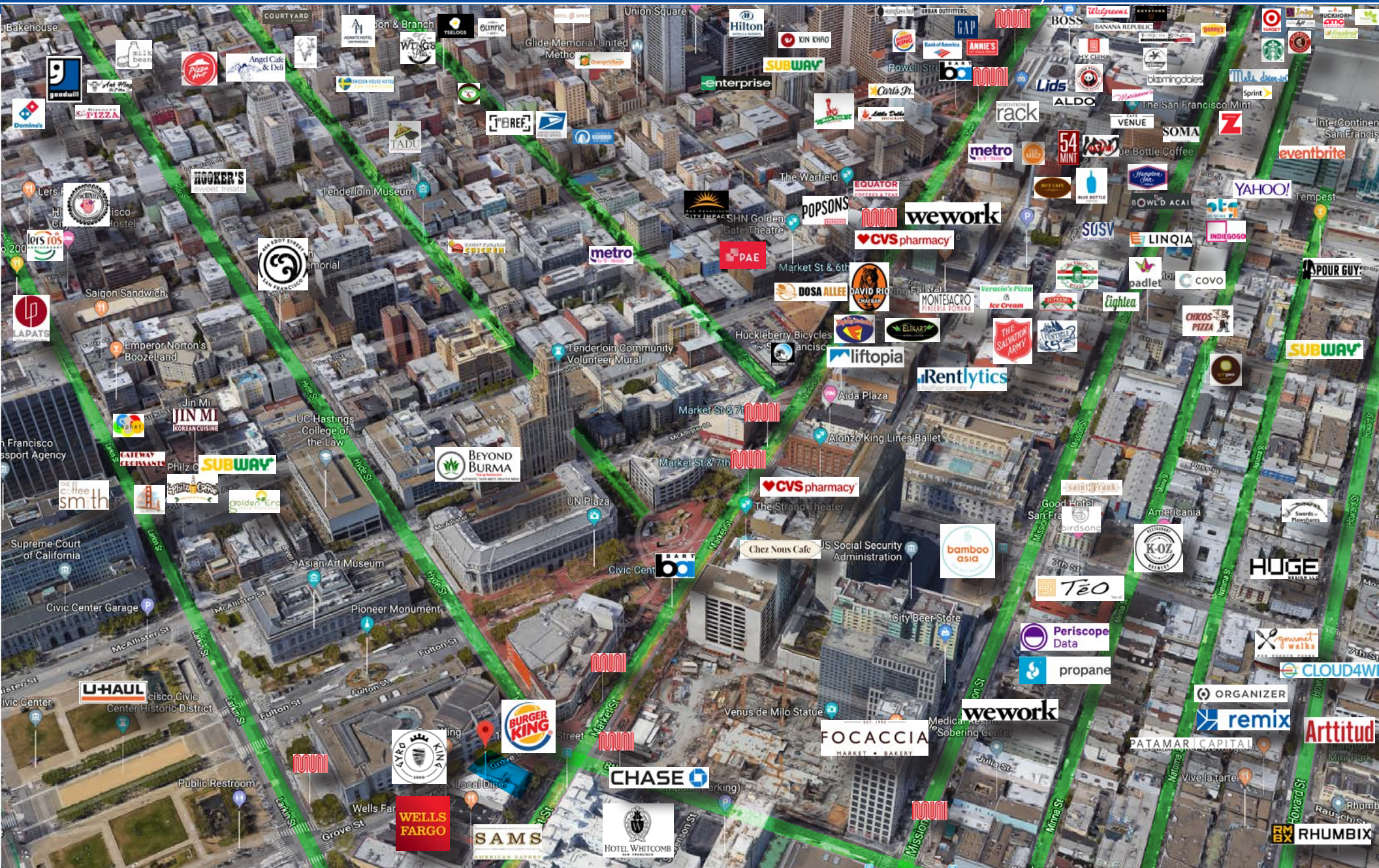
Right Top and Bottom: Suite 109

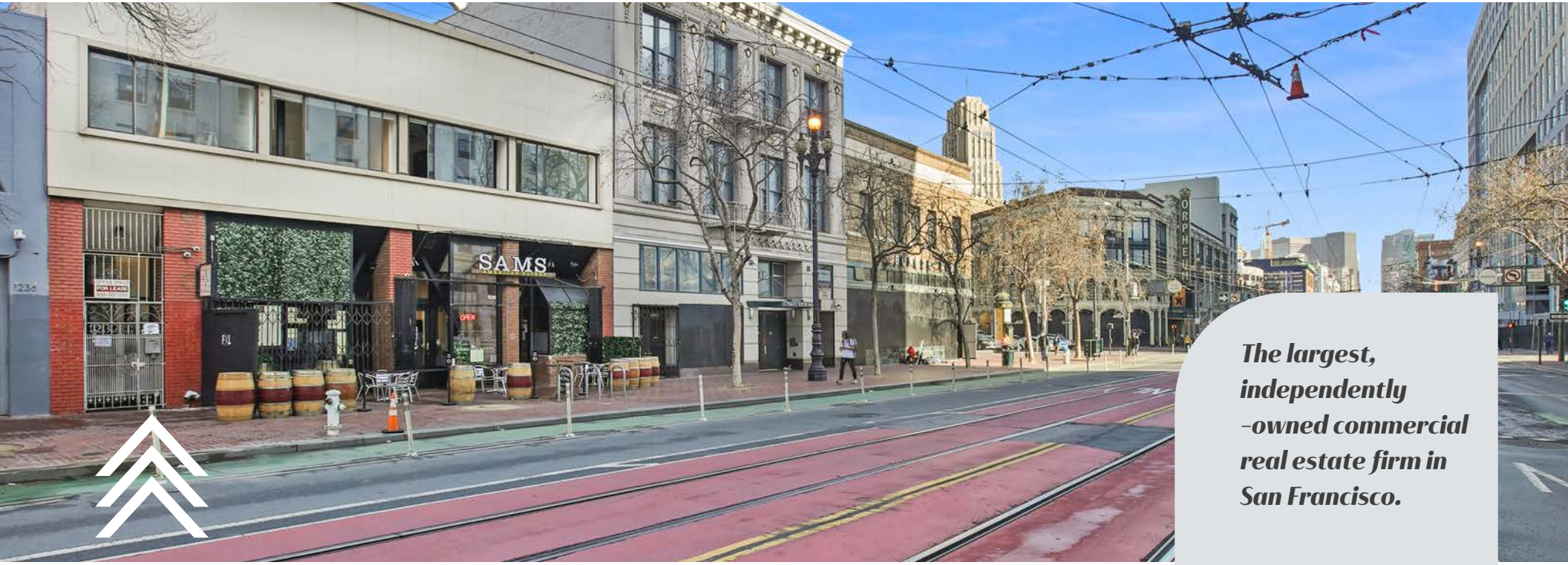




Major Points of Interest

FOR LEASE





*The largest,
independently
-owned commercial
real estate firm in
San Francisco.*

Unique Vision

We see what others miss

Local Market Leader

No one knows Northern
California like we do

Full Service Firm

We do it all

MARK MEIER
Associate
CALL 415-299-7042
CA BRE# 02047169

Since 1991, Starboard CRE has organically cultivated substantial relationships with investors, tenants, developers, architects, and accountants throughout the San Francisco-Bay Area. Locally based, Starboard agents are positioned to distinguish the San Francisco real estate market like no other, knowing the ins and outs of the city and having access to networks of more than 2,000 buildings and over 100 million square feet of space. Through these networks and unique inside knowledge, Starboard CRE makes it achievable to assist buyers quickly in finding their ideal space in one of the most unique real estate markets in the world.

